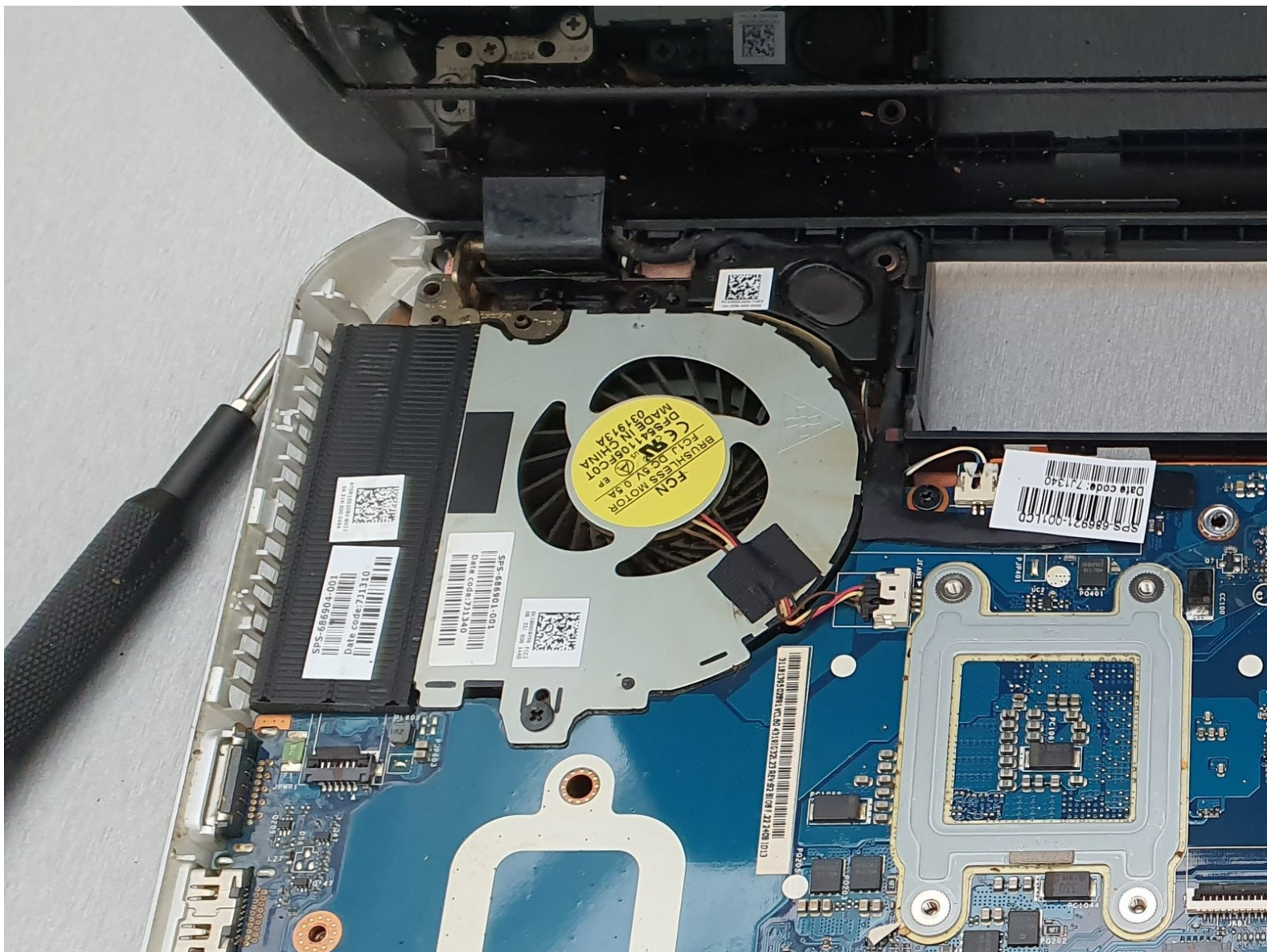




HP Envy m6-1225dx Cooling Fan Replacement

This guide will go step-by-step on how to remove a clogged or faulty cooling fan in the HP Envy m6-1225dx laptop.

Written By: Donghyeok Roh



INTRODUCTION

CPU Cooling Fan Part Number

686901-001 DC28000BFS0

The CPU Cooling Fan allows for continuous cooling of the CPU also known as the brain of a computer inside a laptop to not overheat and burn the user.

This CPU Cooling Fan can be prone to issues of overheating due to clogging or a faulty fan. If you believe the fan is not faulty and only needs cleaning, you can remove the fan and cleanse it with a computer duster.

This guide will go step-by-step on how to remove a clogged or faulty cooling fan.

Check out the [Troubleshooting](#) guide for other issues that could be related to the fan.

CAUTION: Placing the computer on a cloth surface such as your lap, a bed, or a couch cushion, can restrict or completely block the airflow. Prolonged air restriction causes overheating and potential damage.

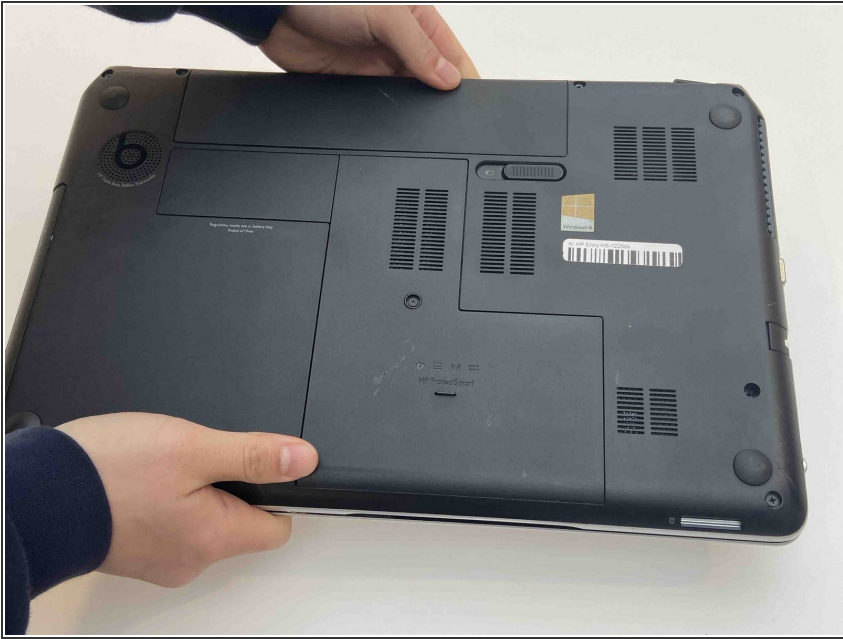
CAUTION: DO NOT continue to use the computer when a fan is not working correctly. Overtime, exposure to consistently high temperatures can damage other important internal components.



TOOLS:

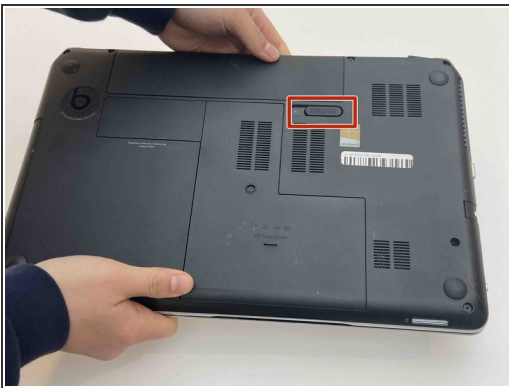
- [Phillips #1 Screwdriver](#) (1)
 - [Tweezers](#) (1)
 - [Spudger](#) (1)
-

Step 1 — Optical Drive



- Flip the laptop over onto its top with the back facing you

Step 2



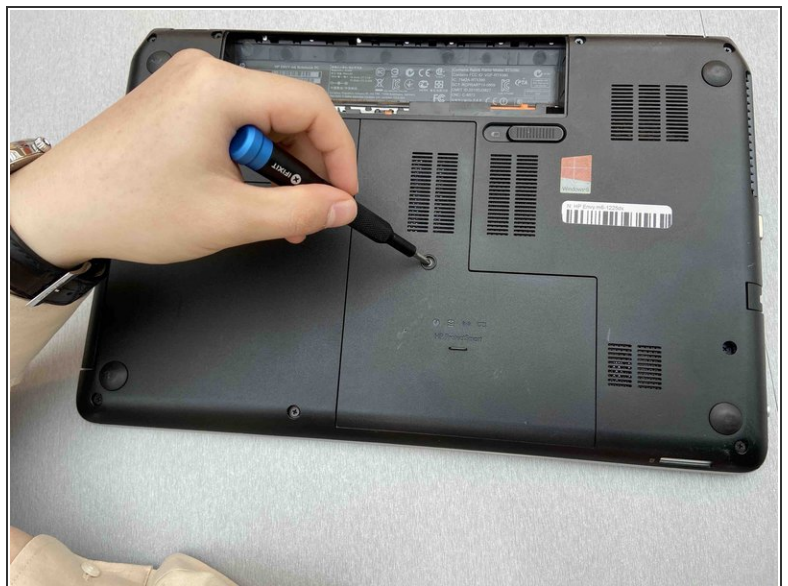
- Pull the slide release tab to the left to free the battery.
- Once the slide release is all the way over, a red icon should be visible.
- ⓘ As you pull the tab, the bottom edge of the battery should start to come up.

Step 3



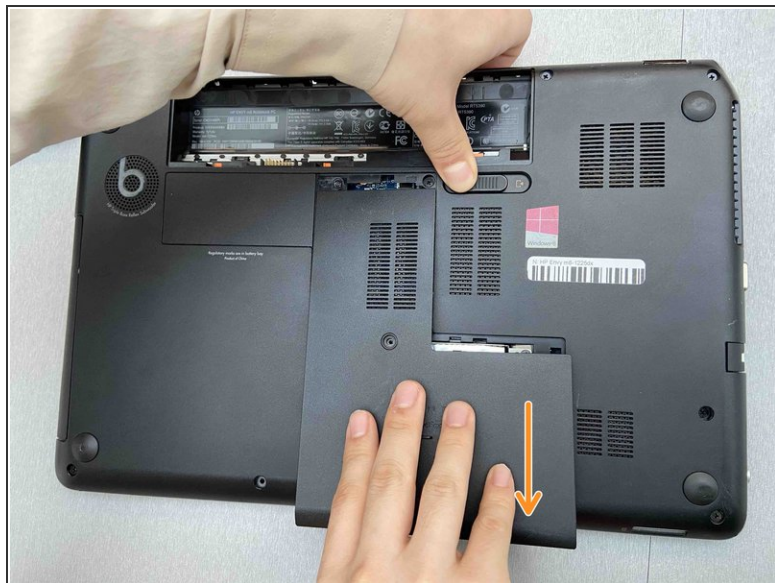
- Remove the battery

Step 4



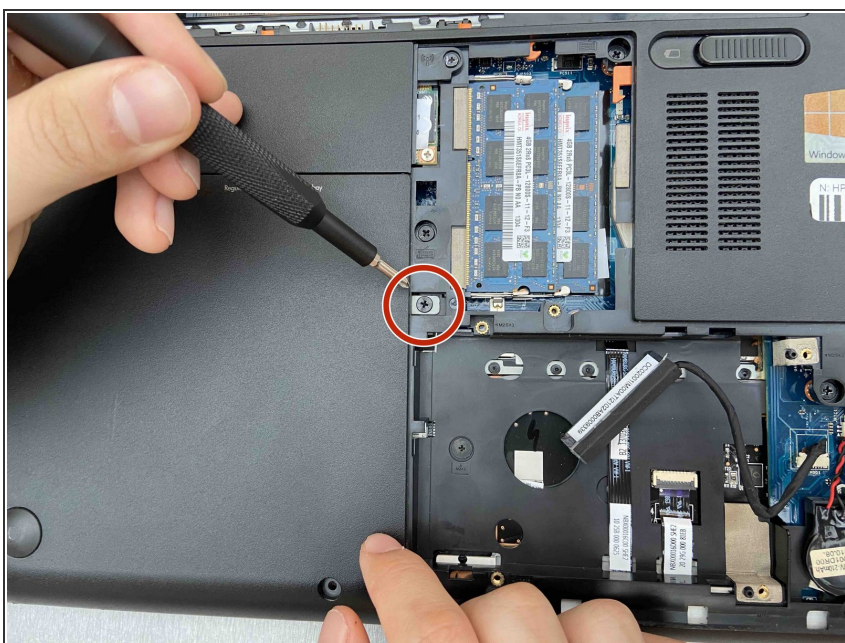
- Remove the center screw using a Phillips #1 screwdriver.

Step 5



- Move the battery slide release latch to the side while pulling the service cover forward.
- Pull the service cover straight up and out to remove.

Step 6



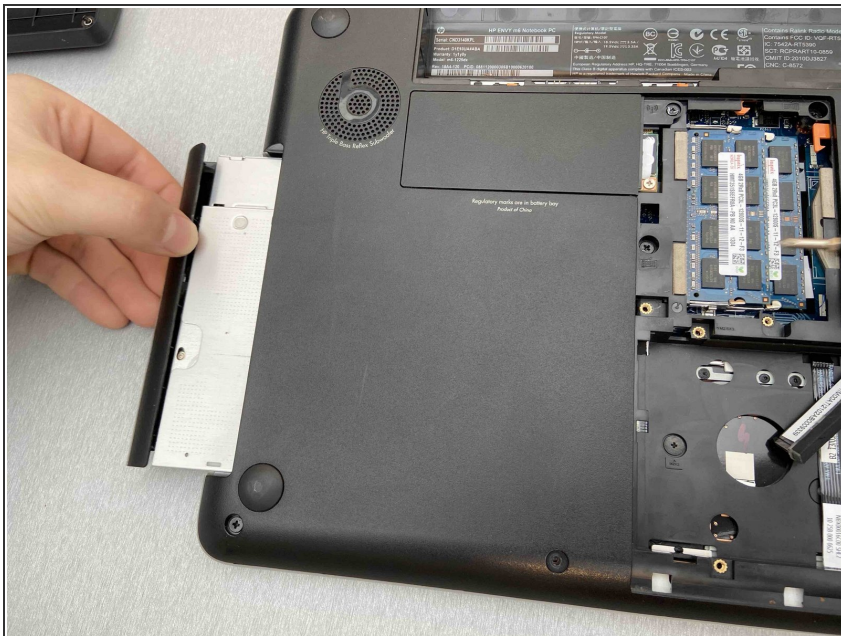
- Use a Phillips #1 screwdriver to remove the single screw holding the optical drive

Step 7



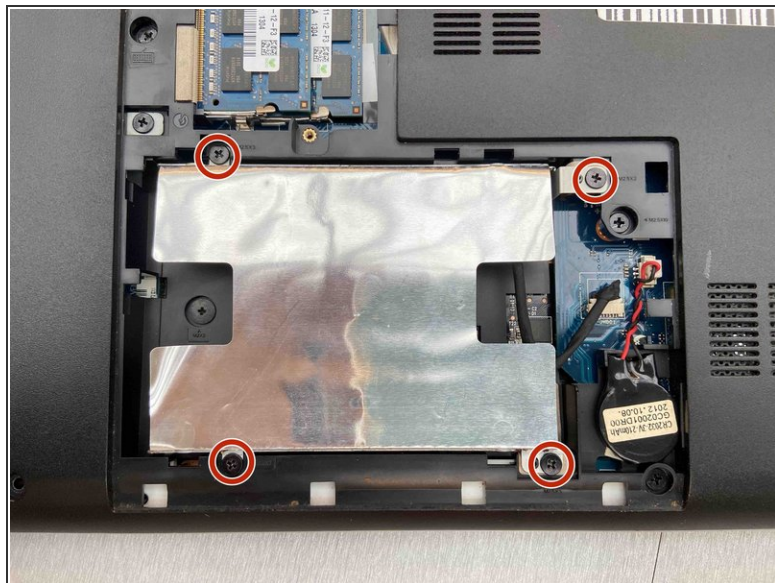
- Use a spudger to apply pressure to the tab, while simultaneously pulling out the optical drive.
- ⓘ While the images show the tab being pushed out with a screwdriver, we recommend using an ESD-safe instrument instead!

Step 8



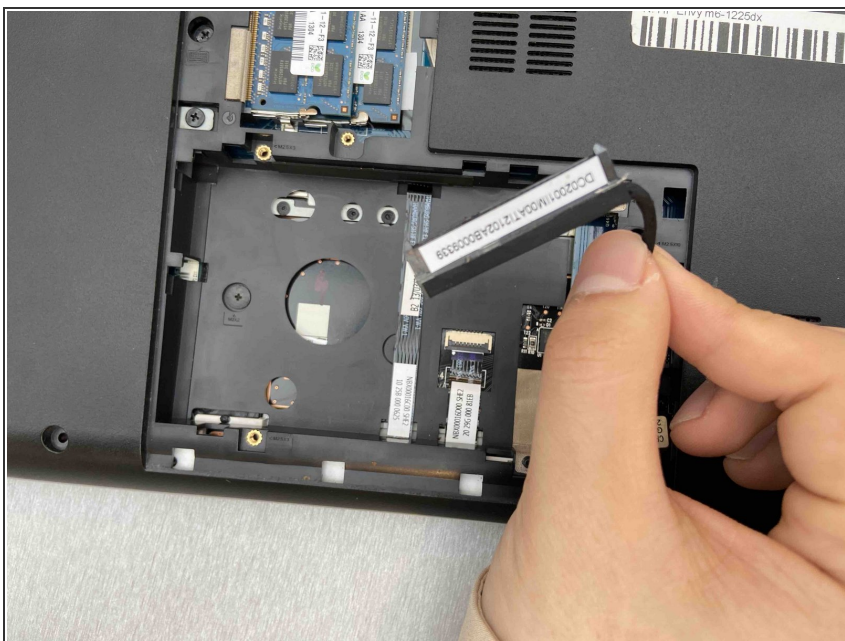
- Pull the optical drive out of the base of the laptop.

Step 9 — Cooling Fan



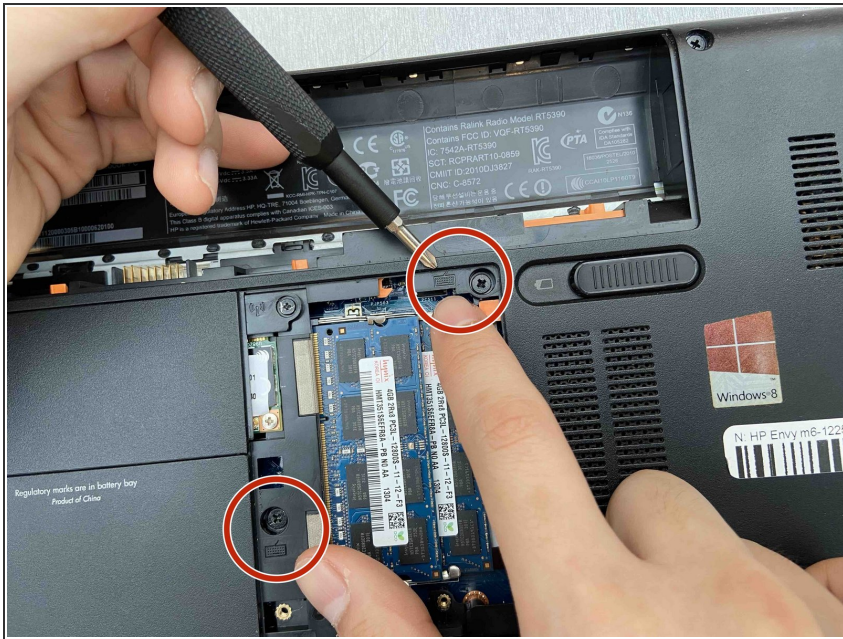
- Remove the four Phillips #1 screws from the hard drive bracket.

Step 10



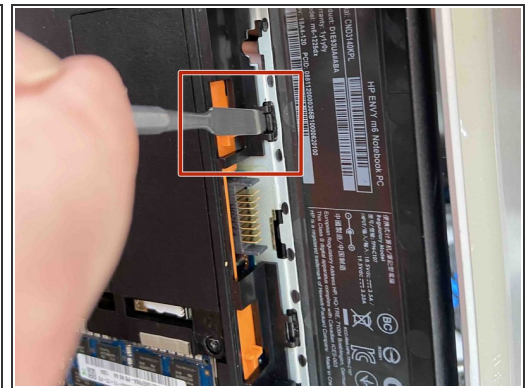
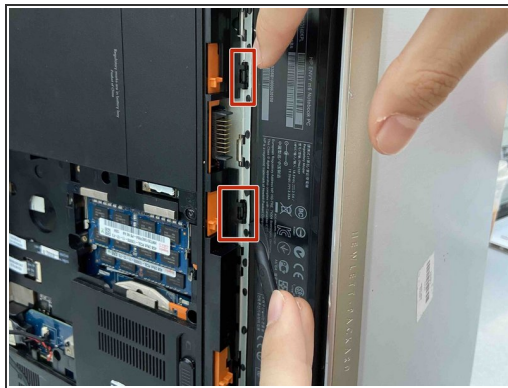
- Disconnect the cable from the side of the hard drive and move to the side.
- Remove the hard drive.
- ⓘ Our laptop did not have a hard drive when we disassembled it

Step 11



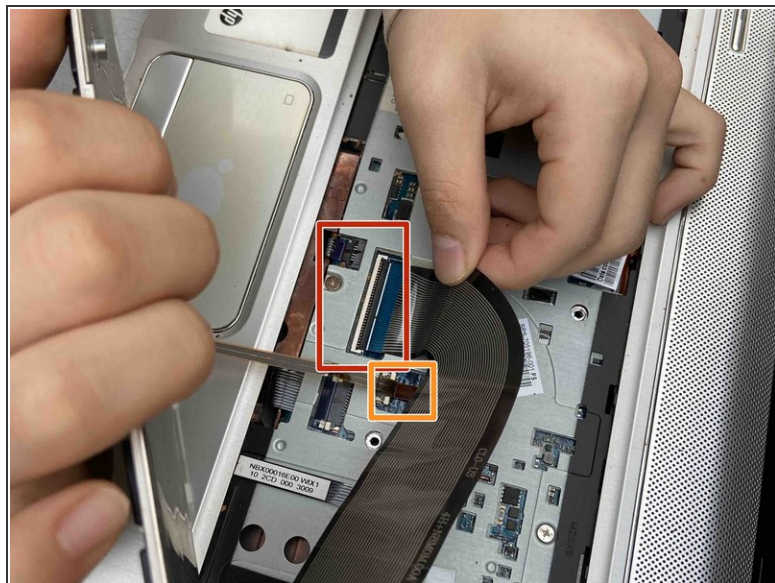
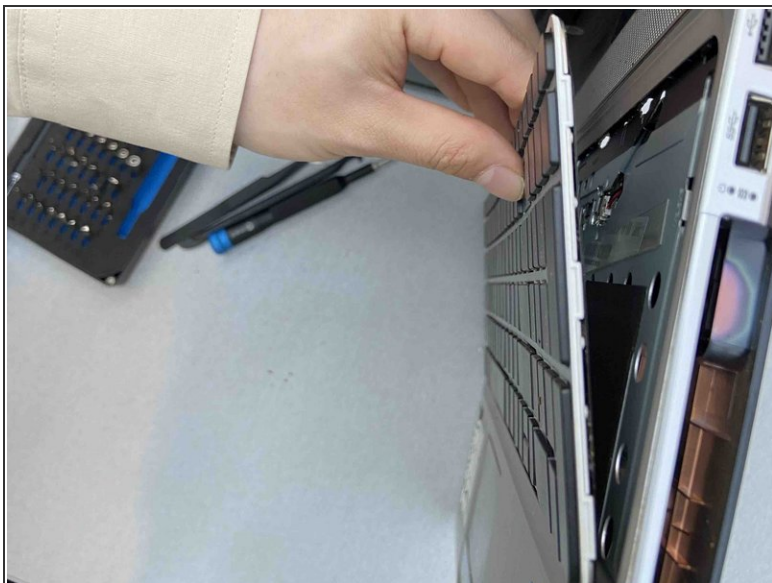
- Remove the two Phillips #1 screws that secure the keyboard to the laptop.


Step 12



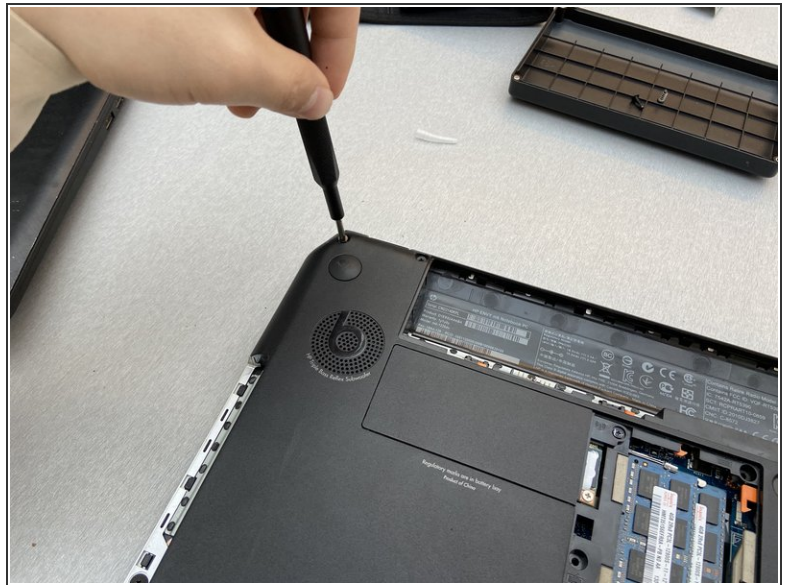
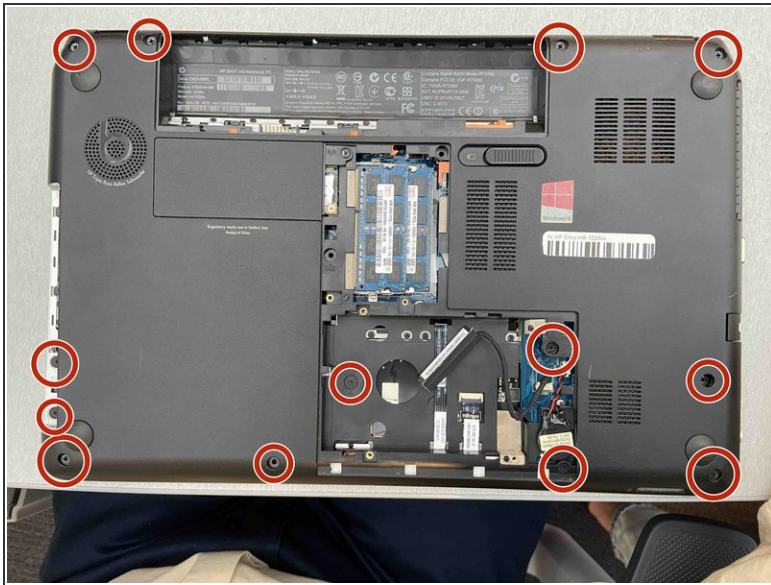
- Make the device stand onto its left side with the device open.
- Turn the laptop and look into the empty battery slot for two release holes.
- Insert a metal spudger into the release holes and apply pressure to the back of the keyboard until it comes loose of the laptop.

Step 13



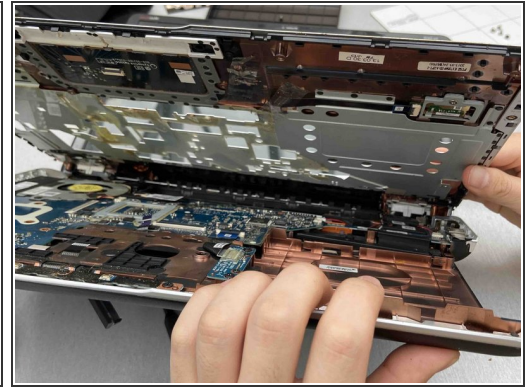
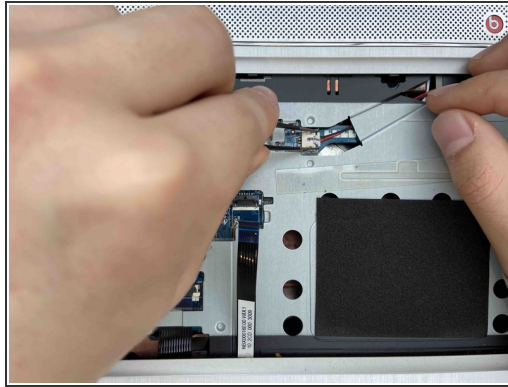
- Gently lift the keyboard away from the laptop.
 - Lift up the cable holder and remove the cable connection from the base of the laptop.
 - Lift up the locking tab of the ZIF connector and remove the keyboard backlight cable.
-  The keyboard backlight cable is only present on select models.

Step 14



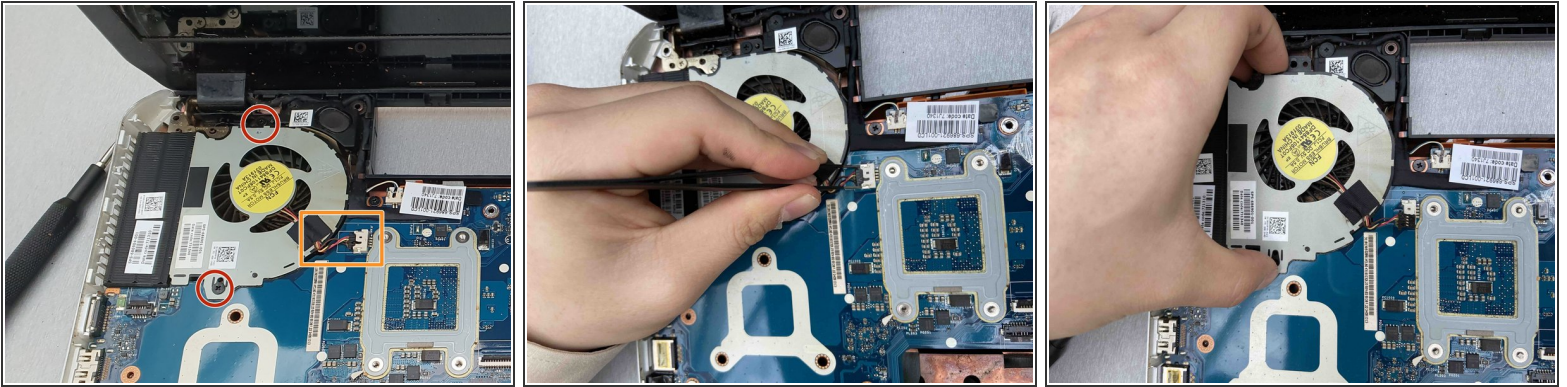
- Remove the 13 screws on the bottom of the laptop that secure the top cover using a Phillips #1 screwdriver.

Step 15



- Disconnect Power button board cable using a pair tweezers.
 - Disconnect Touch Pad button board cable using a pair tweezers.
 - Disconnect Fingerprint reader board cable using a pair tweezers.
 - Disconnect Right speaker cable using a pair tweezers.
 - Remove the 4 screws using a Phillips #1 screwdriver.
 - Apply force to the base of the cover to pop it off from the laptop base.
- ⚠ Be sure the cable for the right speaker doesn't get caught on the cover as it is removed or the speaker could be damaged.

Step 16



- Remove the two screws holding the cooling fan down with a Phillips #1 screwdriver.
- Disconnect the cooling fan cable using a pair tweezers.
- Gently lift the cooling fan.

To reassemble your device, follow these instructions in reverse order.