



# How to replace the Nintendo 2DS charging port

This guide will teach you how to replace a...

Written By: Nick Myers



# INTRODUCTION

This guide will teach you how to replace a broken or damaged charging port in your Nintendo 2DS

## TOOLS:

Soldering Iron 60w Hakko 503F (1)

iFixit Precision 4 mm Screwdriver Bit (1)

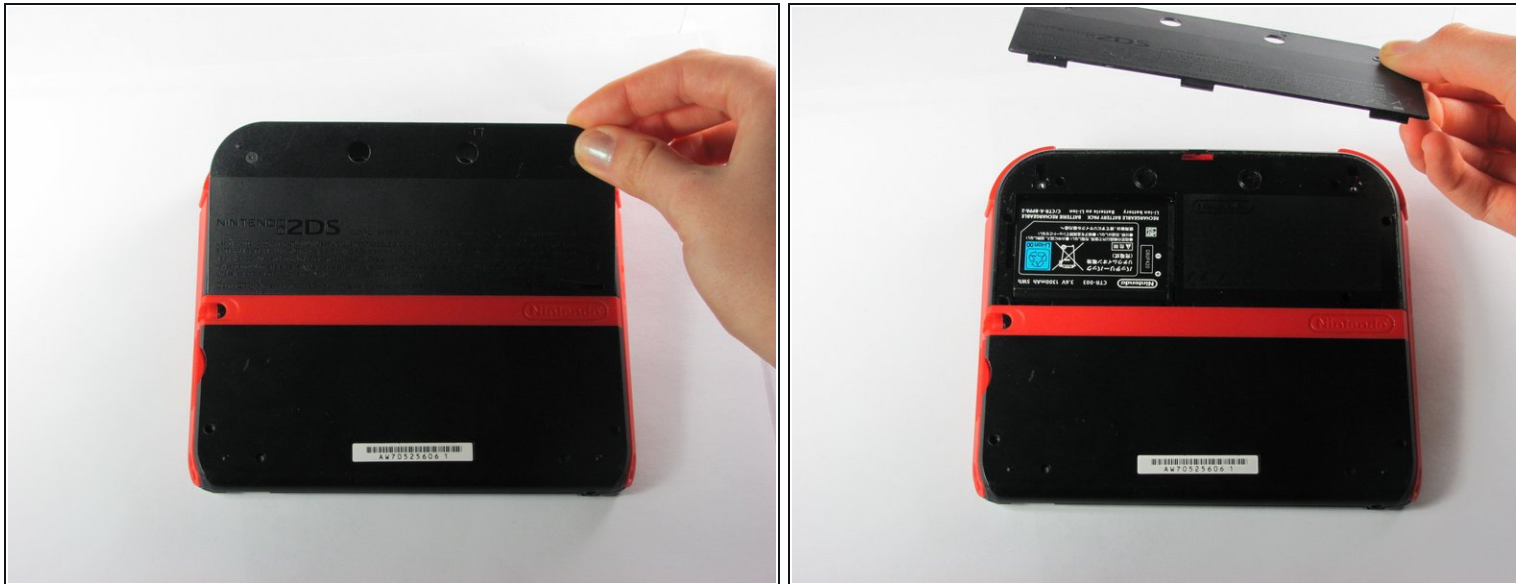
Phillips #00 Screwdriver (1)

## Step 1 — Battery



- Remove the two Phillips captive screws securing the upper rear panel.
- ⓘ The captive screws will not completely detach from the back panel.

## Step 2



- Hinge the upper rear panel upwards and outwards to remove it.

## Step 3



- Remove the battery from its housing by lifting it up from the side closest to the outside edge.

## Step 4 — Rear Panel



- Remove the ten Phillips screws attaching the rear panel.

## Step 5



- ❗ The rear panel is attached to the motherboard by a ribbon cable, so be careful not to lift the rear panel too far from the device.
- Carefully pull the rear panel straight up from the device.

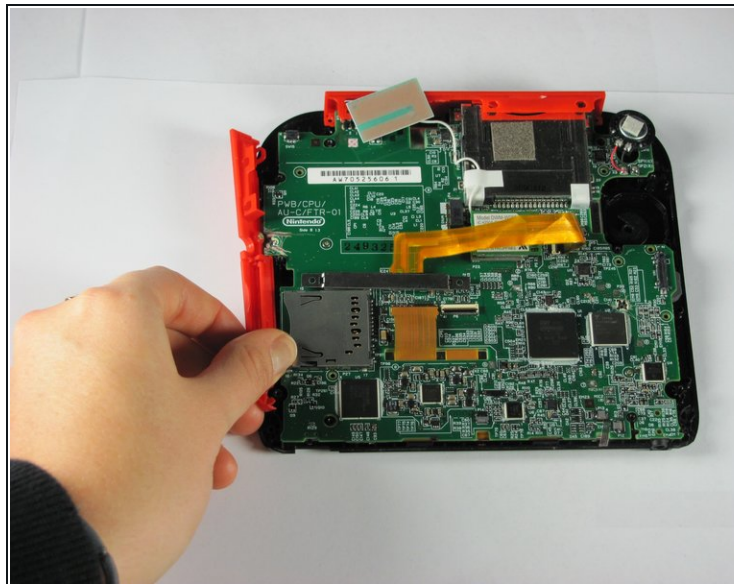
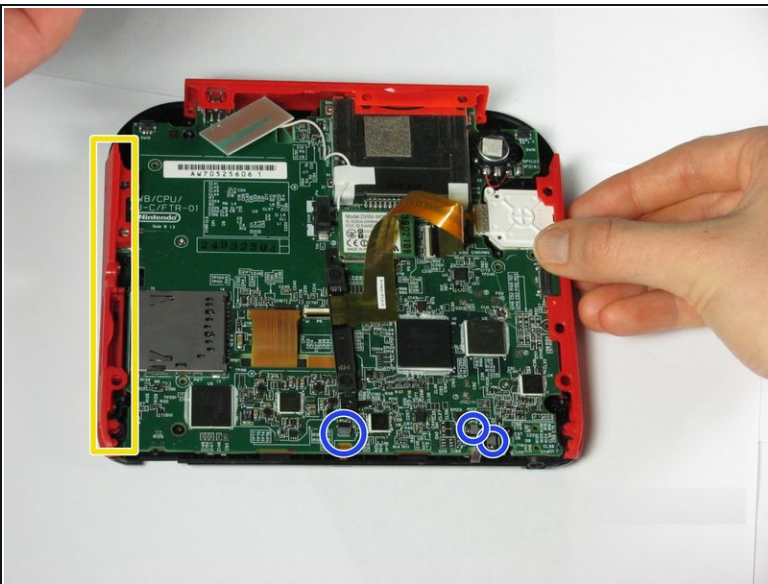


## Step 6



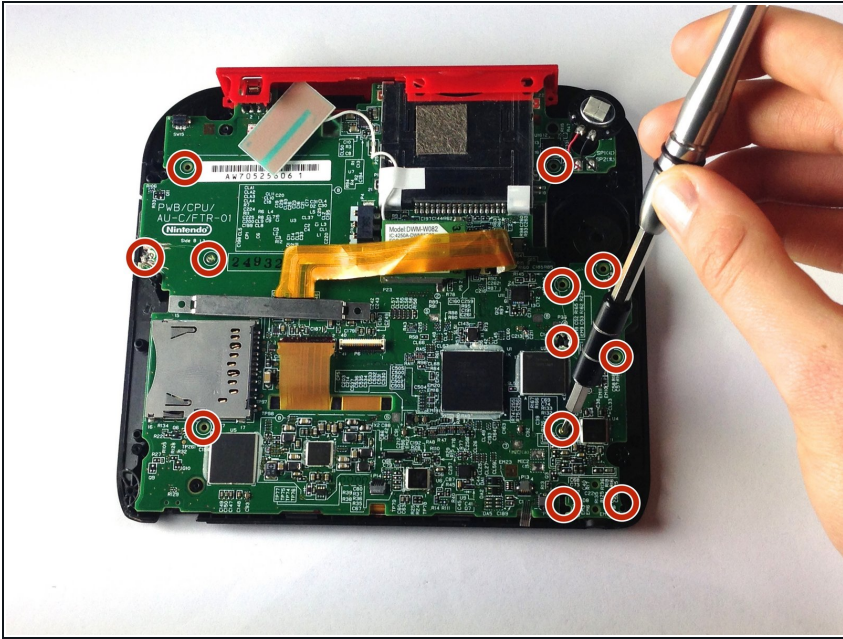
- Use your fingernail or the flat end of a spudger to flip up the connector securing the ribbon cable to the motherboard
- Remove the cable from the connector
- ⓘ Take the opportunity to remove the Left and Right triggers, they have hinges that may break and springs that may jump away.

## Step 7 — Remove Side Panels



- Hold the side panels of the device's case with your fingers and pull outward to remove them.
- ⓘ The panels should come off easily with little force required.
- There are three ribbon cables which have already been unplugged in this picture, disconnect these before disassembling the device further.

## Step 8 — Unscrew Motherboard

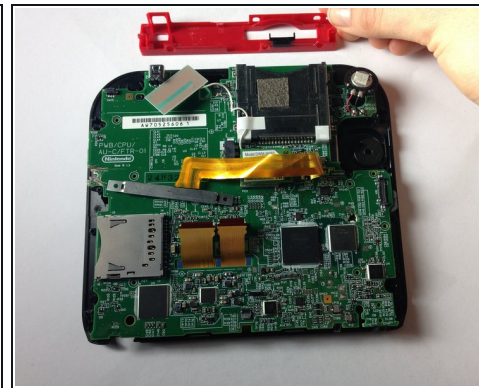
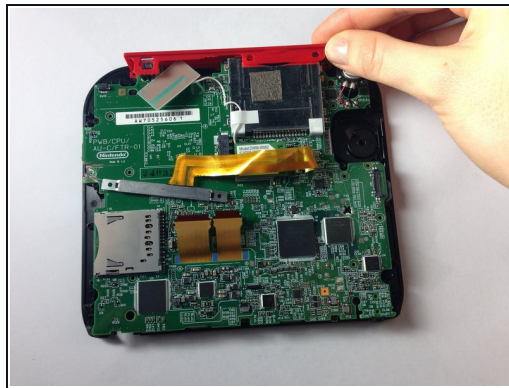
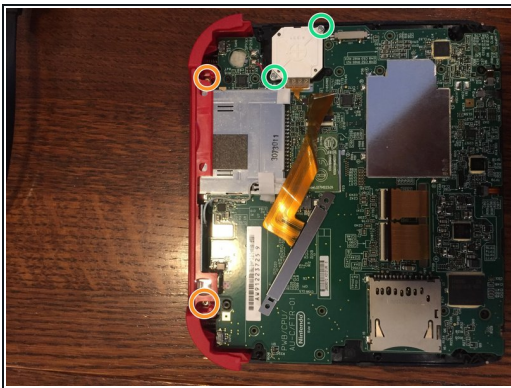


- Remove the 12 brass-colored Phillips screws securing the main board.

⚠ Be **very** careful not to strip any of these screws. Stripping can occur very easily, and may make replacement of the motherboard impossible.

ⓘ The circle pad has disappeared in this picture. Don't worry, we'll deal with that in the next step

## Step 9 — Remove Top Panel

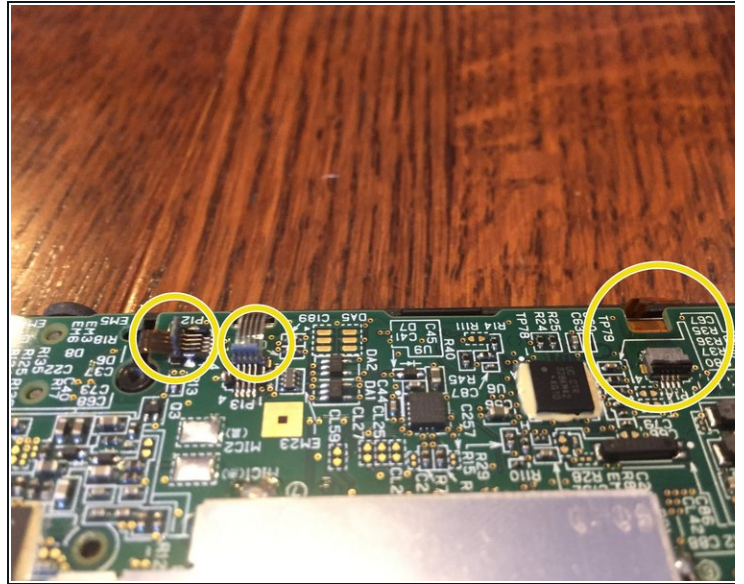
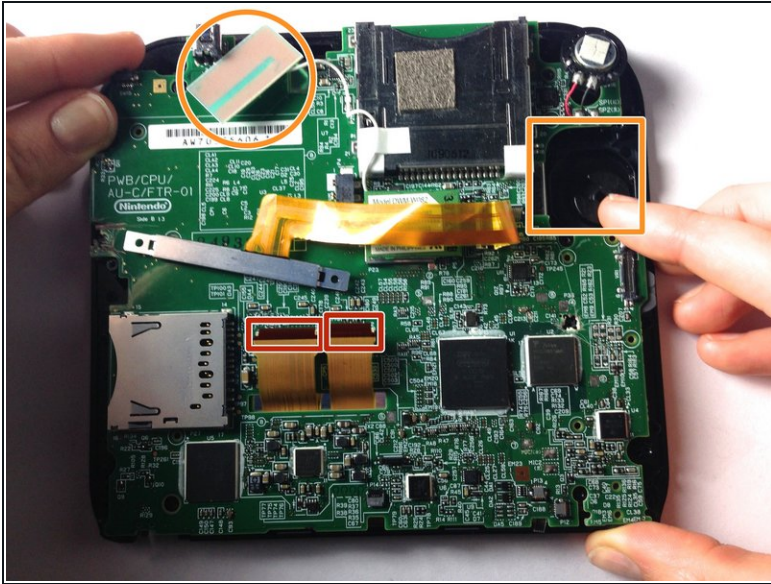


ⓘ The top panel can only be removed when the mother board is not secured.

- There are two additional screws located on the top rail. Remove these to fully remove the buttons and top rail.
- There are two screws holding down the joystick base that must be removed. (Be careful of the ribbon cable—it stays connected!)
- Hold the top panel with your fingers and pull away from the device to remove it.
- ⓘ The top panel should come off easily, with very little force applied.

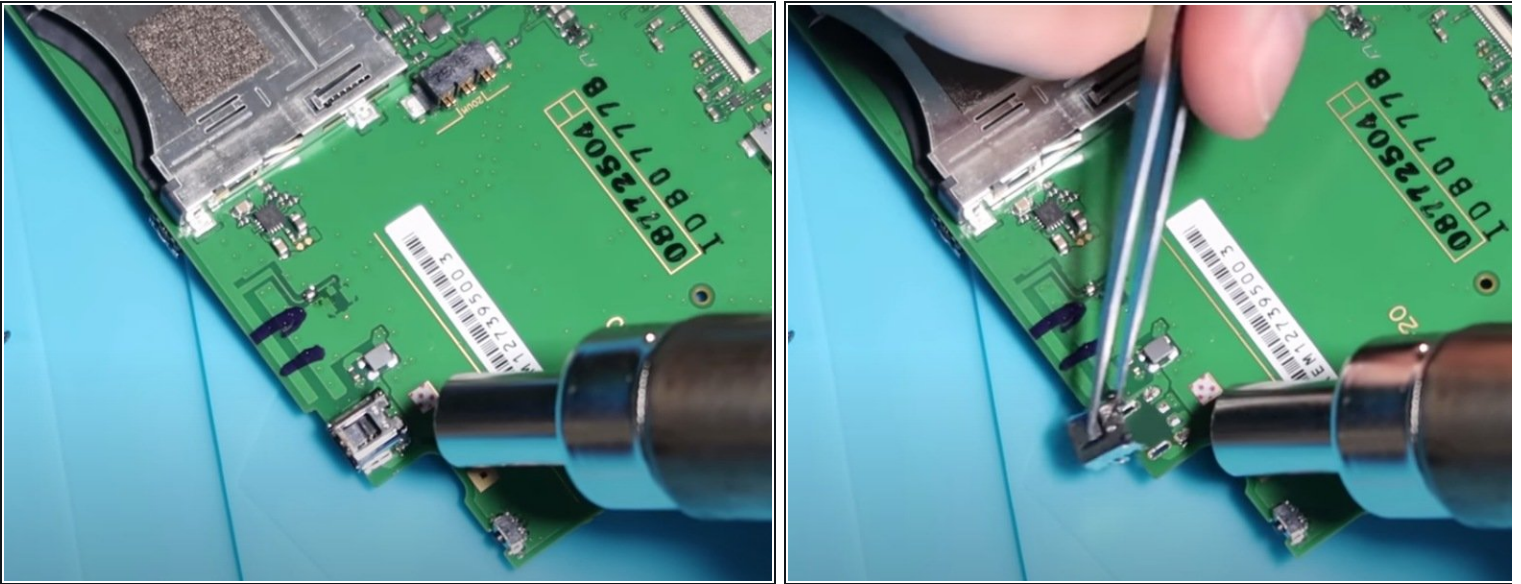


## Step 10 — Remove Motherboard



- Detach the 2 ribbon cables by lifting the black flip connectors that hold them.
- Lift out the rectangular board seated in the face and lift out the white square which is the joystick motor (takes a little effort). Both stay attached to the motherboard.
- On some models, you'll need to remove three more tiny ribbon cables at the bottom of the screen. They are secured by flip up connectors. BE GENTLE!
- Holding the motherboard on either side, lift to remove it.

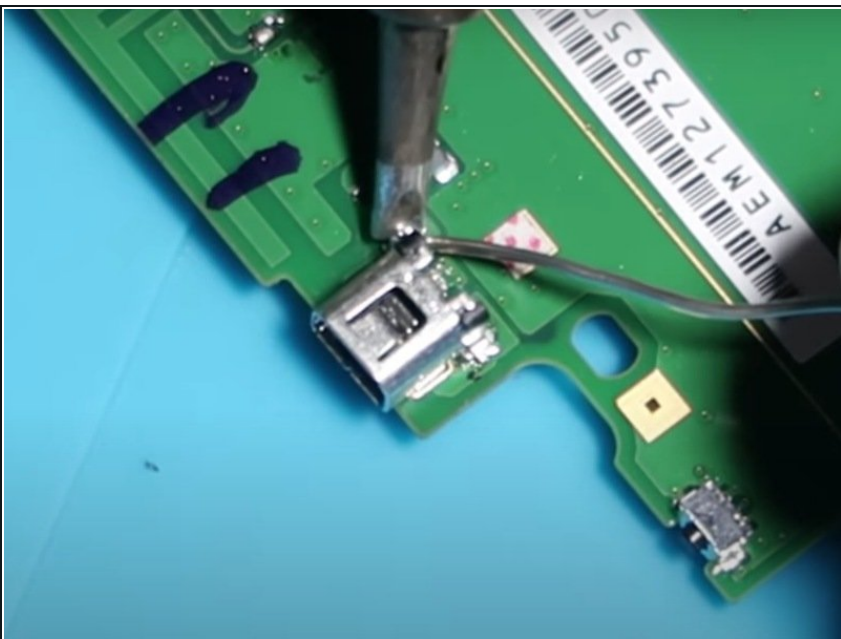
## Step 11 — Charging Port



- Desolder and remove the charging port

⚠ Don't try to force the port off the board. If it's not coming off, the solder isn't fully melted

## Step 12



- Set the new port in the board, then solder it in place

To reassemble your device, follow these instructions in reverse order, starting at step 10



