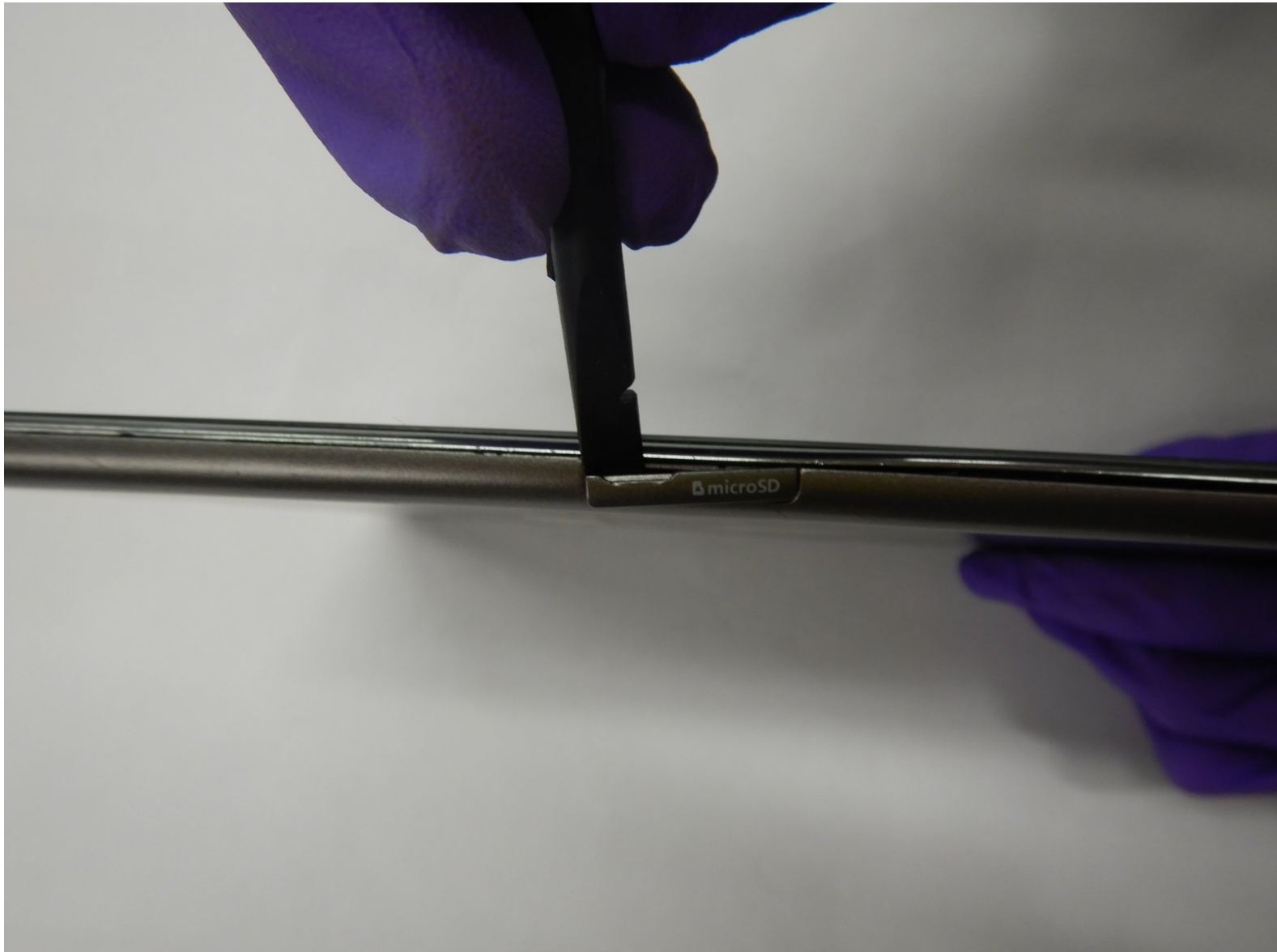




Samsung Galaxy Tab A 9.7 SD Card Replacement

This guide will show you how to remove and replace the SD Card for Samsung Galaxy Tab A 9.7

Written By: Jakob Gerald Schumacher



INTRODUCTION

If your device is unable to store information, you may be in need of a new or upgraded SD card. This guide will outline how to properly remove the SD card without damaging other parts of the device. The difficulty of this guide is very easy and it will not require any prior experience.

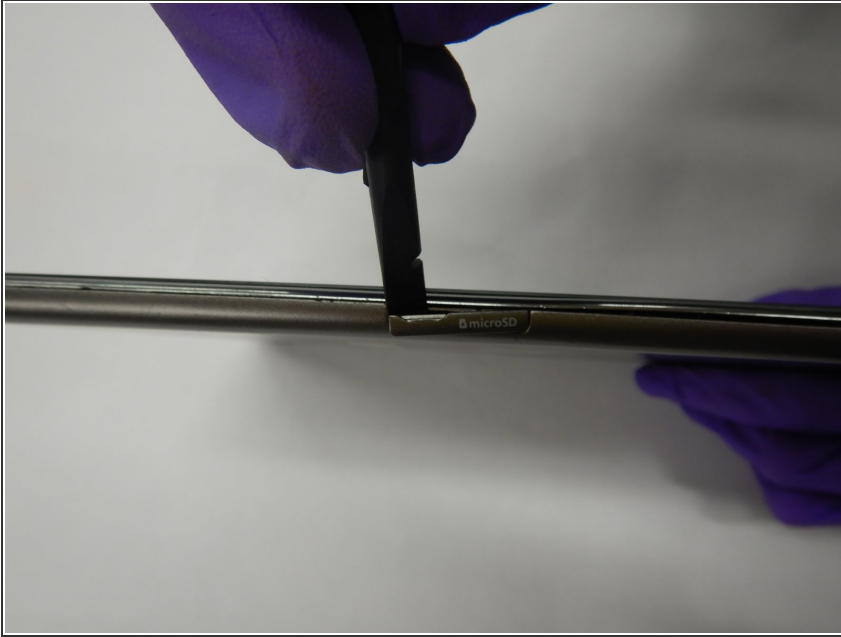
There is no SD card in the pictures but the area where the card is stored is clearly identified.



TOOLS:

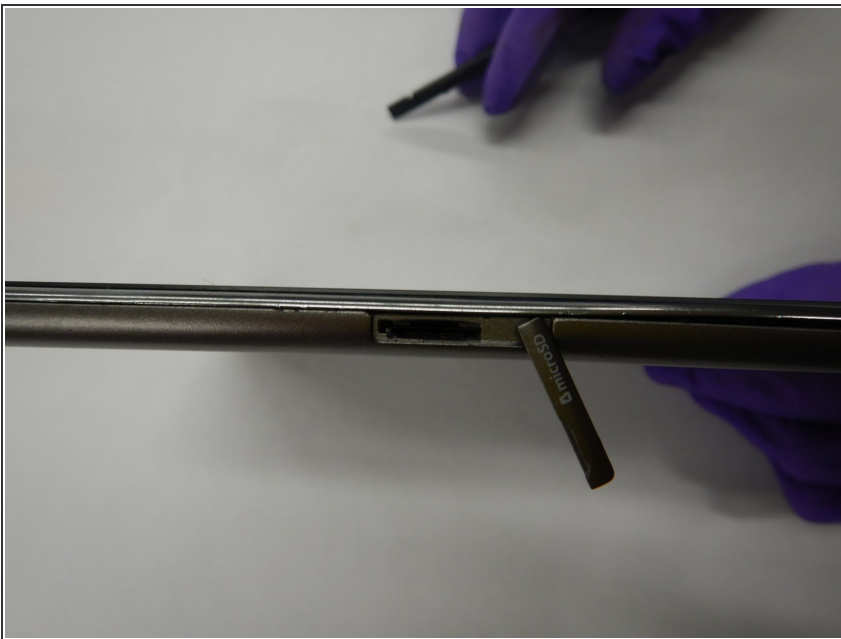
- [Spudger](#) (1)
-

Step 1 — SD Card



- Using a plastic spudger or finger nail, Open the port labeled micro SD using a plastic spudger or finger nail.

Step 2



- If the SD port is occupied, use a plastic spudger or finger nail gently press the SD card and allow it to protrude.

To reassemble your device, follow these instructions in reverse order.