



# Samsung Galaxy Tab A 9.7 Button Replacement

This guide will show you how to remove and replace the home button on the front of the Galaxy Tab A 9.7

Written By: Jakob Gerald Schumacher



---

## INTRODUCTION

This replacement guide will help you easily follow the steps in order to replace the home button on a Samsung Galaxy Tab A 9.7. If the home button is broken or unresponsive the button should be replaced. The difficulty of this guide is moderate and requires special attention to details.

Ensure to take precautions and store properly when removing small screws.



### TOOLS:

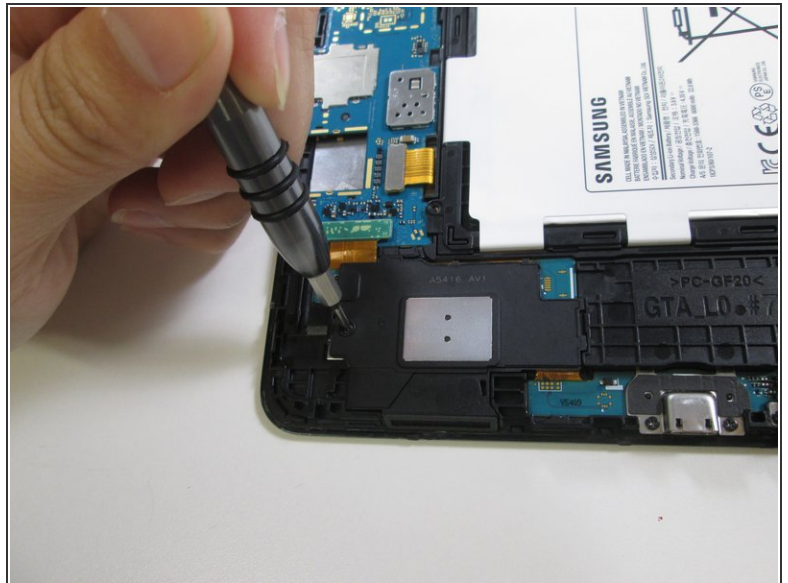
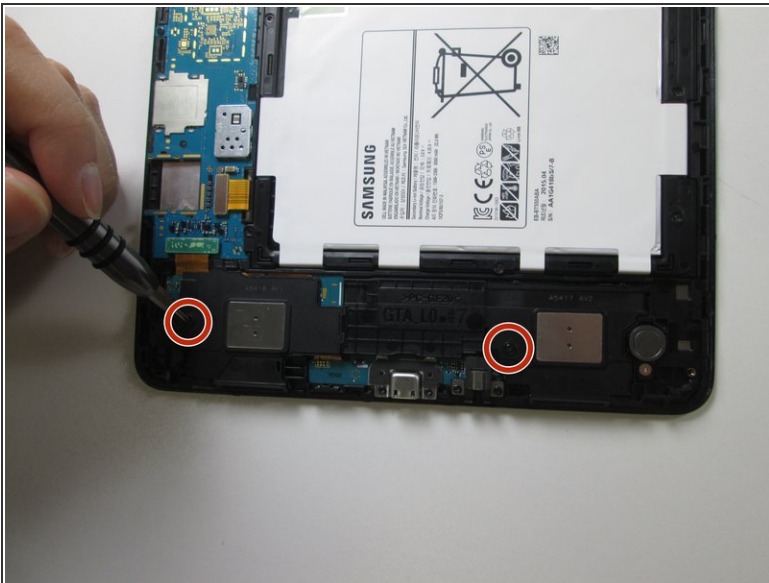
- [Heavy-Duty Spudger](#) (1)
  - [iFixit Opening Tools](#) (1)
  - [Spudger](#) (1)
  - [Tweezers](#) (1)
  - [Metal Spudger](#) (1)
  - [Phillips #000 Screwdriver](#) (1)
-

## Step 1 — Back Cover



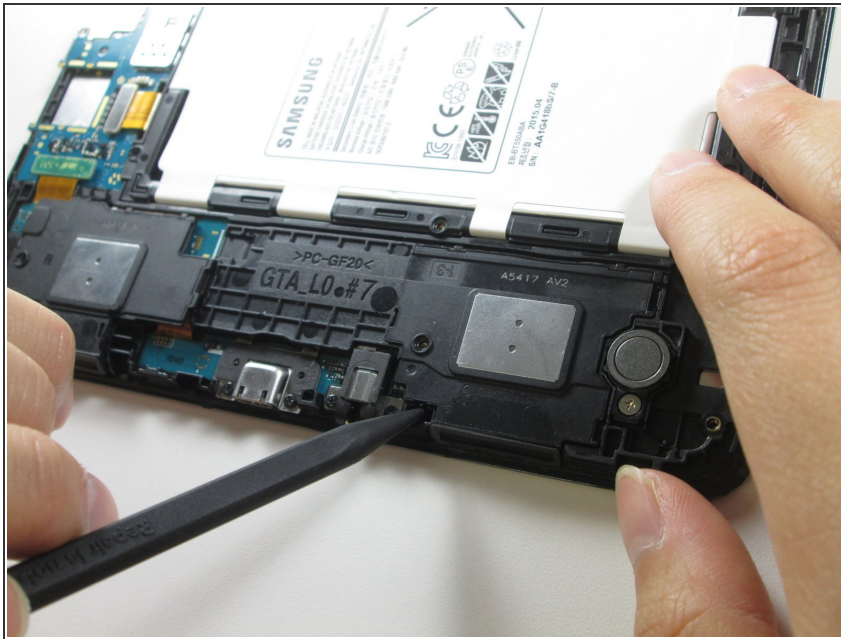
- Insert a metal spudger between the back case and the screen of the device.
- ⓘ The back cover is attached to the device by a series of snaps. The snaps are positioned about an inch from each other.
- Move the spudger along the perimeter of the device while it is in between the back case and the screen to open each snap.
- ⓘ There will be an audible click every time a snap releases.

## Step 2 — Speakers



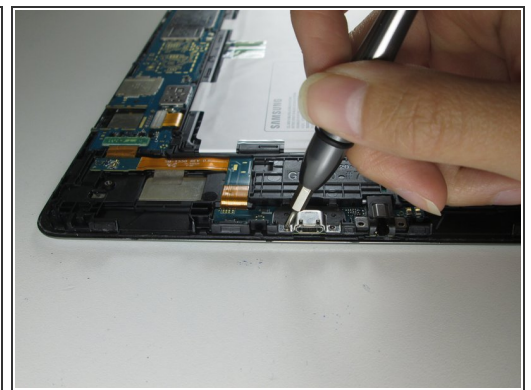
- Remove the two 2.8 mm Phillips #000 screws from the speakers.

## Step 3



- ❗ Each speaker is now only connected to the main device by small plastic snaps.
- Pry the speakers from the device at these two points using the heavy duty spudger.

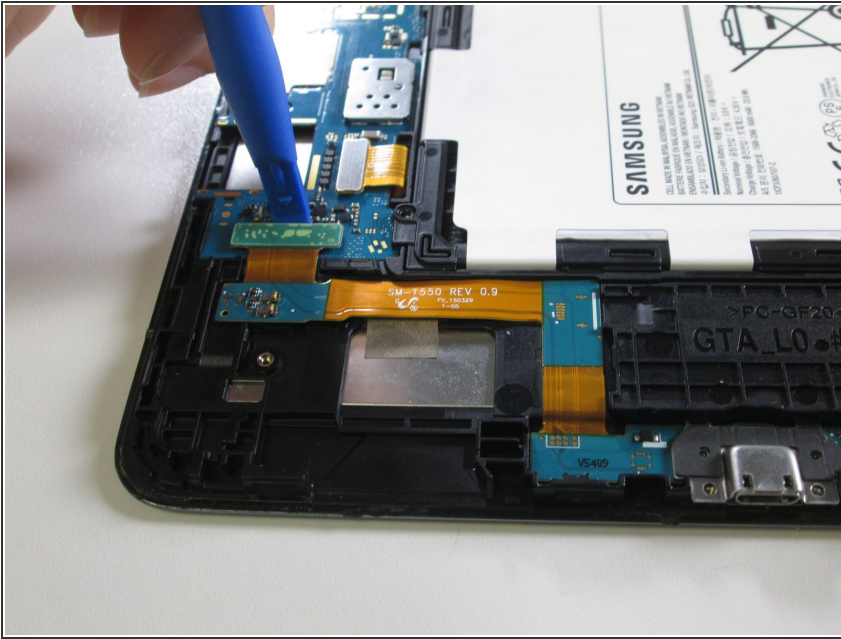
## Step 4 — Charging Port



- Remove the four 2.8mm #000 Phillips screws that hold the charging port and headphone jack in place.



## Step 5



- Disconnect the green square connector from the motherboard. To do so, put the flat end of the plastic opening tool underneath the connector and push down.

- ☑ During reassembly, two clicks signify the charging board is completely attached to the motherboard.

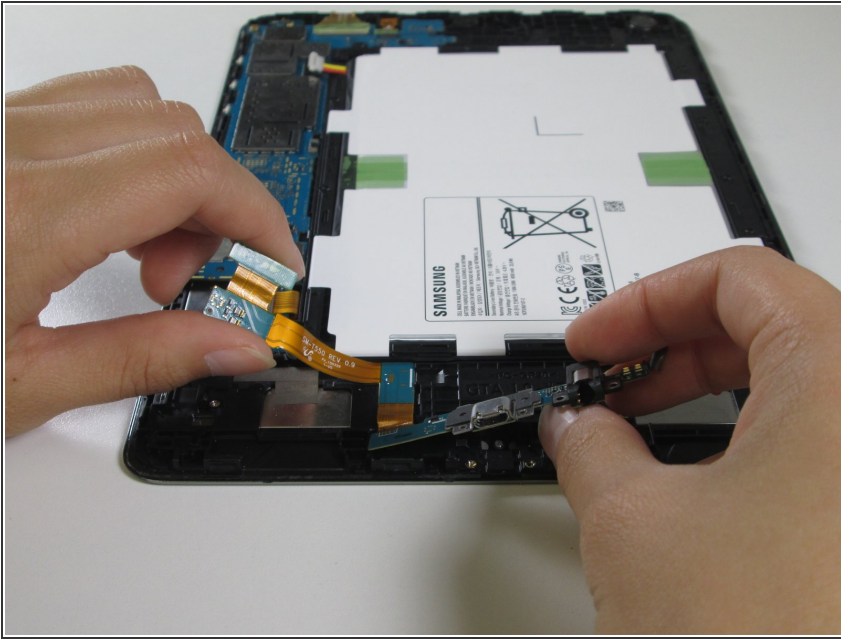
## Step 6



- Place the heavy duty spudger underneath the charging port and push down to remove the charging port.

- ☑ To reinsert the charging port, angle the port downwards towards the battery. Then press down the outside edge of the charging port.

## Step 7



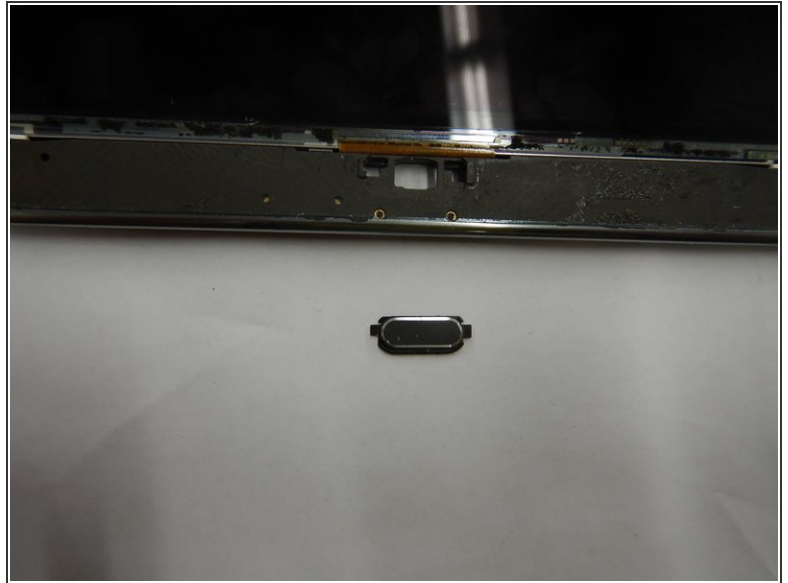
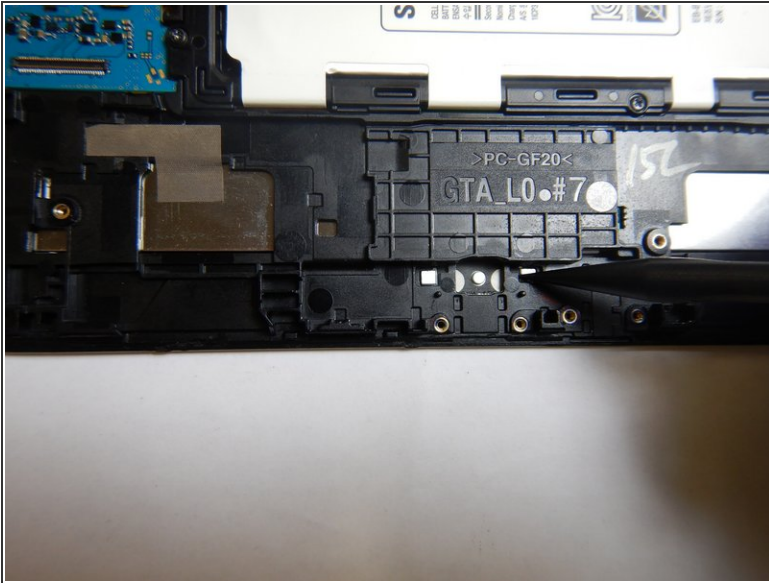
- Peel the charging assembly from the device to completely remove the charging port from the device.

## Step 8 — Button



- Using a plastic spudger, work around the edge of the screen, prying the screen away from the device.
- Once the the cover is removed, set it aside.

## Step 9



- Using the tweezers or a plastic spudger, press on the back of the button until it pops out.

To reassemble your device, follow these instructions in reverse order.