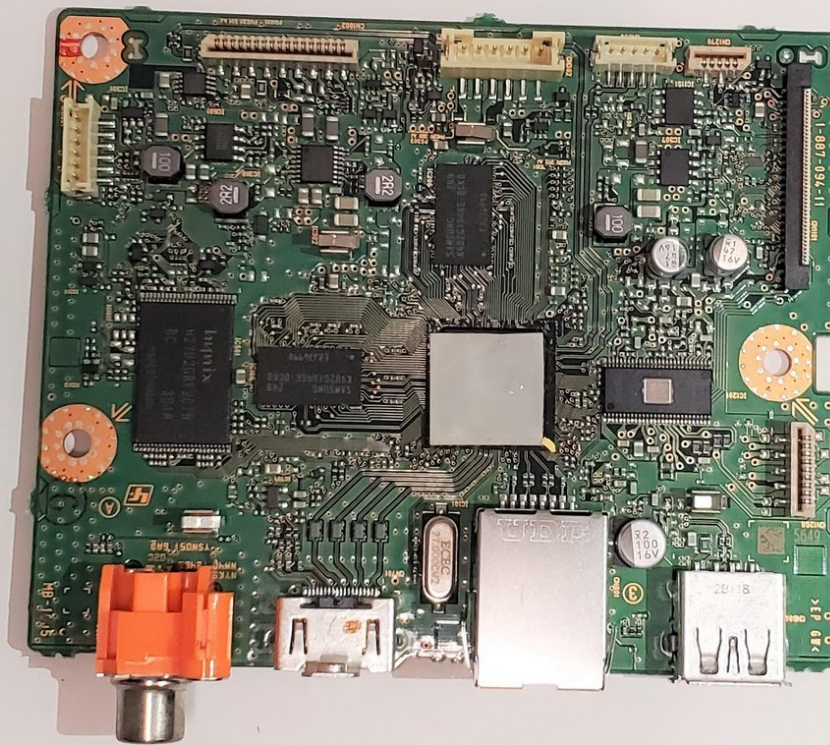




# Sony BDP-BX510 Motherboard Replacement

This guide will help you replace your damaged motherboard in your Sony BDP-BX510.

Written By: Tae (Tim) Im



## INTRODUCTION

In the situation that your Sony BDP-BX510 motherboard is not working, you may need to replace it. This guide will provide you with the steps required to safely remove your motherboard for replacement. The tools that are needed include a Phillips #2 screwdriver, Phillips #1 screwdriver, tweezers, and metal spudger.



### TOOLS:

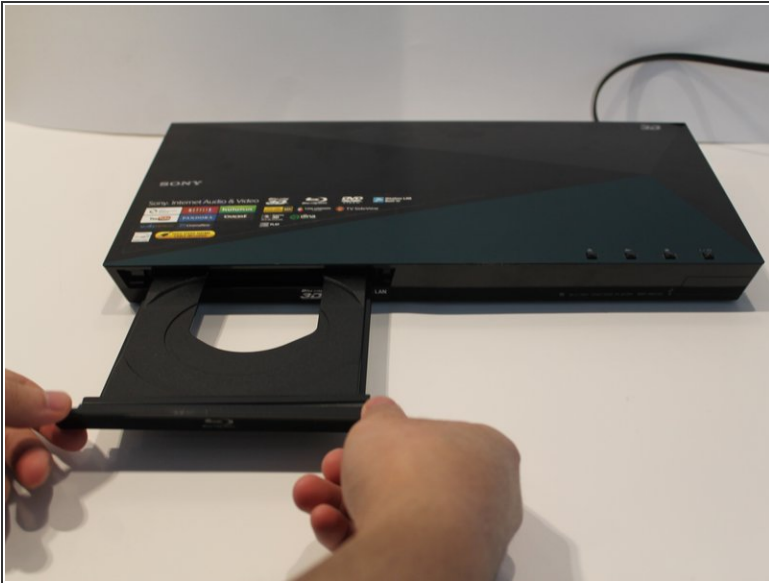
- [Phillips #2 Screwdriver](#) (1)
  - [Phillips #1 Screwdriver](#) (1)
  - [Tweezers](#) (1)
  - [Metal Spudger](#) (1)
-

## Step 1 — Outer Cover



- Plug in the device to turn it on, then press the eject ( ▲ ) button to open the tray.

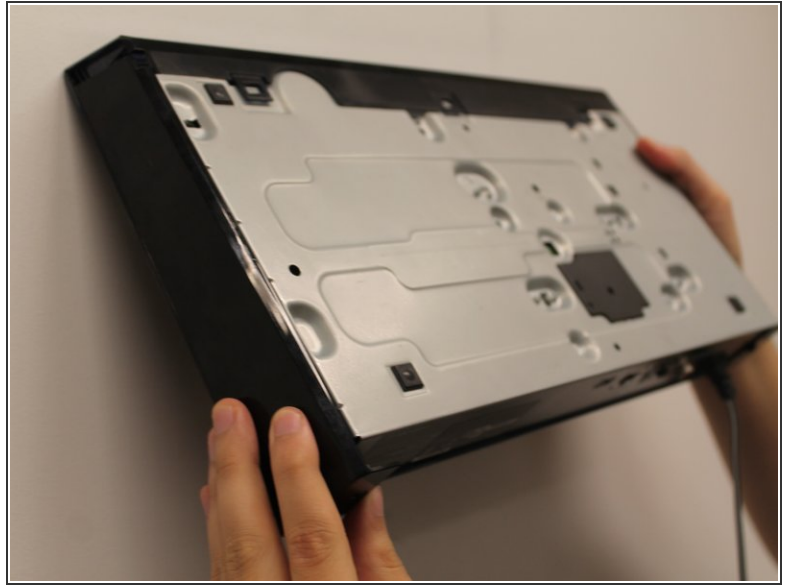
## Step 2



- To remove the tray cover, hold both sides of the tray cover and gently apply a downward pressure.
- Apply slightly more pressure to the left side until it unhooks then unhook the right side.
- Close the disk tray by pressing the eject button again, then power off the device and unplug it.

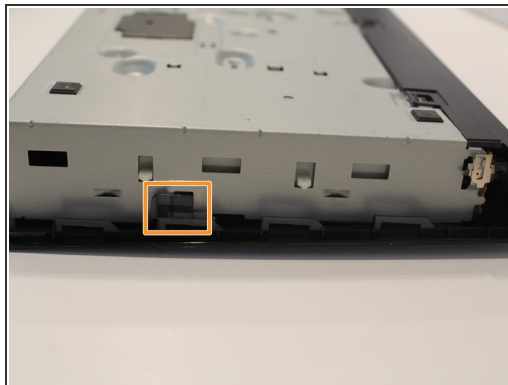
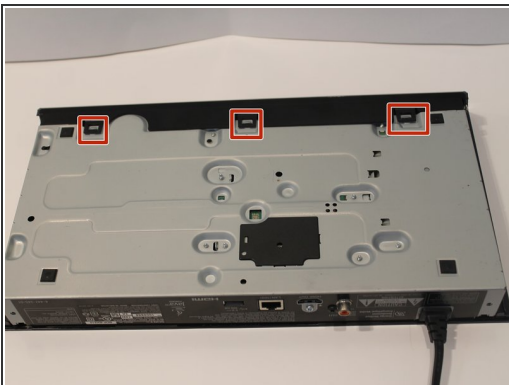
 Do not use too much force to remove the tray cover as you may break it.

## Step 3



- Turn to the back of the device.
- Remove the two 7mm Phillips #2 screws.
- Slide the two plastic covers on both sides of the device towards the back of the device to remove them.

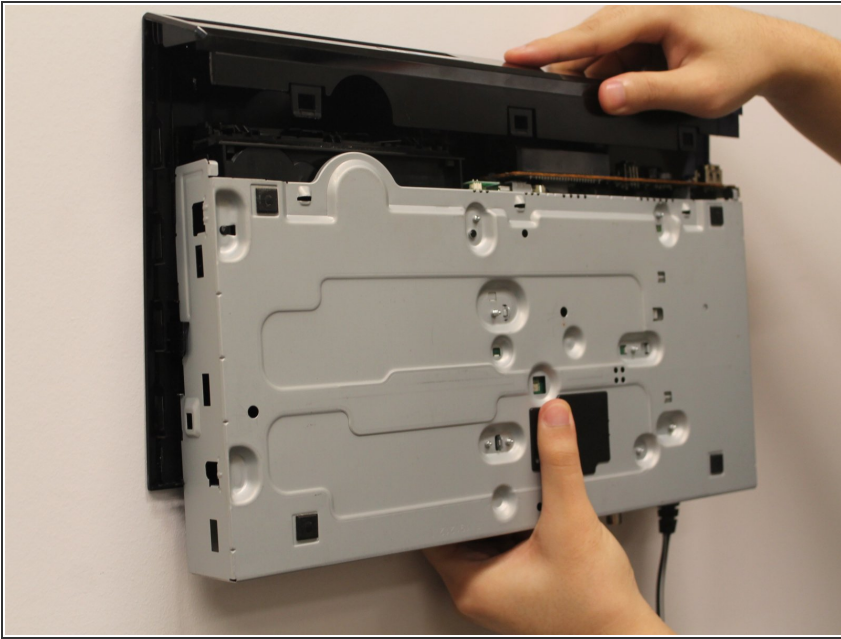
## Step 4



- Turn the device so you can see the bottom.
- Unclip the three black plastic clips on the bottom of the device.
- Unclip one clip on each side of the device.

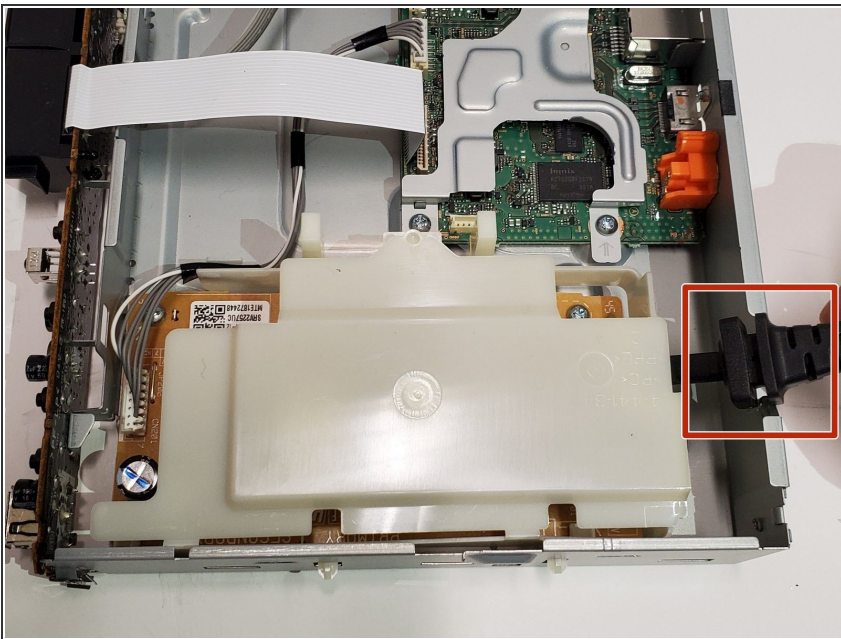


## Step 5



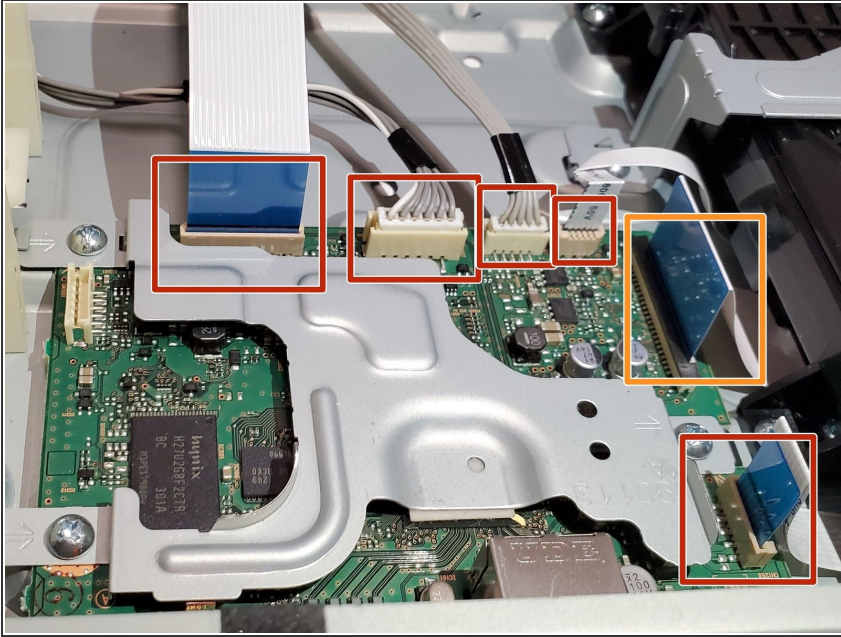
- Slide the cover forward to remove.

## Step 6 — Motherboard



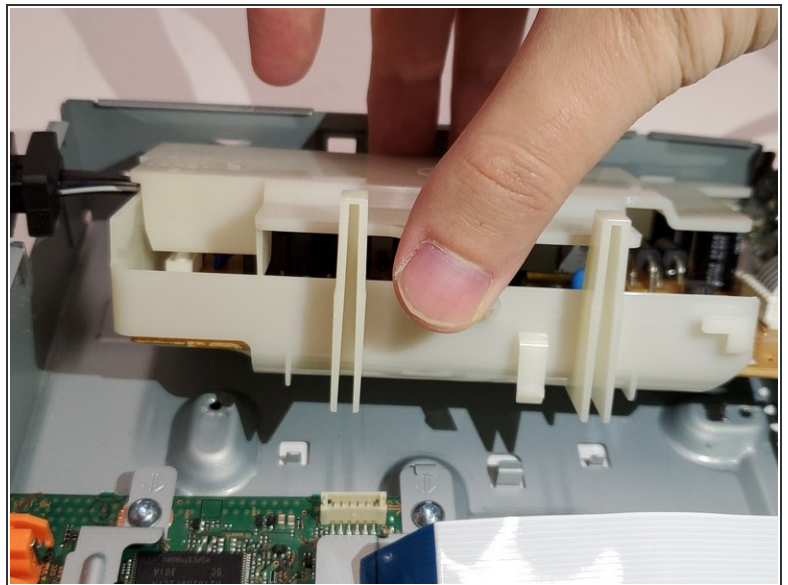
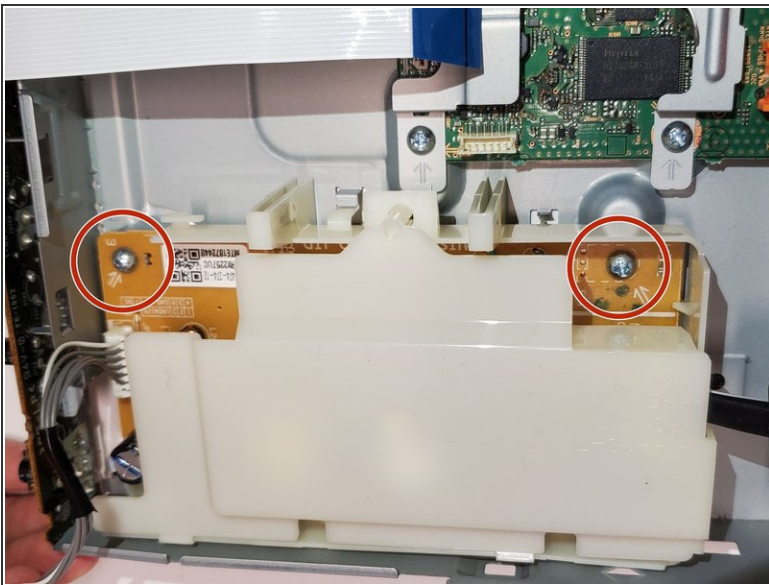
- Pull out the power cord from the device.

## Step 7



- Pull out these cables from the motherboard.
  - Using tweezers, lift the black tab on the connector of the large 45 pin connector on the motherboard.
  - Pull the large 45 pin ribbon cable out of the connector in the motherboard.
- ⚠ Do not use excessive force to remove the cables and do not forcibly pull out the 45 pin ribbon cable as you could damage it. Once the black tab is lifted it should come out easily.

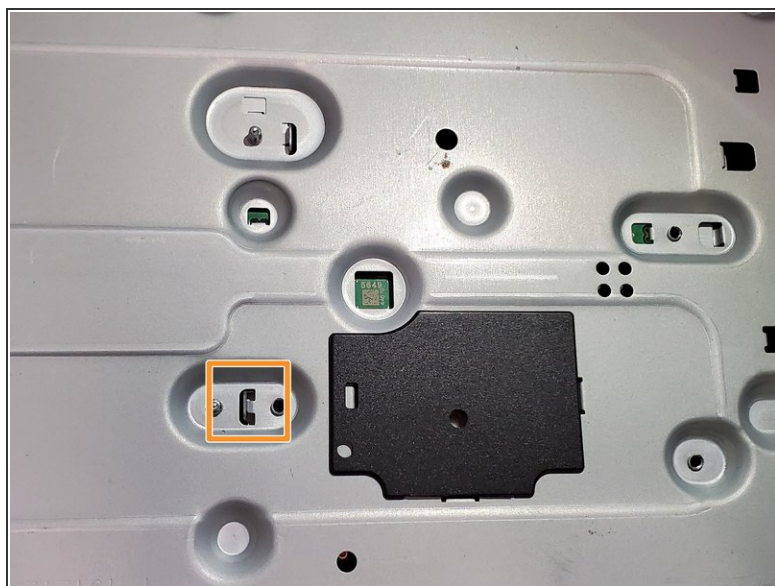
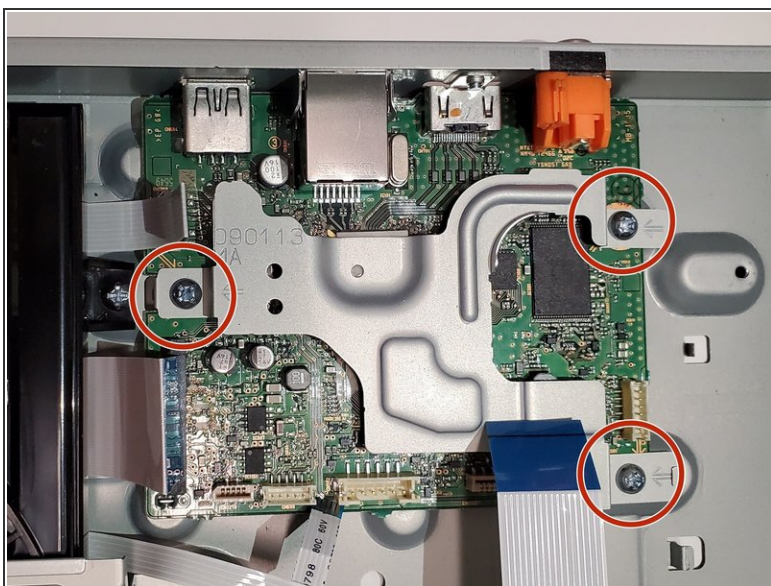
## Step 8



- Remove the two 5mm Phillips #1 screws.
- Lift the side of the power module and remove it.



## Step 9



- Remove the three 5mm Phillips #1 screws.
- Turn the device over to the backside.
- Use tweezers or metal spudger to take off the metal clasp for the metal brace near the center on the bottom of the device.
- Remove the metal brace.



## Step 10



- Turn to the back of the device.
- Remove the silver 3mm Phillips #1 screw.
- Remove the black 7mm Phillips #1 screw.
- Lift the side of the motherboard and pull it out.

To reassemble your device, follow these instructions in reverse order.