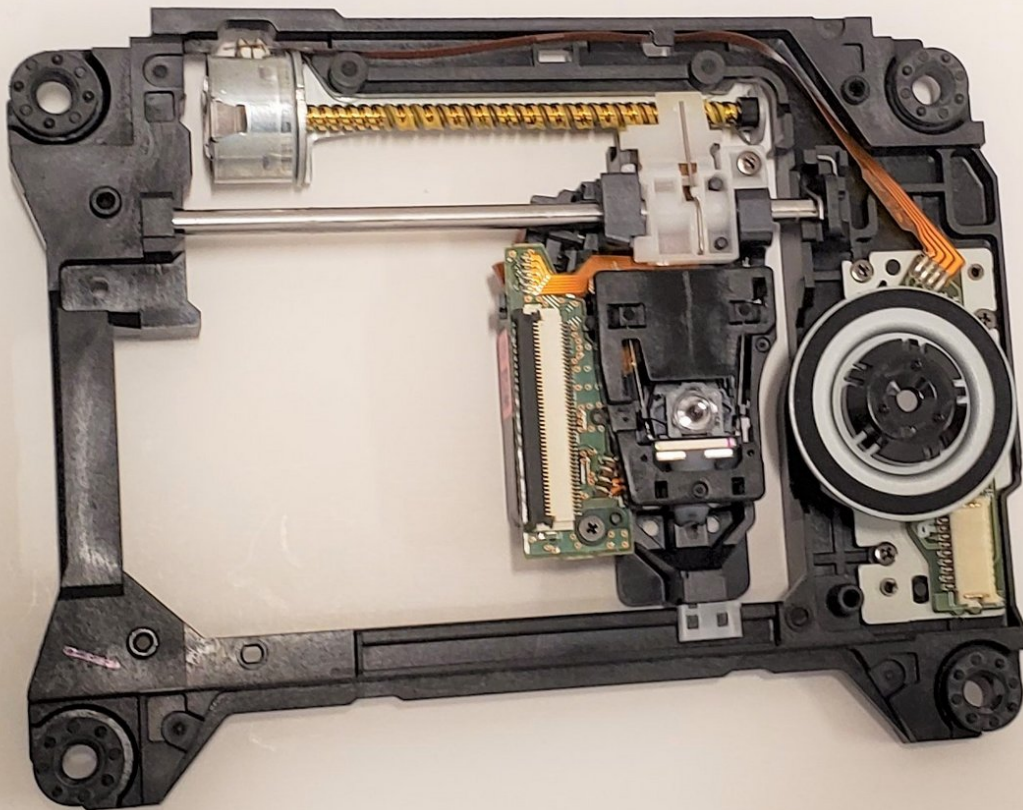




# Sony BDP-BX510 Disk Reader Replacement

This guide will help you replace your damaged Disk Reader in your Sony BDP-BX510.

Written By: Tae (Tim) Im



## INTRODUCTION

In the situation that your disk reader is not working despite trying the solutions on the [troubleshooting page](#), you may need to replace it . This guide will provide you with the steps required to safely remove your disk reader for replacement. The tools that are needed include a Phillips #2 screwdriver, Phillips #0 screwdriver, tweezers, and metal spudger.



### TOOLS:

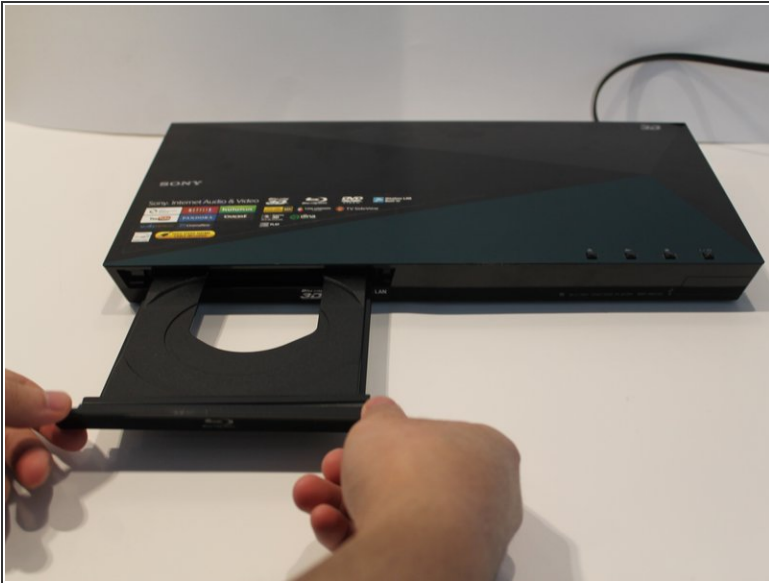
- [Phillips #0 Screwdriver](#) (1)
- [Phillips #2 Screwdriver](#) (1)
- [Tweezers](#) (1)
- [Metal Spudger](#) (1)

## Step 1 — Outer Cover



- Plug in the device to turn it on, then press the eject ( ▲ ) button to open the tray.

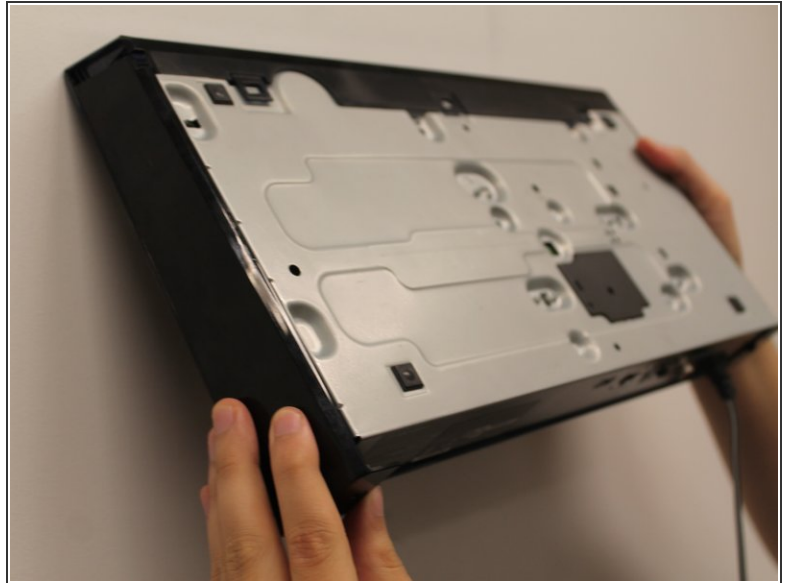
## Step 2



- To remove the tray cover, hold both sides of the tray cover and gently apply a downward pressure.
- Apply slightly more pressure to the left side until it unhooks then unhook the right side.
- Close the disk tray by pressing the eject button again, then power off the device and unplug it.

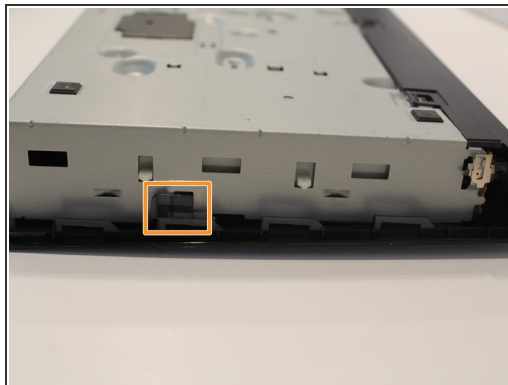
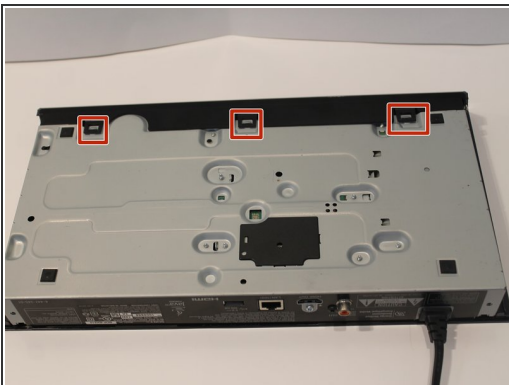
 Do not use too much force to remove the tray cover as you may break it.

## Step 3



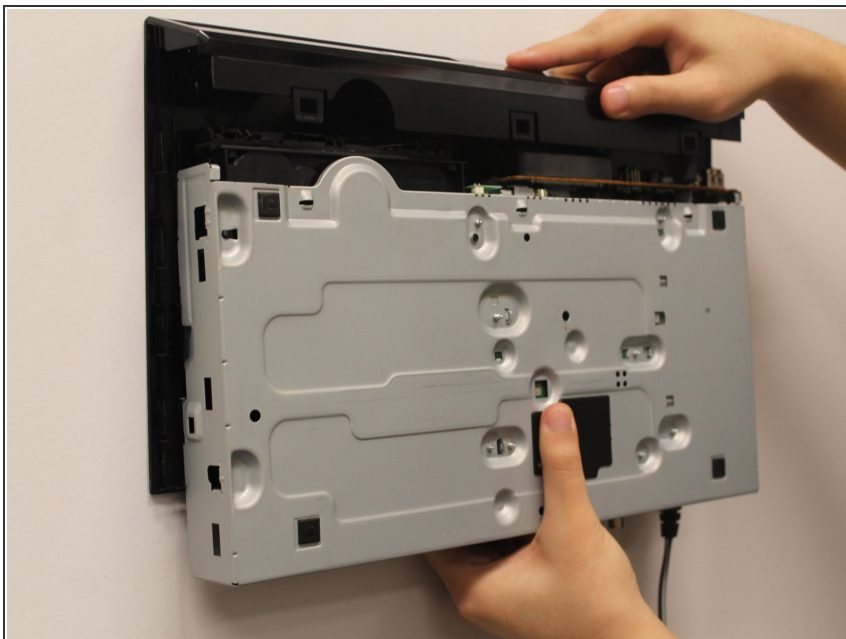
- Turn to the back of the device.
- Remove the two 7mm Phillips #2 screws.
- Slide the two plastic covers on both sides of the device towards the back of the device to remove them.

## Step 4



- Turn the device so you can see the bottom.
- Unclip the three black plastic clips on the bottom of the device.
- Unclip one clip on each side of the device.

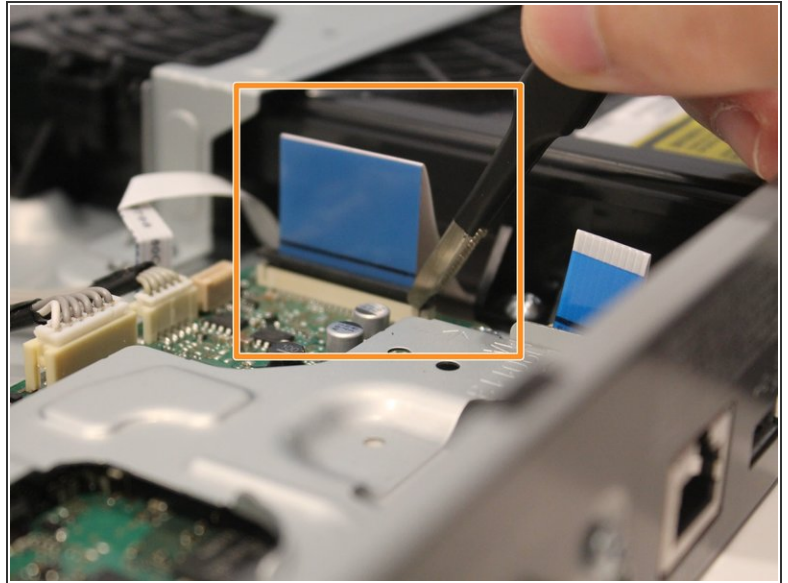
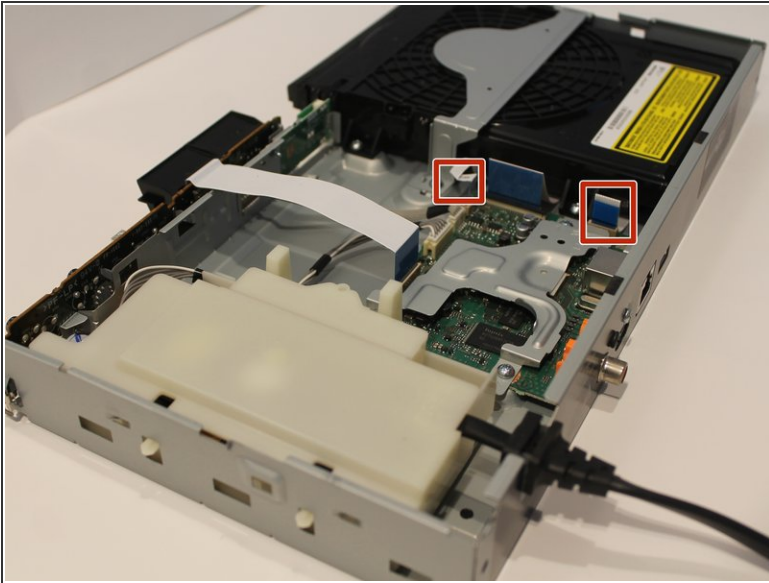
## Step 5



- Slide the cover forward to remove.

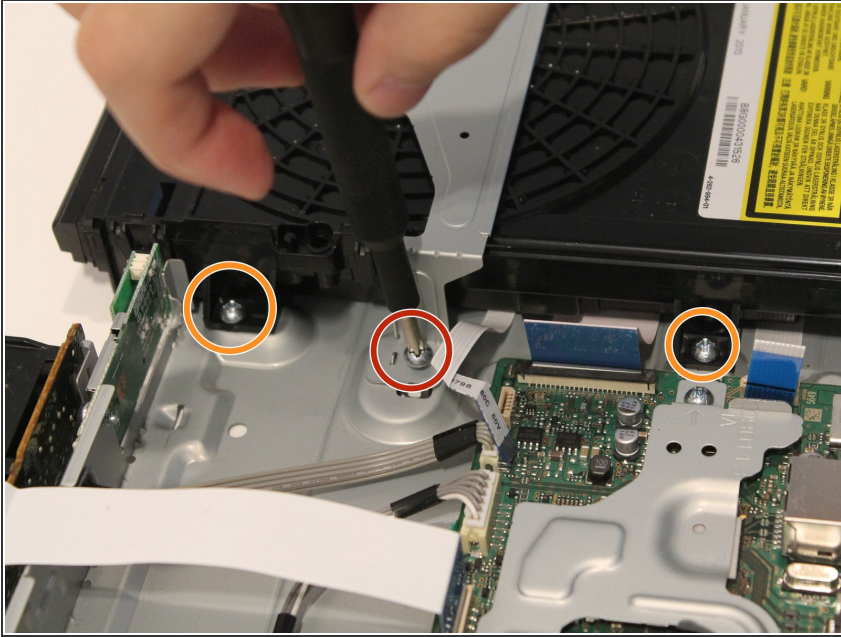


## Step 6 — Disk Tray



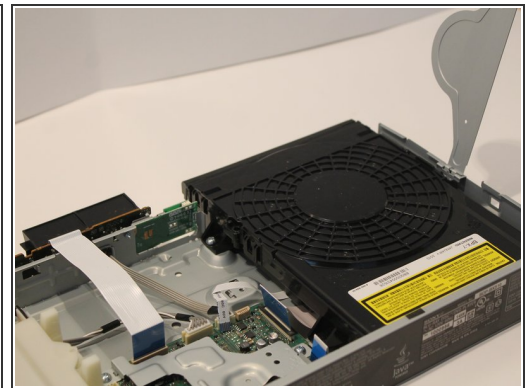
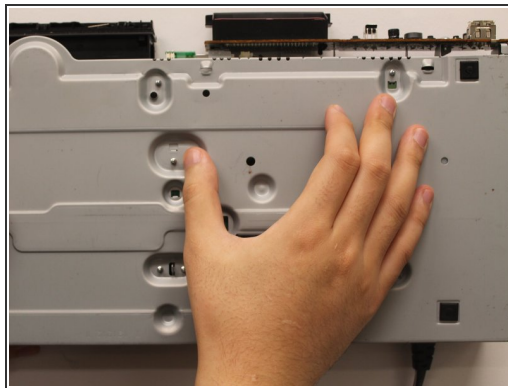
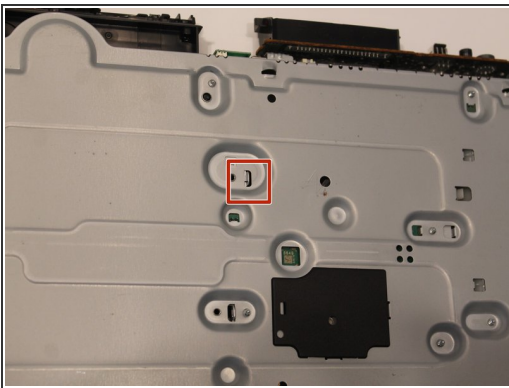
- Pull the medium-sized 9 pin ribbon cable and the small 5 pin ribbon cable out of their connector in the motherboard.
  - Using tweezers, lift the black tab on the connector of the large 45 pin connector on the motherboard.
  - Pull the large 45 pin ribbon cable out of the connector in the motherboard.
- ⚠ Be very careful. The goal is to slightly lift the pin connector, not to completely detach it. Do not forcibly pull.

## Step 7



- Remove the 5mm Phillips #2 screw holding the metal brace above the disk tray.
- Remove the two 5mm Phillips #2 screws that hold the disk tray to the metal case on the bottom.

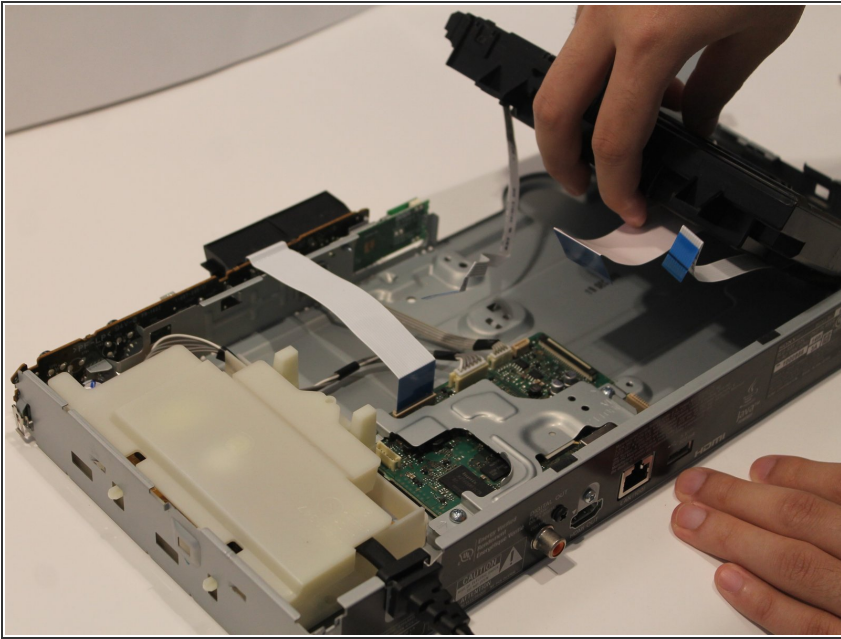
## Step 8



- Turn the device over to the backside.
- Use tweezers or hands to take off the metal clasp for the metal brace near the center on the bottom of the device.

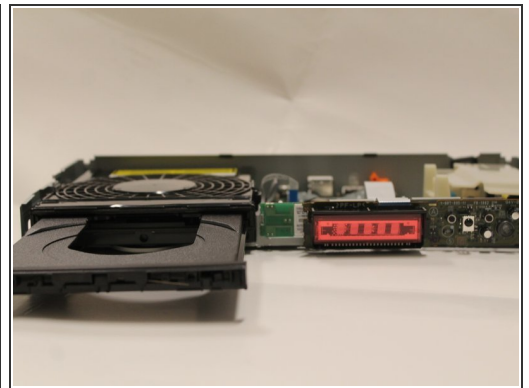
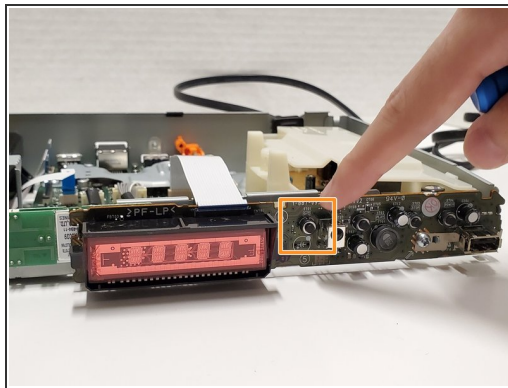
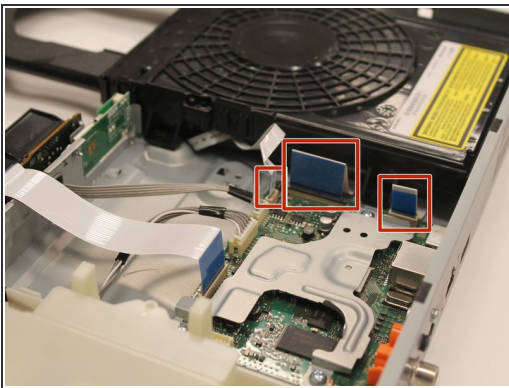


## Step 9



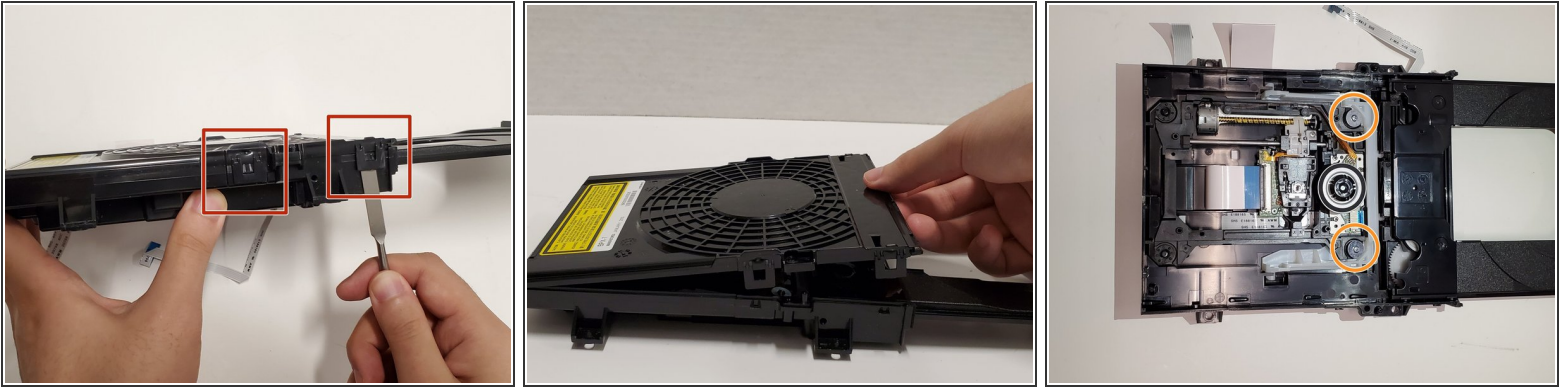
- Remove the metal brace then remove the disk tray.

## Step 10 — Disk Reader



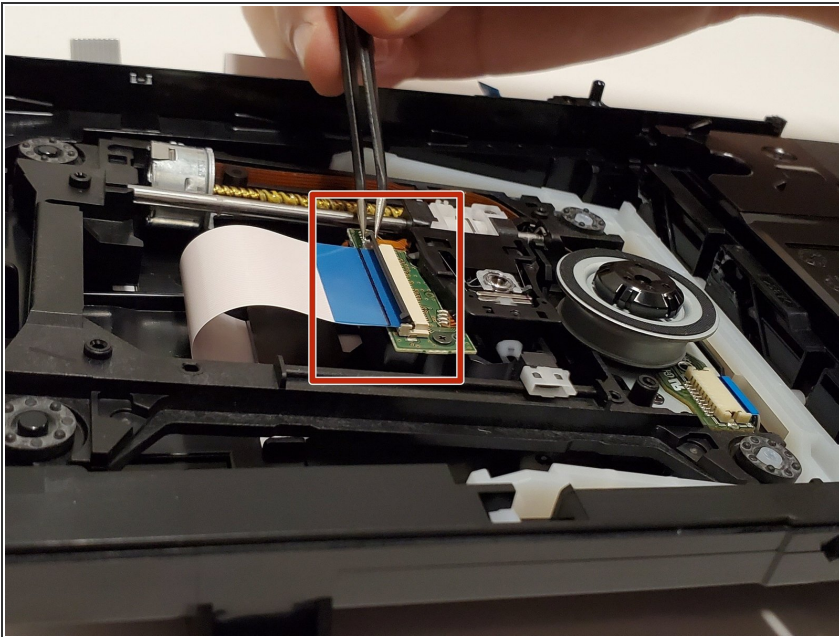
- Connect the three cables.
- Plug the device in and press the eject button to open the disk tray.
- Unplug the device.
- Disconnect the three cables.

## Step 11



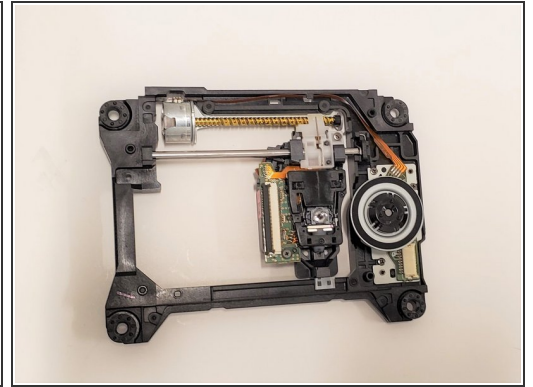
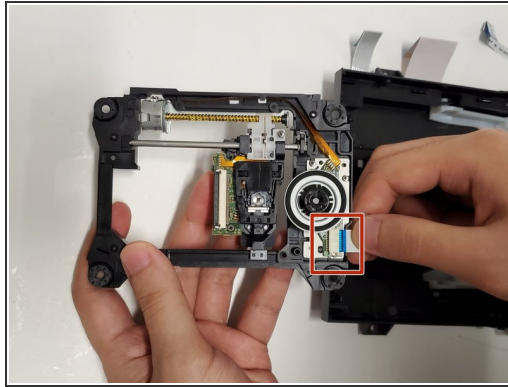
- Locate and unclip the plastic clips on the sides of the disk tray using a metal spudger. There are two on each side of the disk tray.
- Lift open and remove the top cover of the disk tray.
- Remove the two 6mm Phillips #0 screws from the disk reader.

## Step 12



- Using tweezers, lift the black tab on the connector of the large ribbon cable on the disk reader.
  - Pull the large ribbon cable out of the connector in the disk reader.
- ⚠ Do not forcibly pull out the large ribbon cable as you could damage it. Once the black tab is lifted it should come out easily.

## Step 13



- Lift the disk reader carefully.
- ⚠ Do not lift the disk reader roughly as there is small cable attached to it.
- Pull the small ribbon cable out of the disk reader.

To reassemble your device, follow these instructions in reverse order.