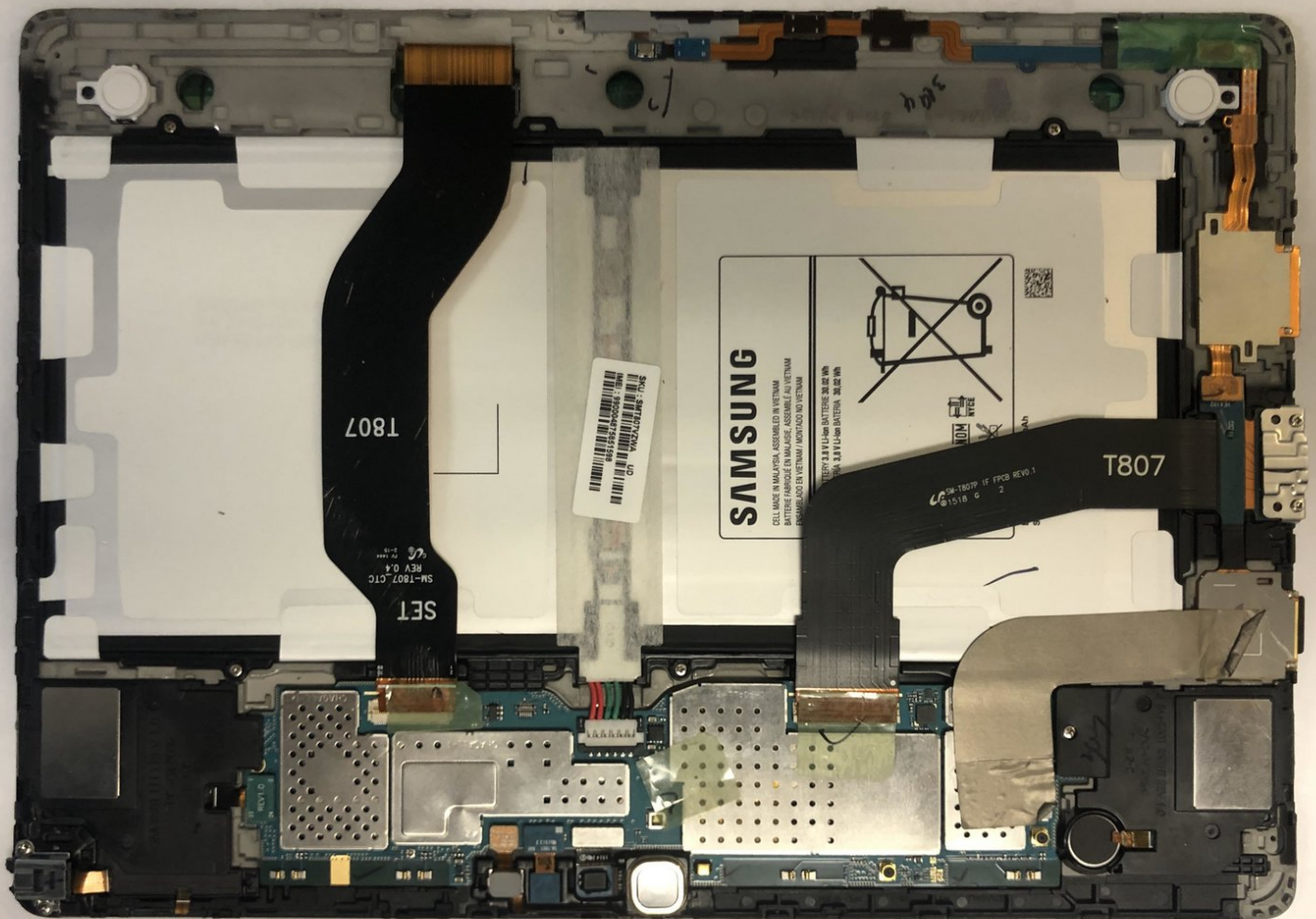




Samsung Galaxy Tab S 10.5 Motherboard Replacement

This guide will serve you well to replace the motherboard on your Samsung Galaxy Tab S 10.5.

Written By: Kyle DiLiddo



INTRODUCTION

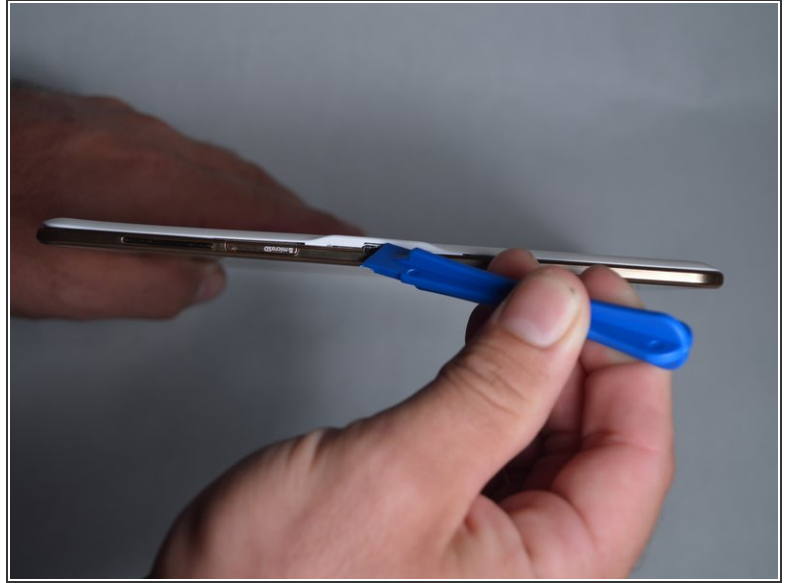
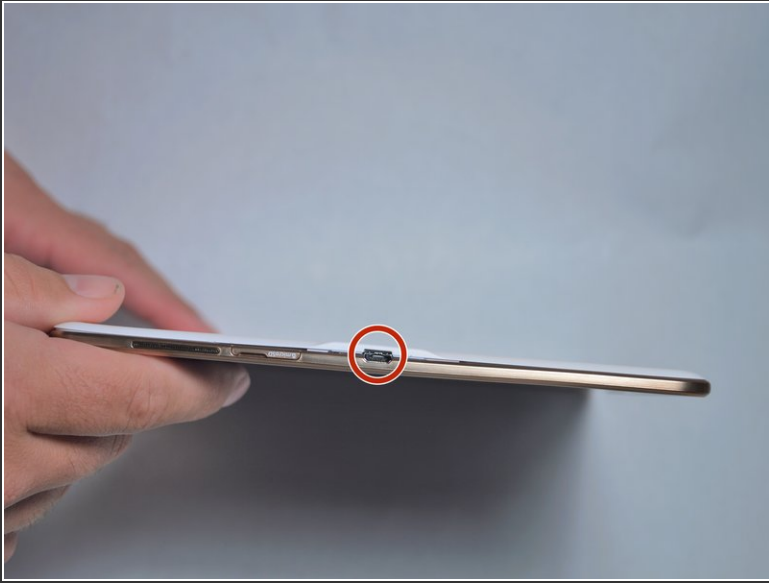
To one who has never done any sort of work with technology, replacing the motherboard can seem scary by the sound of it. This guide will walk you through how easy it actually is and how quickly it can be done! You'll feel like a professional IT worker at the end!



TOOLS:

- [Phillips #00 Screwdriver](#) (1)
 - [Phillips #1 Screwdriver](#) (1)
 - [iFixit Opening Tools](#) (1)
 - [Phillips #000 Screwdriver](#) (1)
 - [Spudger](#) (1)
 - [Metal Spudger](#) (1)
 - [Tweezers](#) (1)
 - [Heat Gun](#) (1)
-

Step 1 — Disassembling Galaxy Tab S 10.5 Back Cover



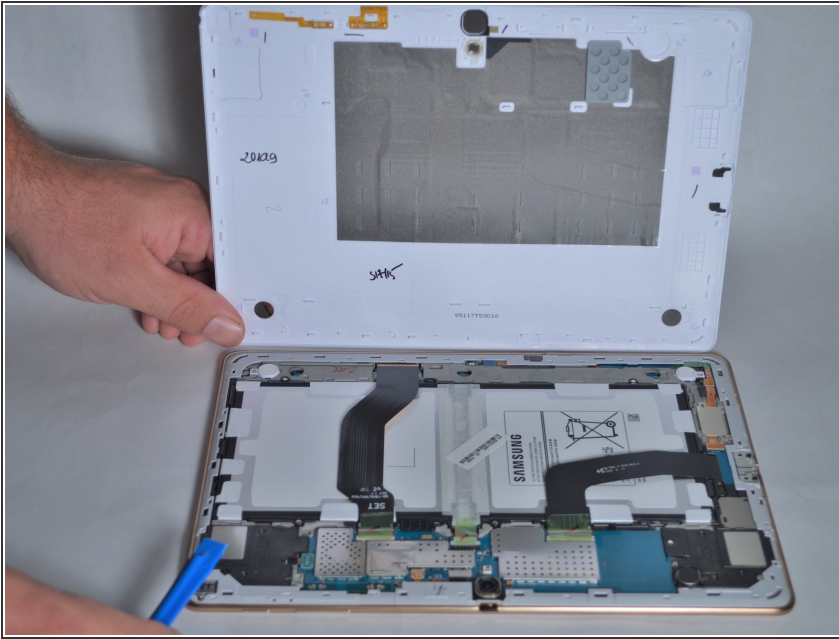
- Place the plastic opening tool into the SD card slot or charge port.
- Try in an upward motion until you see a separation between the tablet and back cover.

Step 2




- Work around the entire device by sliding the plastic opening tool around the rim.
- ⓘ If this is the first time, it will be hard to separate the back cover from the tablet.
- ⓘ The clips are approximately 5 cm apart. While working around the device, the clips will make a dislocating sound when disconnected.

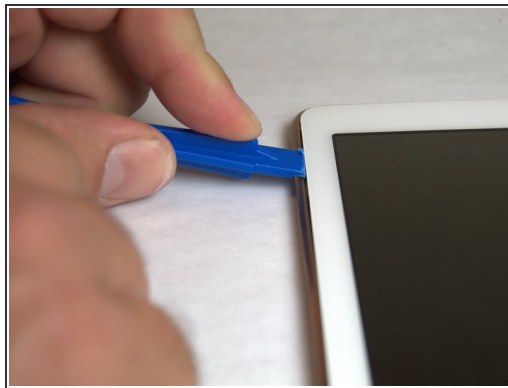
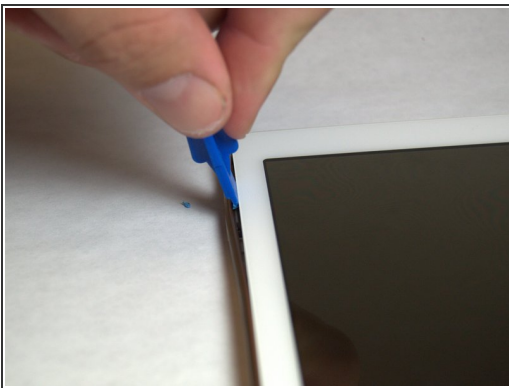
Step 3



- Remove the back cover once all links have been separated.

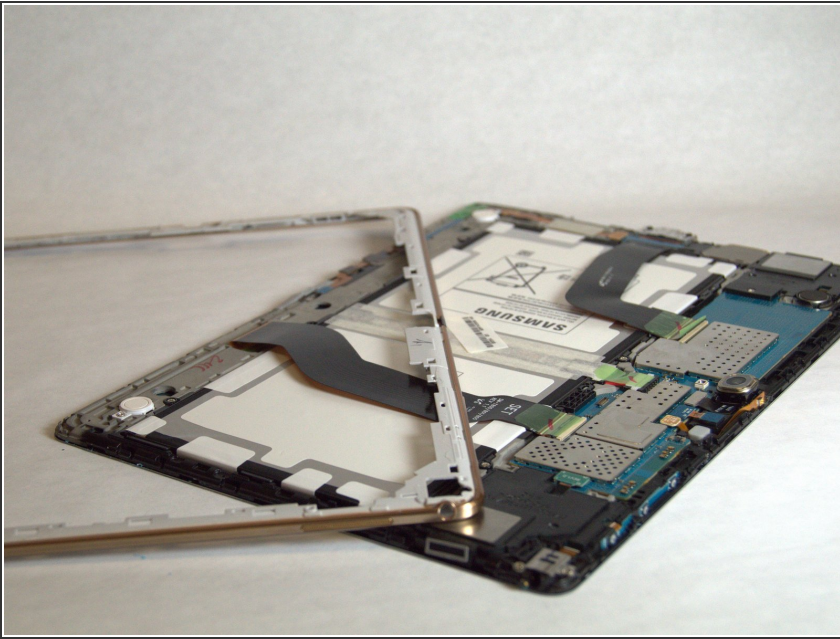
 Be careful when touching any of the internal components of the tablet.

Step 4 — Back Rim Cover



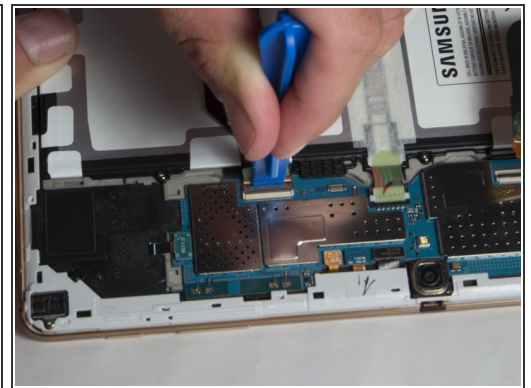
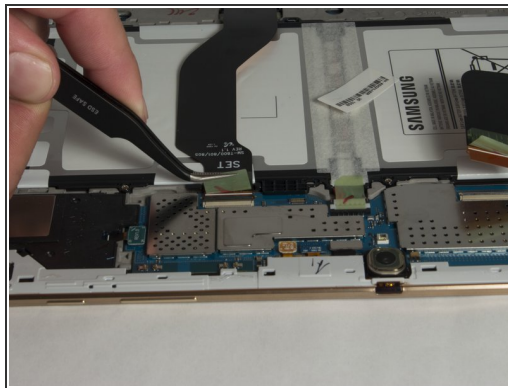
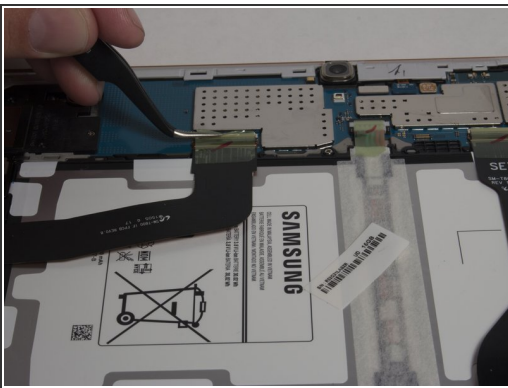
- Place the plastic opening tool in between the outer rim.
- Move the tool in a downward motion to separate the 2 parts.
- Run the tool along the rim to disconnect all connectors holding the outer rim to the back of the device.

Step 5



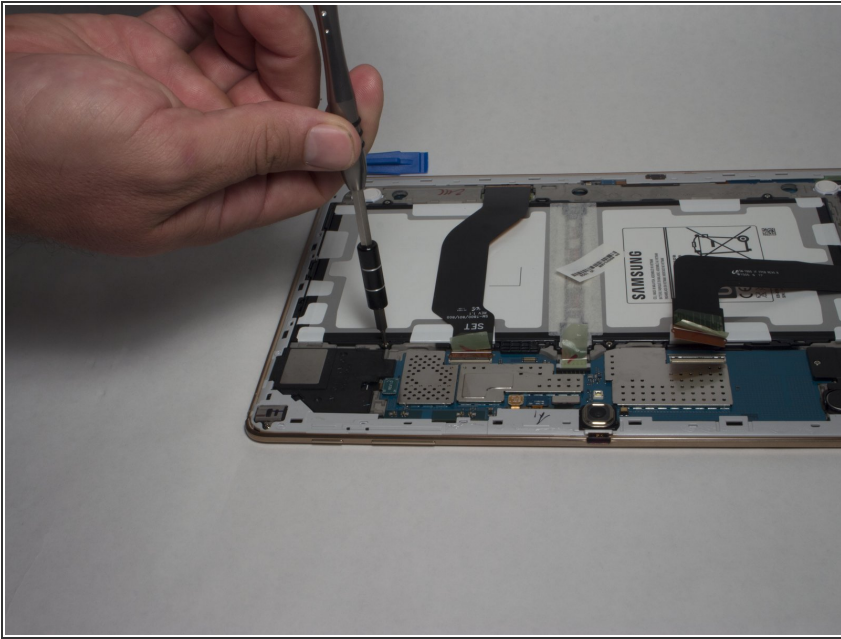
- Repeat this step for all four sides, then remove the rim.

Step 6 — Battery



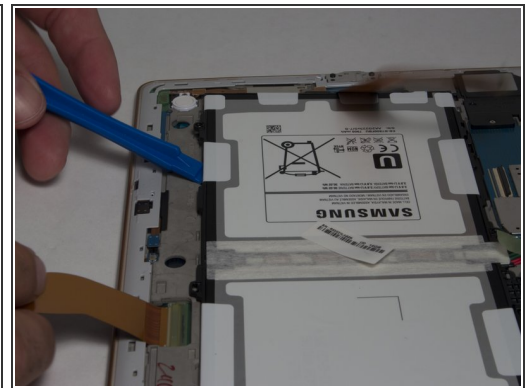
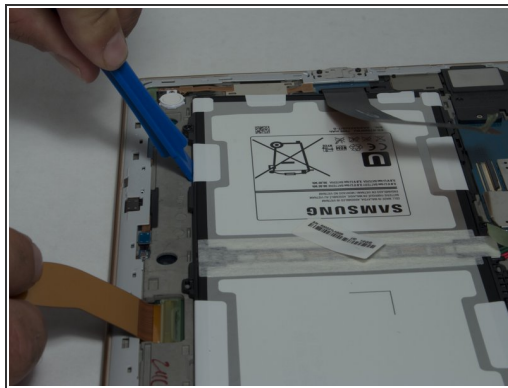
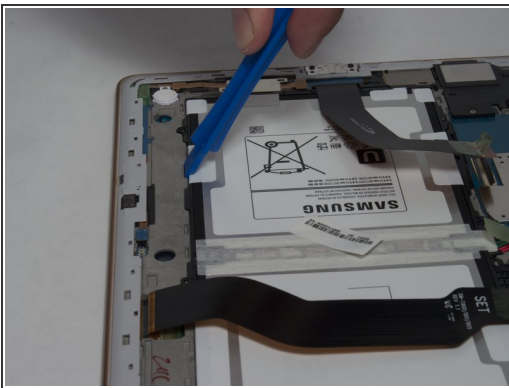
- Using tweezers, peel back the green tape from the ZIF connectors on the two black ribbon cables.
- Use a plastic opening tool to lift up the plastic clips on the ZIF connectors.

Step 7



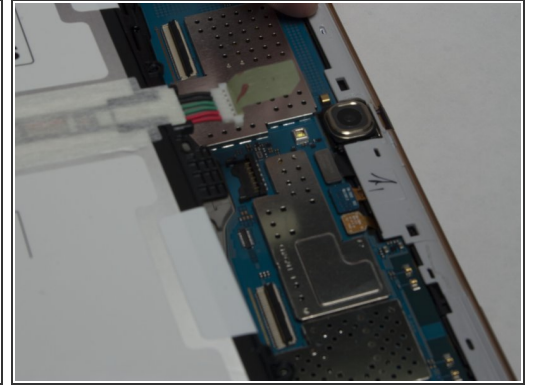
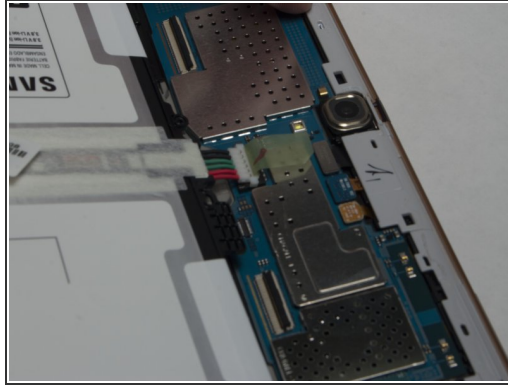
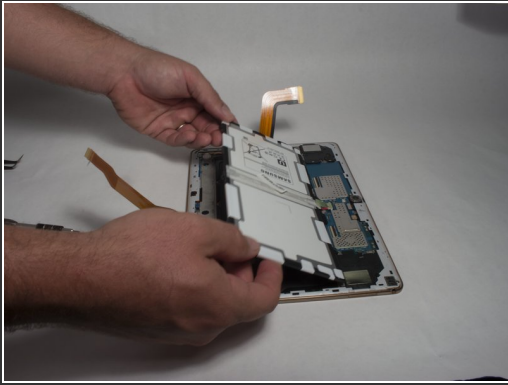
- Remove the six 2mm screws Phillips #000 screws surrounding the battery.

Step 8



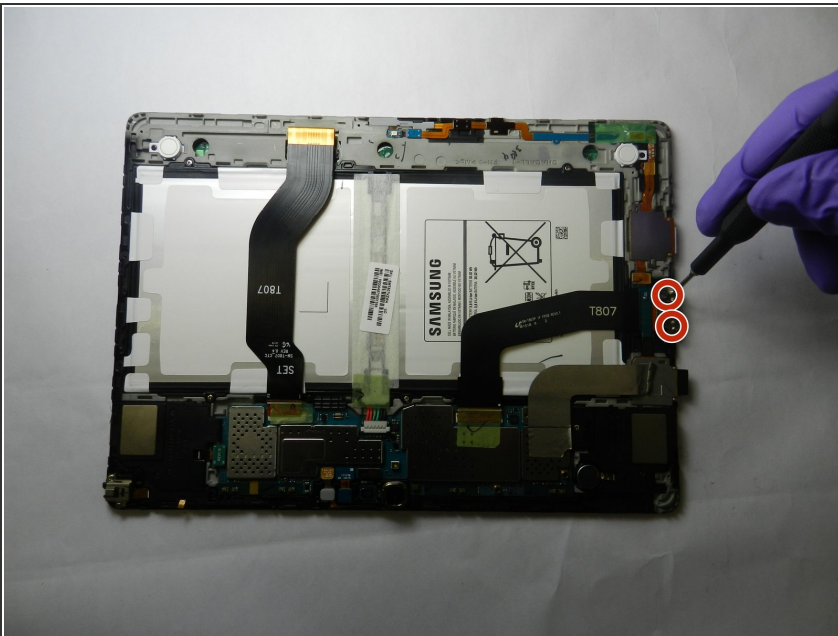
- Place the plastic opening tool between the frame and battery.
- Move the plastic opening tool in a downward motion, away from the battery to bring the battery out of the device.

Step 9



- Hold the battery and disconnect the plug to remove the battery.

Step 10 — Motherboard



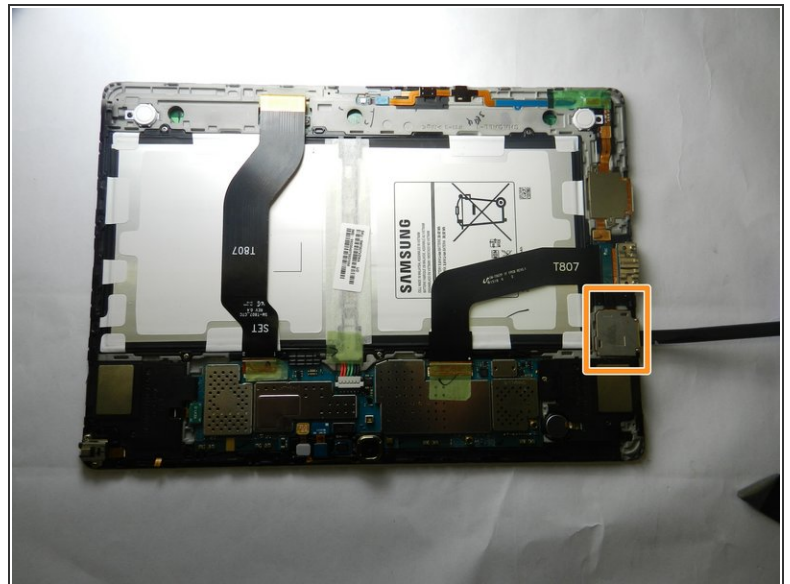
- Using a Phillips #000 screwdriver, remove two screws on the ribbon cable bracket.

Step 11



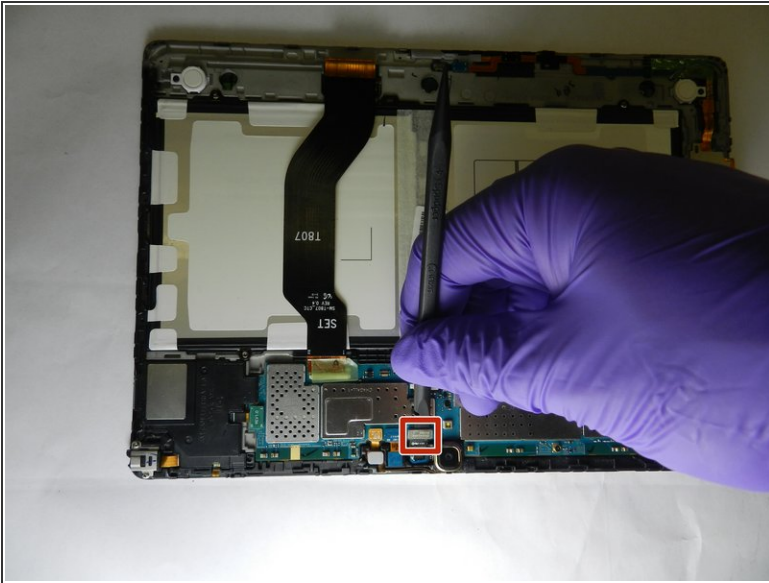
- Using a spudger, lift up the flex connector.

Step 12



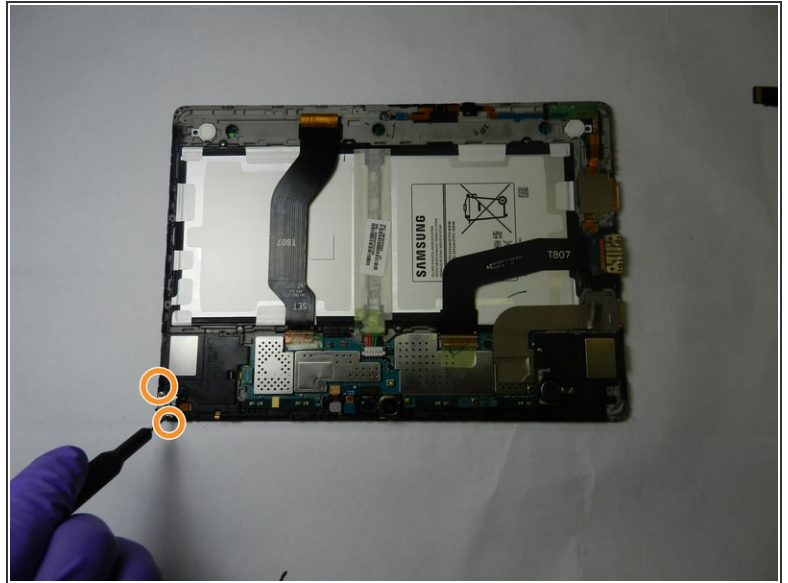
- Use a heat gun on the heat bracket and gently pry up the bracket.

Step 13



- Using a spudger, pry up front camera located near the front edge of the tablet.
- Remove the rear camera with spudger located directly next to the front camera.

Step 14



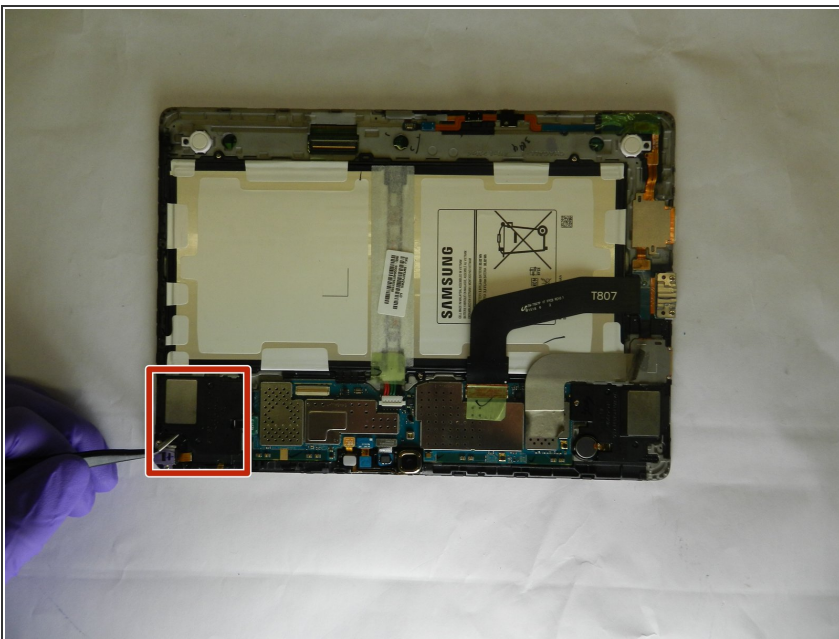
- Release the loud speaker connection on the left of the tablet from mother board with spudger by prying.
- Remove the 2 screws on the sides of the headphone jack with Phillips #000 screwdriver.

Step 15



- Lightly heat the loud speaker module on the front edge slightly from the side.
- Using a plastic opening pick, detach it and bend it upwards.

Step 16



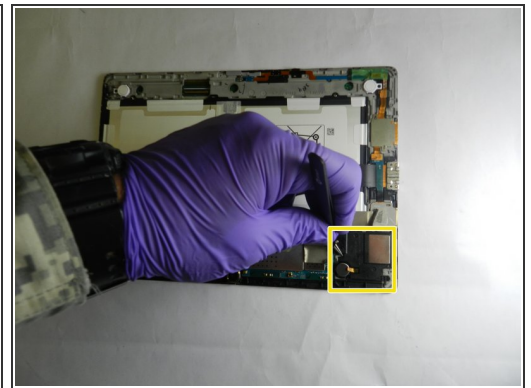
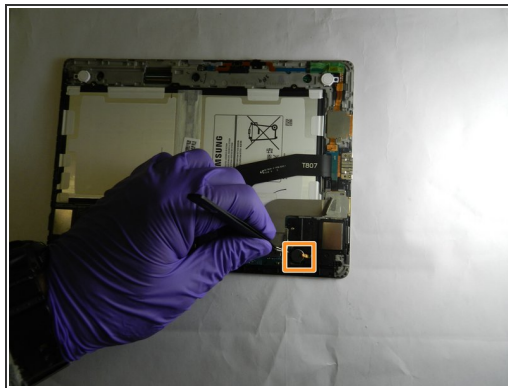
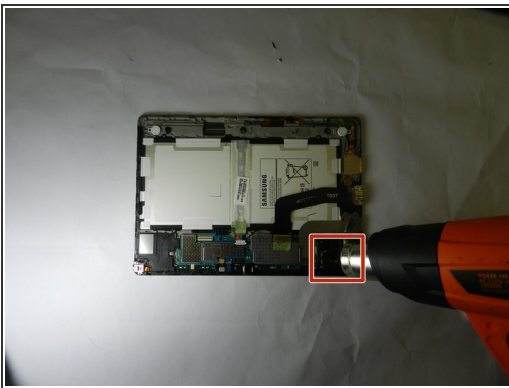
- Remove the left loud speaker by lightly prying with tweezers.

Step 17



- On the right loud speaker, remove 1 screw from the loud speaker module using Phillips #000 screwdriver.

Step 18



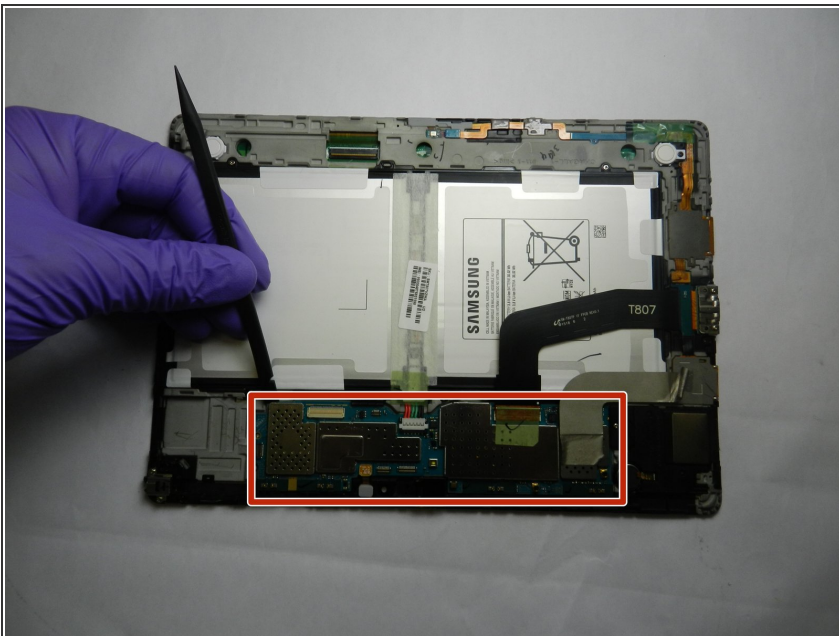
- Lightly use heat on right loud speaker module.
- Pry out the vibration motor with tweezers.
- Pry out whole loud speaker module with tweezers.

Step 19



- Release the connection of the light sensor, next to the front camera, by lifting up with a spudger.

Step 20



- Lift out the motherboard with a spudger.

To reassemble your device, follow these instructions in reverse order.