



Samsung Galaxy Tab S 10.5 Headphone Jack Replacement

This guide shows how to access the headphone jack to replace it in your Samsung Galaxy Tab S 10.5.

Written By: Ronald Dixon Flowers



This document was generated on 2020-11-28 08:00:10 AM (MST).

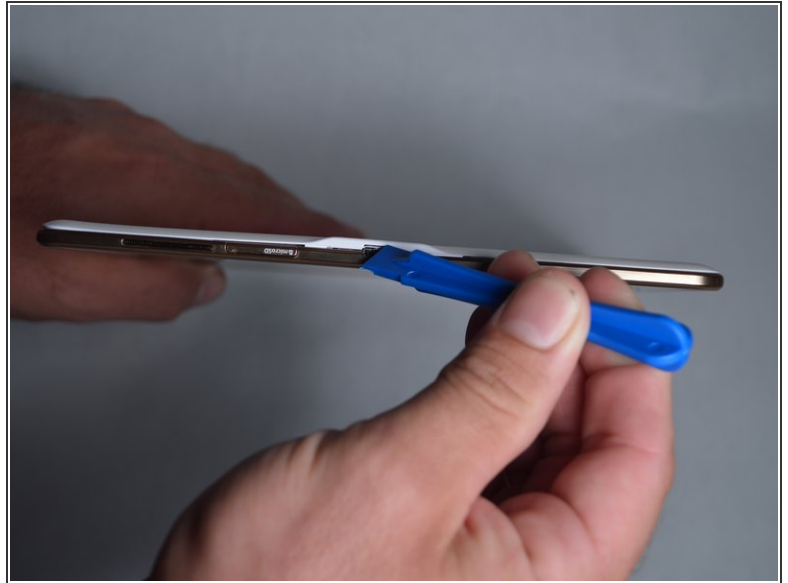
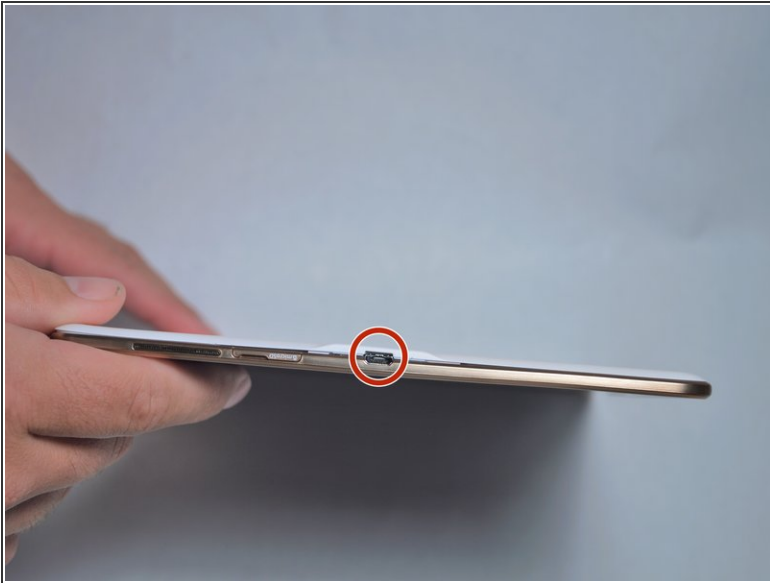
INTRODUCTION

If your headphones aren't properly working with your device, you may need to replace the headphone jack in it. Use this guide to replace the headphone jack in your tablet.

TOOLS:

- [iFixit Opening Tools](#) (1)
 - [Spudger](#) (1)
 - [Jimmy](#) (1)
 - [iFixit Opening Picks set of 6](#) (1)
 - [Phillips #00 Screwdriver](#) (1)
-

Step 1 — Disassembling Galaxy Tab S 10.5 Back Cover



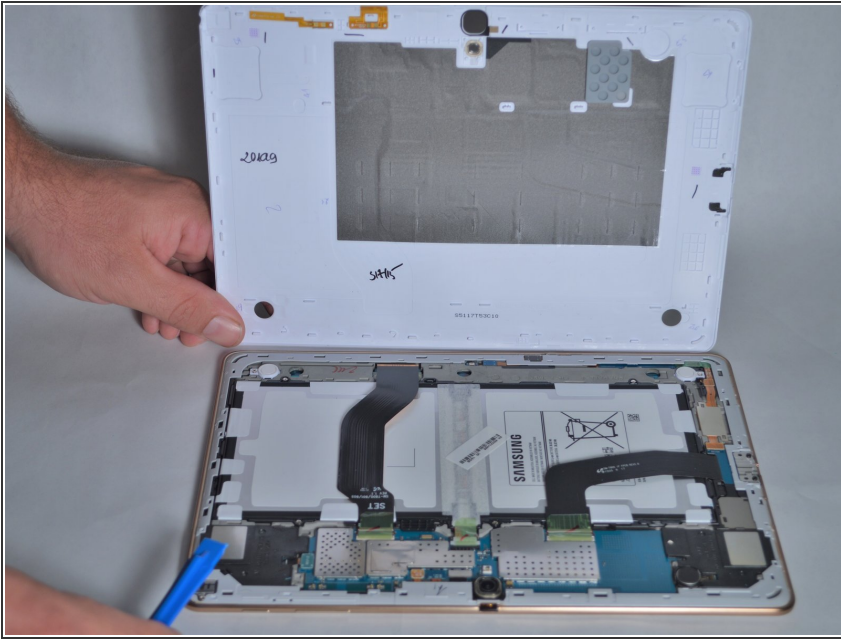
- Place the plastic opening tool into the SD card slot or charge port.
- Try in an upward motion until you see a separation between the tablet and back cover.

Step 2




- Work around the entire device by sliding the plastic opening tool around the rim.
- ⓘ If this is the first time, it will be hard to separate the back cover from the tablet.
- ⓘ The clips are approximately 5 cm apart. While working around the device, the clips will make a dislocating sound when disconnected.

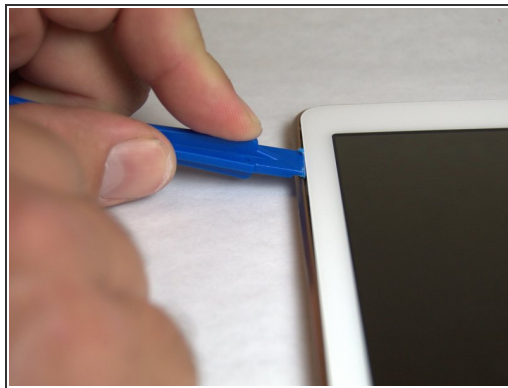
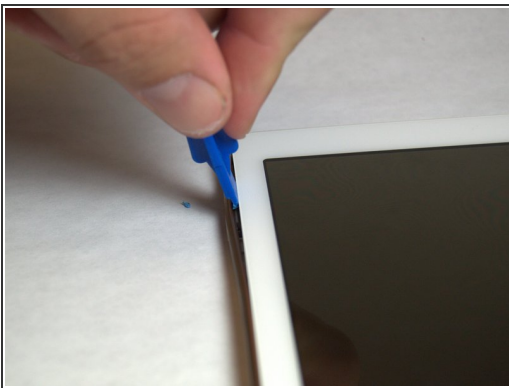
Step 3



- Remove the back cover once all links have been separated.

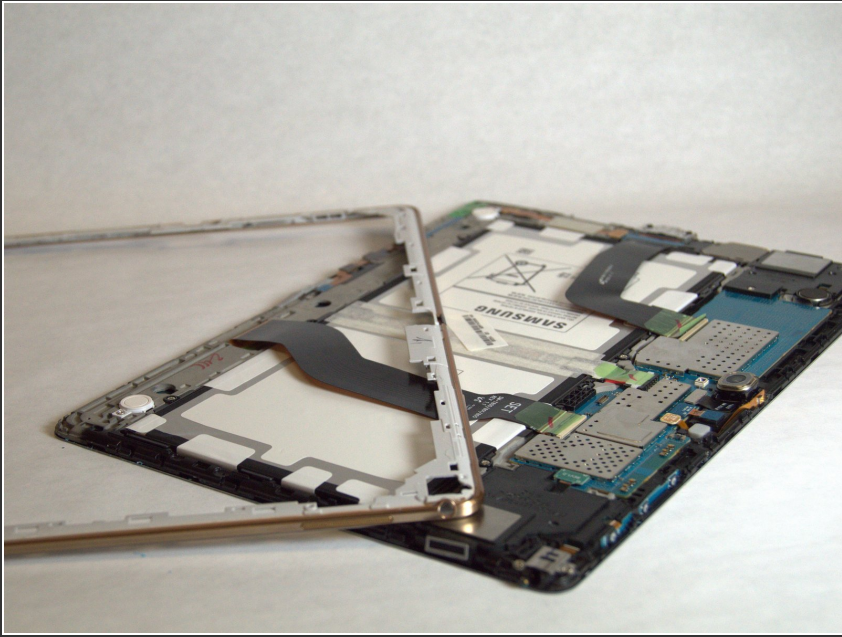
 Be careful when touching any of the internal components of the tablet.

Step 4 — Back Rim Cover



- Place the plastic opening tool in between the outer rim.
- Move the tool in a downward motion to separate the 2 parts.
- Run the tool along the rim to disconnect all connectors holding the outer rim to the back of the device.

Step 5



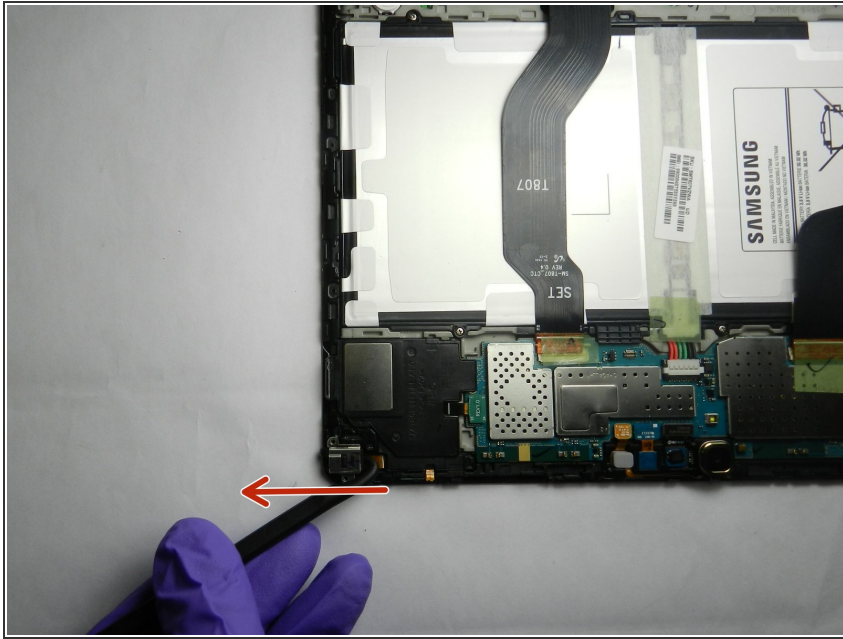
- Repeat this step for all four sides, then remove the rim.

Step 6 — Headphone Jack



- Using the Phillips #00 screwdriver, remove the two screws holding the headphone jack.

Step 7



- Place the hook of a spudger on the backside of headphone jack and pop the headphone jack out.

To reassemble your device, follow these instructions in reverse order.