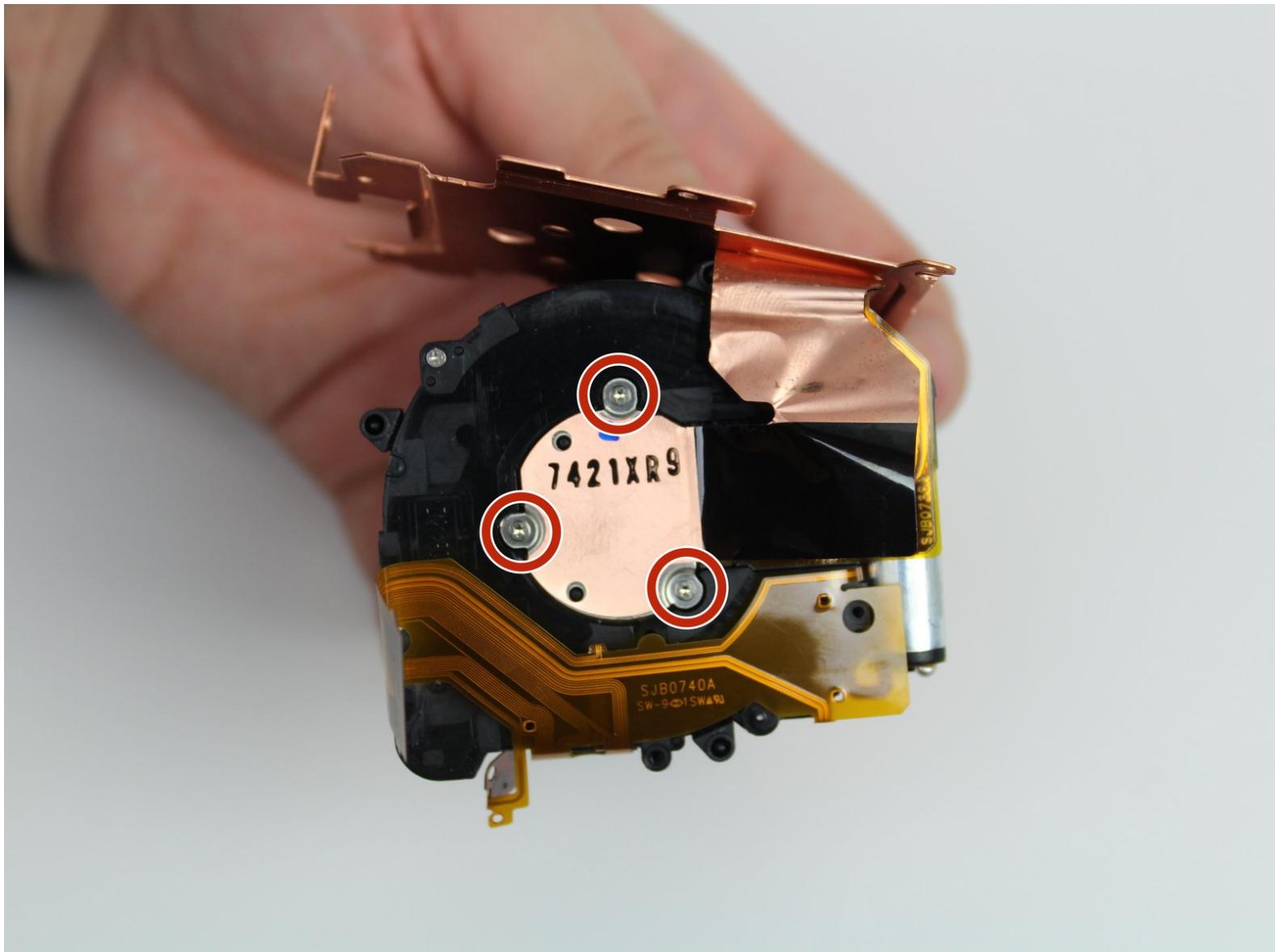




Panasonic Lumix DMC-ZS60 Camera Sensor Replacement

This guide will explain how to replace the camera sensor in the Panasonic Lumix DMC-ZS60.

Written By: Audrey Arnold



INTRODUCTION

If your Panasonic Lumix DMC-ZS60 is experiencing camera sensor troubles. If your photos are showing with spots or if the pictures are not showing up clear, you may need to replace your sensor. Follow this guide in order to replace your camera sensor.

A functional camera sensor provides the user flawless pictures and shows the best resolution a taken picture. A camera sensor could become nonfunctional due to age or mistreatment.

Make sure to power off your camera and take off the charger before trying to replace your camera sensor.



TOOLS:

- [Phillips #0 Screwdriver](#) (1)
 - [Soldering Iron](#) (1)
 - [Phillips #000 Screwdriver](#) (1)
 - [T2 Torx Screwdriver](#) (1)
 - [Tweezers](#) (1)
-

Step 1 — Battery



- Use your finger to slide the black latch from the locked position to the open position on the memory card/battery door. This will open the door of the camera.

Step 2



- Push up the black tab on the right-hand-side to spring release the battery.

Step 3



- Remove the battery by sliding it out from the camera.

Step 4 — LCD Screen



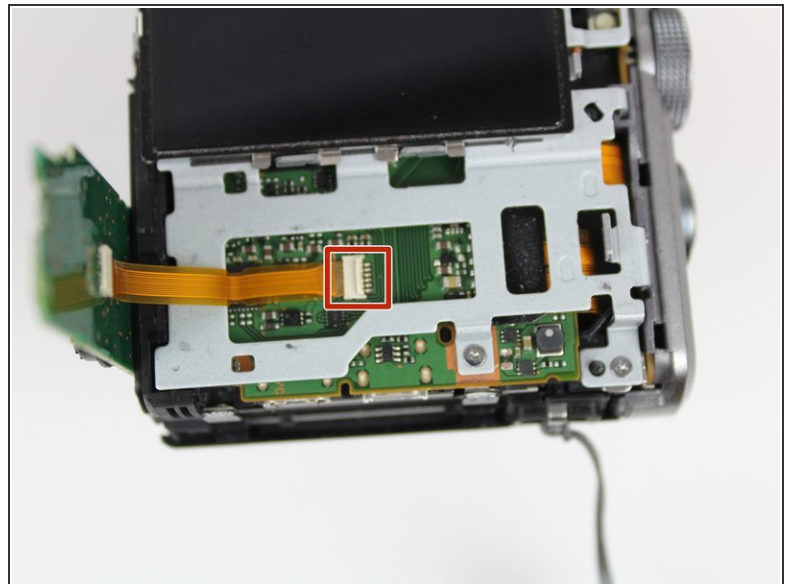
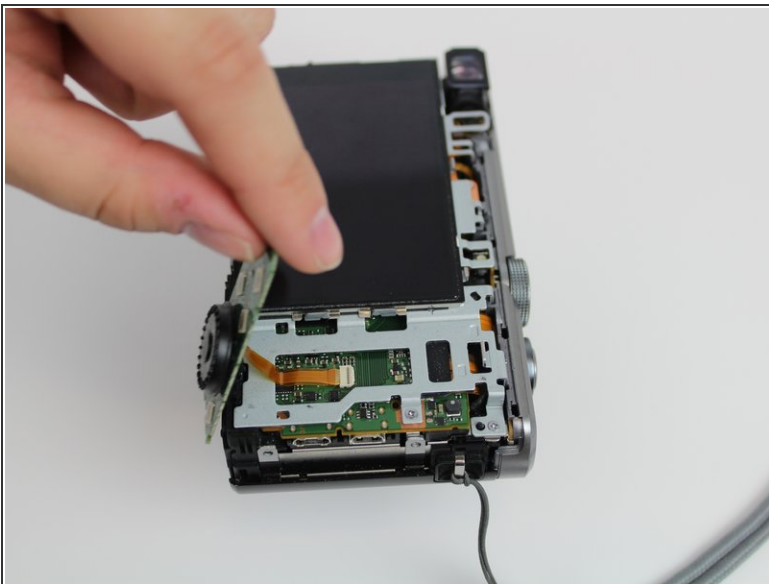
- Using the Phillips #000 Screwdriver, unscrew six 3mm screws. There are two screws located on three sides excluding the top.

Step 5



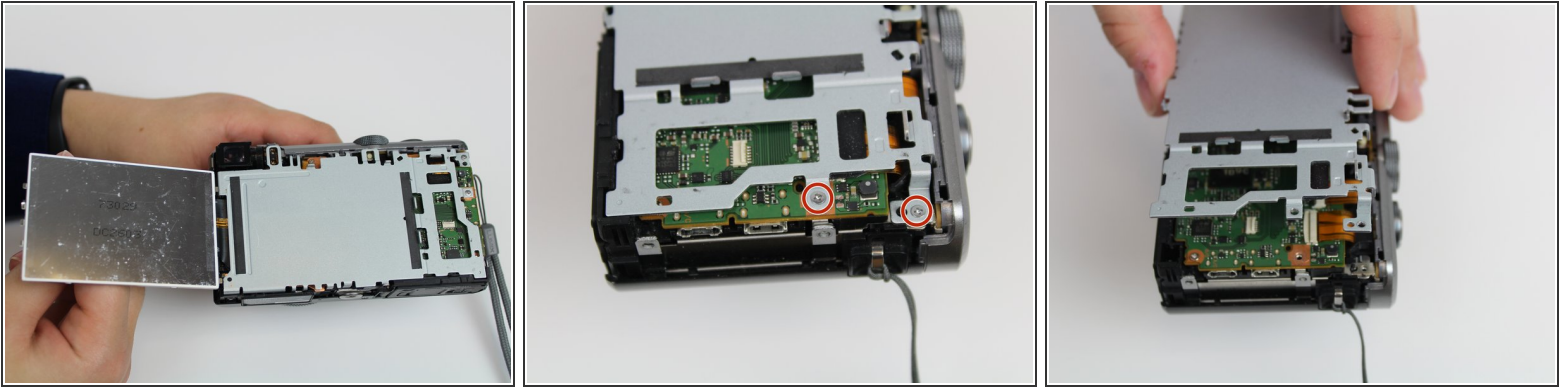
- Pry off back casing and set aside.

Step 6



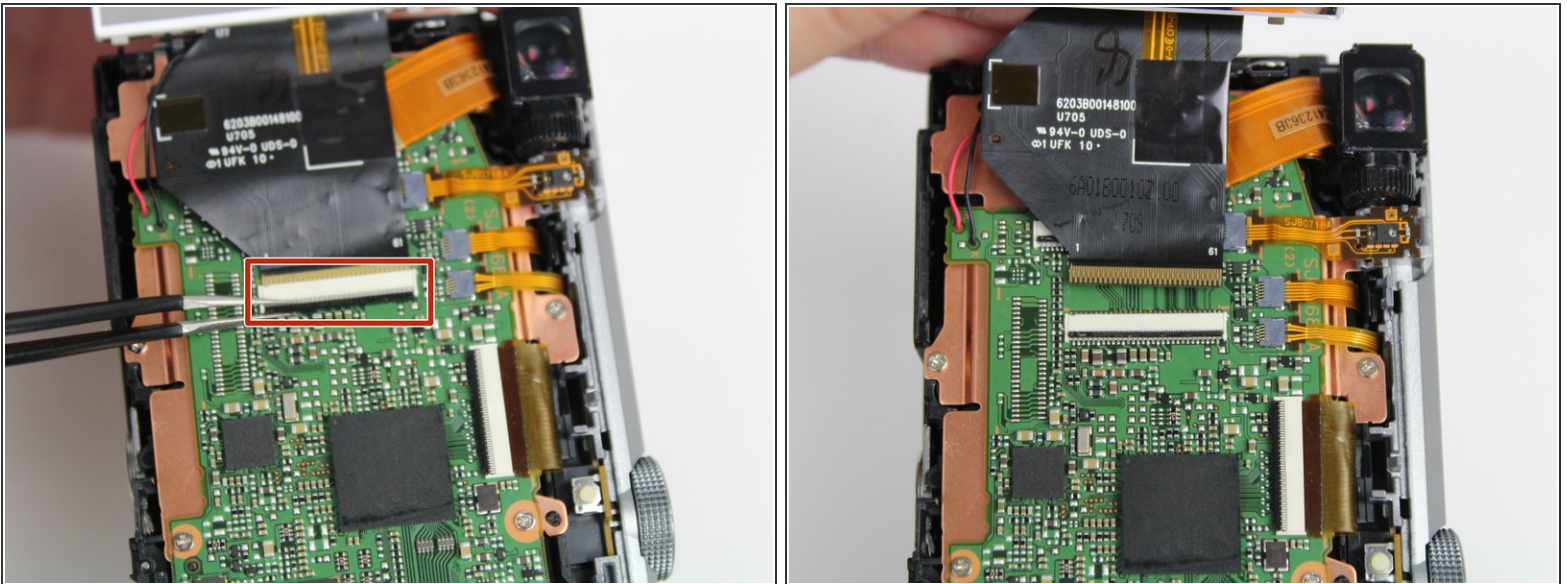
- Pull the right side control dial circuit board up.
- Use tweezers to pry up the white retaining flap and gently pull the circuit board out.

Step 7



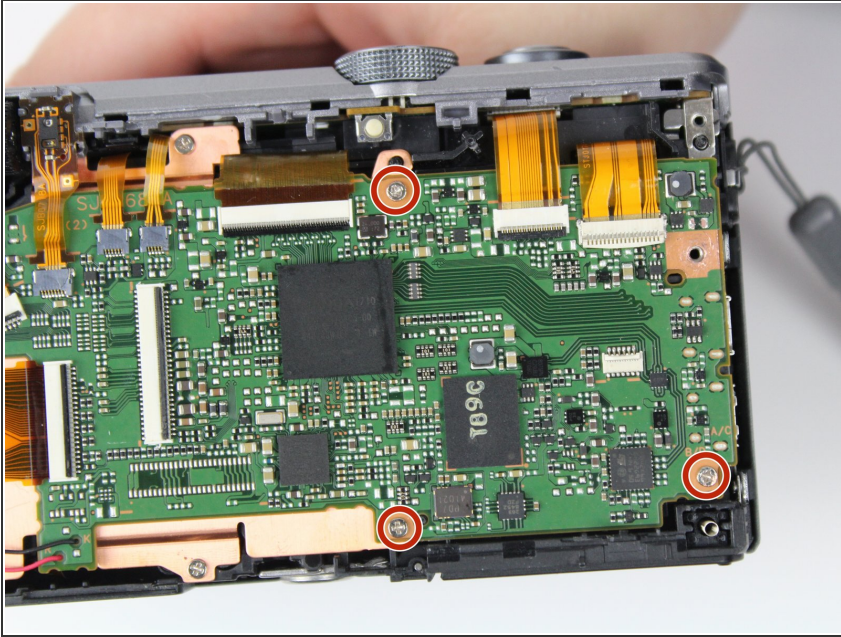
- Flip the LCD screen to the left.
- Unscrew the two 3mm on the top right side using the Phillips #000 Screwdriver.
- Lift the gray plate cover off.

Step 8



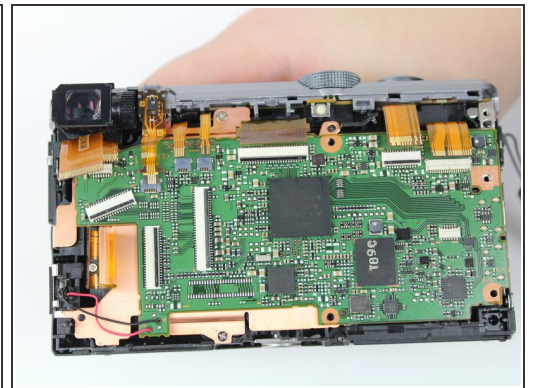
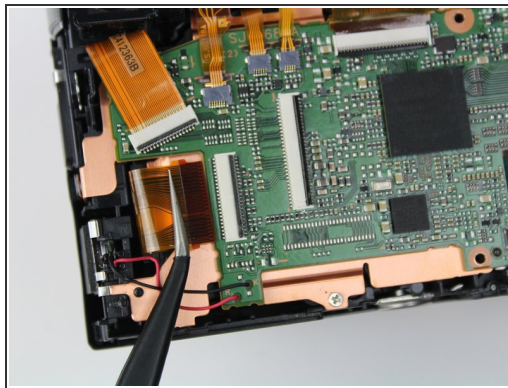
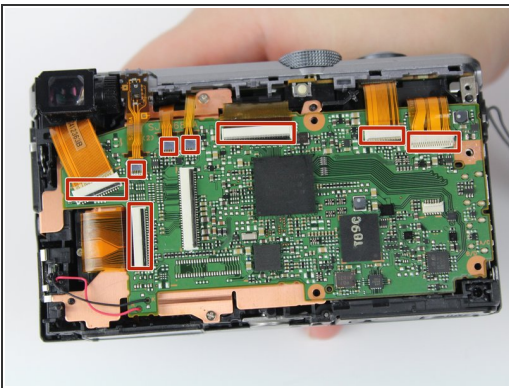
- Use tweezers to pry up the black retaining flat and gently pull to free the LCD screen from the device.

Step 9 — Motherboard



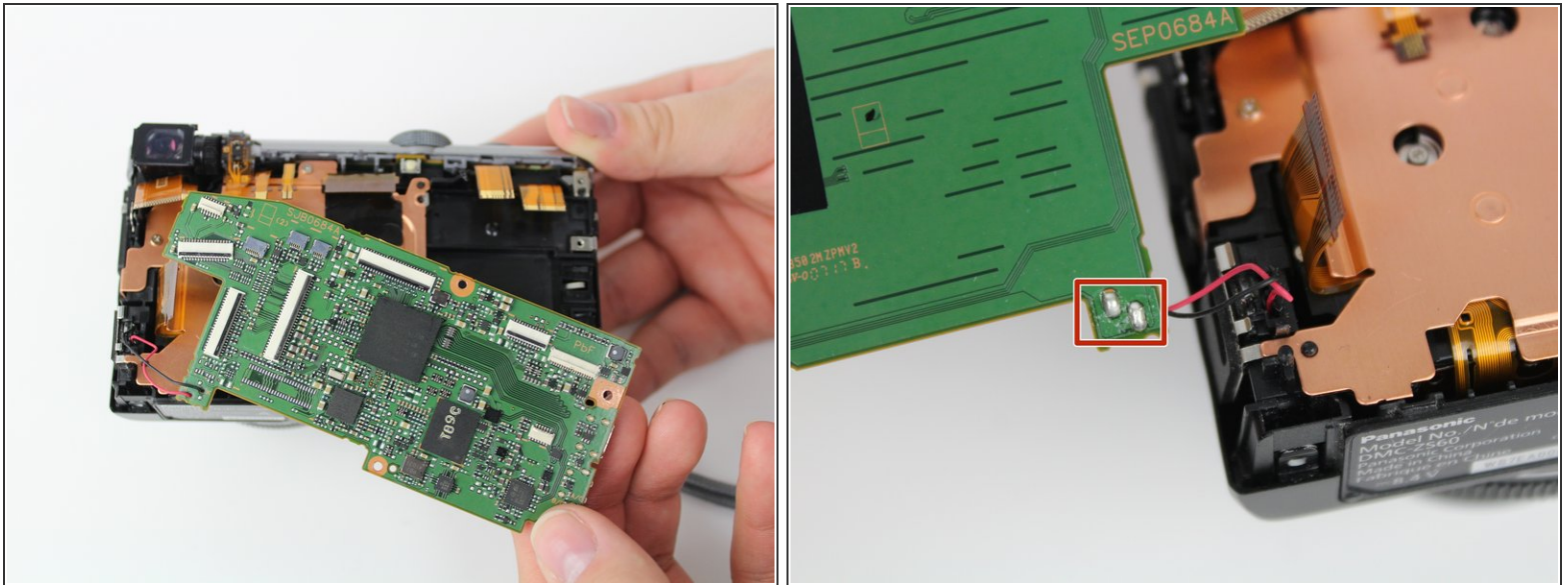
- Remove these three 3 mm screws with a Phillips #000 screwdriver.

Step 10



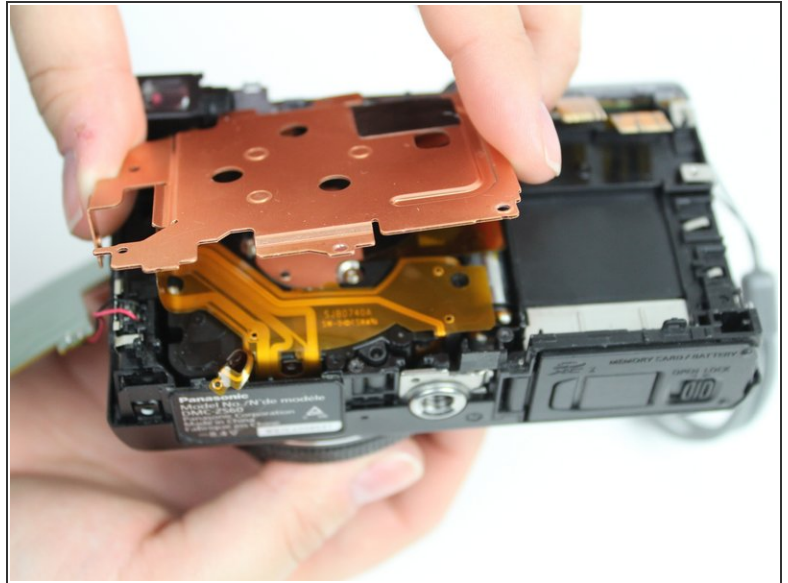
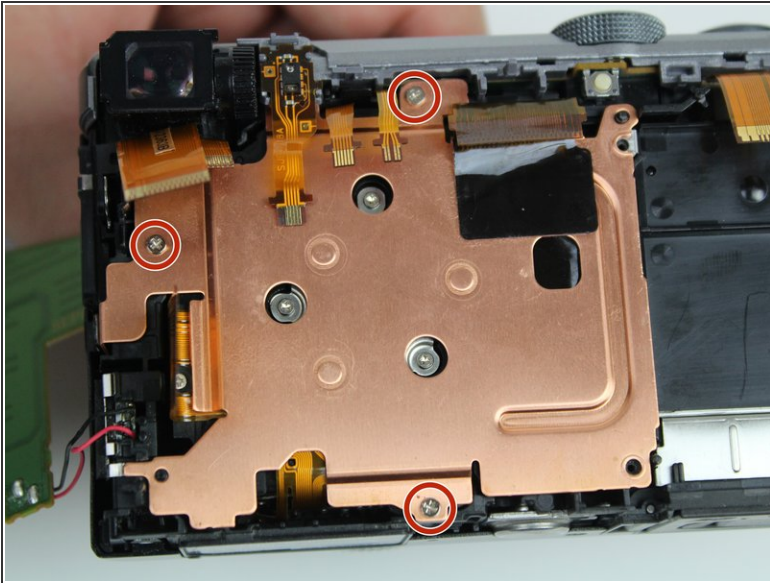
- Disconnect these 9 ribbon cables from the motherboard. One ribbon cable is hidden underneath the larger one on the left.
- Use tweezers to first lift up the retaining flaps for each connector, then pull out the ribbon cable.

Step 11



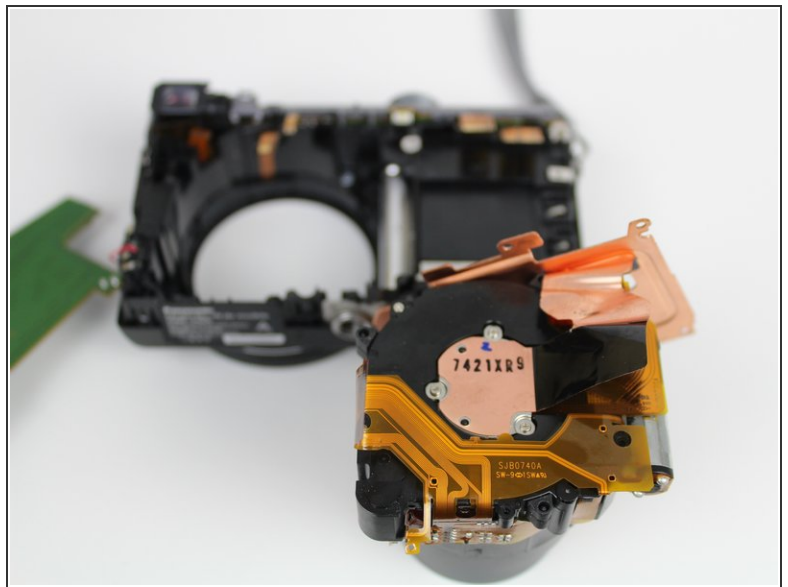
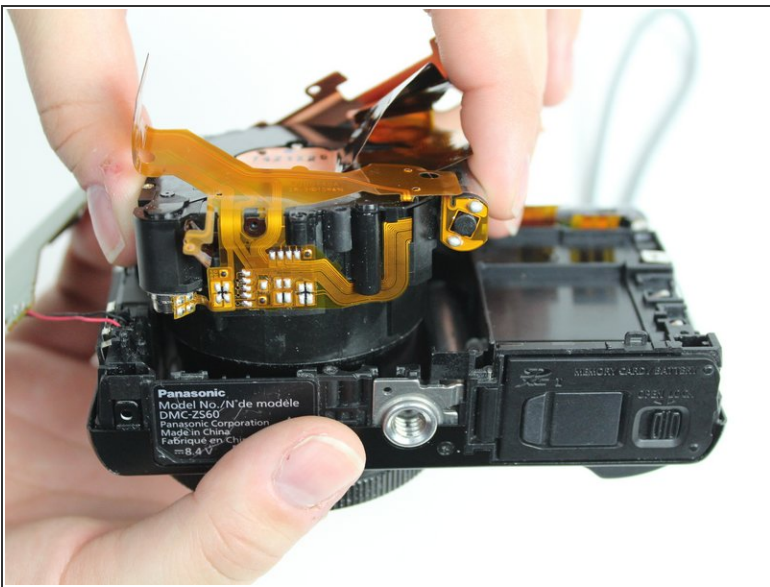
- Now you will be able to lift the motherboard up and it will only be connected by two cables.
 - To fully remove the motherboard, you will have to solder the metal in order to remove the wires.
- i** For more information on soldering, please visit the [How to Solder and Desolder Connections](#) guide.

Step 12 — Camera Lens



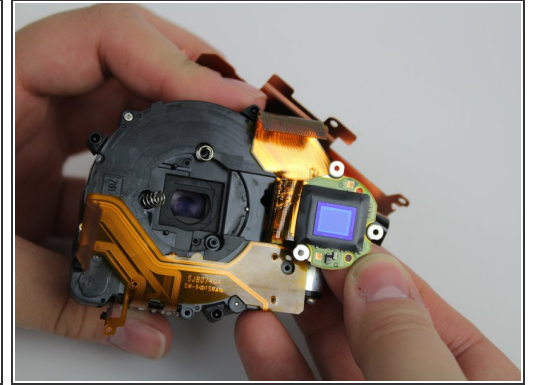
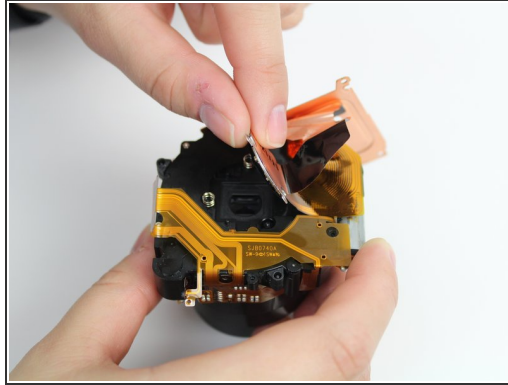
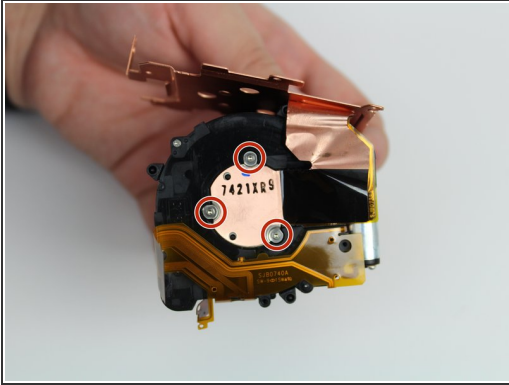
- Unscrew the three 3mm screws attached to the plate cover using a Phillips #000 Screwdriver.
- Pull off the plate cover to uncover the camera lens.

Step 13



- Lift the camera lens from the camera.

Step 14 — Camera Sensor



- Unscrew three screws using the T2 Torx Screwdriver.
- Remove the camera sensor.

To reassemble your device, follow these instructions in reverse order.