



Sony BDP-S3500 Disk Drive Replacement

How to replace the disk drive in the Sony BDP-S3500

Written By: V W



INTRODUCTION

You can use this guide to replace the disk drive in the Sony BDP S3500. It is a fairly easy process and won't require many tools or a lot of prior experience.

Be sure to review the [troubleshooting guide](#), as most of the time the problems are due to malfunctioning software rather than it being a hardware issue.

This guide will show you how to safely disassemble the device by removing the required parts and connections so that the disk drive can be replaced without damaging any of the other components.



TOOLS:

- [Phillips #2 Screwdriver](#) (1)
-

Step 1 — Front Panel



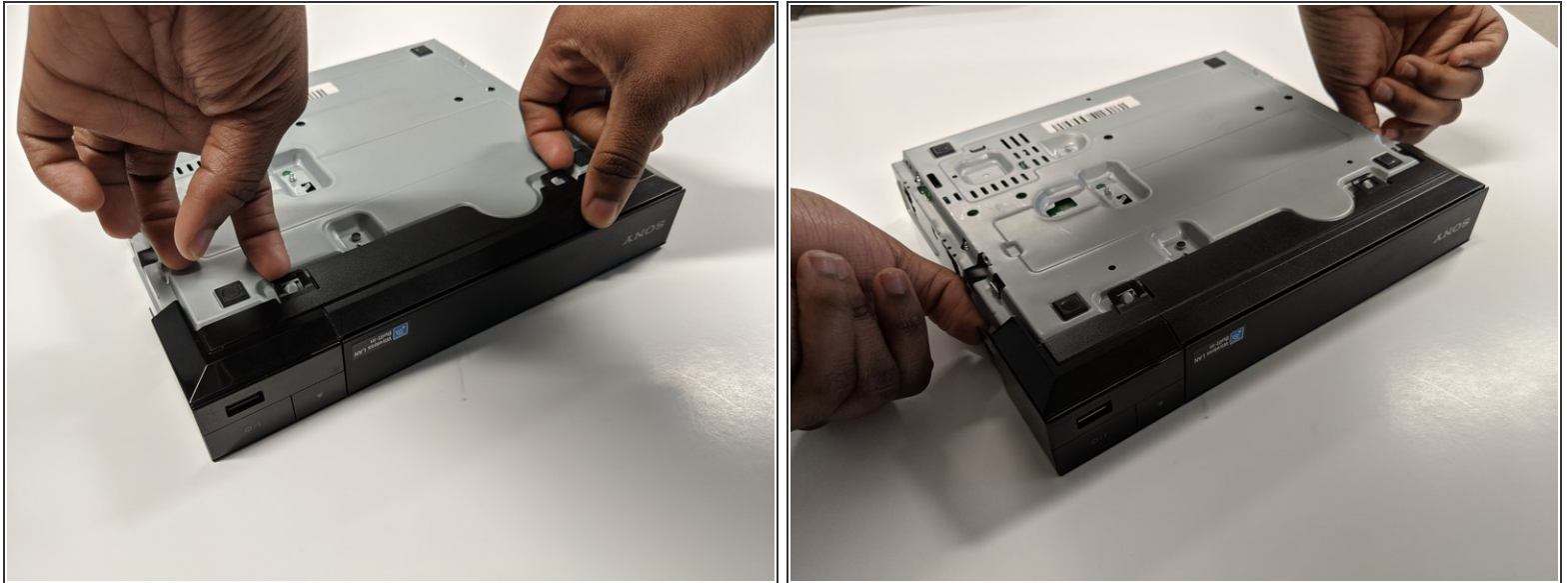
- Use the Phillips #2 screwdriver to remove the two 9mm screws located on the back of the device.

Step 2



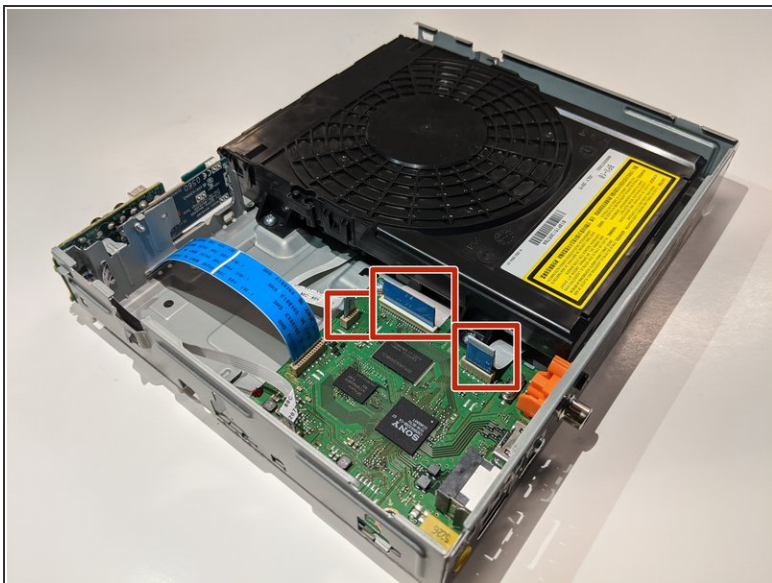
- Slide the top panel off towards the back of the device.
- Remove the top panel.

Step 3



- Unclip the plastic tags from the bottom of the device.
- Unclip the plastic tags from the sides of the device.
- Slide the front panel off.

Step 4 — Disk Drive



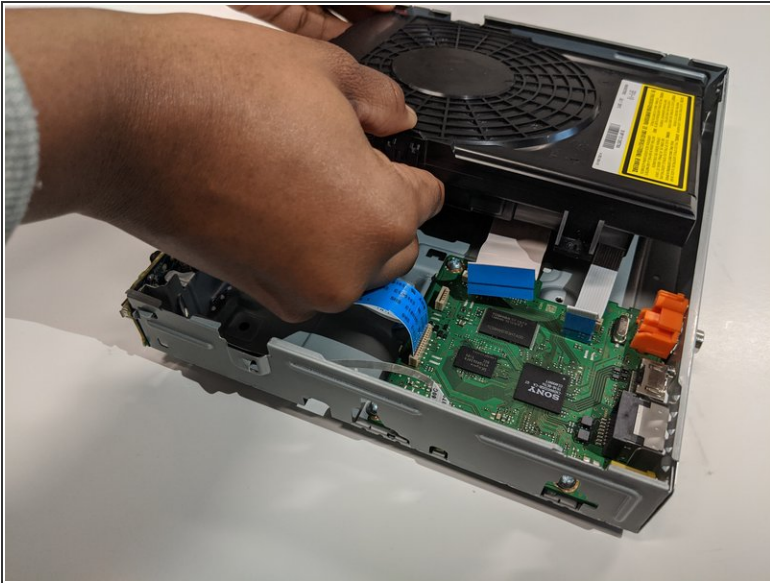
- Remove the three ribbon cables by gently pulling the cables out of each connector.
- ⚠ Be sure to only handle the circuit board from the edges so that the PCB is not damaged.

Step 5



- Use a Phillips #2 screwdriver to remove the two 9mm screws that are holding the disk drive in place.

Step 6



- Carefully lift and slide the disk drive out of the casing.

To reassemble your device, follow these instructions in reverse order.