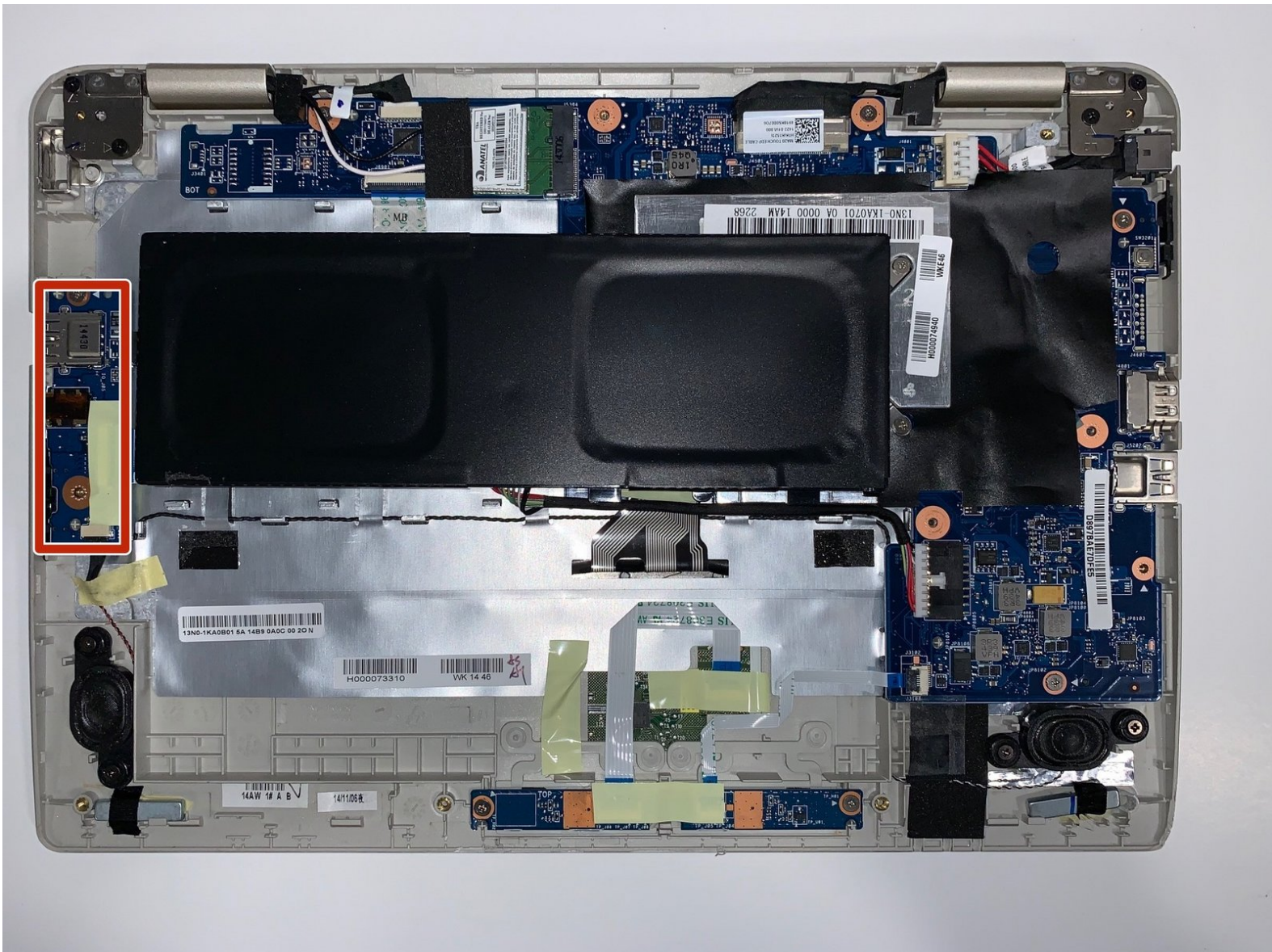




Toshiba Satellite L15W-B1303 USB Port Replacement

Use this guide to replace a faulty or damaged USB port in your Toshiba Satellite L15W-B1303 laptop.

Written By: Justin Caruso



This document was generated on 2020-11-28 08:01:59 AM (MST).

INTRODUCTION

The USB (Universal Serial Bus) port is a piece of hardware within your computer commonly used to interface with external devices such as mice, headsets and storage devices. Damage to these ports can cause them to have an unreliable connection to your devices which can cause a whole host of issues depending on the external device. Without these ports, your laptop would only be able to use the built in track-pad and keyboard leaving you without an external mouse or expandable storage, hindering your experience.

Before attempting a replacement ensure you have consulted the [troubleshooting page](#) to ensure your problem requires the replacement of the ports.

The Toshiba Satellite L15W-B1303 laptop comes with the now outdated standard USB 2.0. If you wish to have a faster connection to make better use of supported external storage devices, you may wish to consider finding a USB adapter supporting the newer standard of USB 3.0 or above.

Before opening your device, ensure you have removed any external power sources from the device to avoid damage to your device or yourself.

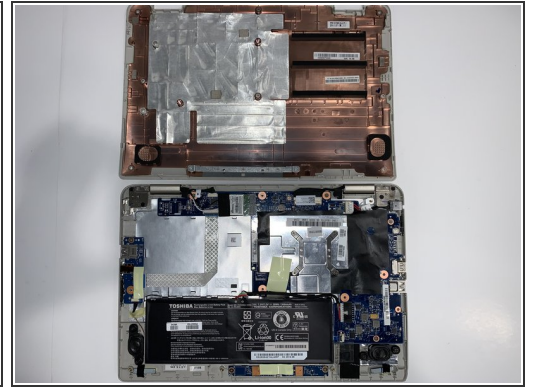
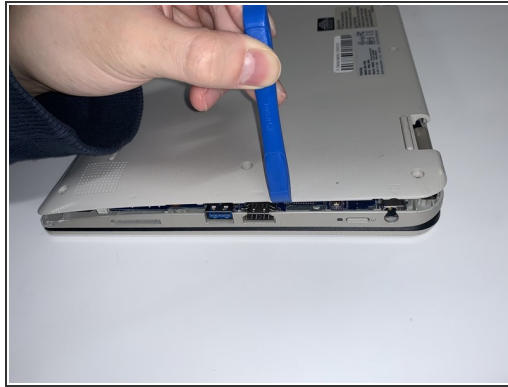
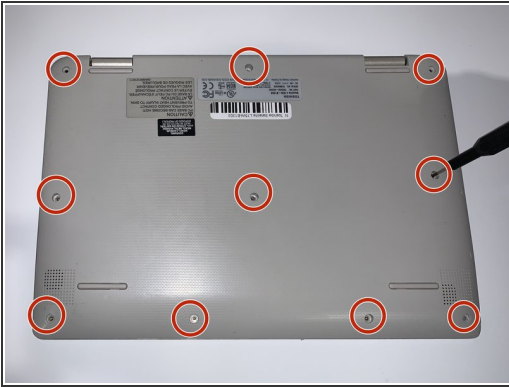
Be sure to back up your hard drive before replacing it so you don't lose any data while you're doing the replacement. Make sure to power off your laptop completely and disconnect from any external power source prior to beginning the process.



TOOLS:

- [J00 JIS Screwdriver](#) (1)
 - [iFixit Opening Tools](#) (1)
 - [Spudger](#) (1)
-

Step 1 — Bottom Panel



- Turn the laptop over and place it on its top side.
- Remove ten 10mm JIS #00 screws from the bottom panel of the laptop.
- Using the iFixit opening tool, remove the bottom panel of the laptop.

Step 2 — USB Port



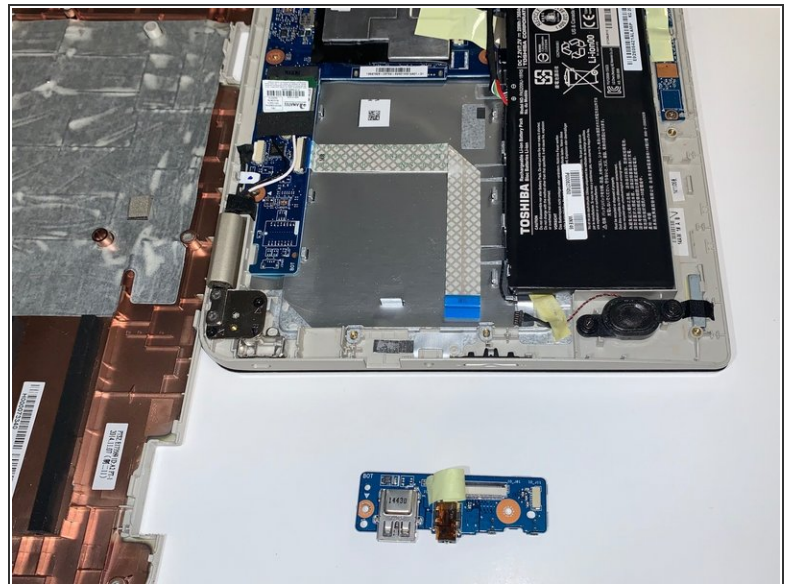
- Disconnect the cable that connects the receiver to the laptop using the pointed end of a spudger.

Step 3



- Remove the single JIS #00 screw.

Step 4



- Peel back the material covering this wire.

⚠ Gently pull the board out carefully to avoid damaging the connector.

To reassemble your device, follow these instructions in reverse order.