



# Mitsubishi Electric DD-6040 Power Button Replacement

With minimal handywork, you can replace the...

Written By: Usha Alexis



# INTRODUCTION

With minimal handywork, you can replace the power button of your Mitsubishi Electric DD-6040 DVD player. While finding a replacement part may be difficult, physically replacing the part is an easy task, requiring only a screwdriver and some disassembly.

Sometimes, the problem is as simple as a button no longer working. Note: Be very careful handling an electronic device, and make sure that the device is unplugged before working on it.

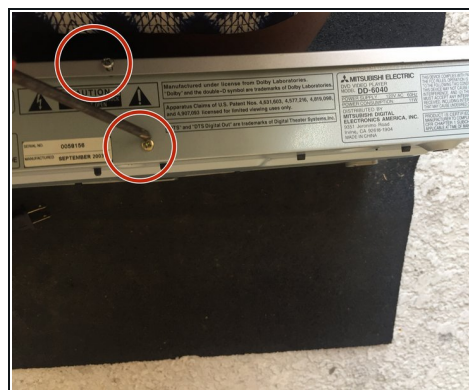
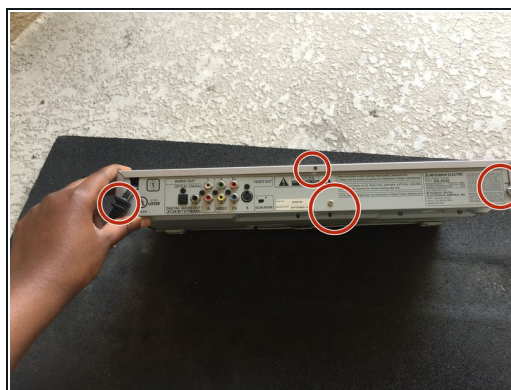
## TOOLS:

Phillips #1 Screwdriver (1)

## PARTS:

Mistubishi Electric DVD player Model DD-6040 Power button (1)

## Step 1 — Power Button



 Unplug your DVD player prior to working on the device.

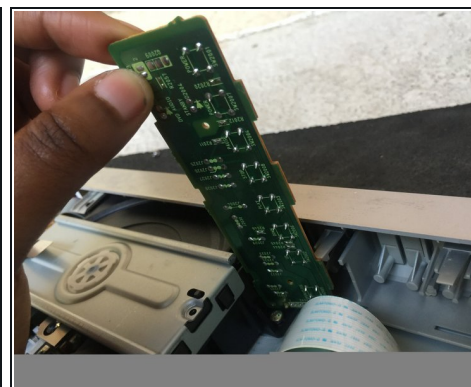
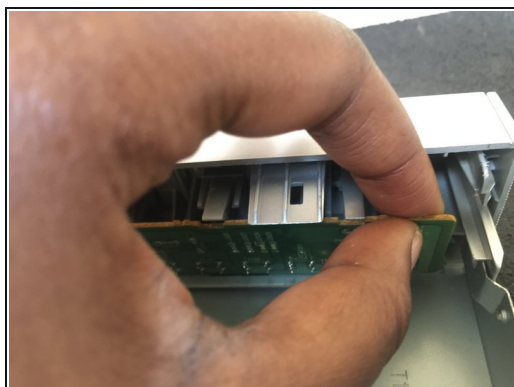
- Remove five 1.2 mm Phillips #1 screws to disassemble the DVD player.

## Step 2



- Once the screws are removed, slide back and remove the cover.

## Step 3



- Gently pull out the green circuit board.

⚠ Be very careful, as circuit boards can be quite fragile.

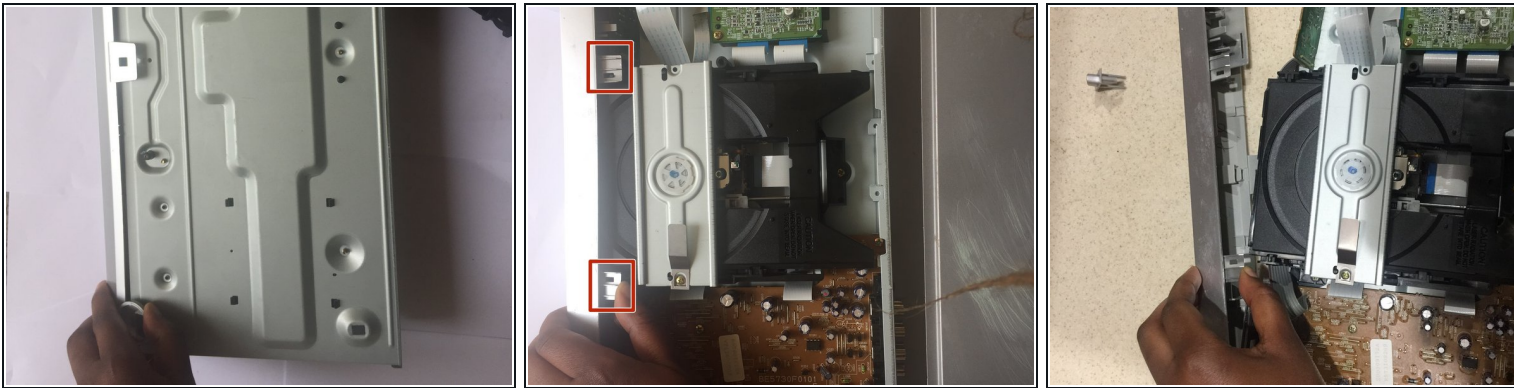


## Step 4



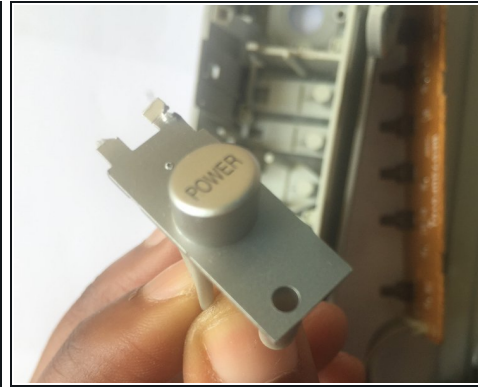
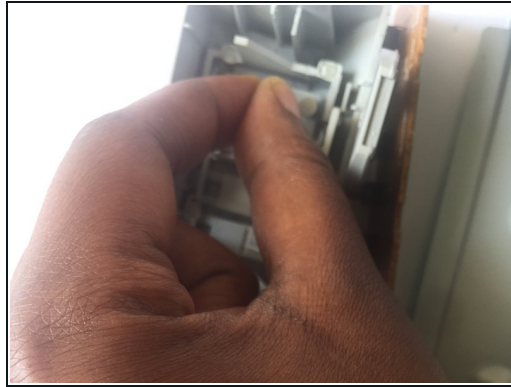
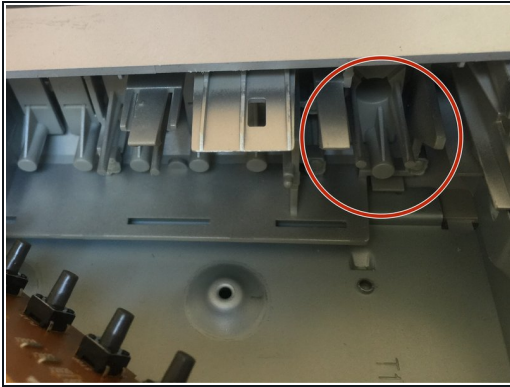
- Flip the DVD player over and pull up on the clip.

## Step 5



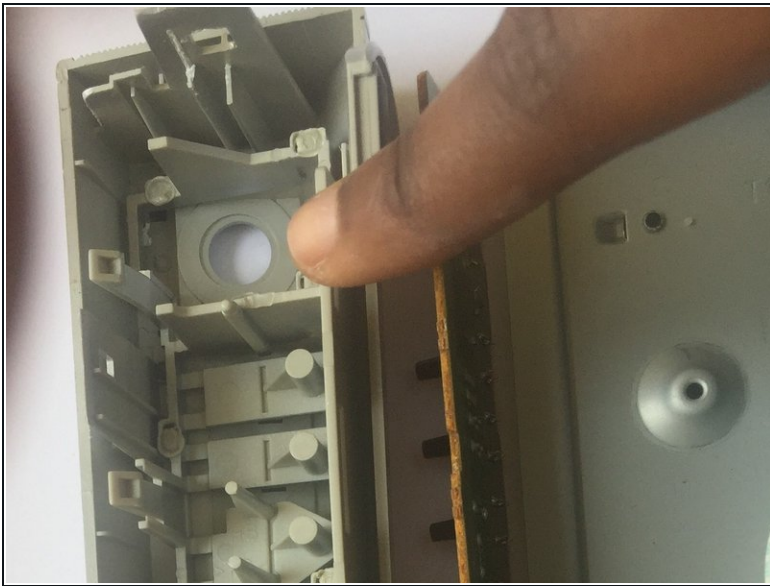
- Once the clip is unlatched disconnect the corner tabs.
- Reorient and unlatch the tabs inside the device.
- Remove the faceplate.

## Step 6



- Pull on the old power button to remove it.

## Step 7



- Adjust and push the new button into place.

To reassemble your device, follow these steps in reverse order.