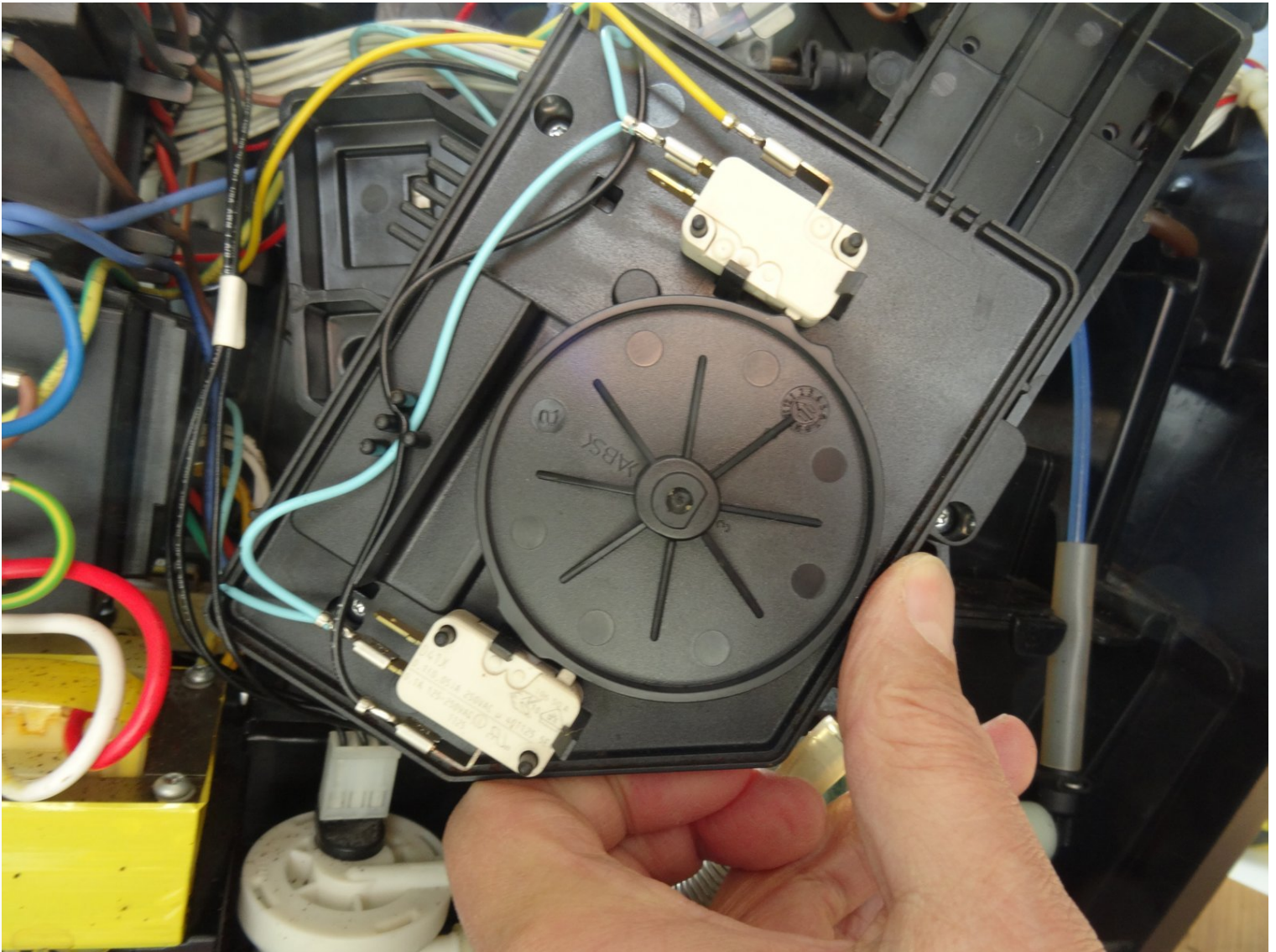


# Melitta Caffeo Solo microswitches in the gear drive replacement

If these microswitches on the drive do not work...

Written By: VauWeh



# INTRODUCTION

If these microswitches on the drive do not work precisely, the machine will not work properly and the drive may be damaged. Replacing the Cherry D41X microswitches is not very difficult.

Note: you can also open the drive without unscrewing it completely. Then skip the corresponding steps.



## TOOLS:

Screwdriver flathead 3.0x50 mm (1)

T3 Torx Screwdriver (1)

Tweezers (1)



## PARTS:

Mikroschalter D41X (2)

## Step 1 — Open the Melitta Caffeo Solo



 Pull out the power cord!

- Remove the water tank and drainage tray.
- Remove the side cover and remove the brewing unit.
- Remove all coffee beans.

## Step 2



- Unscrew and remove six Torx T10 on the rear.
- Lever the rear cover off. It will most likely be quite stuck and you will need to apply some force. You must use plastic lever tools to prevent damaging the cover.

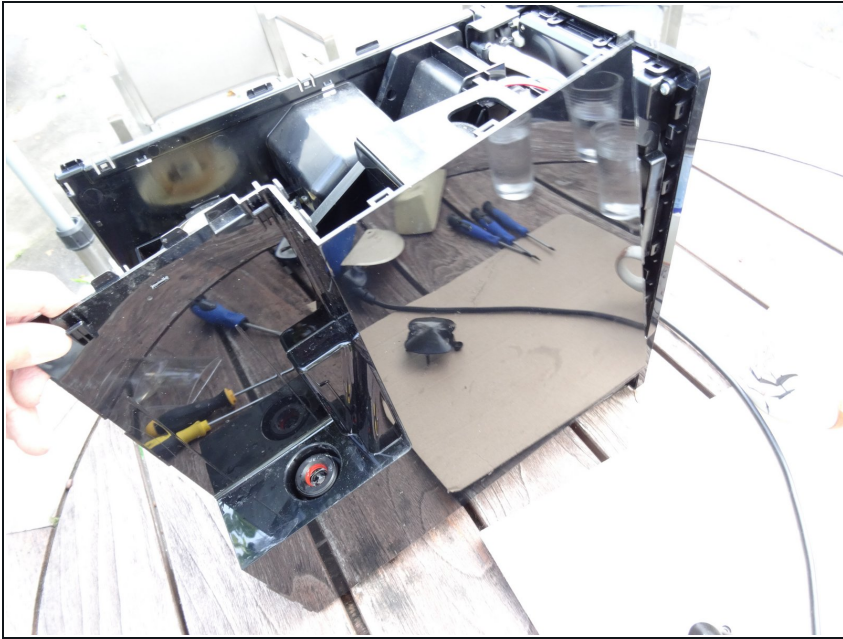


### Step 3



- Press carefully into the slits on the sides using a minus screwdriver or a flat metal spatula, to release the clasps on the upper surface. These may be well tight and you have to use some force.
- You should have created a separation between the upper surface and side panels. Now lever the upper covering away using a plastic tool. This may be quite stuck and you may apply some force.

## Step 4



- Place a plastic tool in the crack between front panel and left side panel and widen it. Then push the side panel to the back. The side panel will be quite stuck and you may apply some force to do this.
- Remove the hose from the water tank to the pump.
- Remove the side panel.

## Step 5



- Place a plastic tool into the crack between the front panel and the right side panel and widen it. Then push the side panel to the back. This may be quite stuck and you may need to apply some force.
- Remove the side panel.

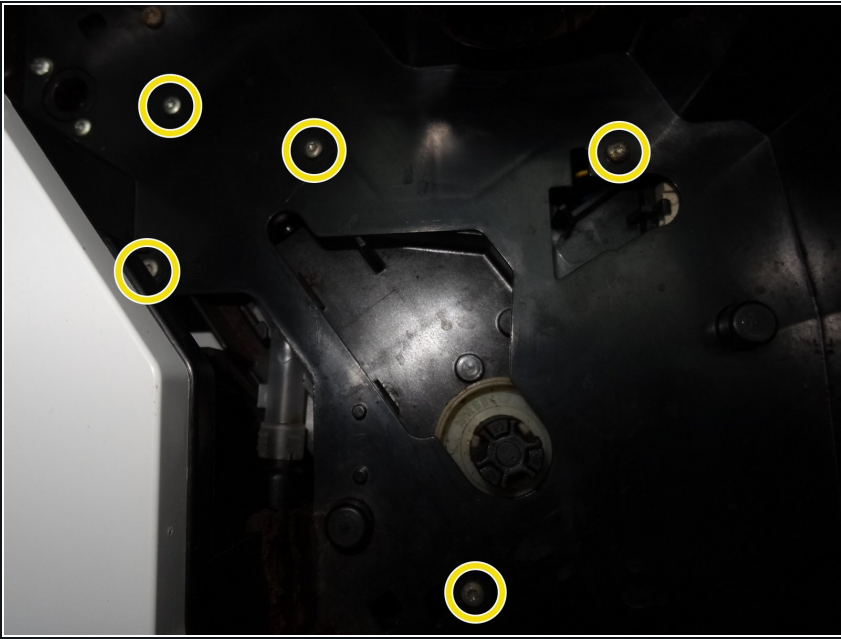
## Step 6 — Gear Drive



- Rotate clockwise the expansion box about 60 degrees and pull it out.
- ⓘ The expansion box is frequently filled with coffee oils or grounds. Clean it from time to time. It can easily be separated into two halves.

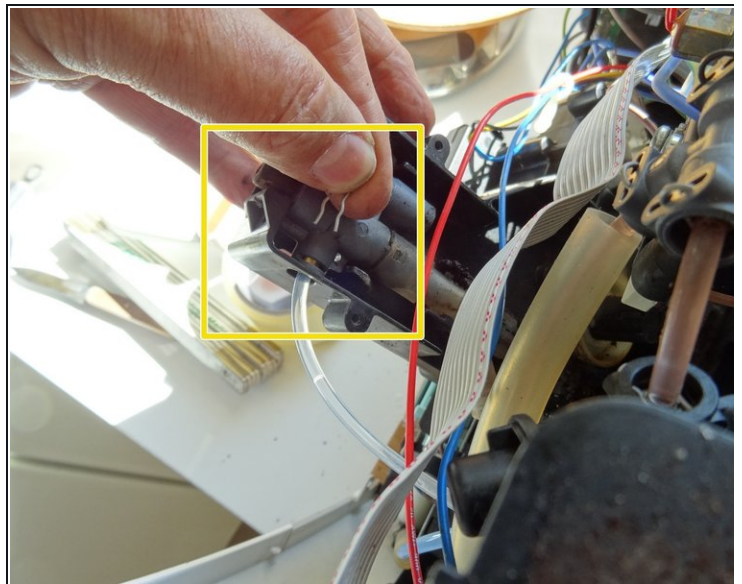
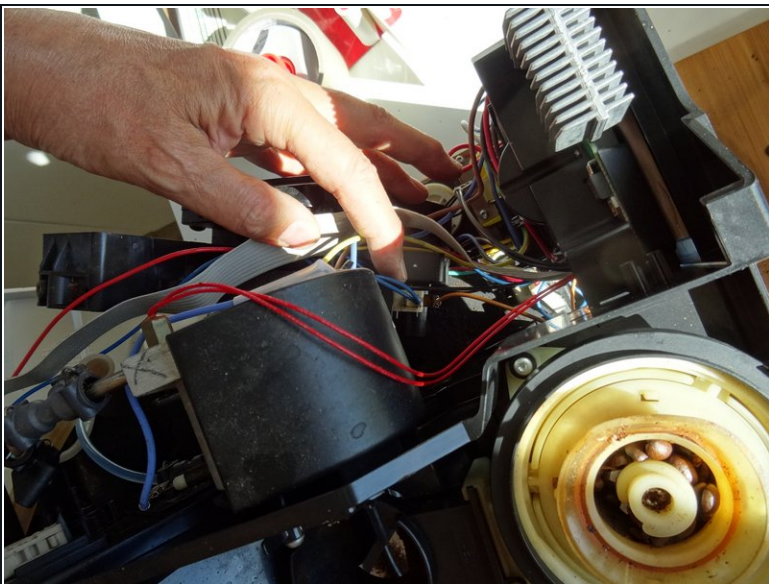


## Step 7



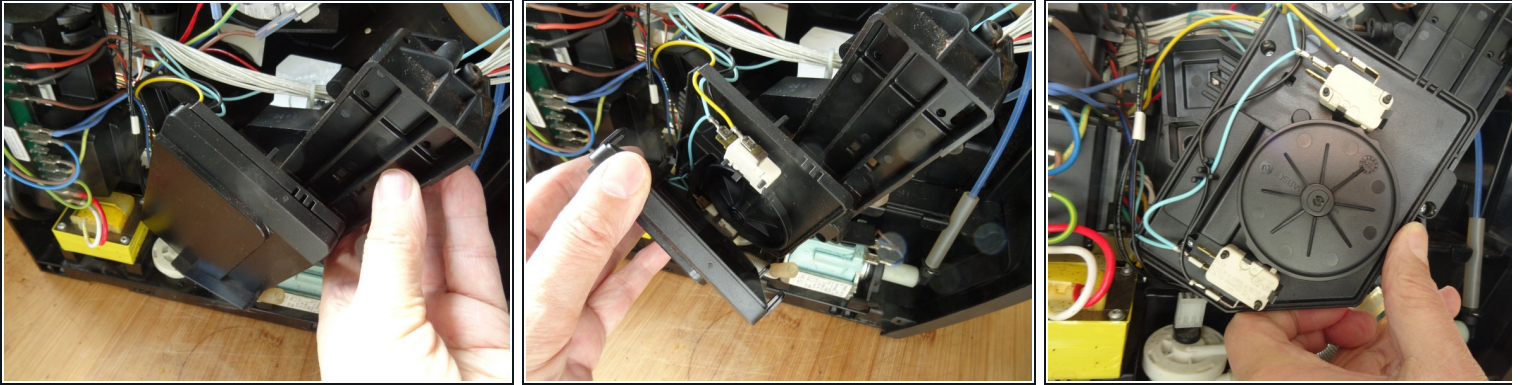
- ❗ The drainage valve is directly plugged to the gear drive. The drive is fixed with five Torx T10 screws on the center panel behind the brew group.
- Remove the five Torx T10 screws holding the gear drive in place.

## Step 8



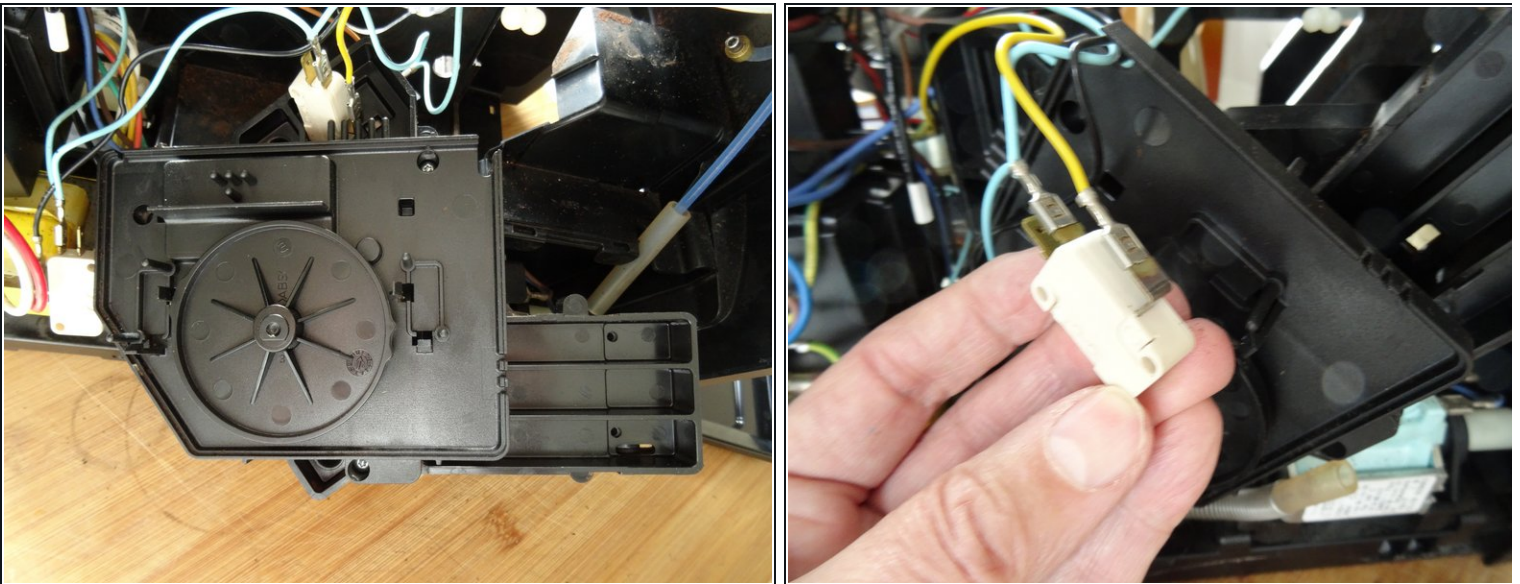
- Push the gear drive outwards to the left. Pay attention, several cables might get caught.
- Lay the gear drive on its side. Loosen the upper water connector by pulling the clamp and then sliding off the hose. Mind the O-ring on the end of the hose, replace it if necessary.

## Step 9 — Microswitches in the gear drive



- Open the cover over the drive. It is held by latches.
- Remove the cover.
- The two microswitches are exposed.

## Step 10



- The microswitches are held by detents. Release the catches.
- Remove the microswitches.
- Note how the cables are connected, disconnect the flat plugs and replace the switches.



---

Follow the the steps in reverse order to reassemble your device.