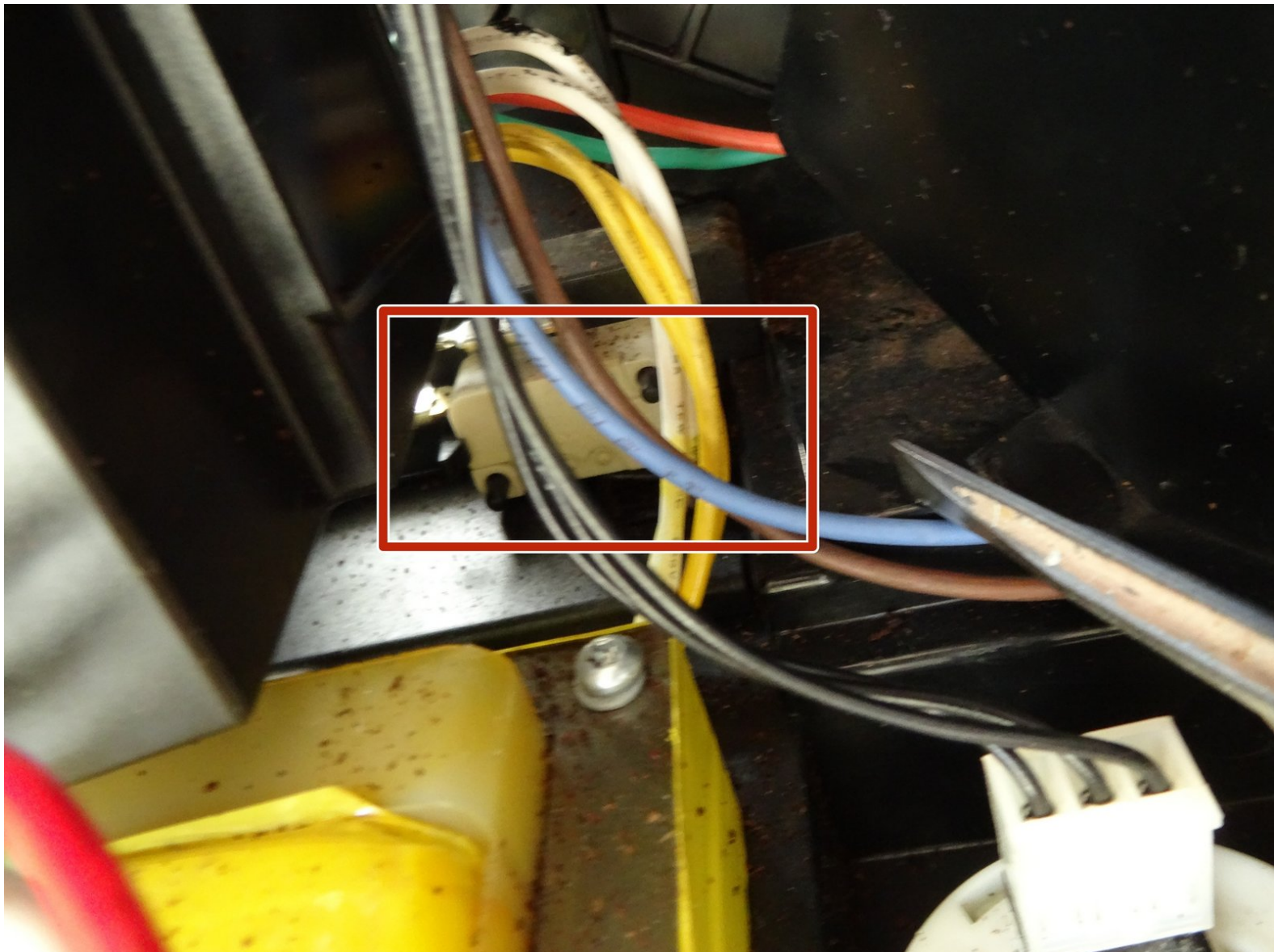




Melitta Caffeo Solo microswitch on the drip tray replacement

Melitta Caffeo Solo microswitch on the drip tray replacement

Written By: VauWeh



INTRODUCTION

If this switch does not work properly, the machine will permanently indicate a missing drip tray. Replacing the Cherry D44X switch is quite simple.

Note: it is also possible that only the carrier plate of the microswitch is no longer properly engaged. Tilt the machine so that you can see the base plate. See if the carrier plate is clamped with two catches. If not, open the machine and press the switch firmly until it locks into place. It may have to be replaced.



TOOLS:

- [New Item](#) (1)
- [Tweezers](#) (1)
- [T10 Torx Screwdriver](#) (1)




PARTS:

- [New Item](#) (1)

Step 1 — Open the Melitta Caffeo Solo



 Pull out the power cord!

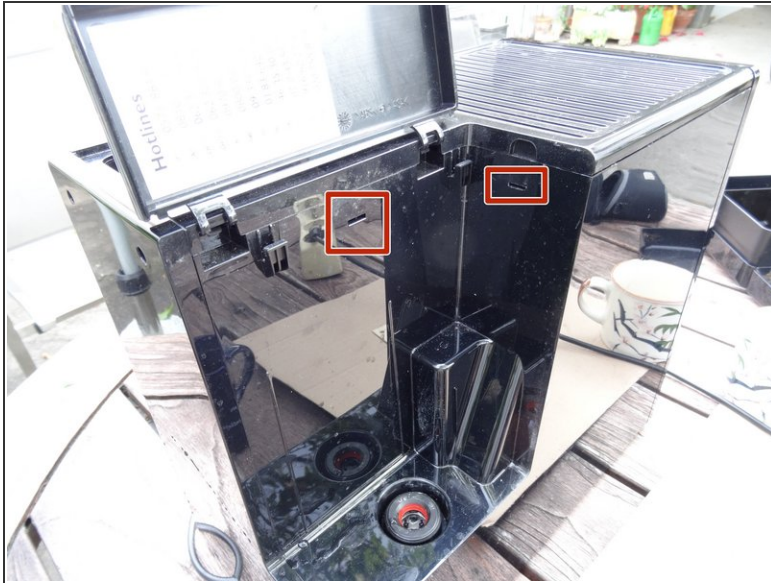
- Remove the water tank and drainage tray.
- Remove the side cover and remove the brewing unit.
- Remove all coffee beans.

Step 2



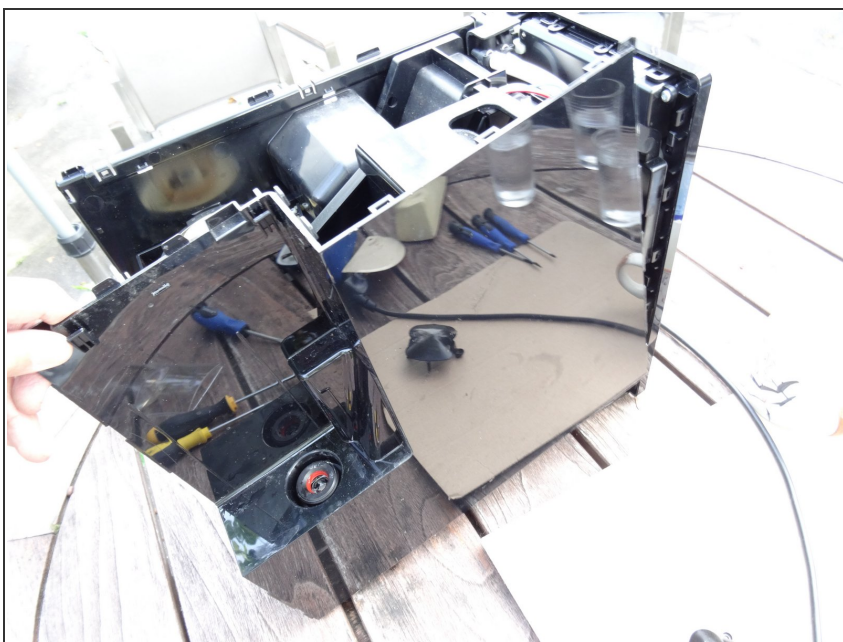
- Unscrew and remove six Torx T10 on the rear.
- Lever the rear cover off. It will most likely be quite stuck and you will need to apply some force. You must use plastic lever tools to prevent damaging the cover.

Step 3



- Press carefully into the slits on the sides using a minus screwdriver or a flat metal spatula, to release the clasps on the upper surface. These may be well tight and you have to use some force.
- You should have created a separation between the upper surface and side panels. Now lever the upper covering away using a plastic tool. This may be quite stuck and you may apply some force.

Step 4



- Place a plastic tool in the crack between front panel and left side panel and widen it. Then push the side panel to the back. The side panel will be quite stuck and you may apply some force to do this.
- Remove the hose from the water tank to the pump.
- Remove the side panel.

Step 5



- Place a plastic tool into the crack between the front panel and the right side panel and widen it. Then push the side panel to the back. This may be quite stuck and you may need to apply some force.
- Remove the side panel.

Step 6 — Gear Drive



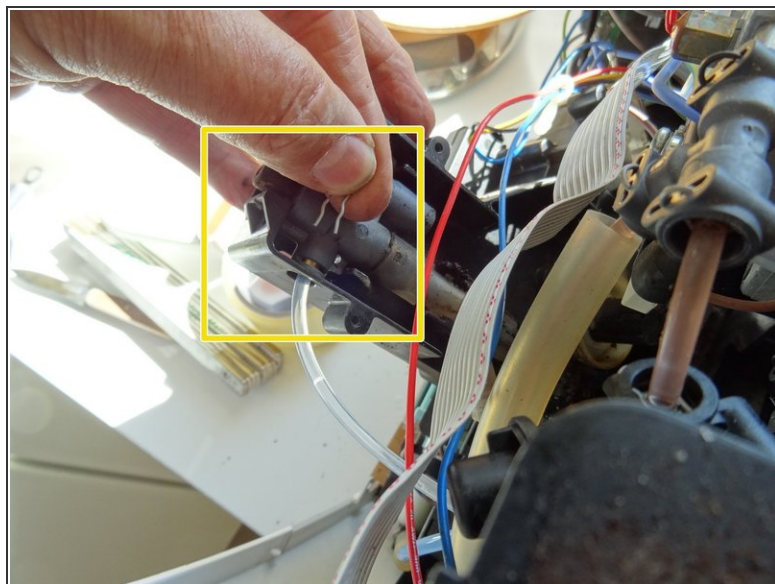
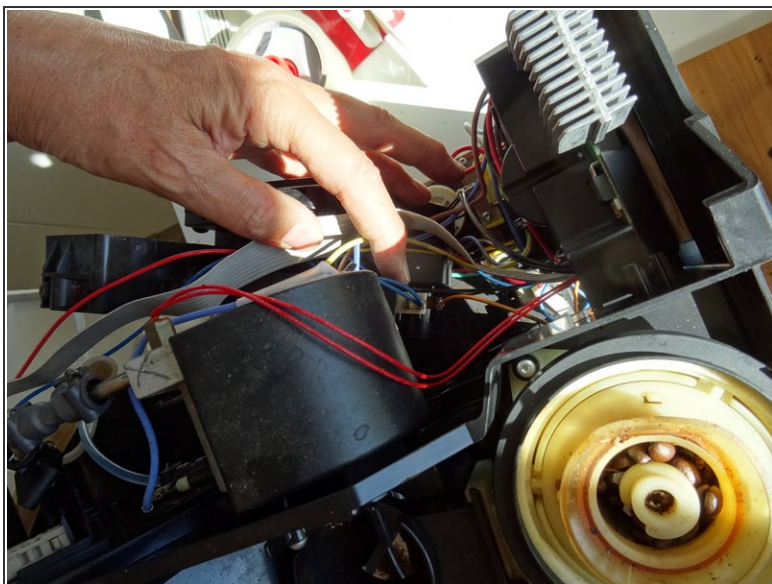
- Rotate clockwise the expansion box about 60 degrees and pull it out.
- i** The expansion box is frequently filled with coffee oils or grounds. Clean it from time to time. It can easily be separated into two halves.

Step 7



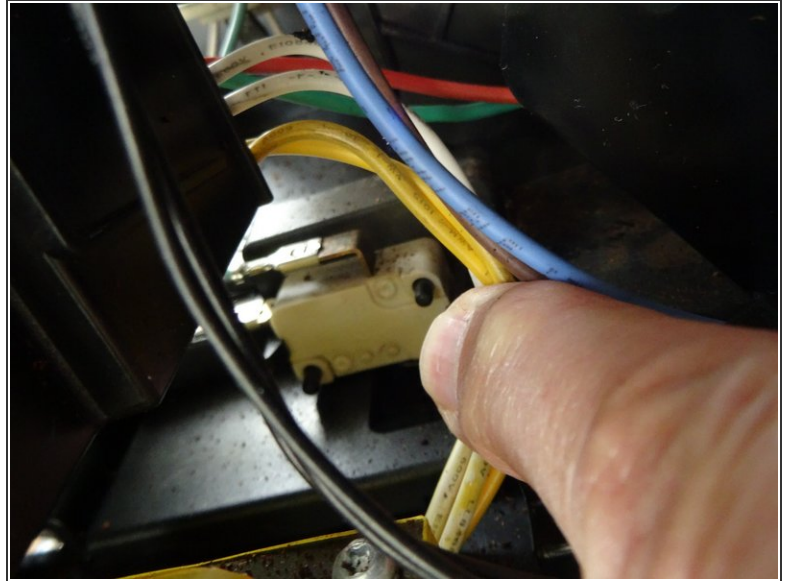
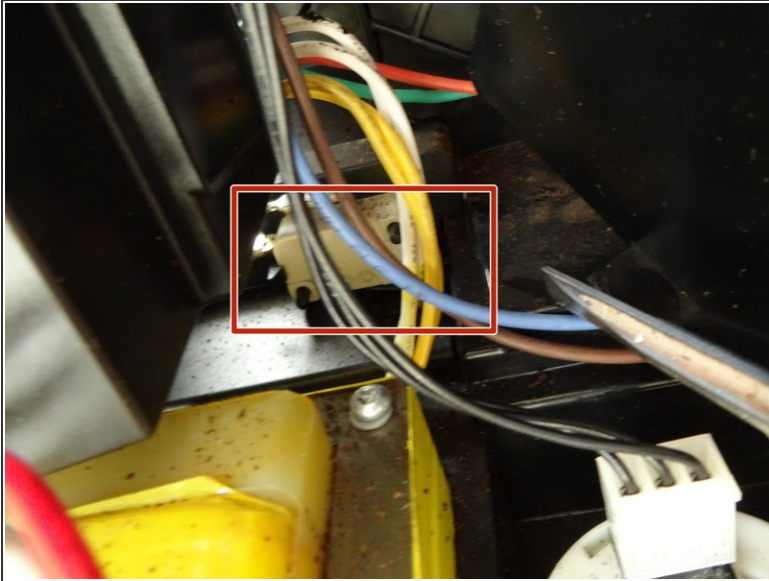
- i** The drainage valve is directly plugged to the gear drive. The drive is fixed with five Torx T10 screws on the center panel behind the brew group.
- Remove the five Torx T10 screws holding the gear drive in place.

Step 8



- Push the gear drive outwards to the left. Pay attention, several cables might get caught.
- Lay the gear drive on its side. Loosen the upper water connector by pulling the clamp and then sliding off the hose. Mind the O-ring on the end of the hose, replace it if necessary.

Step 9 — Microswitch on the drip tray



- The micro switch is a little bit hidden behind cables. It is held by latches.
- Push the cables aside, loosen the catches with a metal spudger and take the switch out.
- Note how the cables are connected, disconnect the flat plugs and replace the switch.
- ⓘ Note: it may happen that only the carrier plate of the microswitch is no longer properly engaged. Tilt the machine so that you can see the base plate. See if the carrier plate is clamped with two catches. Press firmly on the microswitch until the plate engages. It may have to be replaced.

Follow the the steps in reverse order to reassemble your device.