



Toshiba Satellite U405D-S2902 CD/DVD Drive Replacement

This guide will show you how to replace the laptop's CD/DVD drive should it cease to function properly.

Written By: Brandon Kirklen



INTRODUCTION

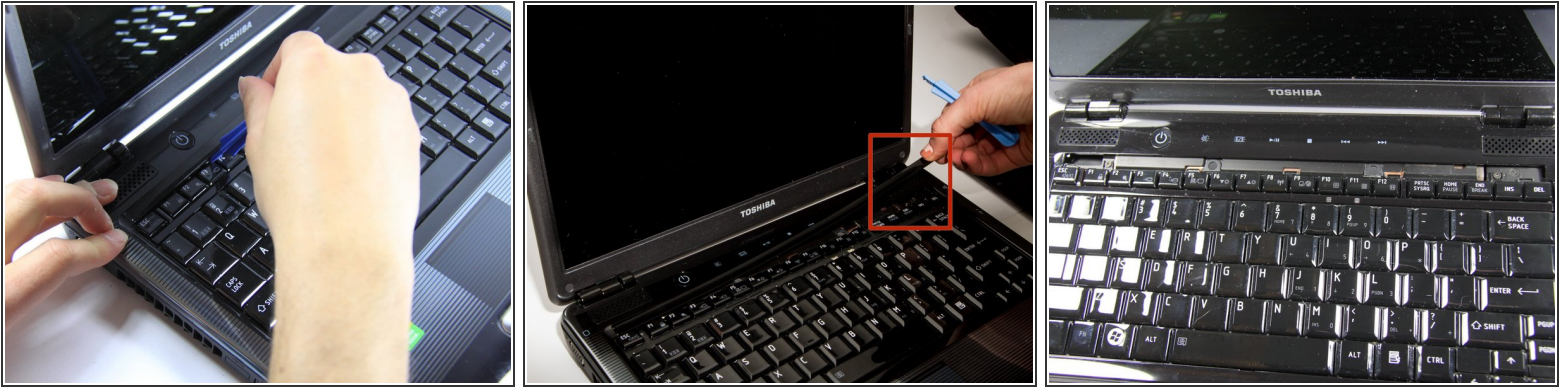
This installment requires removing a few screws and separating the plastic cover of the laptop allowing you to access the CD/DVD drive. Removing the cover will take a little bit of prying, but make sure to not force anything as you don't want to crack it.



TOOLS:

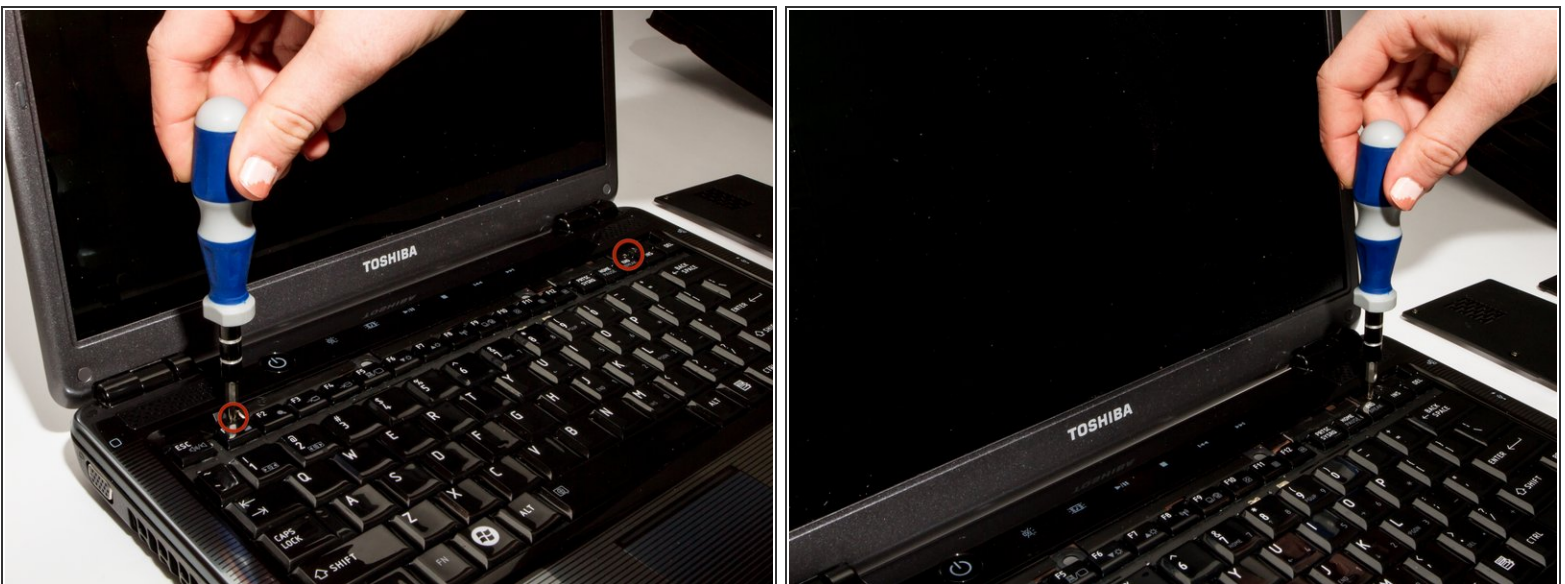
- [Phillips #0 Screwdriver](#) (1)
 - [iFixit Opening Tools](#) (1)
-

Step 1 — Keyboard



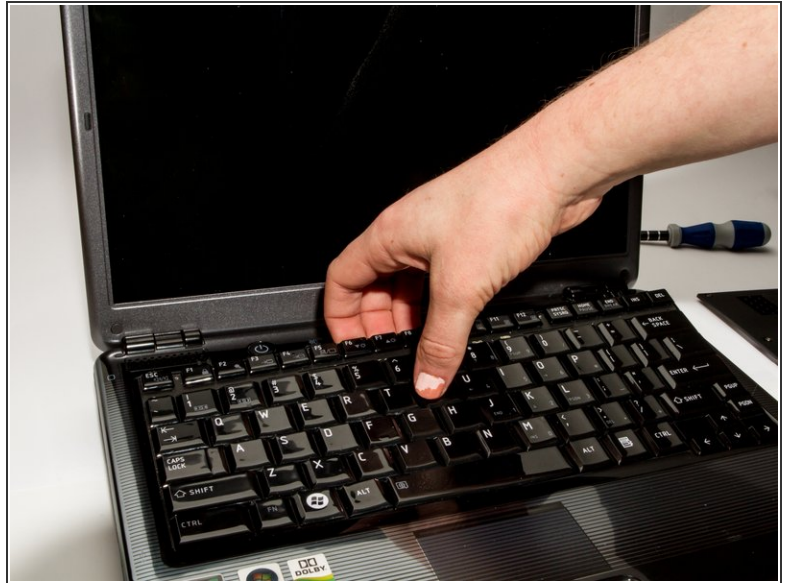
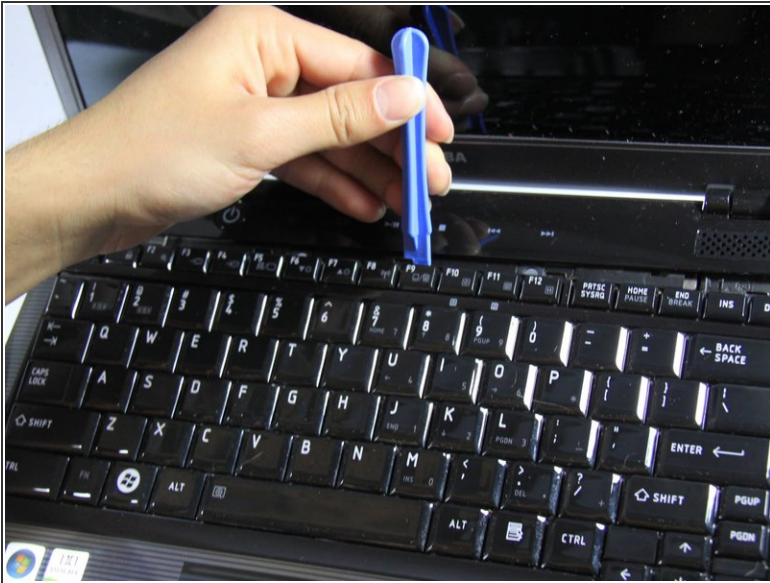
- Situate the laptop so that it is open and the display is facing you.
- Use the plastic opening tool to pry the black plastic insert upward. The insert can be found at the top of the keyboard.
- Once the insert is loose, carefully remove it from the device.

Step 2



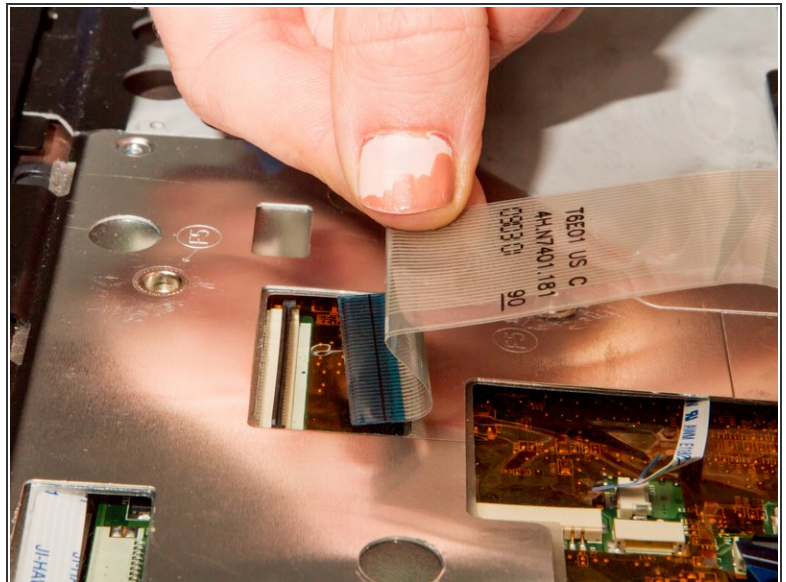
- Using #1 Phillips Screwdriver, remove both of the 5 mm screws that are located beneath the insert.

Step 3



- Use the plastic opening tool to begin removing the keys off of the device.
- ❗ Once the keys are off, gently remove the keyboard. Be careful of the ribbon cable that still connects the keyboard to motherboard.

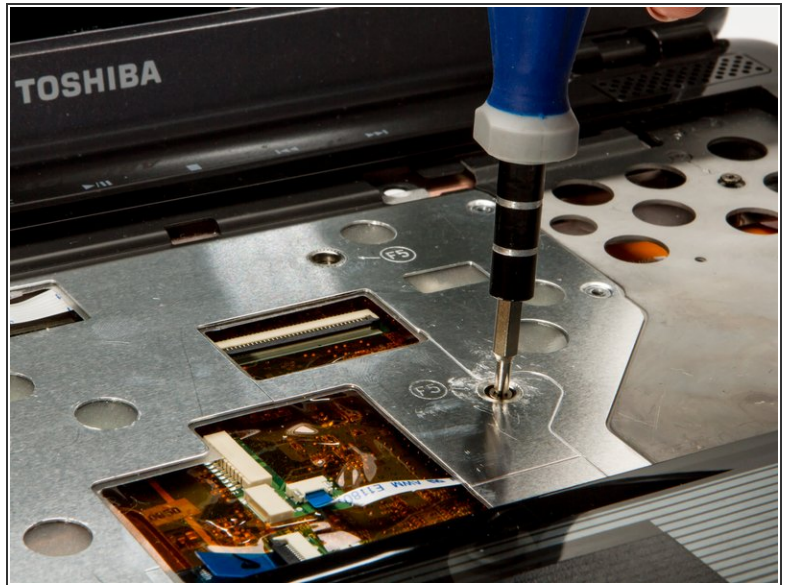
Step 4



- Lift up the gate on the ZIF socket to release the ribbon.
- Ease the ribbon connecting the keyboard to the motherboard out of the ZIF socket.

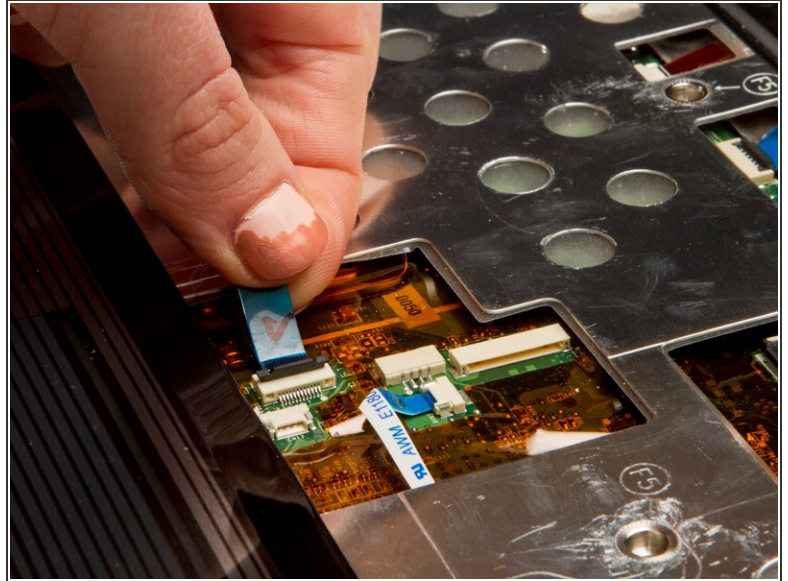
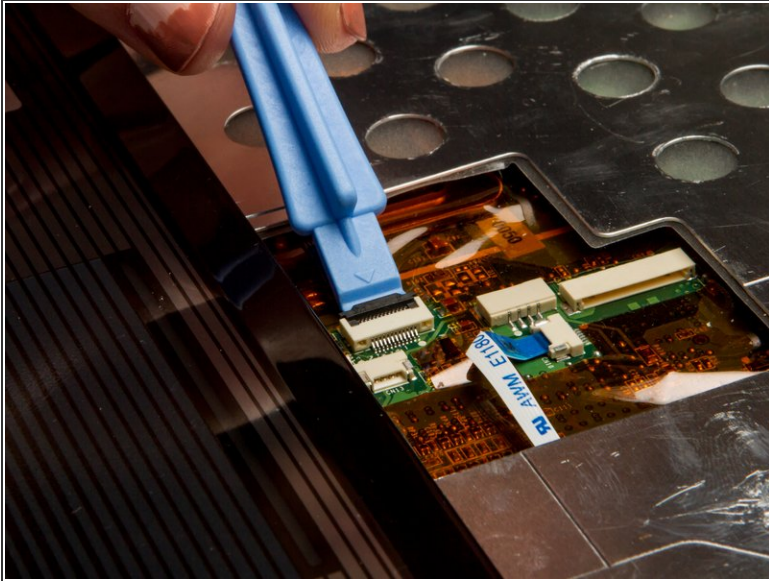
This document was generated on 2020-11-15 01:01:44 AM (MST).

Step 5 — CD/DVD Drive



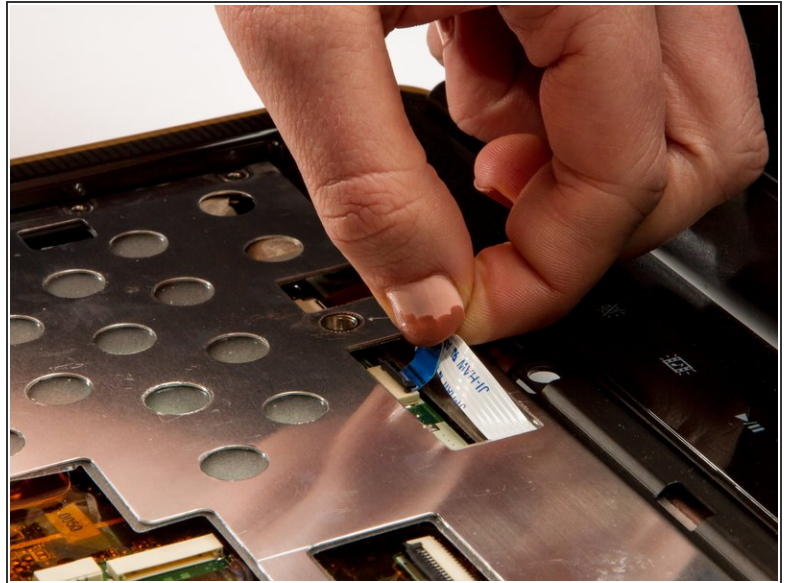
- With the keyboard removed, locate the marked screws.
- Remove the marked 5mm screws using the #1 Phillips Screwdriver.

Step 6



- In the rectangular opening directly above the mouse pad, use the plastic opening tool to push up the tiny black gate of the ZIF socket (fancy name for the white connector).
- Remove the ribbon from the ZIF socket.

Step 7



- Locate the wide opening at the top in the direction toward the screen.
- Use the plastic opening tool to open the black ZIF gate.
- Remove the blue ribbon.

Step 8



- Use the plastic opening tool to separate the top faceplate.
 - ❗ The faceplate consists of the entire shiny plastic surface and the holed metal center where the keyboard would normally be.
- Carefully pry the faceplate away from the laptop's base by sliding the plastic opening tool around the perimeter of the entire device. You'll hear the sound of several clicks as you do this.
- ⚠ Prying apart the faceplate will take a little convincing, but be sure to not bend it too much. It would be a shame to put a crack in its glossy shine.

Step 9



- Gently lift the disk drive by its outward facing edge (the one with writing on it).
- Pull the disk drive up and away from the laptop.

To reassemble your device, follow these instructions in reverse order.