



Toshiba Satellite L15W-B1303 Charging Port Replacement

How to replace a Toshiba Satellite L15W-B1303 charging port.

Written By: Alejandro Oliveros



INTRODUCTION

Use this guide to replace the charging port to your Toshiba Satellite L15W-B1303 laptop.

The charging port is where you plug the charging cable in order for your laptop to have power and run. It can become damaged due to many reasons like liquid spills or accidentally dropping/hitting your laptop. If you know you broke this crucial piece or are plugging your charging cable in and nothing is happening, you will need to replace it.

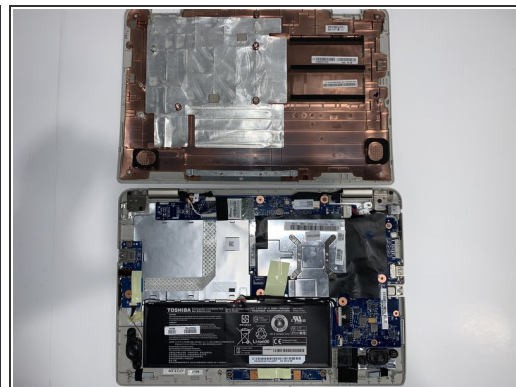
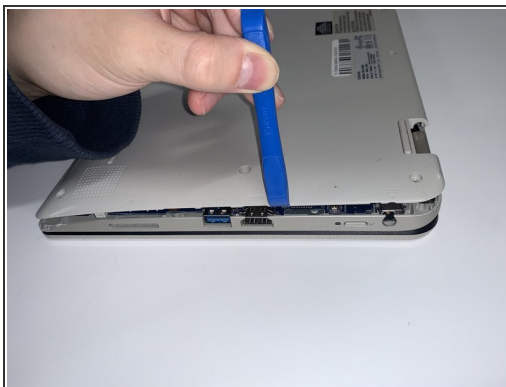
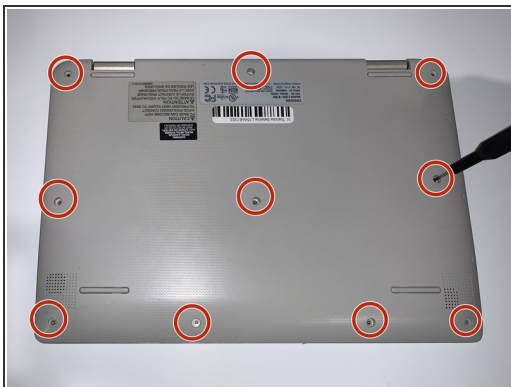
Before using this guide make sure to refer to the [Troubleshooting Page](#)—oftentimes, you may be misled to thinking your laptop is not charging but it could be facing different issues like battery issues.



TOOLS:

- [J00 JIS Screwdriver](#) (1)
 - [iFixit Opening Tools](#) (1)
 - [Spudger](#) (1)
-

Step 1 — Bottom Panel



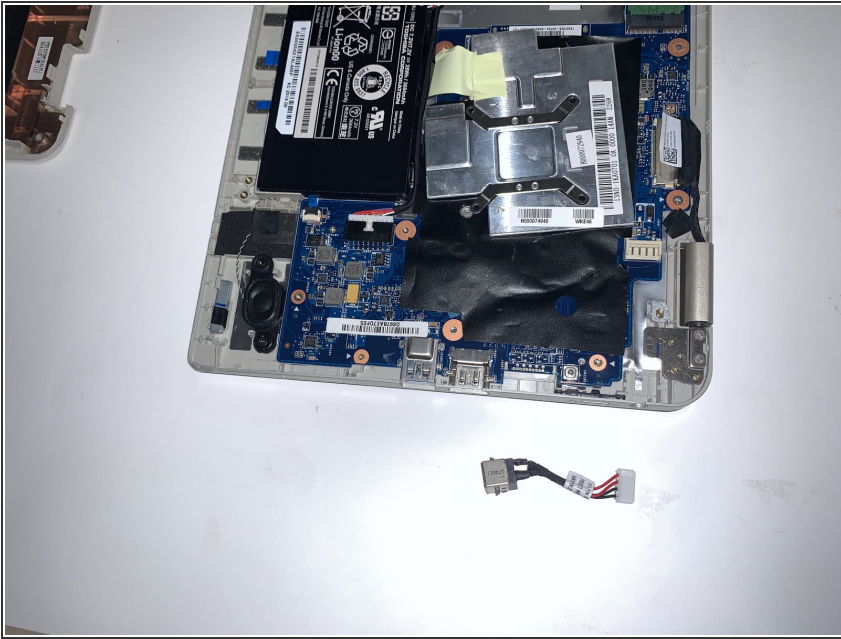
- Turn the laptop over and place it on its top side.
- Remove ten 10mm JIS #00 screws from the bottom panel of the laptop.
- Using the iFixit opening tool, remove the bottom panel of the laptop.

Step 2 — Charging Port



- Detach the white connector from the laptop using the pointed end of a spudger.

Step 3



- Once the port has been disconnected, carefully lift the whole charging port off the panel.

To reassemble your device, follow these instructions in reverse order.