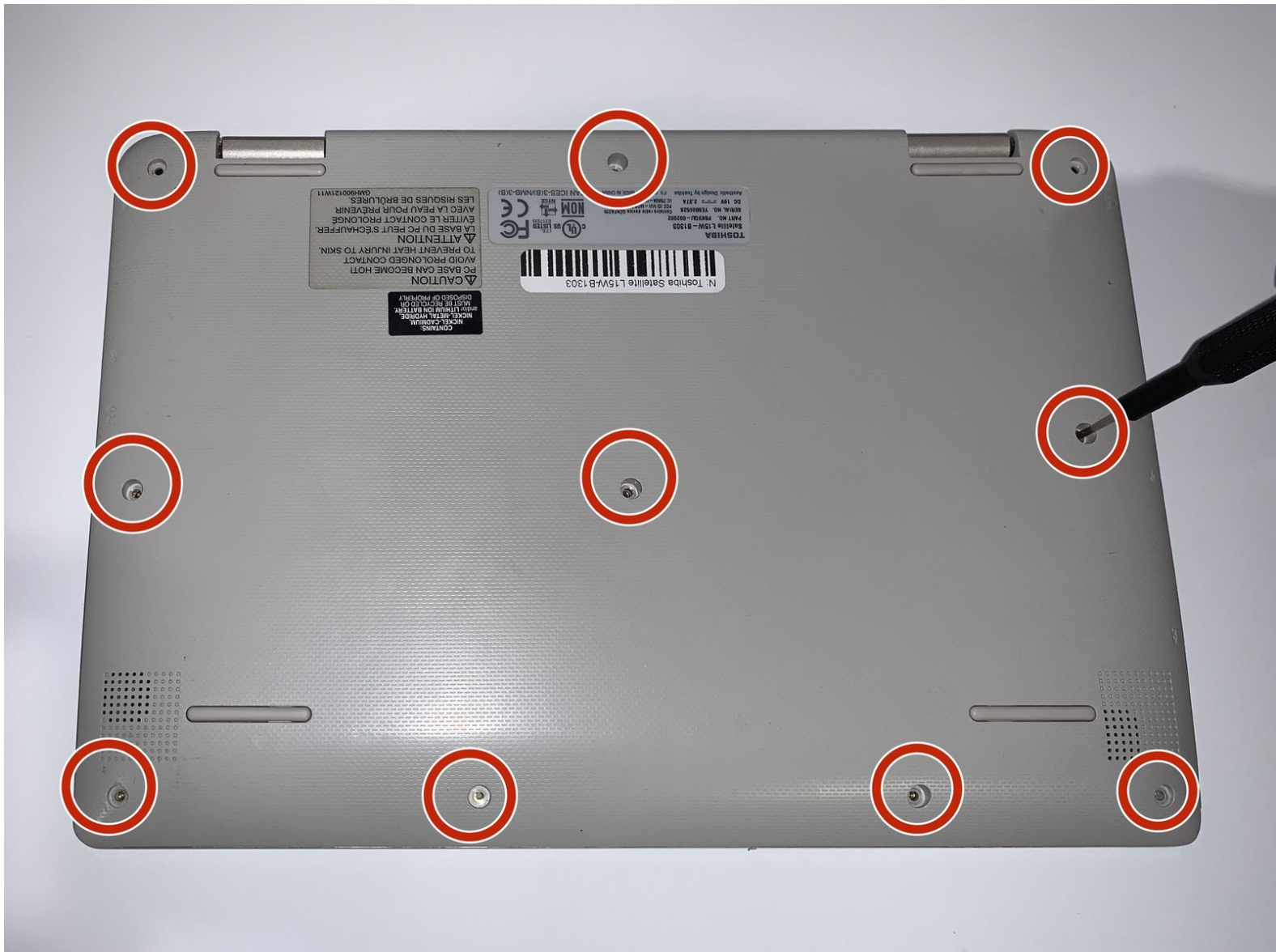




# Toshiba Satellite L15W-B1303 Bottom Panel Replacement

How to replace a Toshiba Satellite L15W-B1303 bottom panel.

Written By: Peyton Campbell



---

## INTRODUCTION

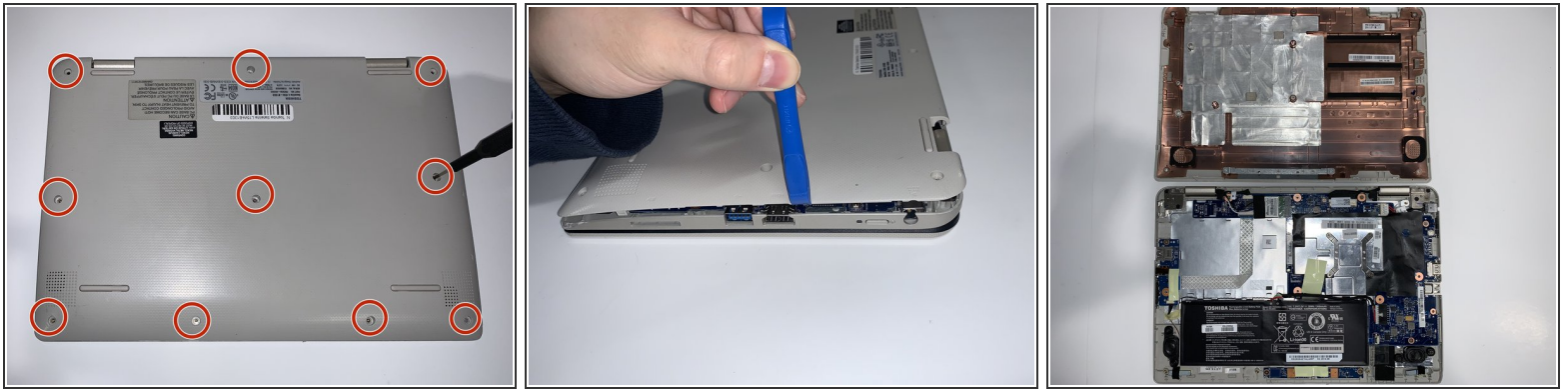
The bottom panel is a prerequisite to get into all the other parts inside the Toshiba Satellite L15W-B1303. This is a guide on how to remove it.



### TOOLS:

- [J00 JIS Screwdriver](#) (1)
  - [iFixit Opening Tools](#) (1)
-

## Step 1 — Bottom Panel



- Turn the laptop over and place it on its top side.
- Remove ten 10mm JIS #00 screws from the bottom panel of the laptop.
- Using the iFixit opening tool, remove the bottom panel of the laptop.

To reassemble your device, follow these instructions in reverse order.