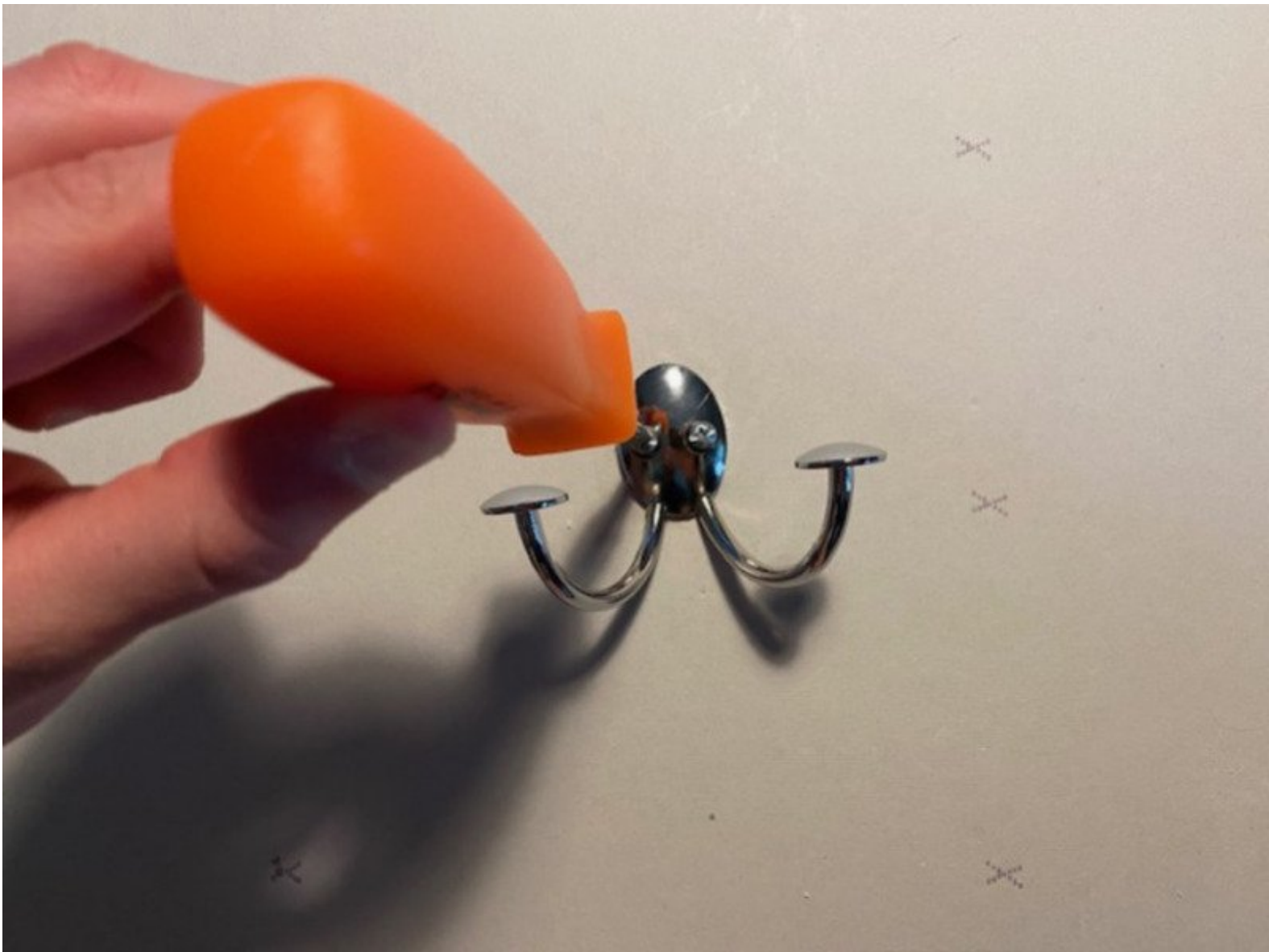




# How to replace a broken towel hook on drywall

This guide will instruct you on how to remove a broken towel hook, patch the drywall, and install a new one!

Written By: Pietro Coso



---

## INTRODUCTION

Hey there!

On this guide, I will show you how to remove a broken towel hook on drywall, patch the hole, and install a new one!

Before you start, make sure you have the required tools and be careful around the screwdriver!

This guide will not take long, only around 10-15 minutes, but you'll have to come back to this a few hours after you're done installing the new hook to clean up the old hole.

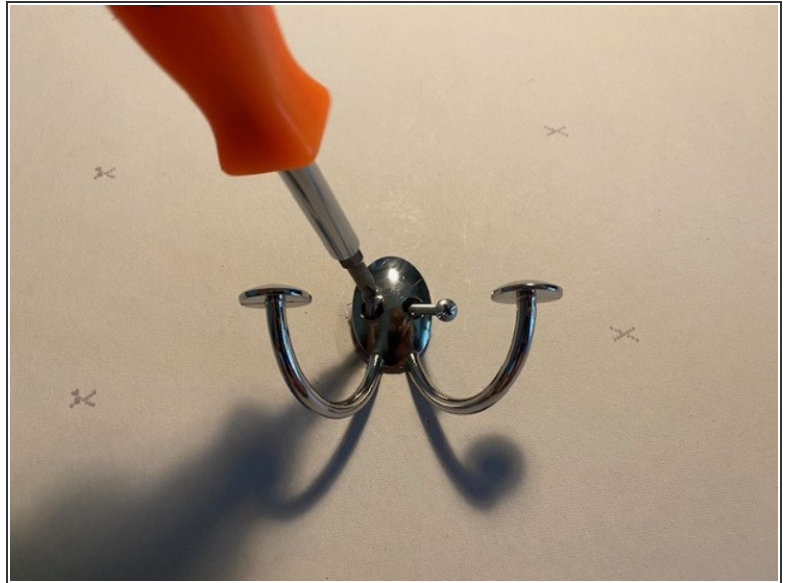
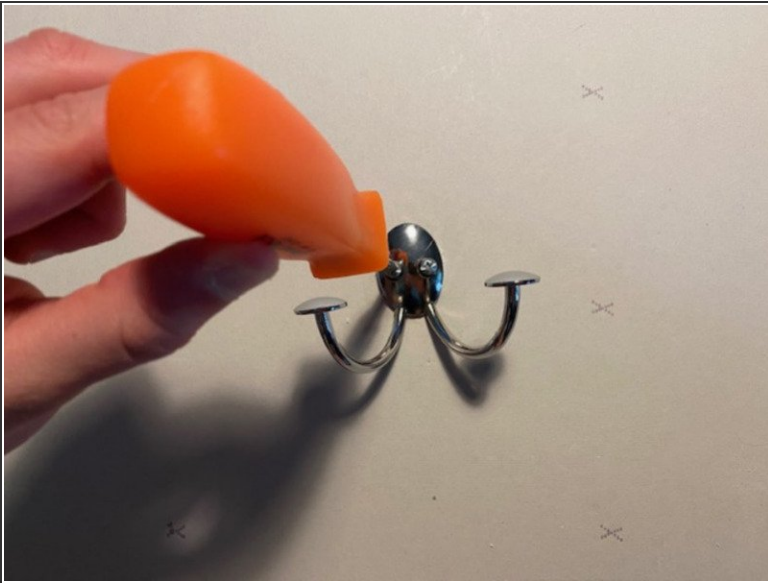
Happy Fixing!



### TOOLS:

- [Phillips #1 Screwdriver](#) (1)
-

## Step 1 — Towel Hook



- Using your Phillips screwdriver, remove both screws that are keeping your current (broken) drywall hook in place.
- ⓘ Make sure you remove both screws evenly, to avoid bending and damaging the screws and the drywall around it.

## Step 2



- After removing both screws, remove the plastic anchor screws from the drywall.
- ⓘ It will leave a big hole, but we will fix that!

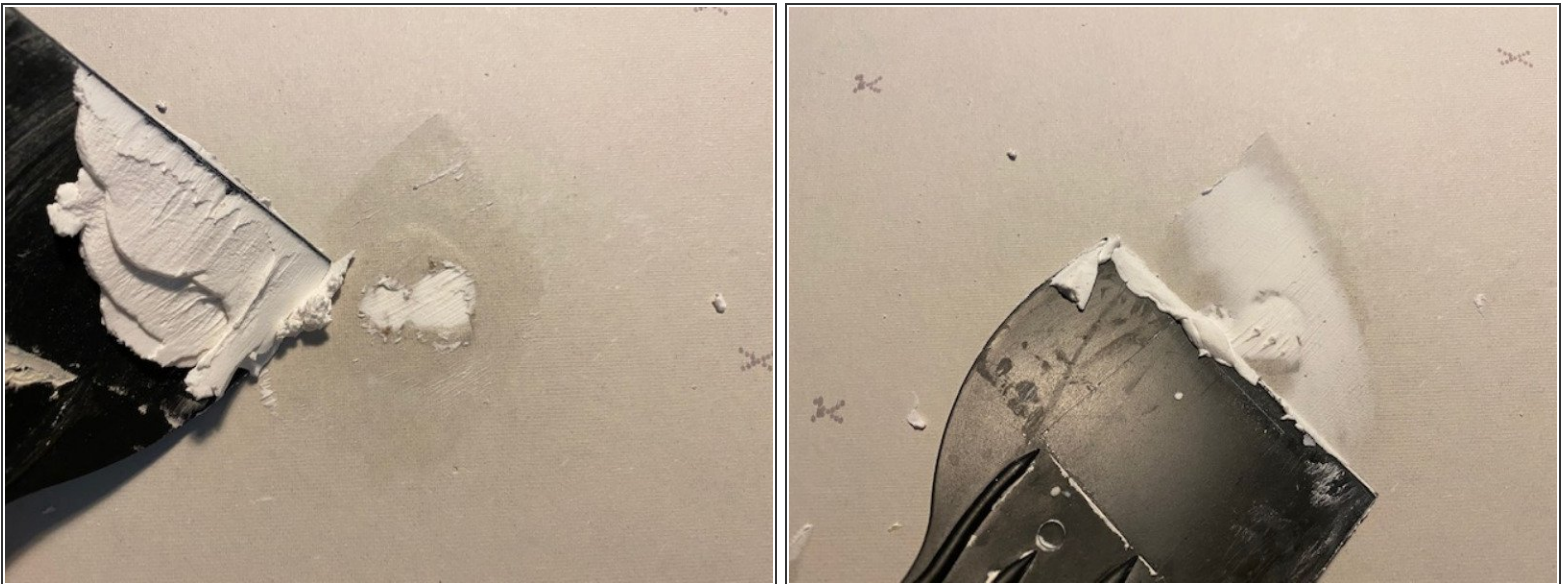


### Step 3



- After removing the anchor screws, take your spatula and press it flush with the wall. Remove debris from the drywall to make the wall flat.

### Step 4



- Take some patching and with your spatula, apply it on and around the holes in order to fill it up to the surface of the wall.

## Step 5



- Select a new location for your new towel hook and, with one of the screws, mark the spot where you'll drill the holes.
- Use your screwdriver to tap the two new locations, to make it easier to screw the anchors onto the wall.



## Step 6



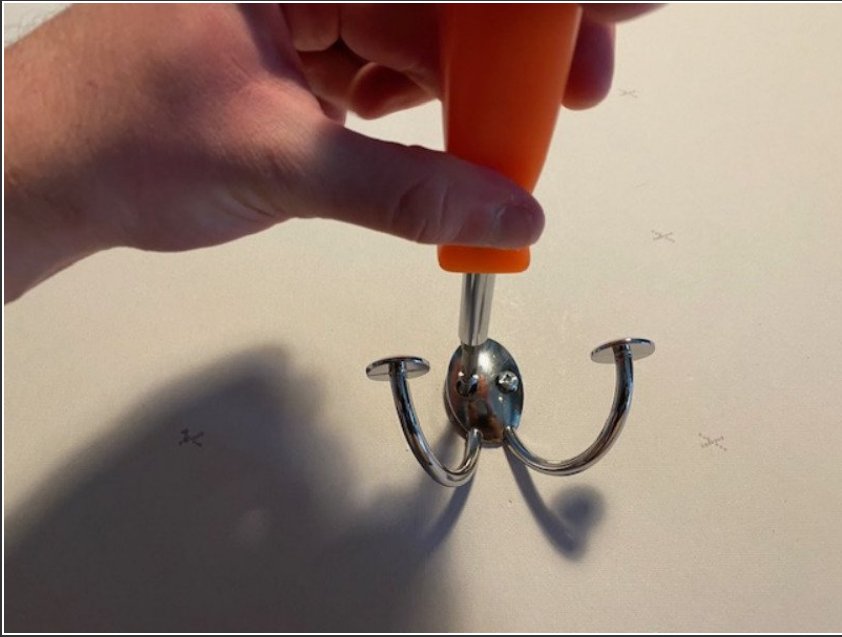
- Take your new anchor screws and start drilling on your marked holes.
- Keep screwing them into the drywall until they're flush with the wall.
- ⚠ Don't drill too far, or else it will damage the drywall and the towel hook will be uneven!

## Step 7



- Line up your new towel hook with the holes where the anchors are located.
- Take your screws and start screwing them in manually so they stay in place.

## Step 8



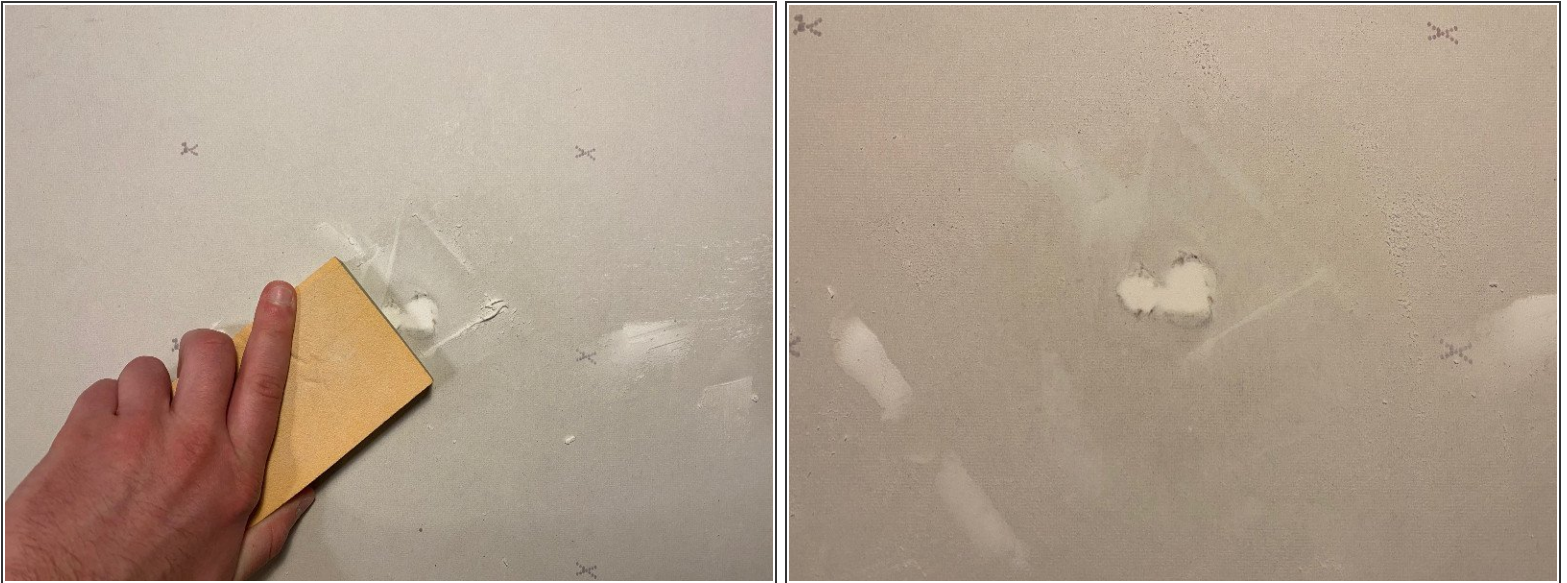
- With your screwdriver, continue screwing the screws in until they're flush with the towel hook.

## Step 9



- **Voila!** Your new towel hook is installed!
- But how about the hole we patched earlier?

## Step 10



- Press the sandpaper against the wall and scrub on and around the hole, to level it with the wall.
- After doing that for a few seconds, your patch should be leveled and your problem, solved!

This guide shows both removing the old, broken towel hook and installing the new towel hook! Hope it helped!