



Samsung Galaxy A20e Display Assembly Replacement

How to disassemble the device to change the screen

Written By: ZFix



INTRODUCTION

Samsung A20e - Broken Screen Replacement

[video: <https://www.youtube.com/watch?v=c0cTl2gautU>]



TOOLS:

- [Phillips #1 Screwdriver](#) (1)
 - [iFixit Opening Picks set of 6](#) (1)
 - [Tweezers](#) (1)
-

Step 1 — Display Touch Screen Assembly Spare part



- This is Display Touch Screen Assembly with Frame

Step 2 — Back Cover Removal



- Remove the SIM tray
- To remove the back cover use a plastic opening tool
- When you remove the back cover, press the Touch ID to unstick it from the back cover

Step 3 — Fingerprint Sensor Removal



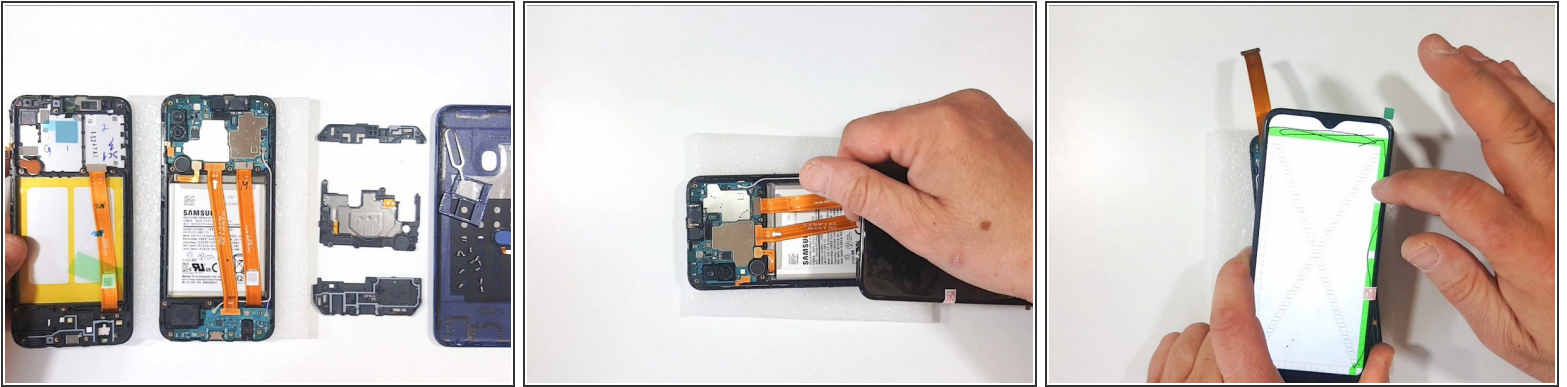
- With a Phillips Screwdriver remove all the screws
- With a Plastic Opening Tool:
 - Remove the Antenna Assembly
 - Disconnect and remove the Touch ID Fingerprint Sensor

Step 4 — Logic Board Cover Removal



- Remove the Logic Board Plastic Cover
- Remove the Sup-board Plastic Cover

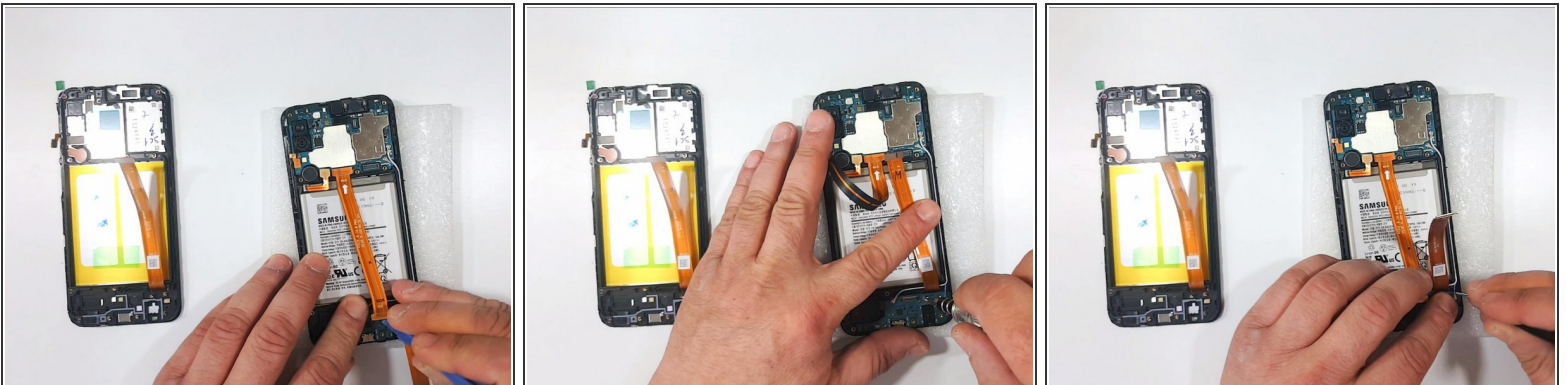
Step 5 — Test the New Spare part



- Its time to test the new spare part

 **Do not** forget to disconnect the battery before you start working on the device.

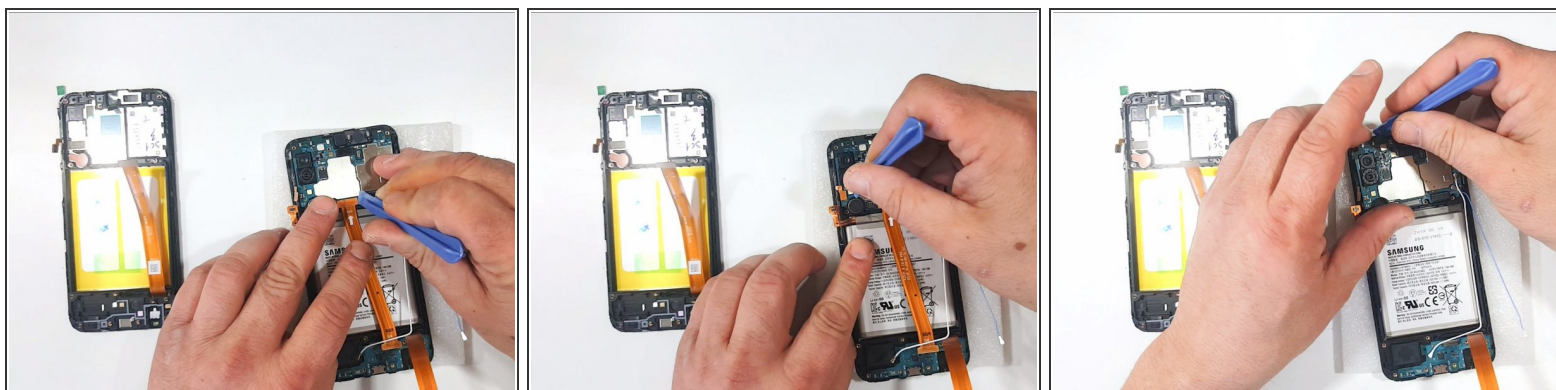
Step 6 — Logic Board Removal - Part 1



 **Disconnect the Battery**

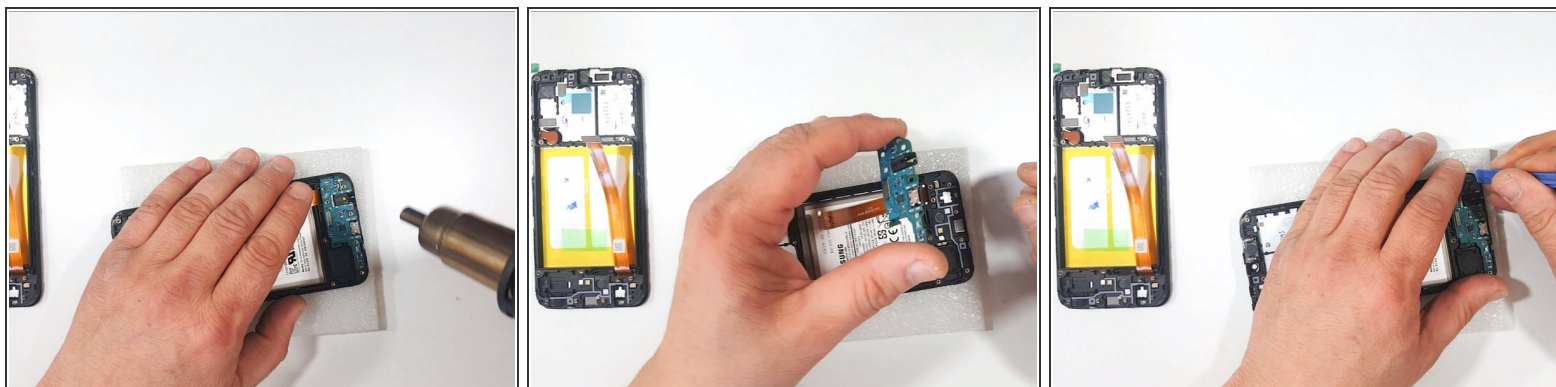
- Disconnect the Sup-board Flex Cable
- Disconnect the Coaxial Antenna Cables. Do it very carefully because you can easily damage them

Step 7 — Logic Board Removal - Part 2



- Remove the Sup-board Flex Cable
- Disconnect the Volume buttons Flex Cable
- Gently remove the Logic board. Be careful for the cameras

Step 8 — Sup-board removal



- Use Hot air to soften the adhesive and gently remove the sup-board



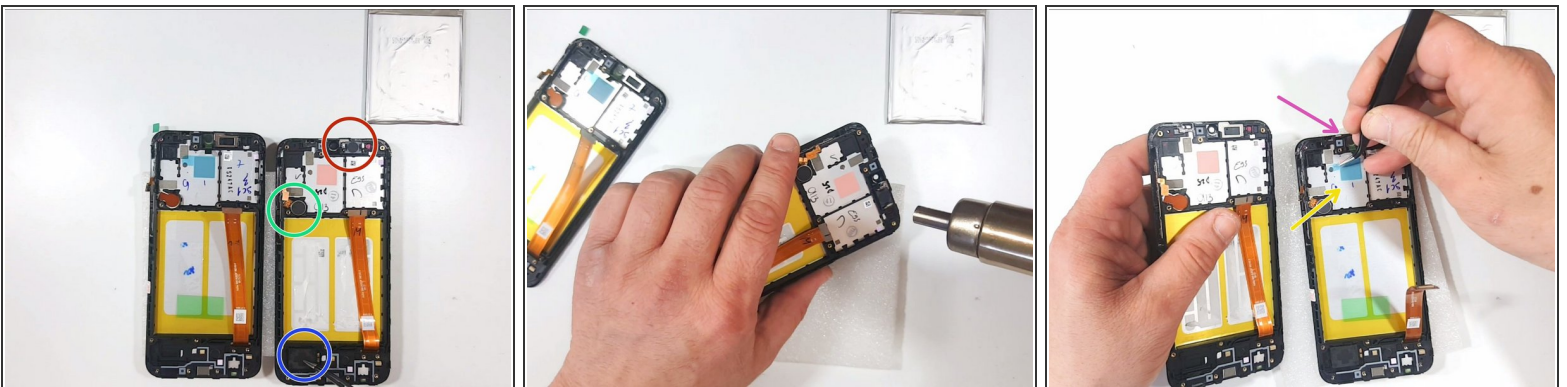
Its better to use a plastic tools

Step 9 — Battery Removal




- To remove the Battery use a few drops of alcohol and warm the device.

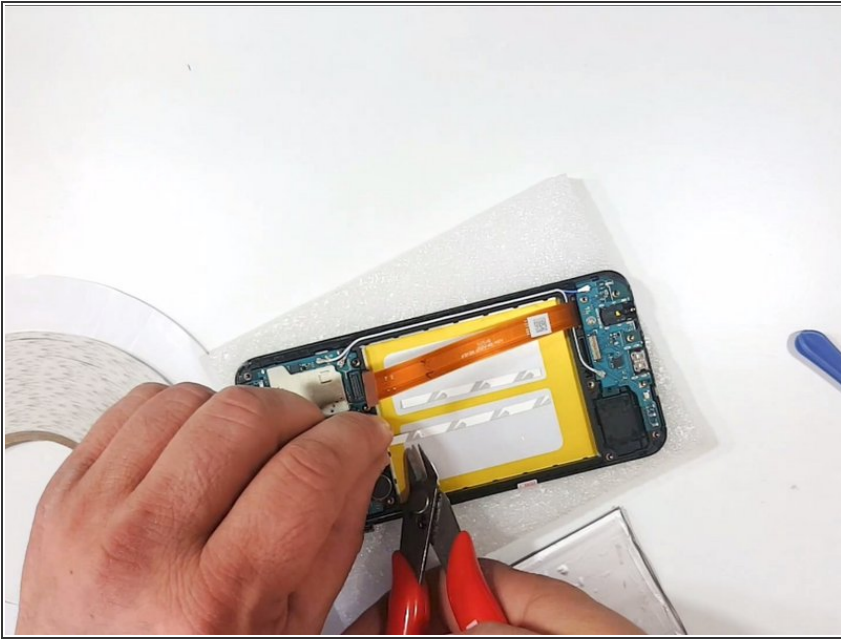
Step 10 — Transfer the Receiver, Loudspeaker and the Vibration-motor



- Now you have to transfer:
 - Receiver
 - Vibromotor
 - Loudspeaker
- Remove the transport tapes from:
 - Silicon Thermal Pad
 - Front Camera Hole

 Use Hot Air to do this easily

Step 11 — Battery



- Use Double side Adhesive tape to install the battery to the new frame

Step 12



- "All's Well That Ends Well."

To reassemble your device, follow these instructions in reverse order.