



Samsung Television UE49KU6640 Backlight Replacement

Backlight repair of a 4k UHD Samsung 6 series screwless curved TV

Written By: Maarten N.





TOOLS:

- [Flathead Screwdriver](#) (1)
- [Pro Tech Toolkit](#) (1)
- [Painter's Tape](#) (1)
- [New Item](#) (1)

Optional

- [Phillips #2 Screwdriver](#) (1)



PARTS:

- [New Item](#) (1)
- [New Item](#) (1)

Step 1 — Remove the cover



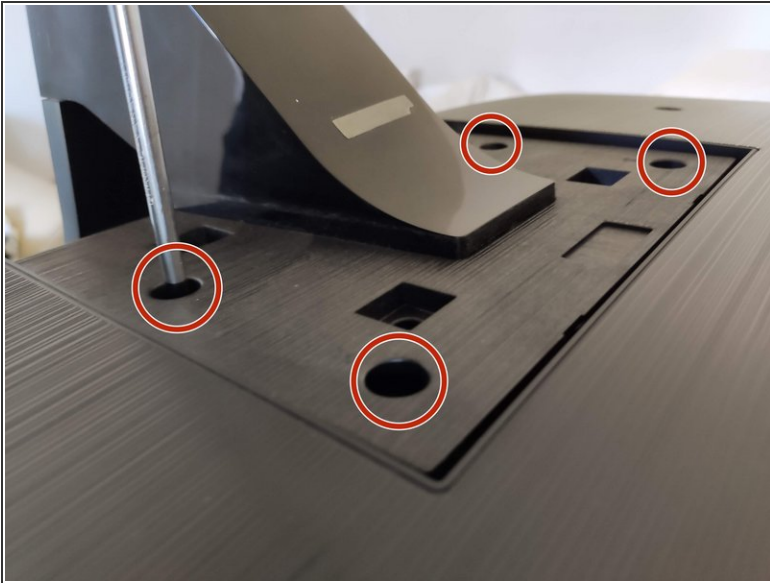
- Remove the cover at the base at the back

Step 2 — Work safely



- Place the TV on a mattress or other soft surface to avoid stress in the TV.
- ⓘ By putting a folded blanket in the middle under the TV, the weight of the TV will be distributed more equally. This will help working safely in the next steps.

Step 3 — Removing the base



- Loosen and remove the four screws from the holes.
- Slide the base out of the TV.

Step 4 — Preparation for removing panel



Yellow clips are close to crucial electronics.



Check and remove the common interface card holder. If this is not done the mainboard can be damaged.



Red clips are approximately 40mm from the edge. Yellow clips are 25mm from the edge. Blue clips are at the bottom and green clips are further inside and need be forced out.

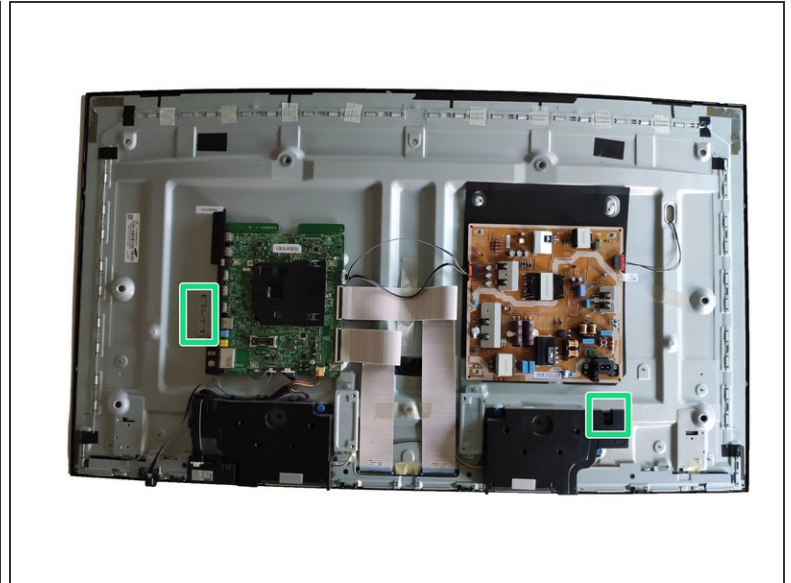
- Mark a flathead screwdriver with a piece of tape at 35mm from the head.
- Stick the flathead screwdriver in the side (parallel to the tv panel). When the screwdriver is turned it should unclip the backpanel.
- Work around the tv to loosen all clips.

Step 5 — Remove the Panel



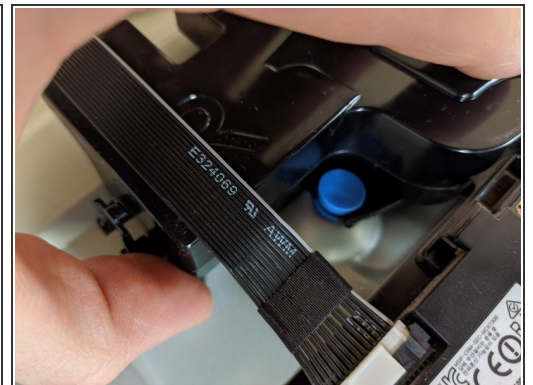
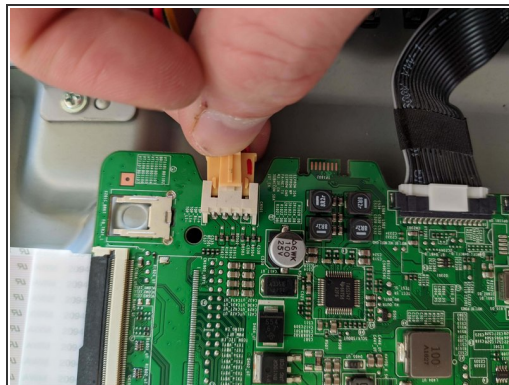
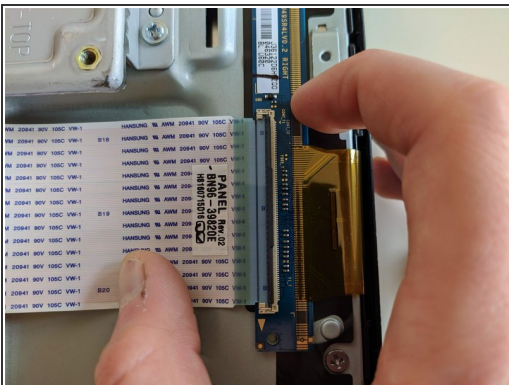
- Insert the screwdriver flat into the side of the TV (parallel to the TV panel). When the screwdriver is turned, the clips of the cover come loose. Repeat all the red clips like this.
- The top of this TV is completely or partially fixed with double-sided tape. use the screwdriver to make room to cut the tape
- Place something between the back and the frame to prevent the panel from getting stuck again.
- Finally, release the yellow clips. Work towards this from the top and do not insert the screwdriver further than 25mm. Do not insert the screwdriver below the yellow marked clips

Step 6 — Rear Removal continued



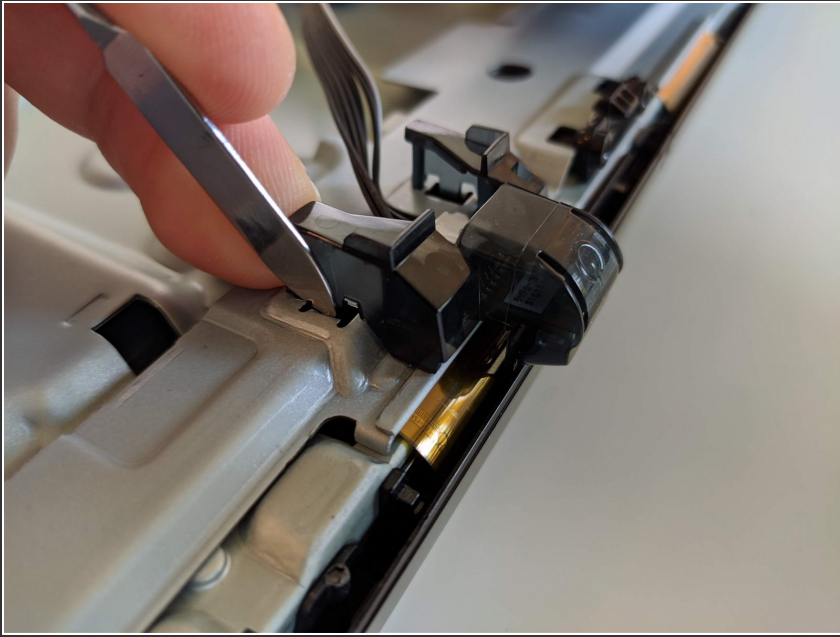
- Release the four blue clips on the bottom by inserting a screwdriver and popping up the rear panel.
- The back panel should now be loose except for the two green clips. When you are sure that all clips are loose along the edge, you can carefully force the back loose.

Step 7 — Remove the speakers



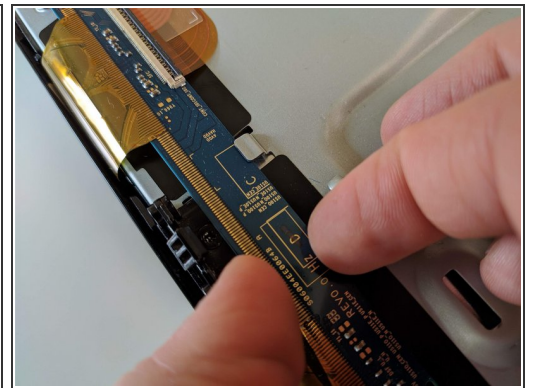
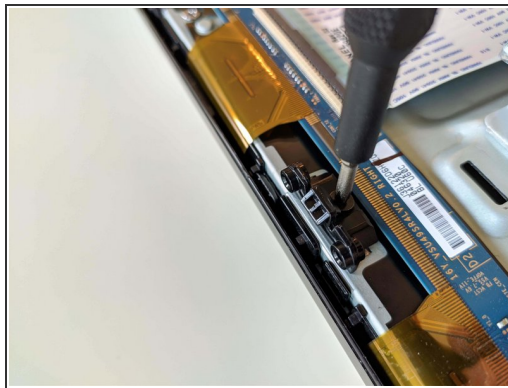
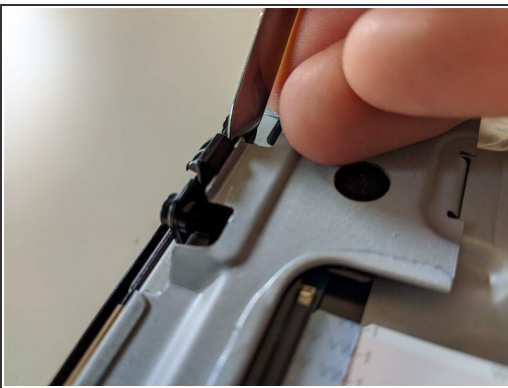
- Disconnect the two flat cables from the LCD panel.
- Disconnect the cables from the speaker
- Carefully pull the speaker off, it is secured with blue rubber plugs.

Step 8 — Remove the infrared module



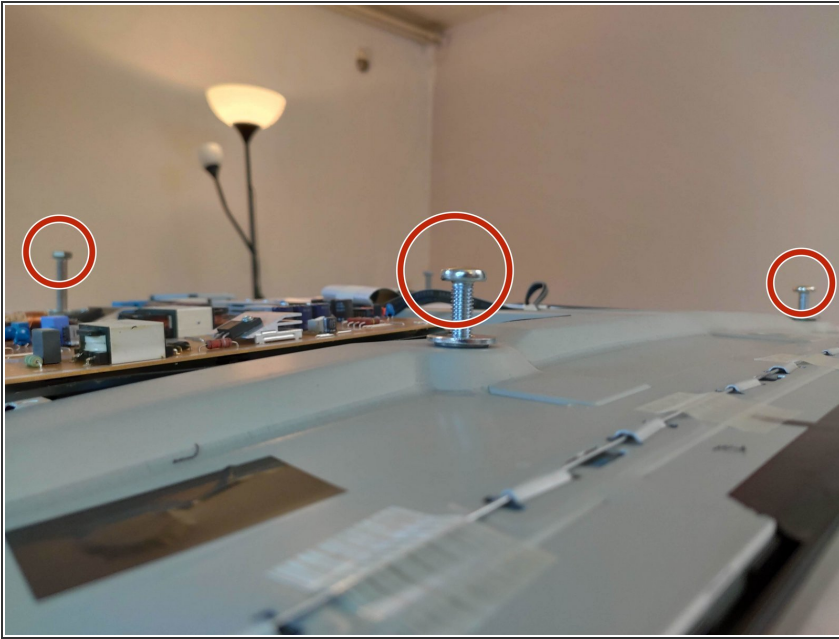
- Disconnect the cable from the infrared module.
- Release the clips from the infrared module and remove the infrared module.


Step 9 — Detaching the LCD panel



- Release the four clips at the bottom of the protective metal plate.
- Remove the metal panel by tilting it and pulling it away.
- Unscrew the four clips.
- Tilt the circuit and release the circuit from under the metal clips.

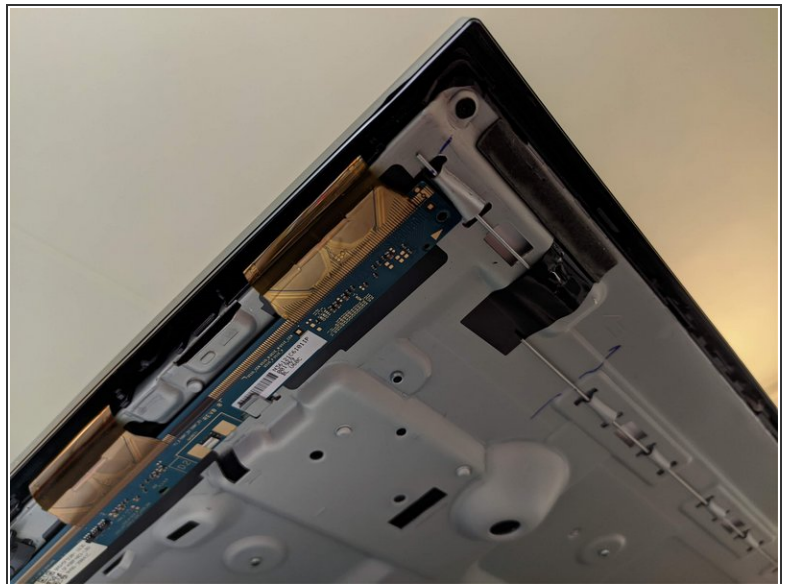
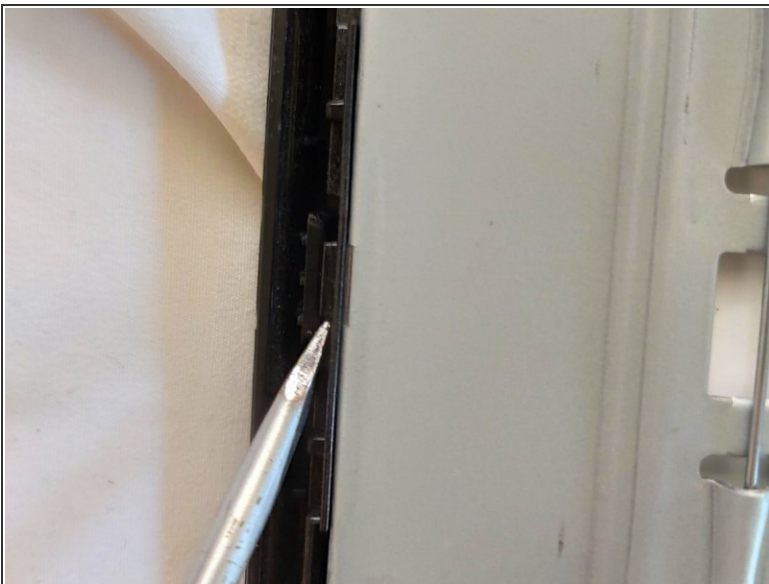
Step 10 — Preparing to turn television around



 Note that the plastic edge keeps the LCD in place. Make sure it has not come off when removing the back cover.

- Screw four bolts into the back. These will support the TV and prevent the TV from leaning on any crucial components.
- Now turn the TV over so that it is facing up.

Step 11 — Remove bottom edge



- Place the TV towards the edge of the table so that the bottom edge of the TV can be reached.
- The bottom edge is secured with plastic clips. Loosen it carefully all around. Take extra care with the gold-colored cables of the LCD.
- When the clips are loose all around, the edge can be removed.

This document was generated on 2021-02-20 04:25:34 AM (MST).

Step 12 — Remove the LCD



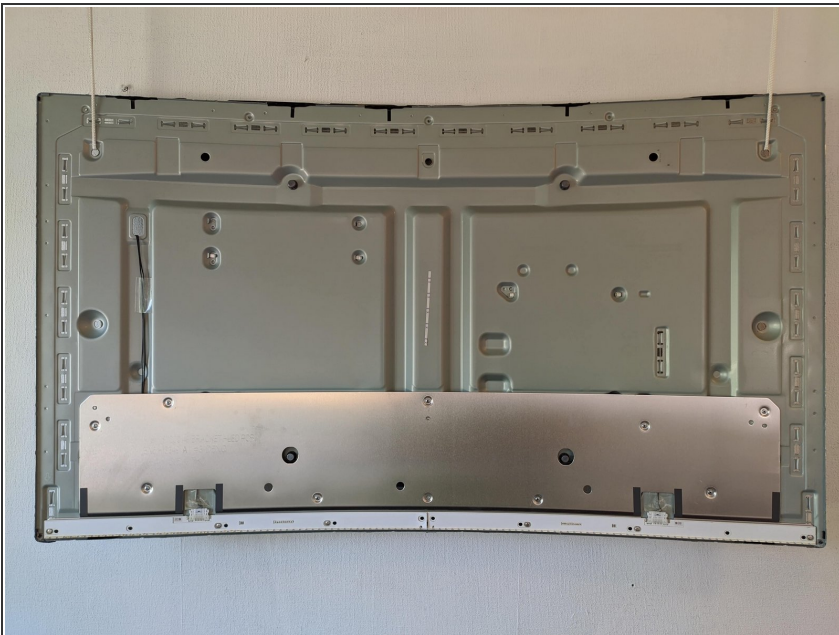
- ⚠ The LCD panel is very sensitive. Pay close attention to the circuit vaporized on the LCD.
- ⓘ There are several ways to remove the LCD, the method below was successful for the writer.
 - Tape the LCD panel securely to the back with masking tape. Do not stick the tape over the golden connectors, but stick it between the connectors.
 - Prepare a mattress topped with a blanket folded to follow the curve of the TV.
 - Now that the LCD is properly secured, the TV can be turned over on the mattress with blanket.
 - Now loosen the tape and move the LCD circuit away from the frame.
 - Use the previously installed bolts to lift the frame away from the TV.
- ⚠ To prevent the LCD from getting stuck in the casing, it is smart to tilt the frame away.

Step 13 — Remove the backlight panel



- Detach the plastic sides from the backlight. These must be pulled up.
- Mark the sides to make reinstallation easier.
- When all sides are removed, the plates of the backlight can be taped together.
- Lift the plates off the TV.

Step 14 — Remove backlight



- Unclip the connector by squeezing on both sides.
- Loosen the screws from the backlight.
- The backlight now can be removed.

To reassemble the device, follow these instructions in reverse order.

