



# Zoll Impact Uni-Vent 731 Power Knob Kit Replacement

Use this guide to replace the power knob in the Zoll Impact Uni-Vent 731 ventilator.

Written By: Emily



## INTRODUCTION

This information can be found on page 29 of the Zoll Impact Uni-Vent 731 Ventilator Guide on the iFixit page for the ventilator. This is a simple repair that can be done on this model of Zoll ventilator and should be done whenever there is damage to the power knob.



### TOOLS:

- [Phillips #0 Screwdriver](#) (1)



### PARTS:

- [Ramset SCREW 6-32X1-1/12 401406](#) (1)

## Step 1 — Power Knob Kit



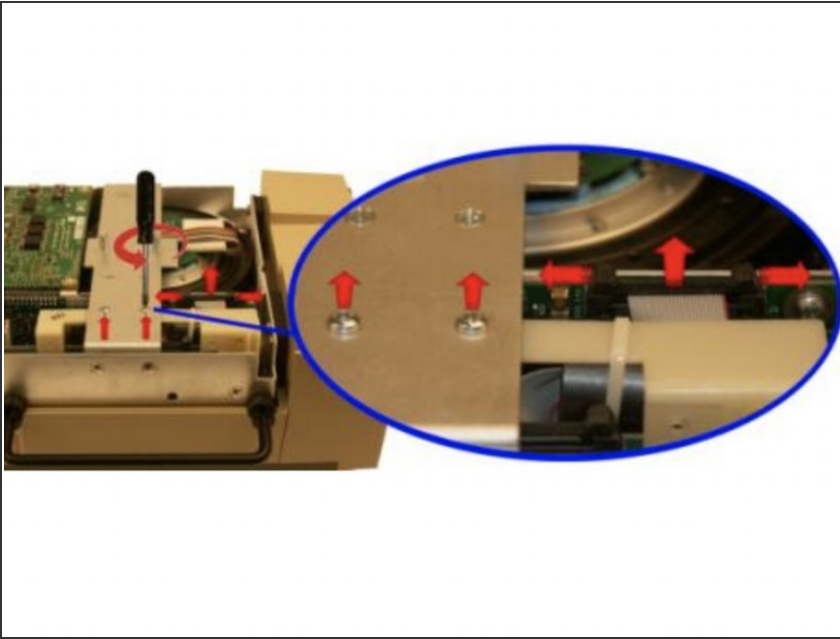
- Loosen but do not remove the (4) 8-32 X 3 screws on the outer air intake
- Pg. 29

## Step 2



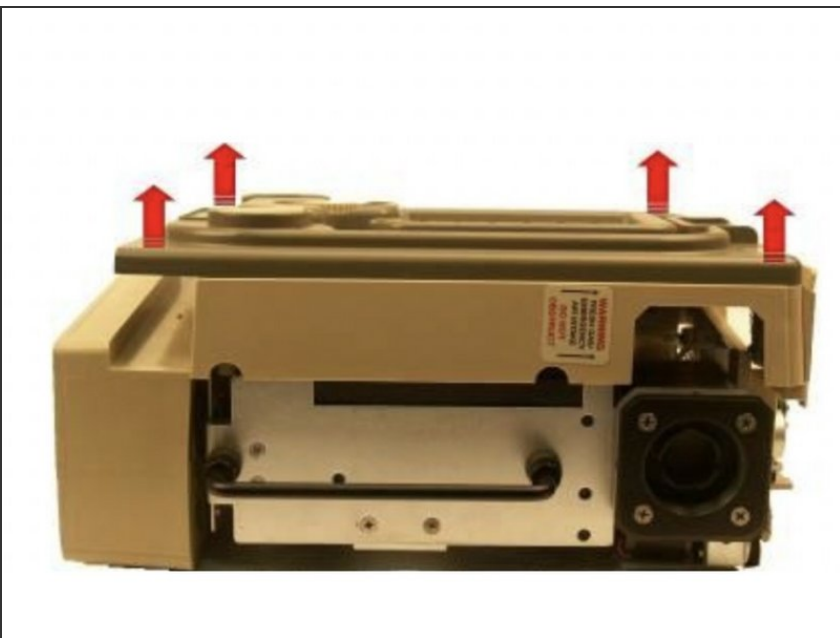
- Loosen and remove the (2) 10-32 Keps nuts and the (4) 6-32 X 2 screws. Remove the back case by lifting from the ventilator
- Pg. 29

## Step 3



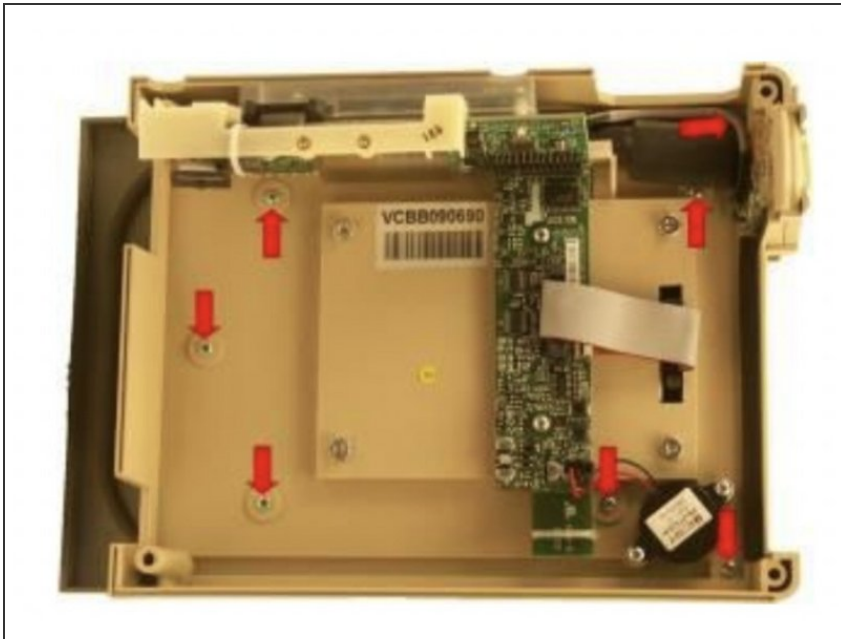
- Remove the (2) 4-40 X 1/4 screws on the Dovetail Mounting Bracket and disconnect the ribbon cable on the PIM PCB by simultaneously applying pressure on the two locking “ears”
- Pg. 29

## Step 4



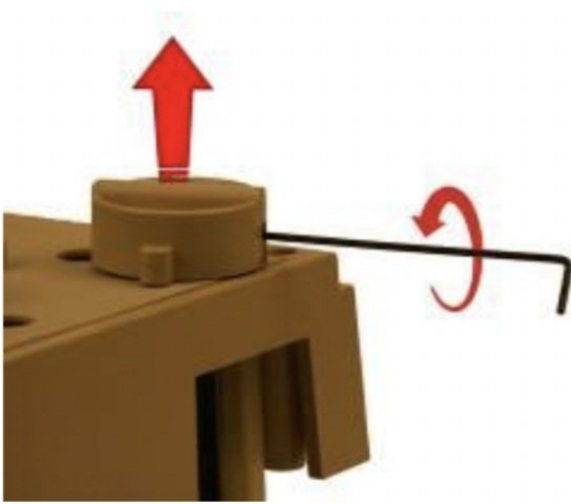
- Flip the ventilator over and remove the front case assembly by lifting it straight up away from the ventilator module
- Pg. 29

## Step 5



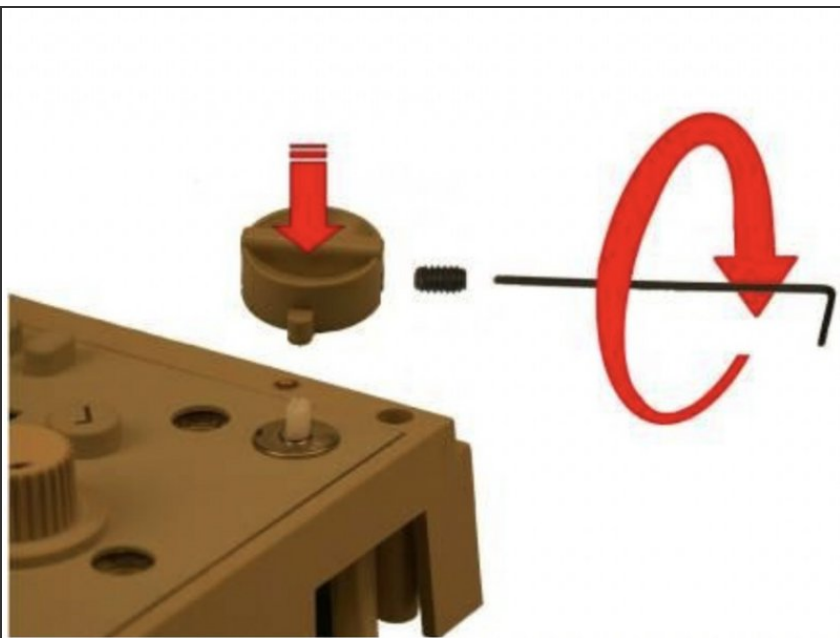
- Remove the bezel by loosening and removing the (7) 4-40 X 1/4 screws that hold the bezel to the front case
- Pg. 29

## Step 6



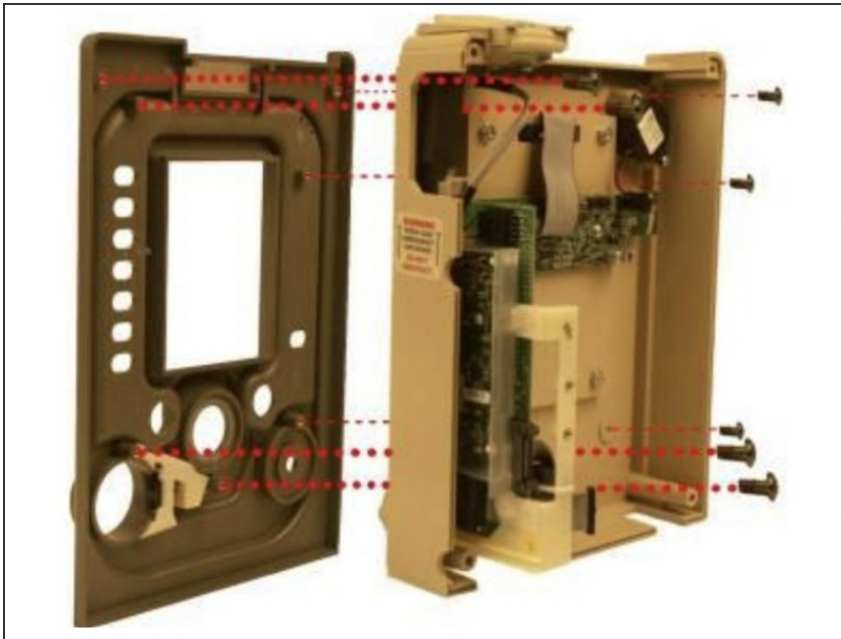
- On the membrane panel assembly, loosen the 6-32 X 1/4 set screw using a 1/16 Ball Hex Driver (located in the power knob) and lift the damaged knob from the membrane panel
- Pg. 30

## Step 7



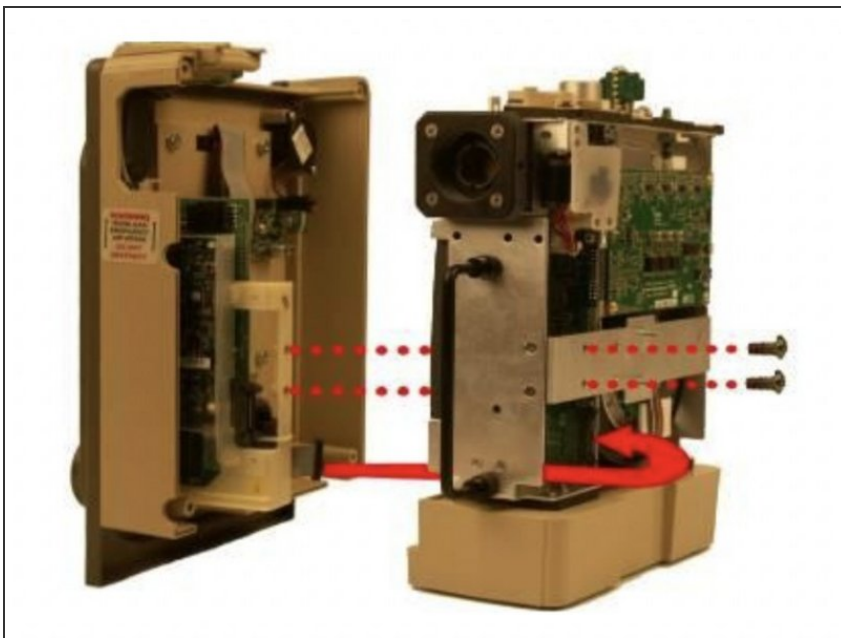
- Place the replacement knob on the membrane panel switch -align with flat on switch –insert the included 6-32 X 1/4 set screw and tighten
- Pg. 30

## Step 8



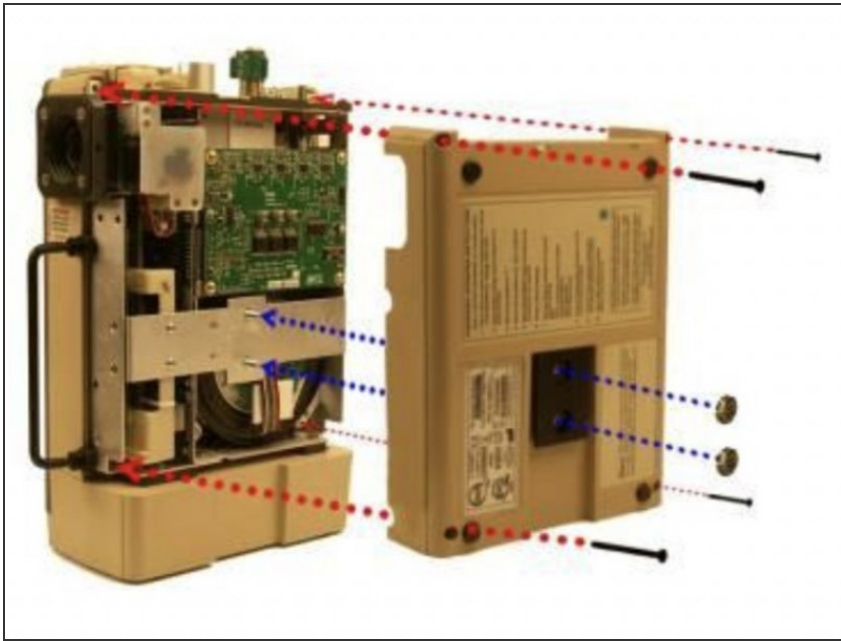
- Install the new bezel by tightening the included (7) 4-40 X 1/4 screws
- Pg. 30

## Step 9



- Place the front case assembly over the vent module and tighten the (2) 4-40 X 1/4 screws unto the dovetail mounting bracket. Reconnect the ribbon cable unto the PIM PCB. Make sure the two locking “ears” lock into position
- Pg. 30

## Step 10



- Attach the back case to the vent module and align cover with handle, air intake housing and dovetail mounting studs. Insert and tighten the included (2) 10-32 Keps nuts and the (4) 6-32 X 2" screws

- Pg. 30

## Step 11



- Tighten the (4) 8-32 X 3 screws on the outer air intake

- Pg. 30

## Step 12



- Perform HiPot Testing then perform Calibration and Functional Test using the RCS
- Pg. 30

To reassemble your device, follow these instructions in reverse order.