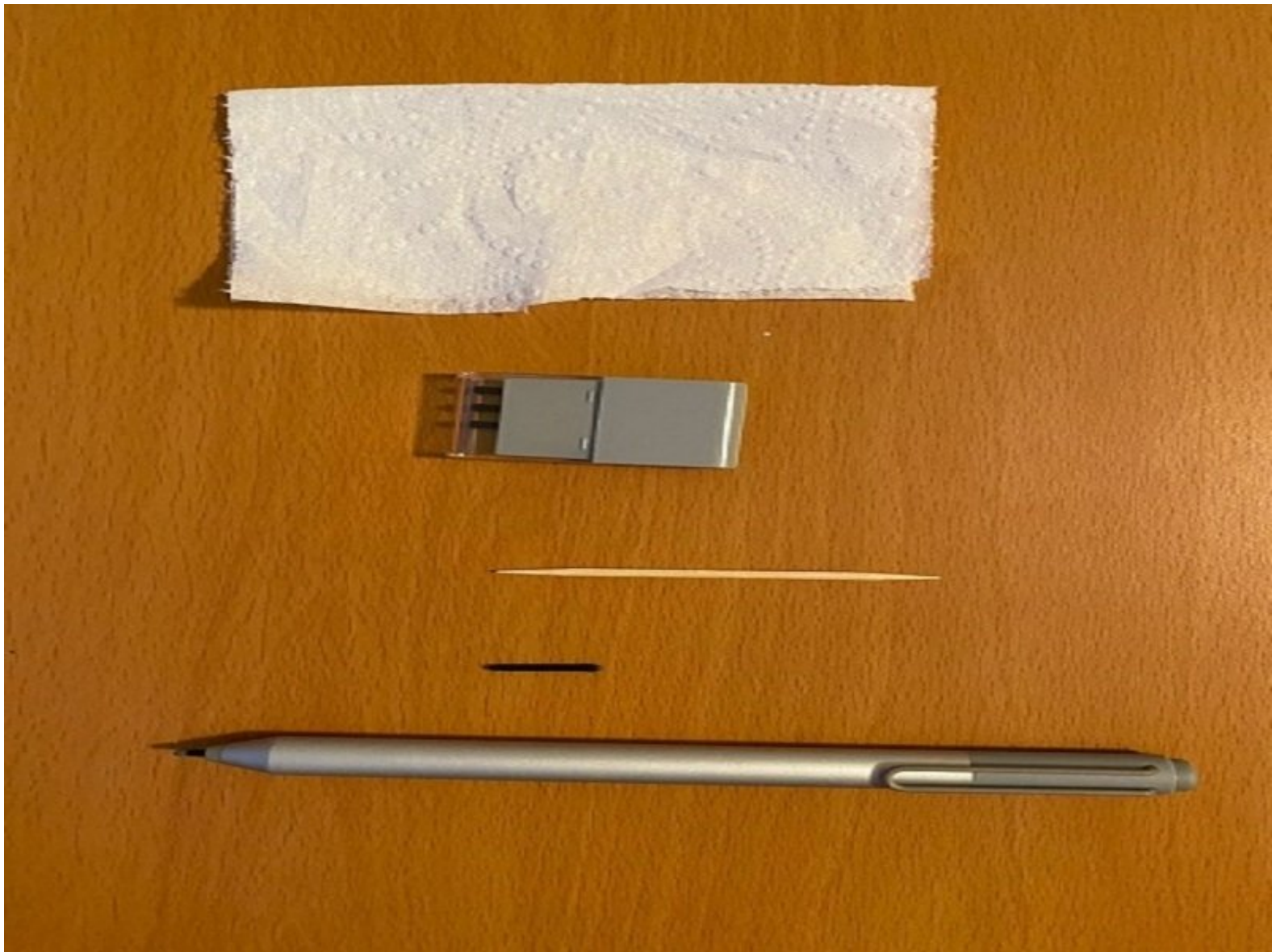




Microsoft Surface Pen Tip Replacement

Replacing Microsoft Surface pen tip.

Written By: Junseok Baek



INTRODUCTION

This pen is Microsoft Surface pen (**3UY-00001**). It is really easy to get break especially tip. If you are trying to buy a new Microsoft Surface pen, it will be over \$100. But if you know how to replace this tip, it's only \$20! check this out how to replace this tip. This pen is the same as Bluetooth, so it may not work properly if you touch it incorrectly. This is really easy if you follow the steps.



TOOLS:

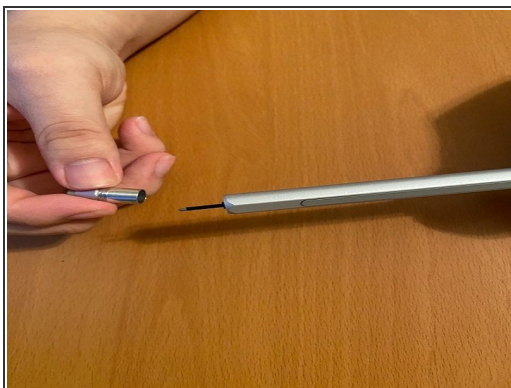
- [Microsoft pen tip kit](#) (1)
- [Toothpick](#) (1)
- [Tissue](#) (1)

Step 1 — Tip




- Order the Microsoft Surface Pen tip replacement kit.
- Hold your pen at an angle and unscrew the top part of the pen.

Step 2



- Extract the tip now that it is fully exposed.

 When you extract the tip, make sure don't do it too hard. The inside of the pen can be broken.

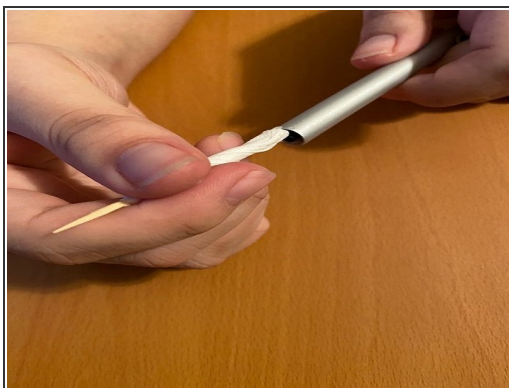
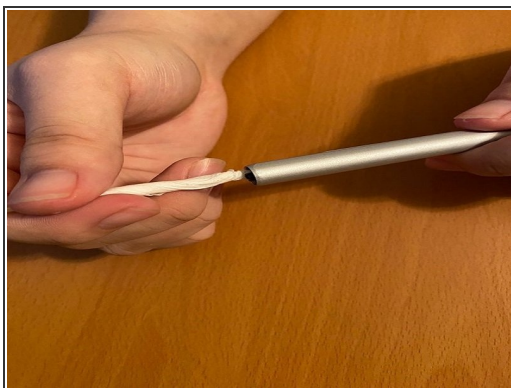
Step 3



- After you extract the tip, roll the tissue on toothpick.

i I recommend cutting the tissue in half.

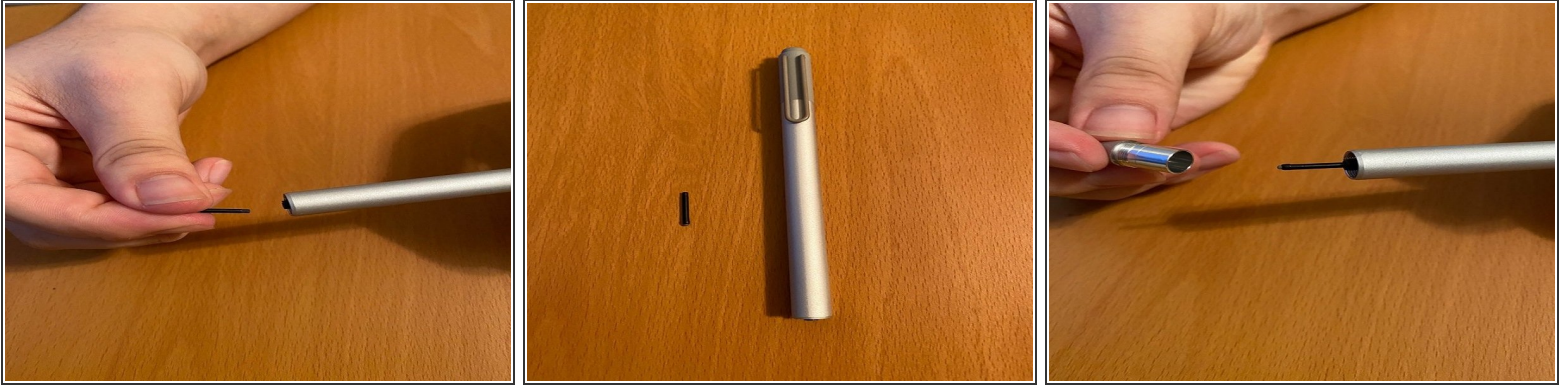
Step 4



- Clean the inside of the top detachable part of the pen with a toothpick covered with tissue.

i Make sure there is no residue on the edge.

Step 5



- Choose the tip that you would like to use and insert in a hole.

Step 6



- Screw the detachable part of the pen back on.

To reassemble your device, follow these instructions in reverse order.