



# IBM ThinkPad 365XD CD Drive Replacement

How to replace your IBM Thinkpad 365XD CD Drive.

Written By: Rubix\_Cube





## TOOLS:

- [Phillips #0 Screwdriver](#) (1)
-

## Step 1 — Getting Inside the Thinkpad



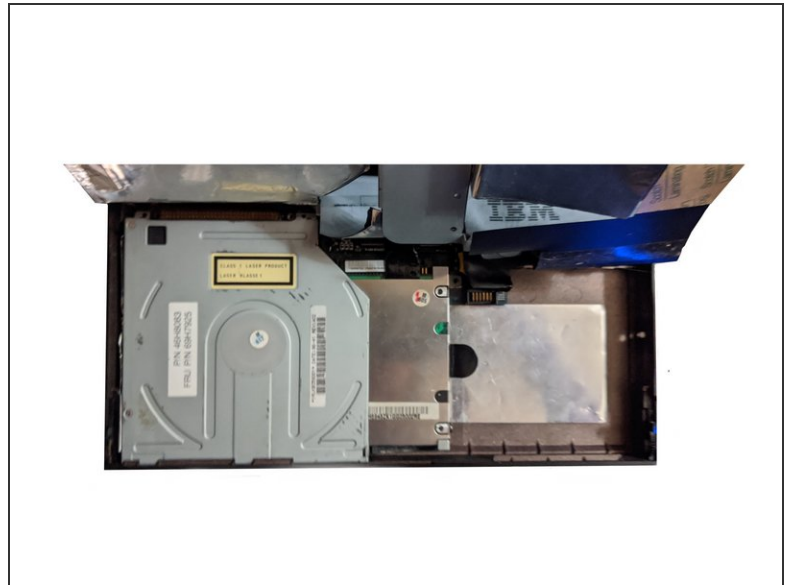
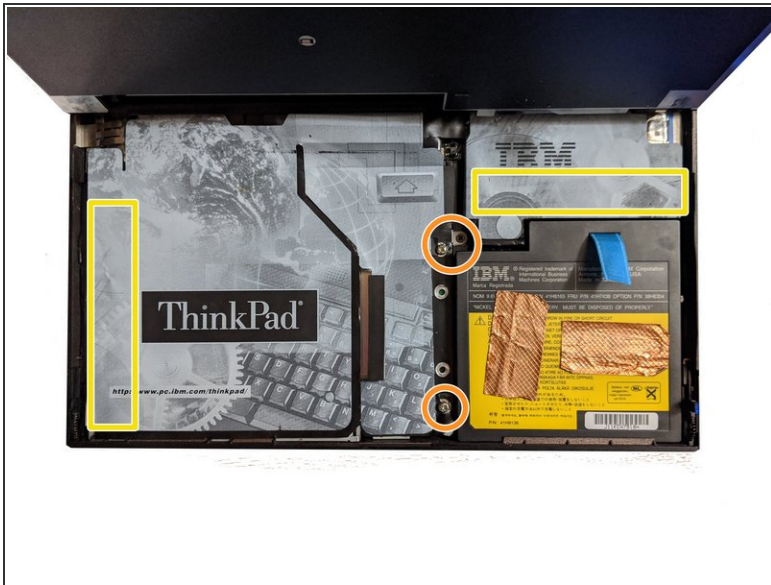
- Using both latches on the left and right side of the Thinkpad, lift up the screen.
- Again using both latches, push them back while pushing the keyboard up till it pops up, then lift the keyboard up. You may need to use a little force.

## Step 2 — Removing the Battery



- Lift the battery using it's cloth pull tab and lift it out of the ThinkPad. Set it aside.

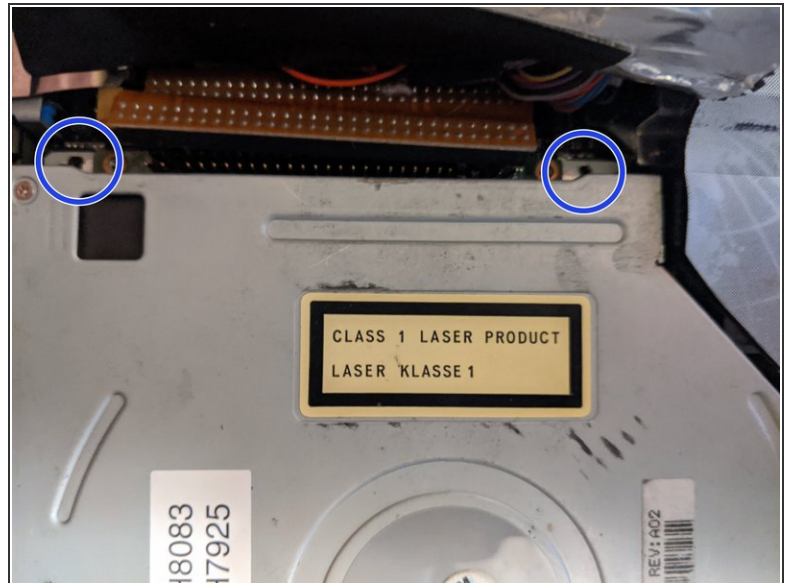
### Step 3 — Removing Screws/Lifting Cover



- Remove the following screws, there should be 3. Two of the screw spots may be slightly different on yours.
- The cover has adhesive on it at these spots, pull it slowly till the adhesive releases. Then lift the cover up, you may need to hold it.
- ⓘ Keep track of the screws, the one that holds the drive to the board and cover is small, so don't lose it!

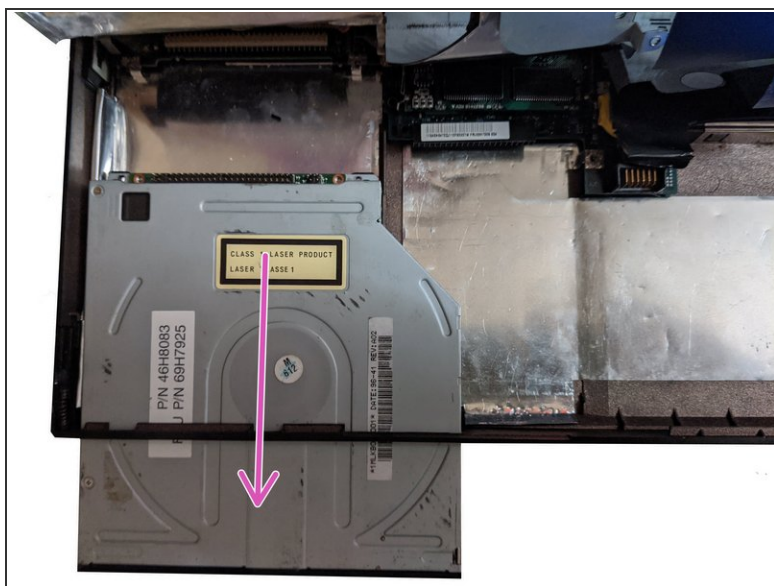


## Step 4 — Removing CD Drive Screws/Cable



- Disconnect or remove the cable located above the drive, be careful as the cable is fragile.
  - ⓘ You may use a flat head screwdriver or plier to remove the cable easier. Lightly push/lift up both sides of cable then pull it off.
- Your drive should have 2 screws holding it down, remove them. They are small so keep track of them!

## Step 5 — Removing The CD-Drive



- Slide the drive down till it is out of the ThinkPad.
- ⓘ The ThinkPad uses a proprietary IDE connector, so not just any CD-Drive will work. **Models that will work: Teac CD-44E, CD-46E, CD-48E.**

To reassemble your device, follow these instructions in reverse order.