



How to open the Huawei Watch GT

How to open your Huawei Watch GT for repairs.

Written By: Dominik Schnabelrauch



INTRODUCTION

Use this guide to open your Huawei Watch GT for repairs.

TOOLS:

- [T3 Torx Screwdriver](#) (1)
 - [iFixit Opening Picks set of 6](#) (1)
-

Step 1 — How to open the Huawei Watch GT



- Before you begin, take your watch off the charger and power it down.
- Remove the watch band.

Step 2




- Remove the four Torx T3 screws (3.65 mm length).


Step 3



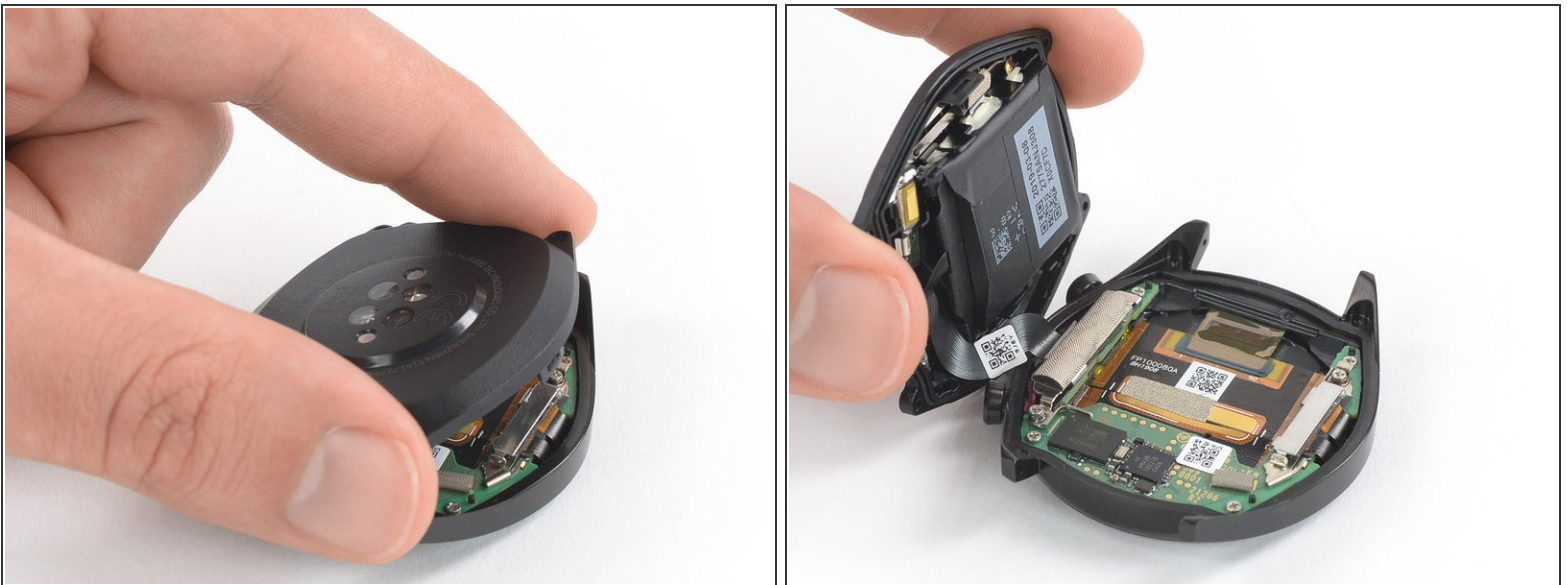
- Insert an opening pick into the notch at the top edge of the back cover.

 Do not insert the opening pick deeper than 1 cm (1/3rd of an inch) to avoid damage to other components.

- Use the opening pick to pry up the back cover of the Huawei Watch GT.

 Do not remove the back cover assembly all the way yet—it's still connected to the mainboard.

Step 4



- Carefully fold the back cover assembly to the side of the two watch crowns.

To reassemble your Huawei Watch GT, follow these instructions in reverse order.

Opening didn't go as planned? Check out our [Answers community](#) for troubleshooting help.