



How to Fix a Dead Key on a Yamaha PSR-280 Piano Keyboard

If you need to replace a key on your Yamaha...

Written By: Sydney Schuett



INTRODUCTION

If you need to replace a key on your Yamaha PSR-280, follow this guide. This fix deals with a contact pad. A contact pad is what the piano key hits that sends a signal to the speakers to make that certain note play. When the keyboard is not stored properly, dust can accumulate between the key and the contact pad making the key not work.

TOOLS:

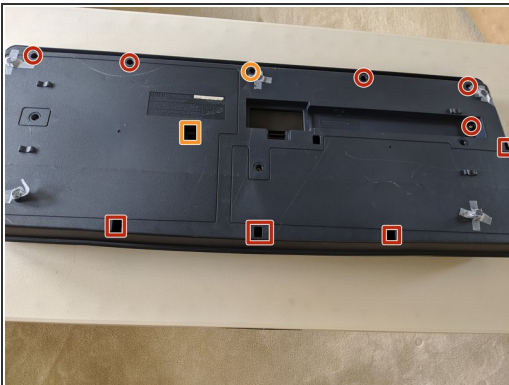
- [Small Phillips Head Screwdriver](#) (1)
 - [Vacuum Extension Wand](#) (1)
 - [Microfiber Cleaning Cloths](#) (1)
-

Step 1 — How to Fix a Dead Key on a Yamaha PSR-280 Piano Keyboard



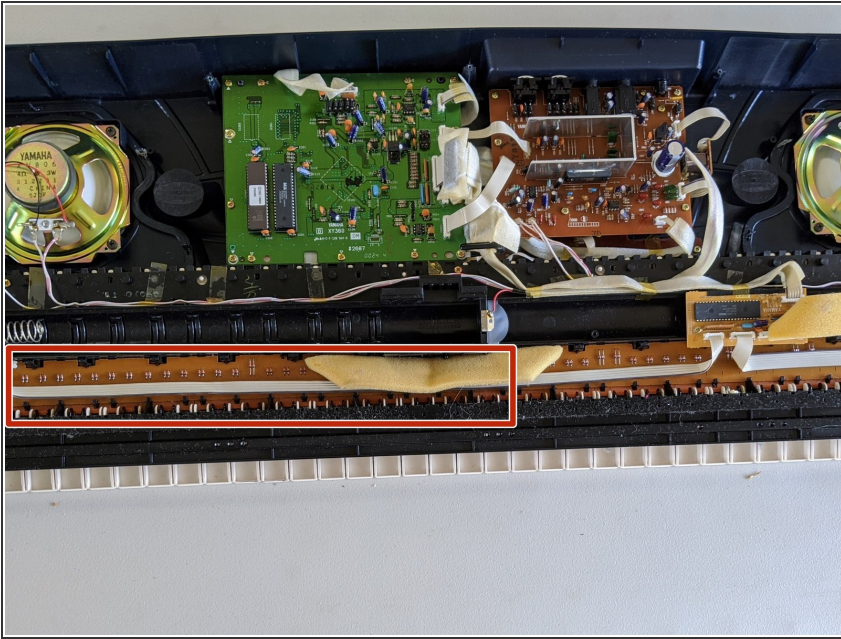
- Unplug the cord from the wall and the back of the keyboard.

Step 2



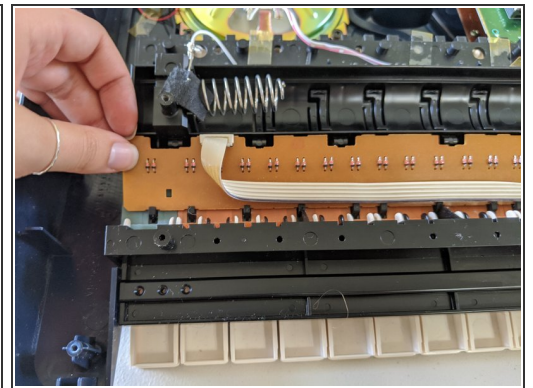
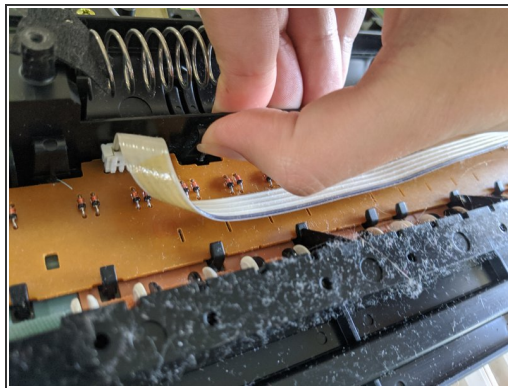
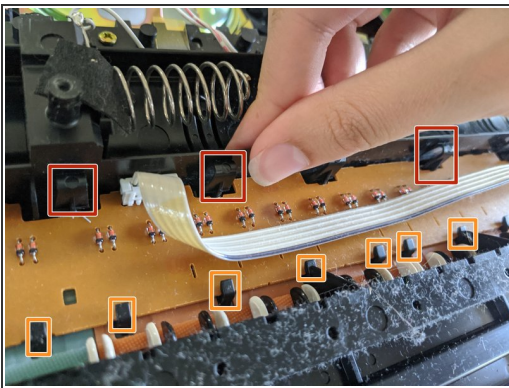
- Flip over the keyboard.
- Check the battery holder and remove the battery cover.
- Remove all outer screws with a Philips screwdriver. These are the 19.0 mm Philips screws.
- Remove the middle screw and the middle top screw. They are the 25.4 mm Philips screws.

Step 3



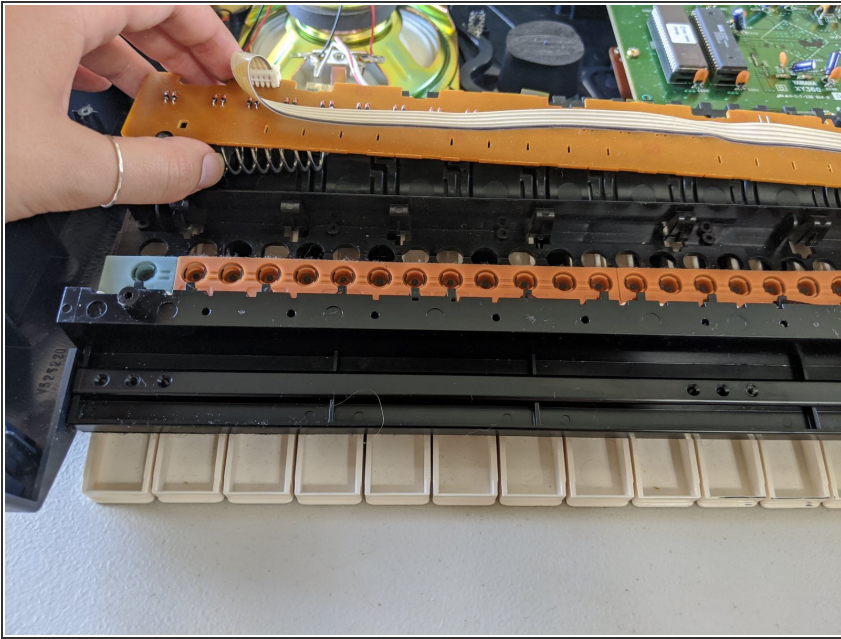
- Carefully remove the cover, and set it aside.
- Find the contact pad.

Step 4



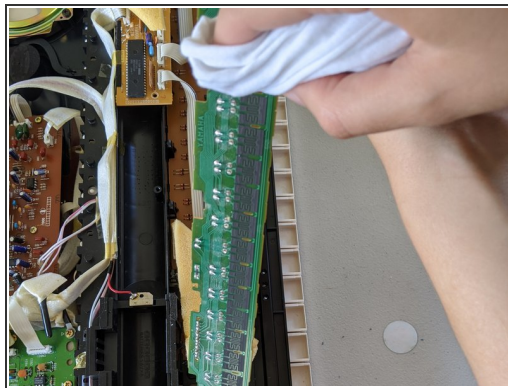
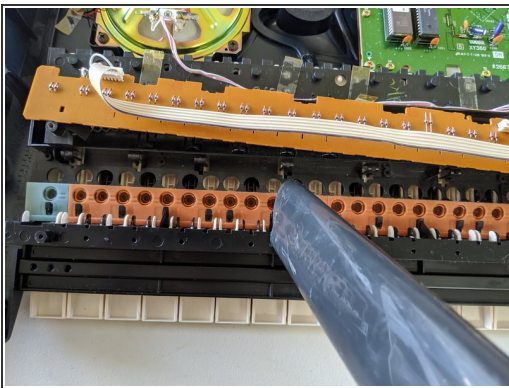
- At the top of the contact pad, carefully pinch the black clamps closed.
- Once all the clamps are closed, wiggle the contact pad free.
- Be careful of the small black hooks at the bottom.

Step 5



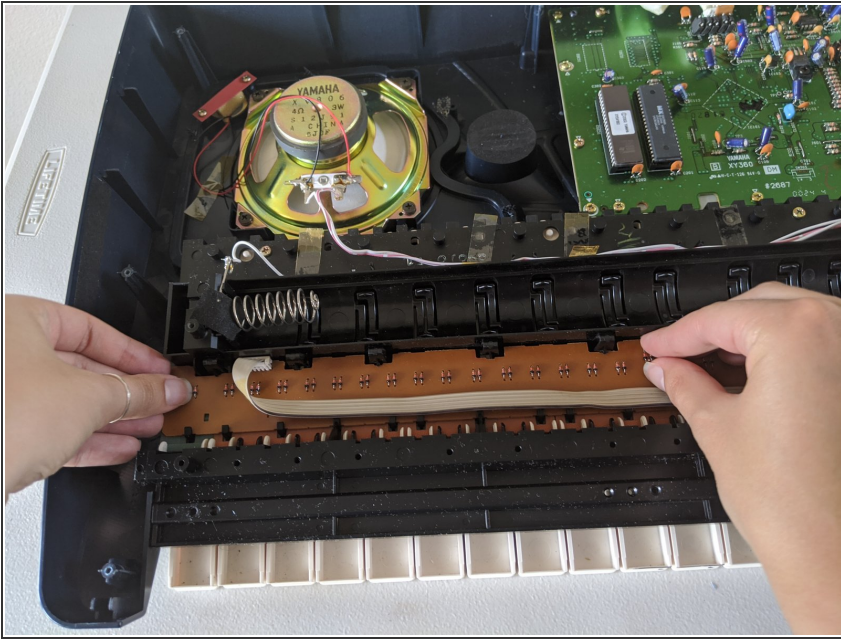
- After the contact pad is free, gently lift it up.

Step 6



- Vacuum and/or gently wipe the dust away.

Step 7



- Place the contact pad back gently.

Step 8



- Place the cover back on.
- Place the screws back in.
- ☑ The 25.4mm Philips screws go in the middle and top middle. The 19mm screws go around the case.

To reassemble your device, follow these instructions in reverse order.