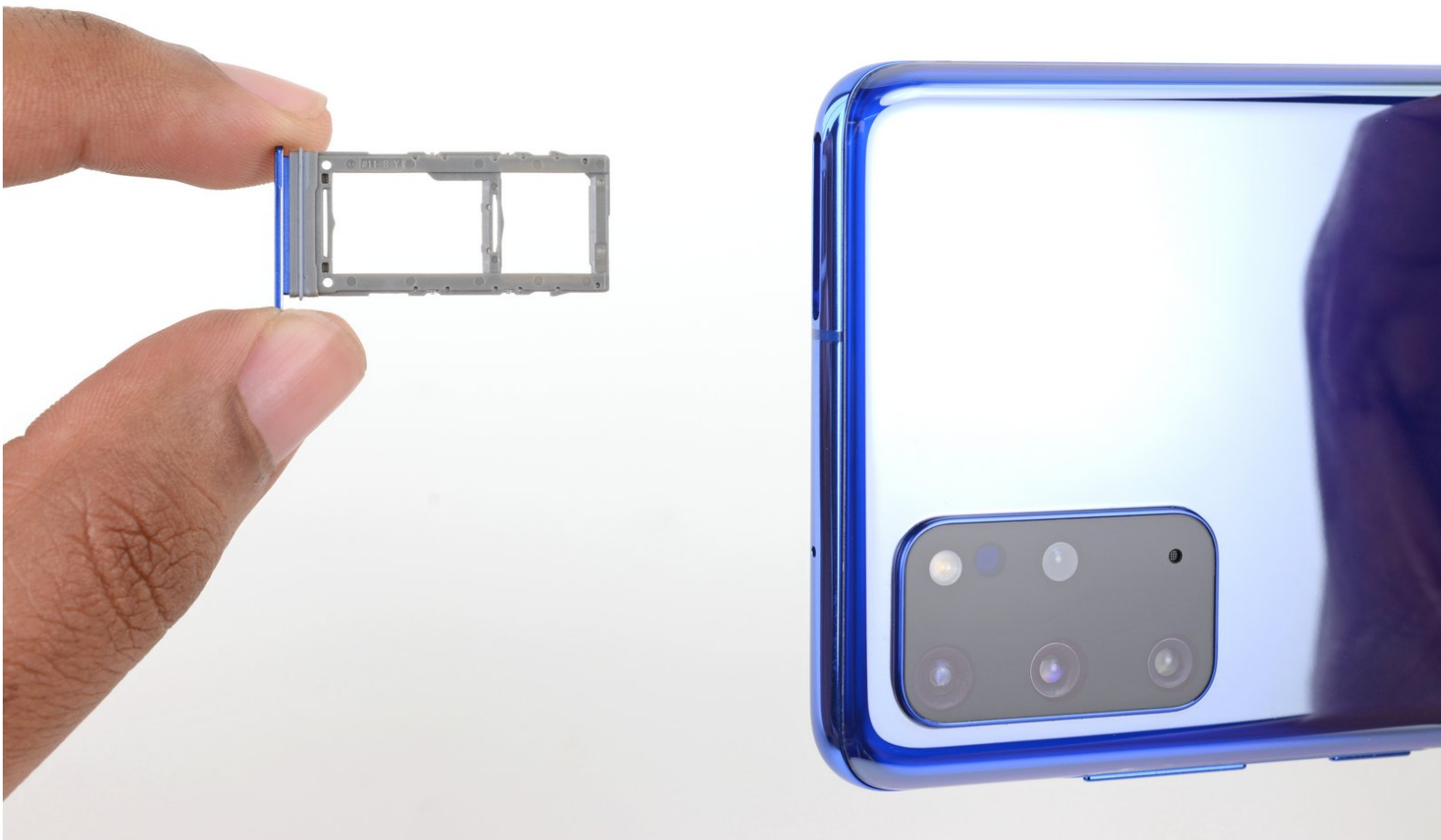




Samsung Galaxy S20 Plus SIM/MicroSD Card Tray Replacement

The Galaxy S20 Plus has a hybrid SIM card tray....

Written By: Tarun Thiruma



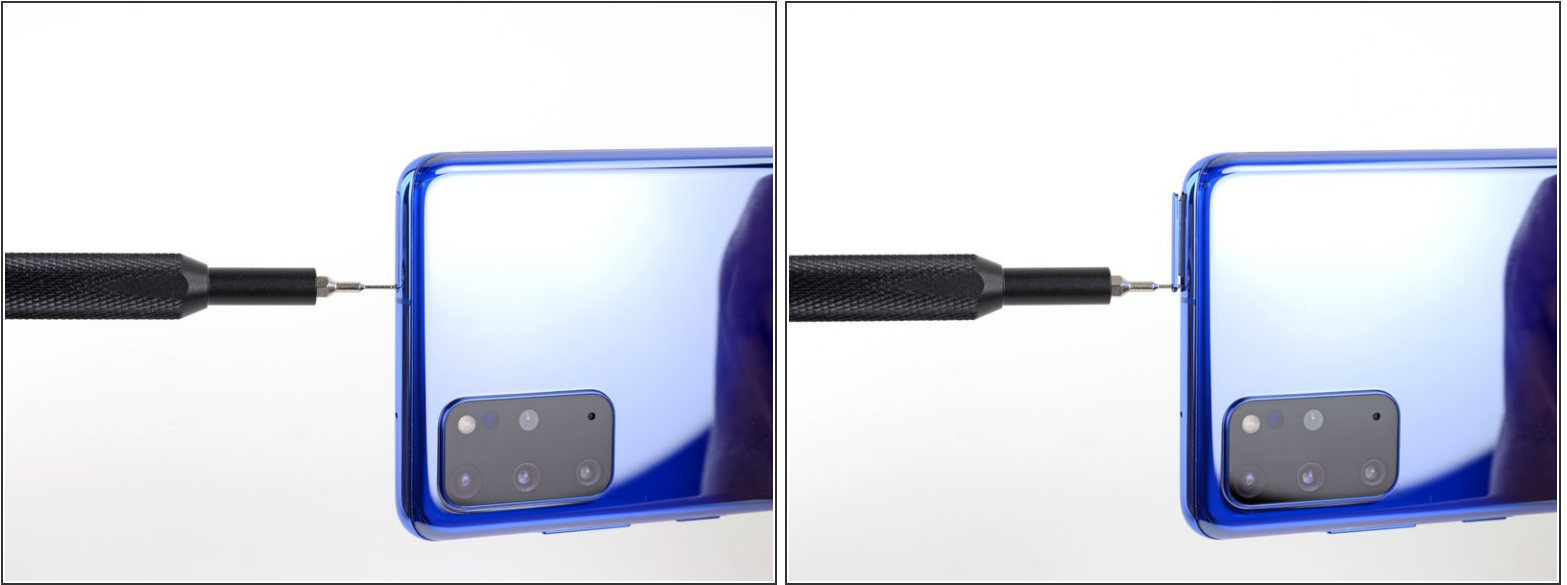
INTRODUCTION

The Galaxy S20 Plus has a hybrid SIM card tray. Ejecting this tray allows you to replace the nano SIM card, add a MicroSD memory card, or add a second nano SIM card (certain models only).

TOOLS:

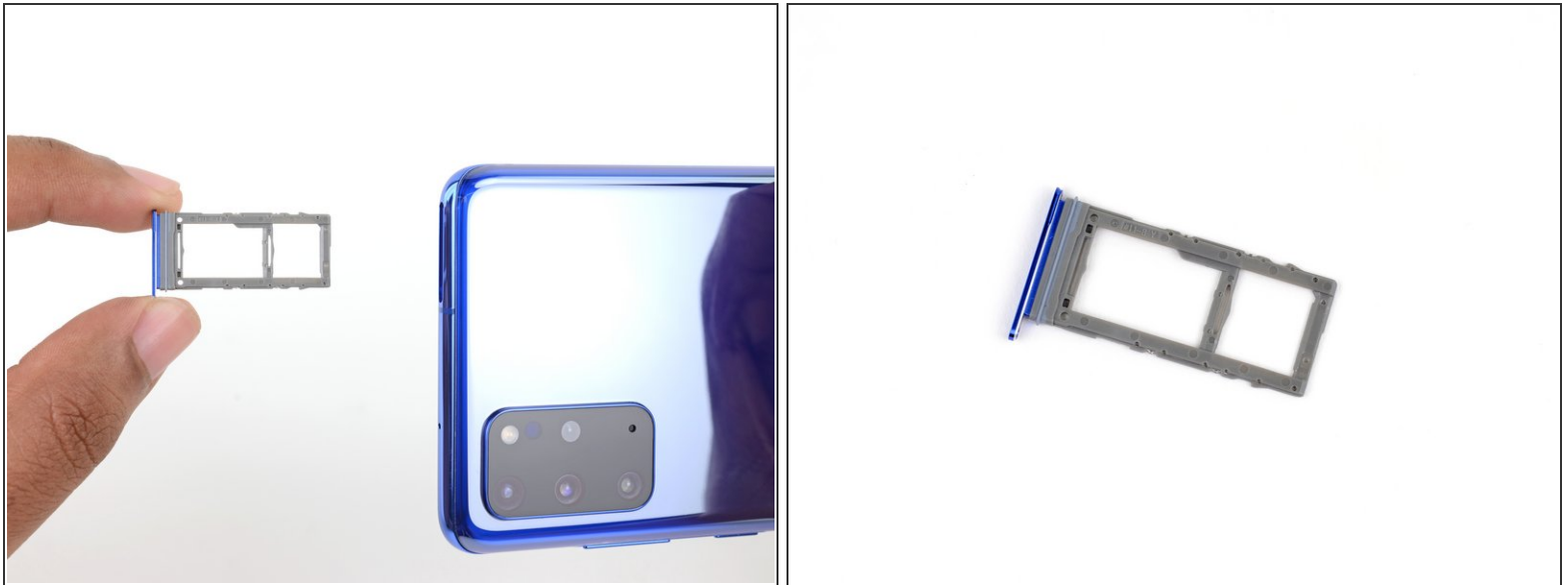
- [SIM Card Eject Tool](#) (1)
-

Step 1 — Eject the SIM tray



- Insert a SIM card eject tool, bit, or a straightened paperclip into the hole on the SIM tray, located at the top edge of the phone next to the plastic antenna band.
 - ⓘ If you inserted the tool [into the other hole](#), don't worry—the microphone and the ingress gasket are mounted out of harm's way.
- Press in firmly to eject the tray.

Step 2 — Remove the SIM tray



- Remove the SIM card tray.
 - ❗ The SIM card will fall out of the tray easily.
- 🔧 When you reinsert the SIM card, ensure that it is in the proper orientation relative to the tray.
- 🔧 A thin rubber gasket around the SIM tray provides water and dust protection. If this gasket is damaged or missing, replace the gasket or the entire SIM tray to protect your phone's internal components.

Compare your new replacement part to the original part—you may need to transfer remaining components or remove adhesive backings from the new part before installing.

To reassemble your device, follow the above steps in reverse order.

After you've completed the repair, [follow this guide](#) to test your repair.

Take your e-waste to an [R2 or e-Stewards certified recycler](#).

Repair didn't go as planned? Check out our [Answers community](#) for troubleshooting help.