



Kitchen Faucet Replacement

Replace a kitchen faucet (single-hole faucet and pull-down spray).

Written By: Bongsu Kim



INTRODUCTION

Use this guide to replace a kitchen faucet (single-hole faucet and pull-down spray).

A simple problem of a kitchen faucet can be fixed by replacing a part or a couple of parts.

- [A faucet that leaks from its neck.](#)
- [A broken kitchen faucet pull-out spray head.](#)
- [How to fix a leaky faucet.](#)
- [How to clean a Kitchen Aerator.](#)

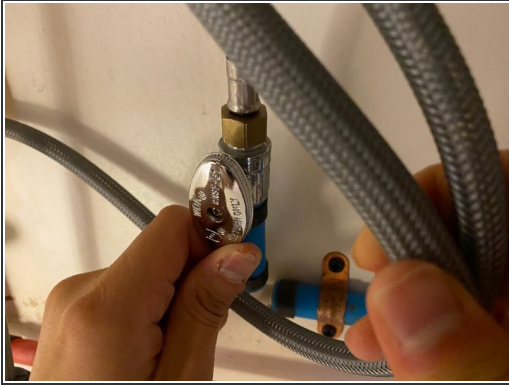
However, if the faucet has multiple problems, such as leakage, a squeaky handle, rust, or low water pressure, it might need to be replaced. If the replacement is done by a plumber, including removing an old faucet and installing a new one, it could cost at least \$150, but the labor fee can be saved by replacing the faucet yourself.



TOOLS:

- [Adjustable Wrench](#) (1)
- [Bucket](#) (1)
- [Cleaning Spray](#) (1)
- [Towel](#) (1)

Step 1 — Kitchen Faucet



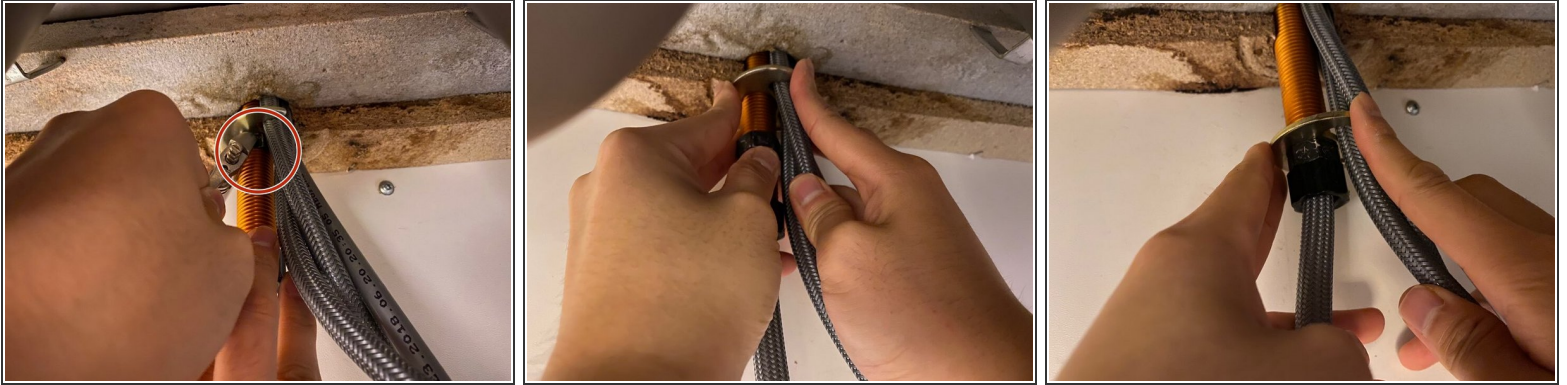
- Rotate the hot and cold water valve knobs under the sink clockwise to turn off the water.
- Turn on the faucet to relieve the pressure and any remaining water for about one minute.

Step 2



- Place a bucket underneath the valves to catch dripping water.
- Turn the hot and cold supply line nuts clockwise until the water supply lines come out.
- ⓘ For a pull-down faucet, disconnect the spray hose from both the spray head and the main body.

Step 3



- Loosen and remove the nuts underneath the sink by using an adjustable wrench.
- Remove the mounting bracket.

Step 4



- Use your hands to pull the faucet out of the sink.
- Clean away any grime or sealant with a cleaning spray and towel.

Step 5



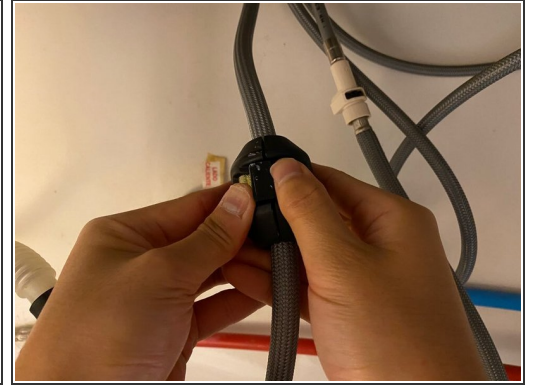
- Place the trim ring on the faucet hole.
- Feed the faucet into the faucet hole and position it.
- ⓘ Different faucets install differently, so be sure to read and follow the instructions for your faucet.

Step 6



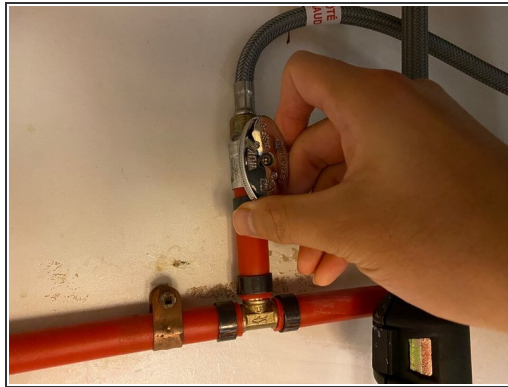
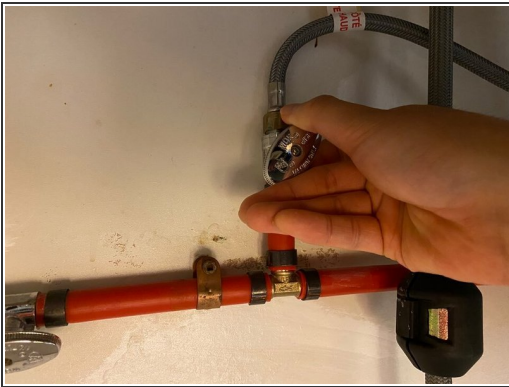
- Underneath the sink, put the mounting bracket back in place, and turn the nuts to tighten them.

Step 7



- Hook the water supply lines up by turning the hot and cold supply line nuts counter clockwise.
- ❗ For pull-down faucets, attach the weight kit on the spray hose and connect it to both the spray head and the pull-out hose.

Step 8



- Rotate the hot and cold water valve knobs counter clockwise to turn on the water under the sink.
- Once it is all done, check if there are any leaks.