



# George Foreman GR-20 Disassembly

This guide will show you the steps to disassemble a George Foreman GR-20.

Written By: Aidan Admadjaja



# INTRODUCTION

If your George Foreman GR-20 (model GR20WHT) has ceased to function properly, then disassembling it is the first step towards diagnosing and fixing your GR-20. Use this guide to walk you through step by step how to completely disassemble your George Foreman GR-20. Before beginning the disassembly process, check to make sure the device is disconnected from any external power source and cool to the touch. Following the necessary safety precautions is important when disassembling. Follow the steps in reverse order for reassembly of your George Foreman GR-20.



## TOOLS:

- [Phillips #2 Screwdriver](#) (1)
  - [1 x Opening Picks](#) (1)
-

## Step 1 — George Foreman GR-20 Disassembly



- Open the grill and remove the two Phillips #2 screws from the top lid.

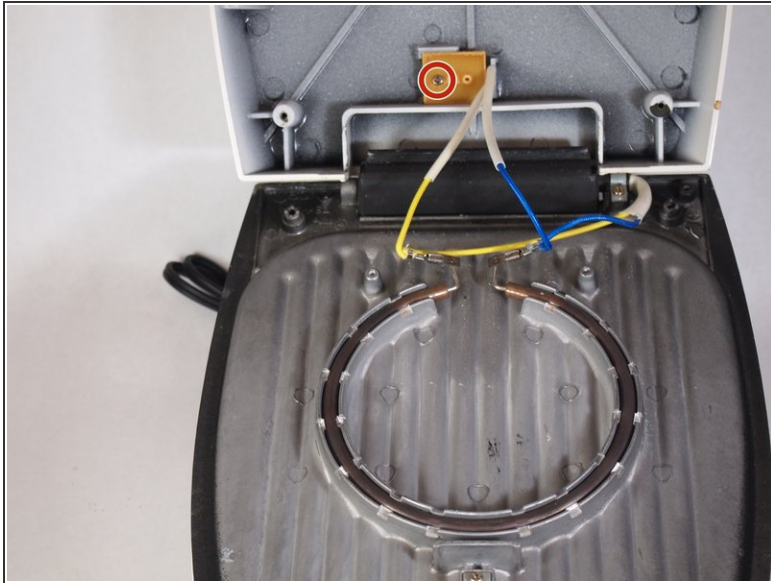
## Step 2



- Using a pick, peel off the model number sticker to expose the two screws underneath. Remove these screws using a Phillips #2 screwdriver.

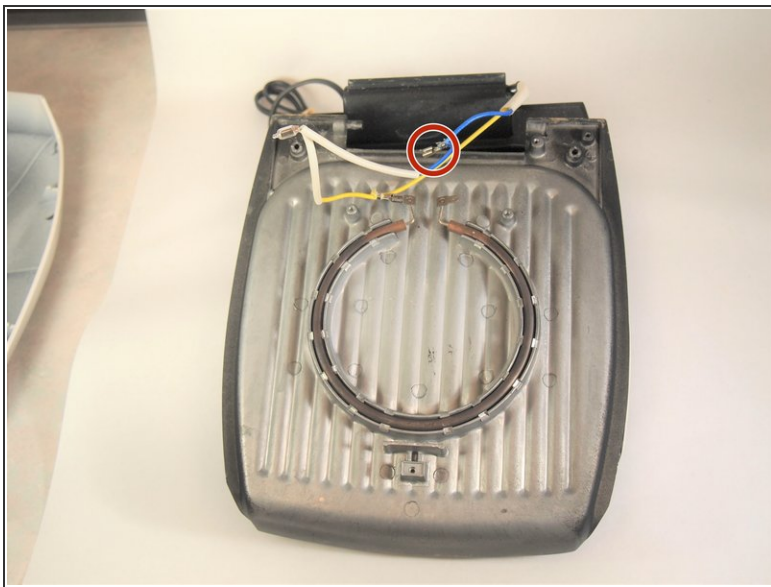


### Step 3



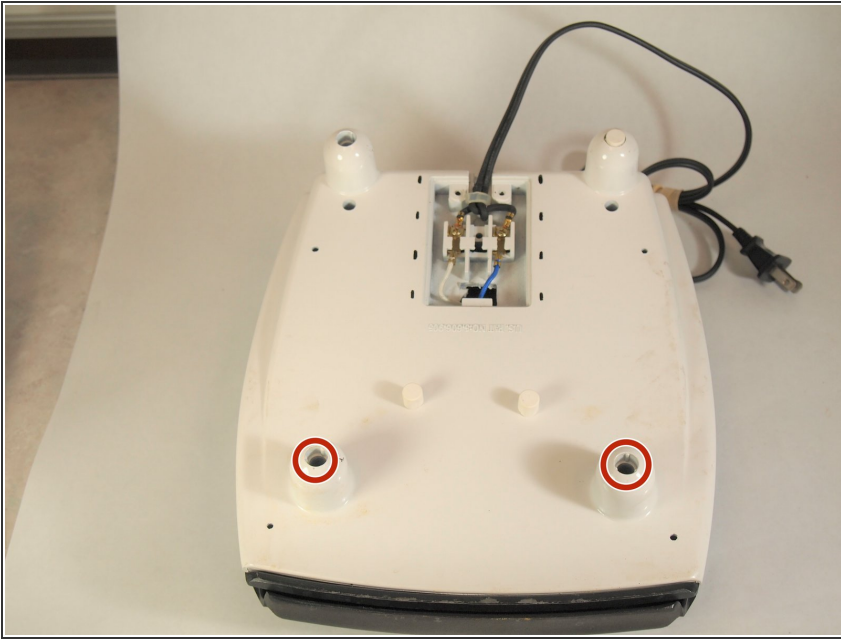
- Remove the Phillips #2 screw from the orange tab.
- Detach the top lid from the bottom of the grill.

### Step 4



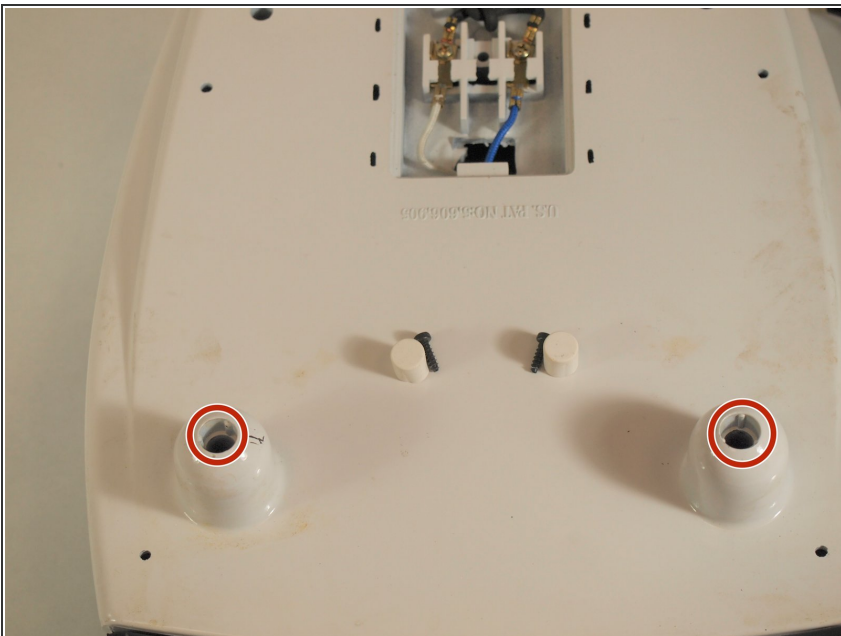
- To measure the resistance of the heating coil, disconnect the blue wire from the heating element.

## Step 5



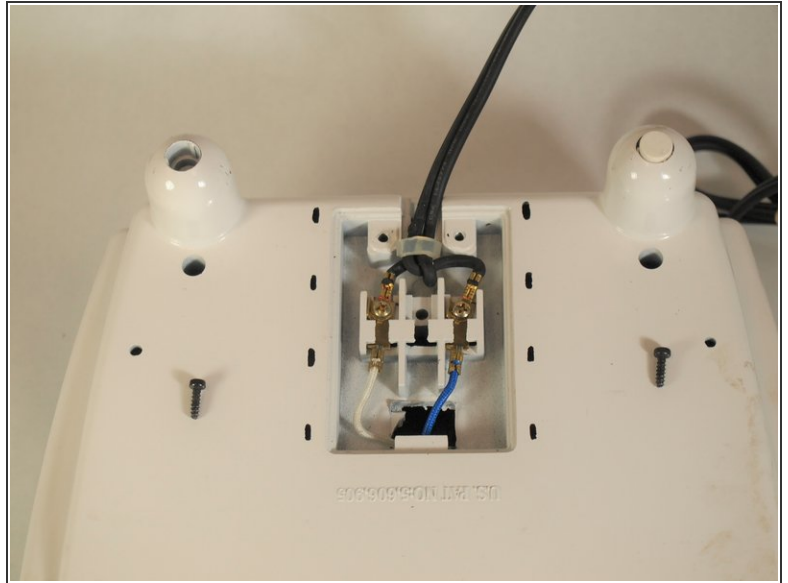
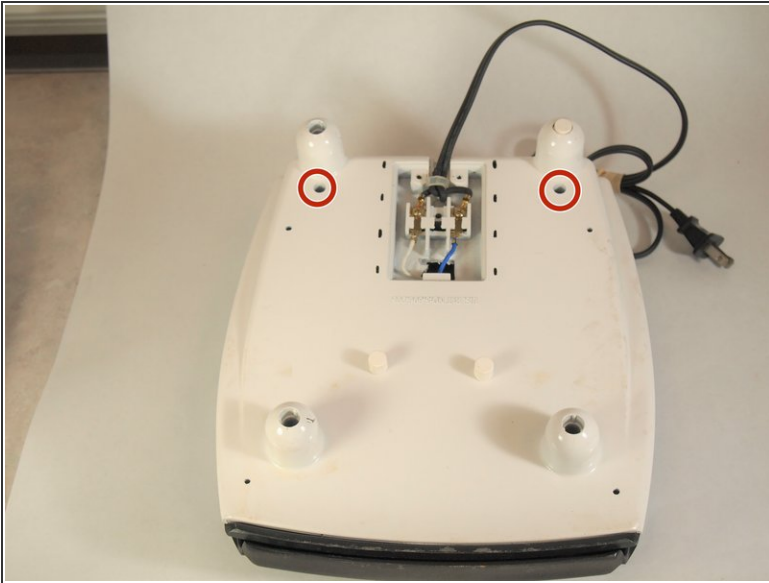
- To access the underside of the grill, flip the grill over and remove the rubber bottoms of the two front feet to expose the screws.

## Step 6



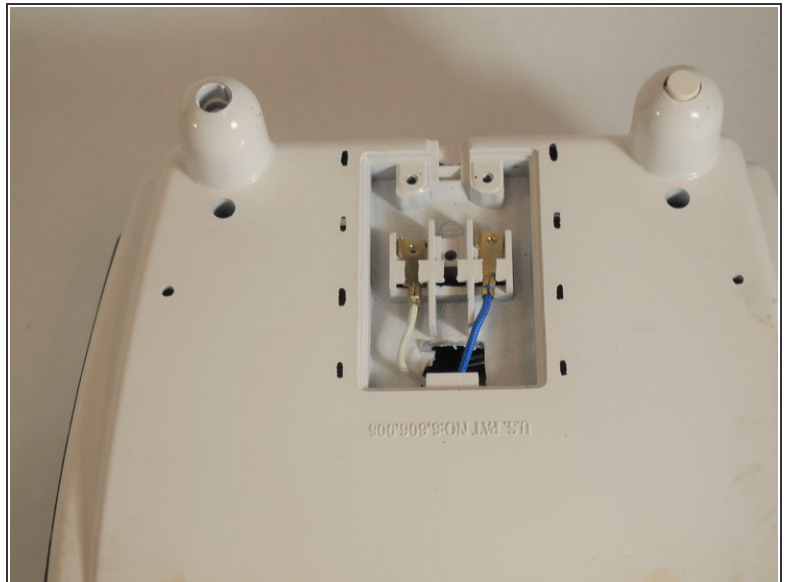
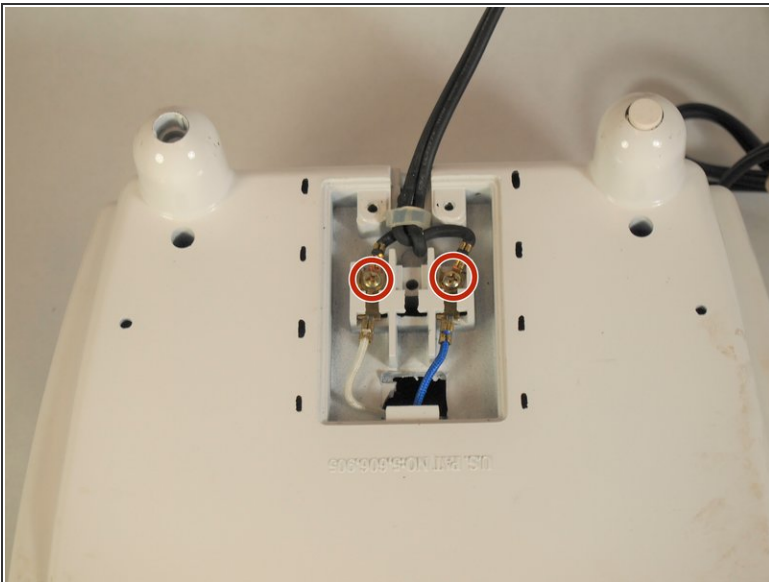
- Remove the two screws using a Phillips #2 screwdriver.

## Step 7



- Remove the two Phillips #2 screws in front of the two back feet.

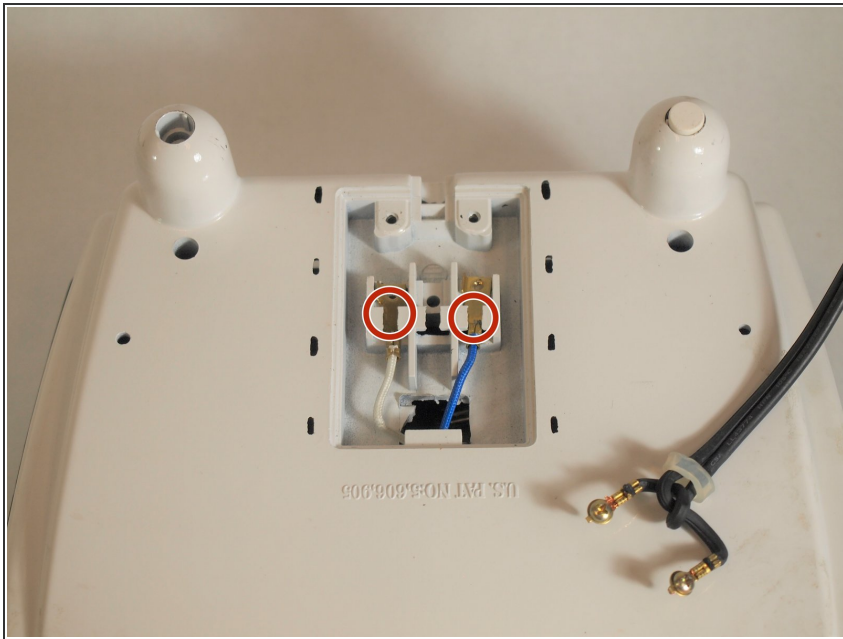
## Step 8



- To remove the power cord from the device, remove the two Phillips #2 screws keeping the power cord and the blue and white wires connected.

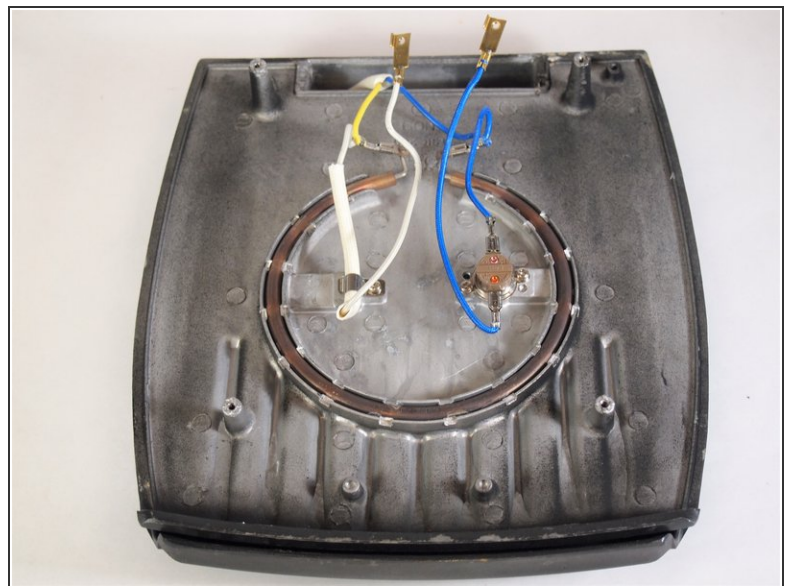
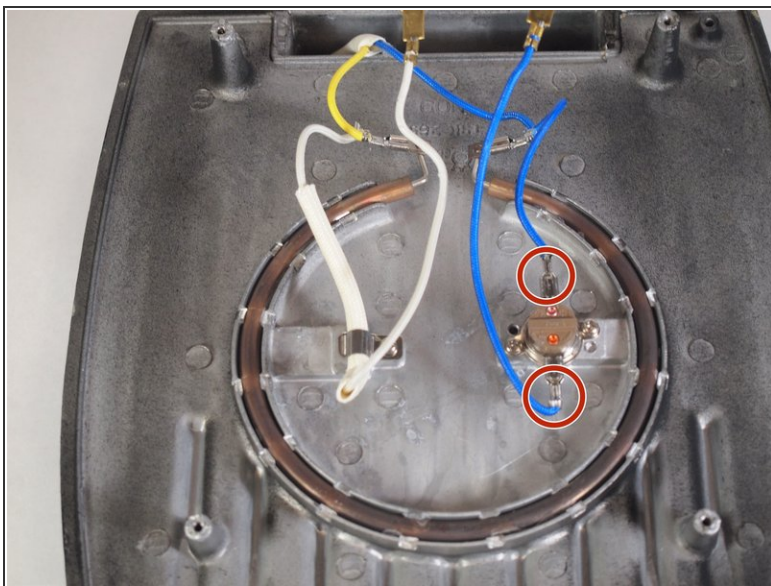


## Step 9



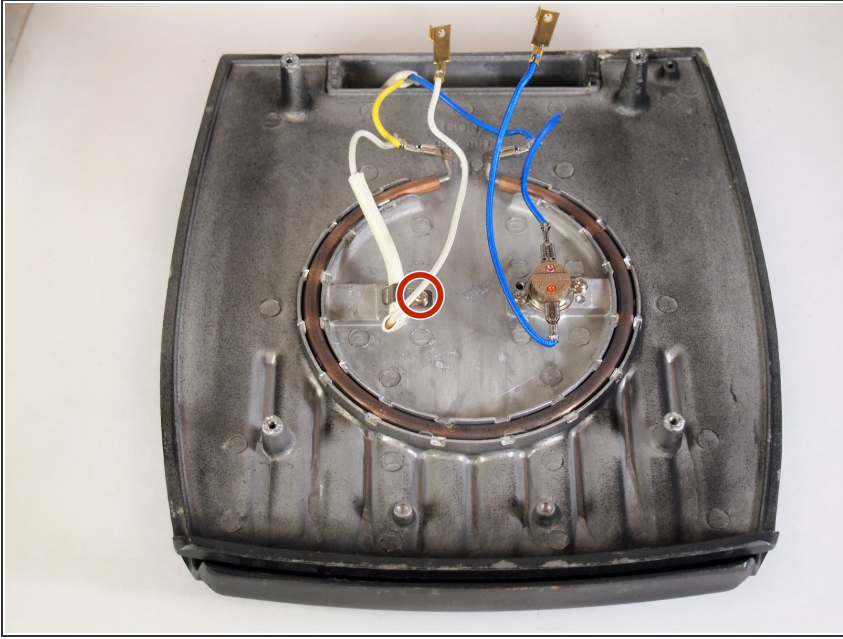
- After removing the screws, slide the blue and white wires out through the gap.
- ⓘ You will now have access to the underside of the grill.

## Step 10



- Remove the two Phillips #2 screws attaching the fuse to the grill.
- Remove the fuse from the grill.

## Step 11



- Remove the Phillips #2 screw from the white wire.
- Remove the white wire from the grill.

To reassemble your device, follow these instructions in reverse order.