



# How to Repair a Large Wall Hole Using Drywall

How to fix a large broken hole in a wall using a drywall

Written By: Mustafa



## INTRODUCTION

In this guide, I will show you how to fix a large hole in a wall with drywall. If you follow my guide properly, you will not need to hire a professional to fix any type of hole in a wall. This repair requires some practice using a drill, a hand saw, and a box cutter. You will need to know how to use a tape measure to effectively measure the two 2x2 wood. Please refer to the tools used in my project before starting to make you are properly equipped to fix the broken wall.

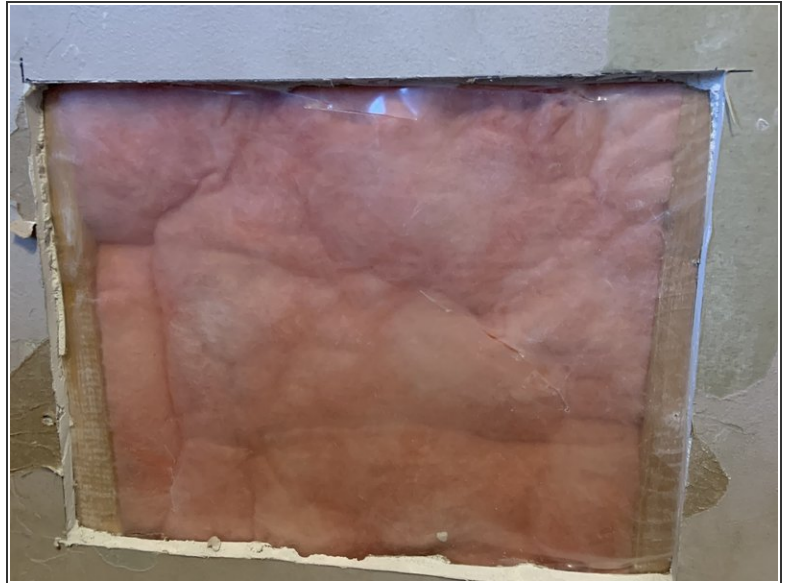
**Caution:** Make sure to use care and caution when using the tools described in this guide. Also, when working with drywall, protective gear should be worn. Safety goggles and a dust mask can prevent inhalation of dust particles.

---

### TOOLS:

- [6x2 drywall screws](#) (1)
  - [Measuring Tape](#) (1)
  - [2x2 wood](#) (2)
  - [Drywall Mesh Tape](#) (1)
  - [drywall filler\(mud\)](#) (1)
  - [Power Drill](#) (1)
  - [Hand wood Saw](#) (1)
  - [Putty knife](#) (1)
  - [1500 Grit Sandpaper](#) (1)
  - [Pencil](#) (1)
  - [Precision Utility Knife](#) (1)
-

## Step 1 — How to Repair a Large Wall Hole Using Drywall



- Measure the distance between the nearest studs on either side of the hole using a tape measure.
- Trace a rectangular/square shape around the hole in pencil.
- Use a box cutter to cut along the lines, making the hole into an even rectangular/square shape.

## Step 2



- Use the tape measure to measure the drywall to fit the dimensions of the hole trimmed in Step 1.
- Cut out the section of drywall with the box cutter.



### Step 3



- Measure out the two pieces of wood using the tape measure. These strips of wood should be just a few inches longer than the length of the hole.
- Cut the pieces of wood to the desired length with the hand saw.

### Step 4



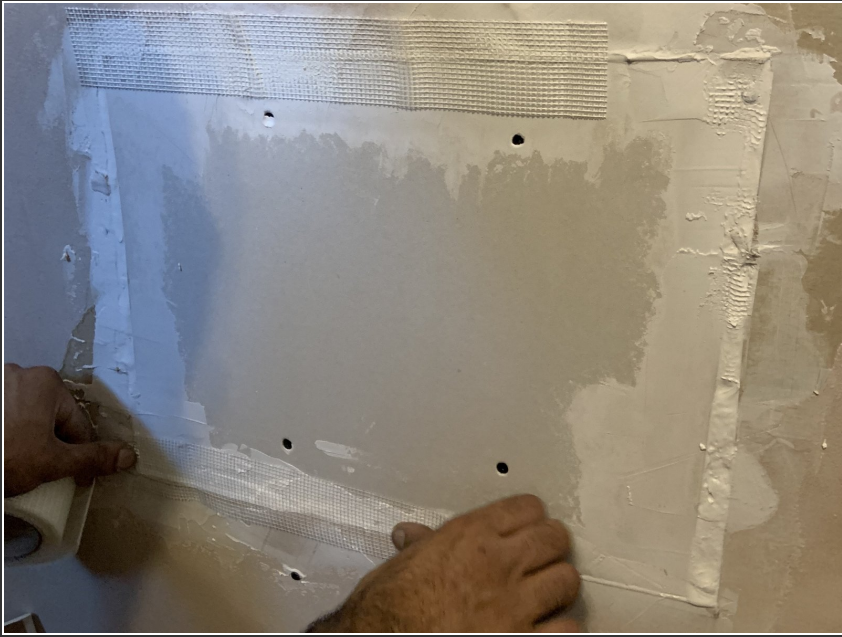
- Place the two pieces of wood vertically inside the hole.
- Use a Phillips flat head drill bit to drill 6x2 mm drywall screws into the two pieces of wood to the inside of the hole.

## Step 5



- Place the section of drywall you cut in Step 2 into the hole.
- ⓘ The section of drywall should fit inside the hole snugly. The margins do not have to fit perfectly, but there should be no larger than a 1/8 inch gap between the dry wall and the edges of the hole.
- Screw the drywall into the pieces of wood.
- ⓘ Make sure to screw in the corners of the drywall to ensure stability.

## Step 6



- Cut pieces of drywall mesh tape so that they will cleanly cover the gaps between the drywall and the hole.
- Apply the pieces of dry wall mesh tape to the seams.

## Step 7



- Apply drywall filler over the mesh tape and the holes left by the screws using a putty knife.

## Step 8



- After the surface is completely dry, smooth out the wall with sandpaper.
- Paint the wall the color of your choice.