



Fix a Loose Mounting Dream MD2462 TV Wall Mount

How to Fix a Loose Mounting Dream TV Wall Mount. This project will show you how to fix a wall mount that is loose.

Written By: Emmanuel Emedeke



INTRODUCTION

Flat-screen TVs are often secured to the wall using wall mounts. If your wall mount (Mounting Dream MD2462) is coming out of the wall, you can use this guide to repair it. Loose screws can potentially cause the TV to fall out of the wall, creating a safety hazard. Be sure to unplug the cables in your TV before beginning this repair.

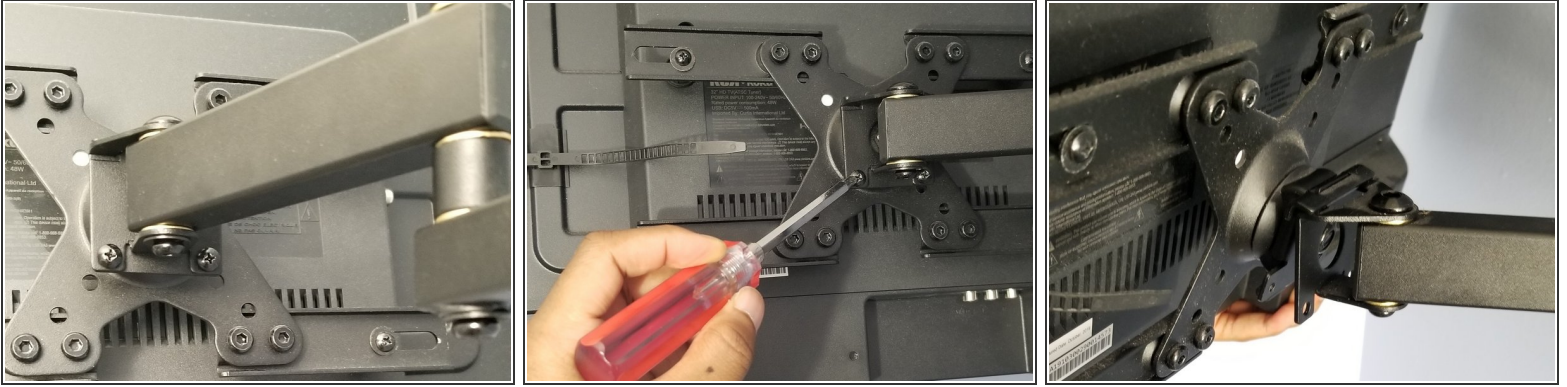
It is also essential to note that this product contains small items which may be choking hazards for children. Before beginning this guide, make sure that all the parts are in good condition. The product also includes some extra hardware components, which might not be needed.



TOOLS:

- [Phillips #00 Screwdriver](#) (1)
 - [13mm Wrench](#) (1)
 - [Cordless Drill](#) (1)
 - [Spirit level gauge](#) (1)
 - [Pencil](#) (1)
 - [Stud finder](#) (1)
 - [3 lag bolts, 3/8" x 4"](#) (1)
 - [3/8" Drill Bit](#) (1)
 - [drywall spackle](#) (1)
-

Step 1 — Fix a Loose Mounting Dream MD2462 TV Wall Mount



- Remove the two M4x5mm bolts on the back of the TV plate using a Phillips #00 screwdriver.

⚠ Unplug the TV cables before removing the TV from the wall.

Step 2



- Remove the three lag bolts from the wall mount by using a 13mm open-end wrench.

ⓘ If it is too loose, it can just be pulled out.

Step 3



- Fill the holes where the screws were secured using drywall spackle.


Step 4



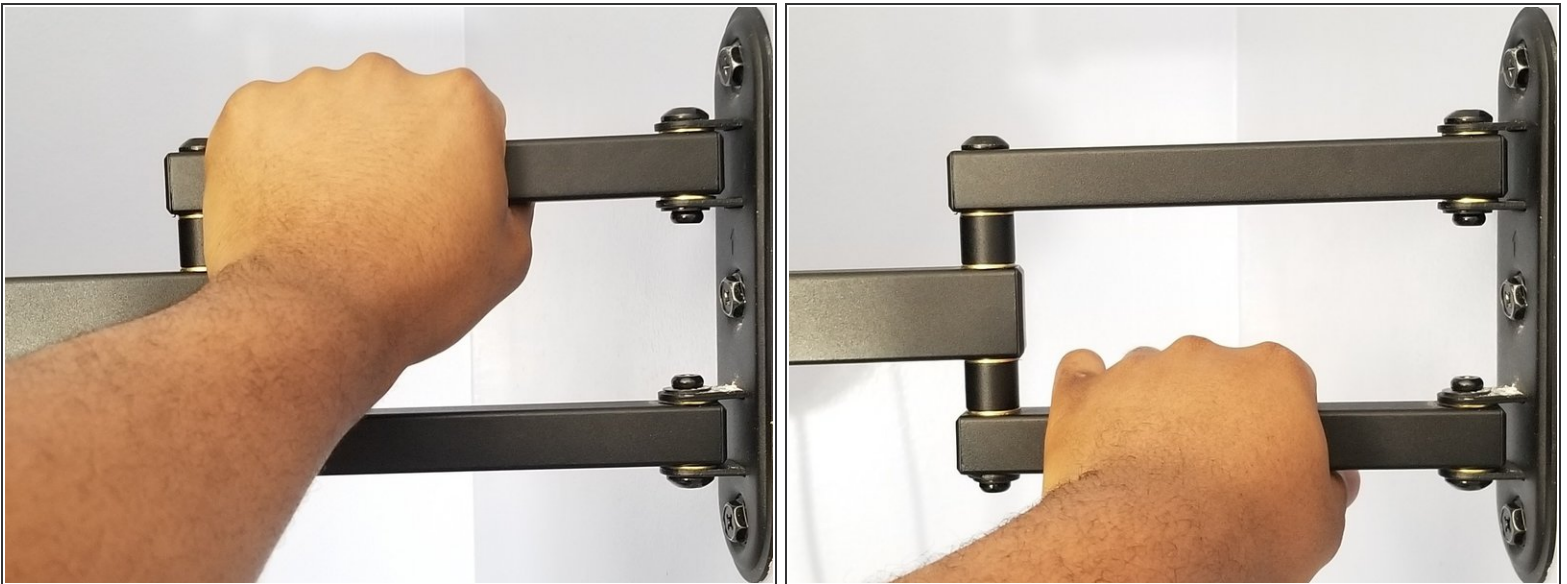
- Locate the wooden studs on the wall using a stud finder or knock on the wall to see if the stud is behind the wall.

Step 5



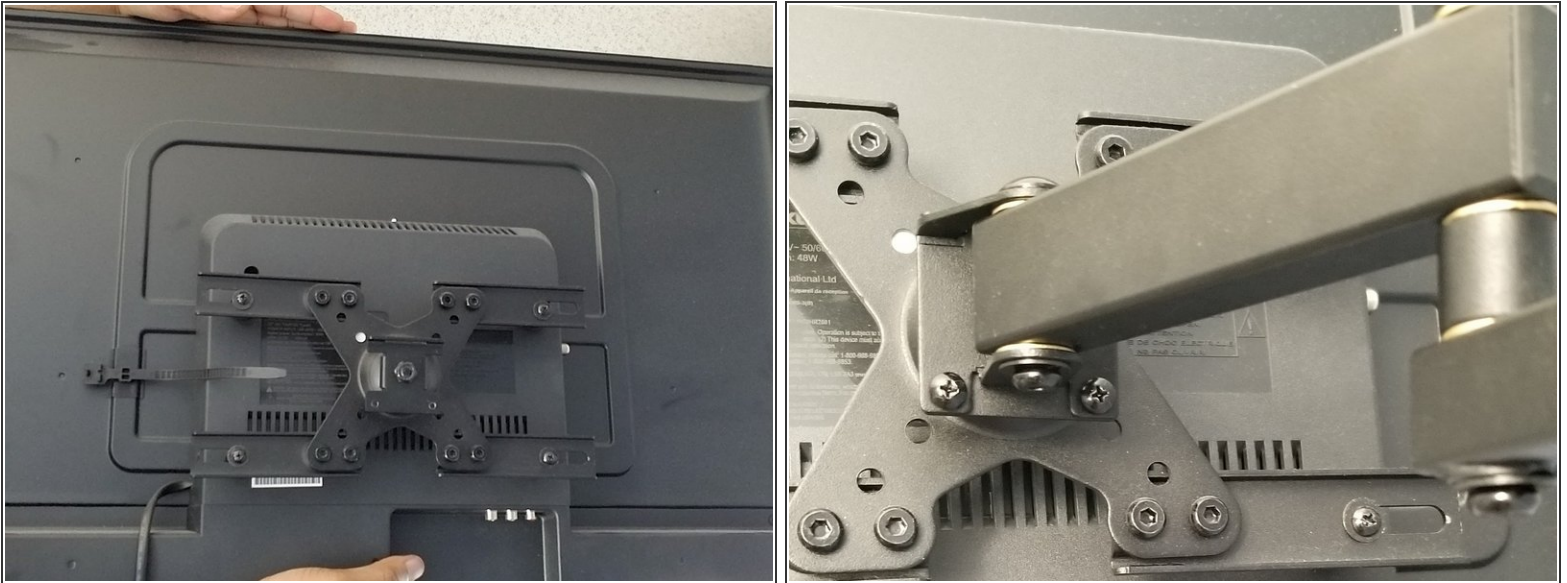
- Use a pencil to mark three holes on the wall.
 - Use a 3/8-inch drill bit to drill three holes at the marked positions.
 - Secure the wall mount into the wooden studs using new screws or bolts.
-  Ensure that all the screws are firmly secured to the wooden stud.

Step 6



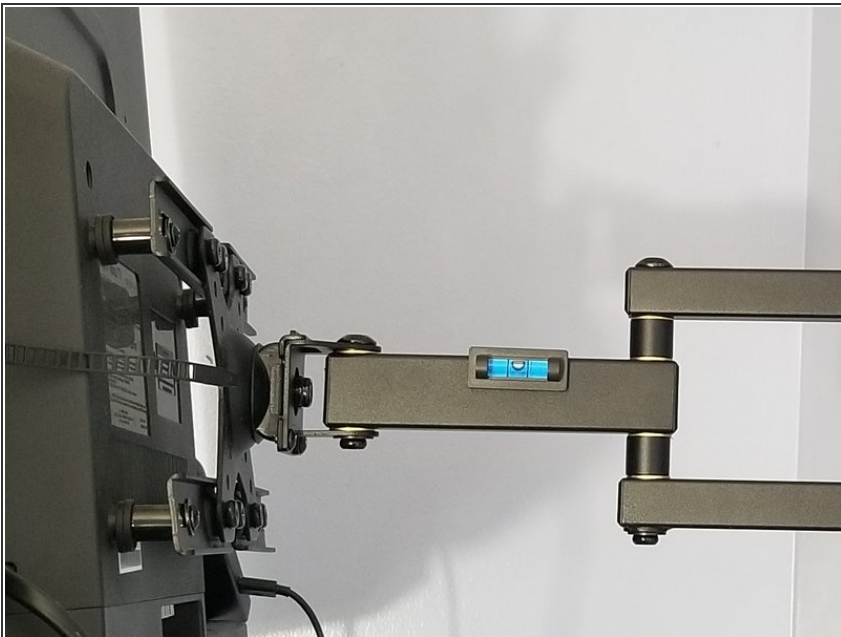
- Test the firmness of the TV wall mount by gently pushing it up and down.

Step 7



- Gently replace the TV back on the wall mount.

Step 8



- Make sure the TV is secure and well-centered on the wall mount using a spirit level gauge to confirm the inclination.

To reassemble your device, follow these instructions in reverse order.