



Nintendo Switch Lite Back Panel Replacement

Replace a cracked or damaged back panel on the Nintendo Switch Lite.

Written By: Craig Lloyd



INTRODUCTION

Follow this guide to replace a cracked or damaged back panel on the Nintendo Switch Lite.

The Switch Lite uses JIS screws, but you can use a Phillips screwdriver in a pinch. Be very careful not to strip the screws. iFixit's Phillips bits are designed to be cross-compatible with JIS-style screws.



TOOLS:

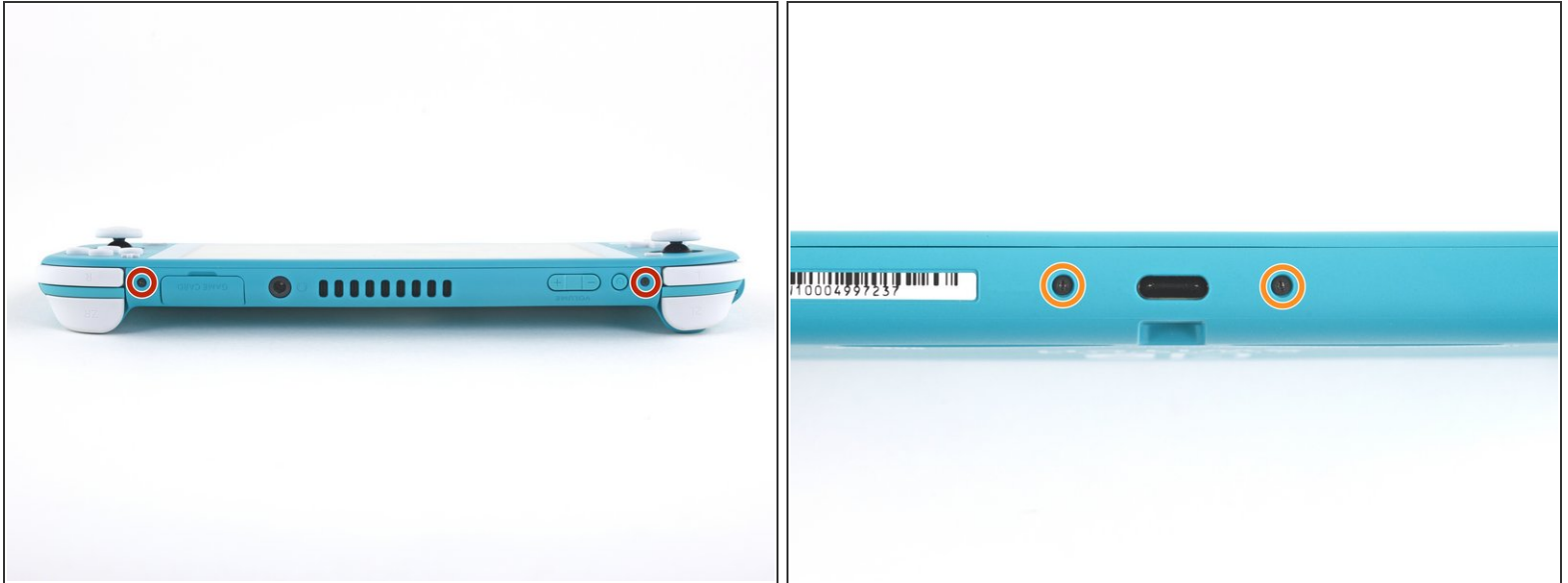
- [Tri-point Y00 Screwdriver](#) (1)
 - [Phillips #00 Screwdriver](#) (1)
 - [iFixit Opening Tool](#) (1)
-

Step 1 — Remove the back panel screws



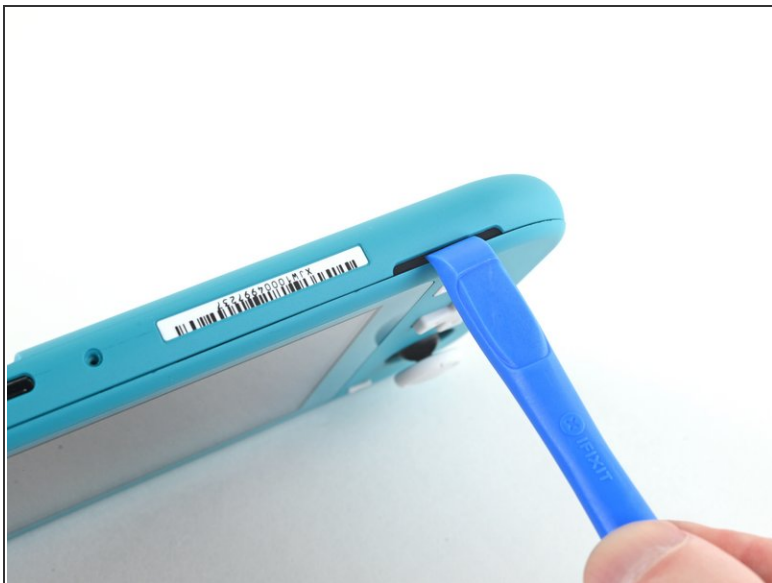
- ⚠ Before beginning this repair, make sure that the device is completely turned off.
- Use a Y00 screwdriver to remove the four 6.3 mm-long screws securing the back panel.
- ℹ Throughout this repair, [keep track of each screw](#) and make sure it goes back exactly where it came from.

Step 2 — Remove the top and bottom back panel screws



- Use a JIS 000 driver or an official iFixit PH 000 driver to remove the following screws securing the back panel:
 - Two 3.6 mm-long screws on the top of the device
 - Two 3.6 mm-long screws on the bottom of the device
- ⓘ To prevent these tight screws from [stripping](#), apply firm downward force, work slowly and try a different screwdriver if the screws won't come out.

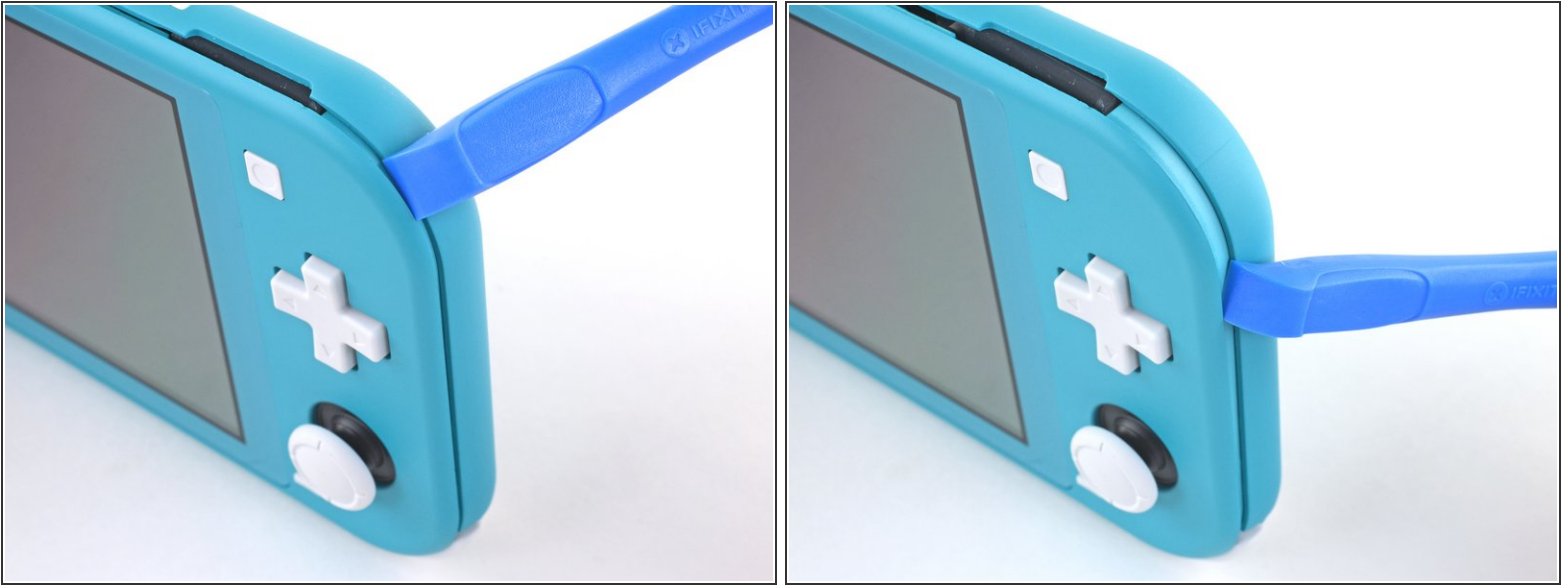
Step 3 — Release the clips securing the back panel



- Insert an opening tool into the left speaker grille on the bottom of the device.
- Twist the opening tool to release the clips securing the back panel.

⚠ Avoid inserting the opening tool further than required to prevent damage to the speaker module.

Step 4 — Continue releasing the clips around the device



- Slide the opening tool around the bottom-left corner to release the clips on the left side of the device.

Step 5 — Twist to release the clips



- Insert an opening tool into the right speaker grille on the bottom of the device.
- Twist the opening tool to release the clips.

⚠ Avoid inserting the opening tool further than required to prevent damage to the speaker module.

Step 6 — Slide and pry around the corners



- Slide and pry the opening tool around the bottom-right corner to release the clips on the right side of the device.

Step 7



- Continue sliding and prying the opening tool along the gap on the top of the device to release the clips.

Step 8 — Remove the back panel



- Lift the bottom edge of the back panel, opening it like a book.
- Remove the back panel.

Compare your new replacement part to the original part. You may need to transfer remaining components or remove adhesive backings from the new part before installing.

To reassemble your device, follow these instructions in reverse order.

Take your e-waste to an [R2 or e-Stewards certified recycler](#).

Repair didn't go as planned? Try some [basic troubleshooting](#), or ask our [Nintendo Switch Lite Answers community](#) for help.