



Nintendo Switch Lite Battery Disconnection

This is a prerequisite-only guide! This guide...

Written By: Craig Lloyd



INTRODUCTION

This is a prerequisite-only guide! This guide is part of another procedure and is not meant to be used alone.

TOOLS:

Tri-point Y00 Screwdriver (1)

Phillips #00 Screwdriver (1)

iFixit Opening Tool (1)

Spudger (1)

Microfiber Cleaning Cloths (1)


Isopropyl Alcohol (1)

Tweezers (1)


Thermal Paste (1)

Step 1 — Remove the back panel screws



 Before beginning this repair, make sure that the device is completely turned off.

- Use a Y00 screwdriver to remove the four 6.3 mm-long screws securing the back panel.

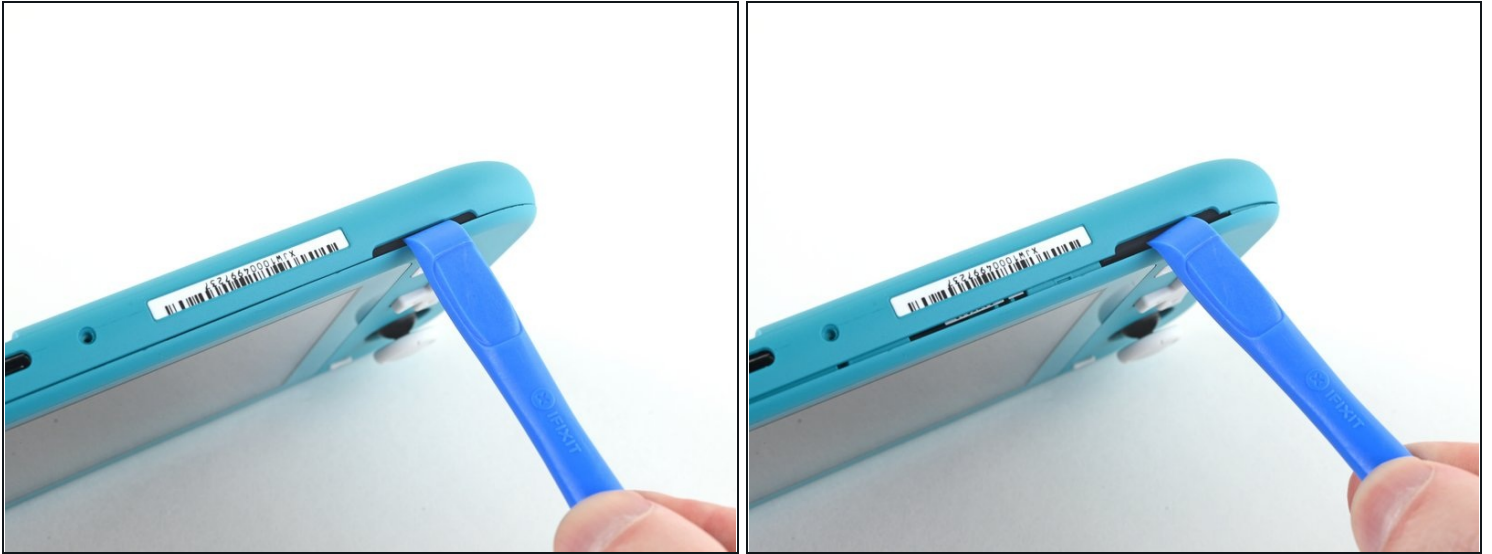
 Throughout this repair, [keep track of each screw](#) and make sure it goes back exactly where it came from.

Step 2 — Remove the top and bottom back panel screws



- Use a JIS 000 driver or an official iFixit PH 000 driver to remove the following screws securing the back panel:
 - Two 3.6 mm-long screws on the top of the device
 - Two 3.6 mm-long screws on the bottom of the device
- ① To prevent these tight screws from [stripping](#), apply firm downward force, work slowly and try a different screwdriver if the screws won't come out.

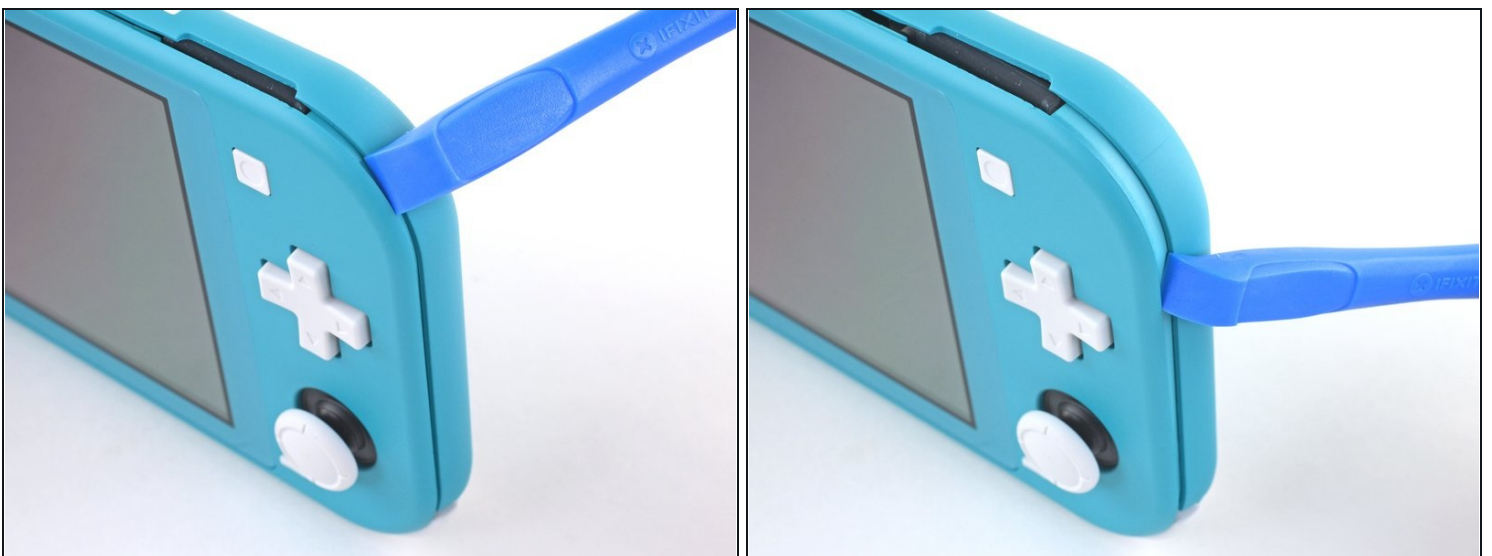
Step 3 — Release the clips securing the back panel



- Insert an opening tool into the left speaker grille on the bottom of the device.
- Twist the opening tool to release the clips securing the back panel.

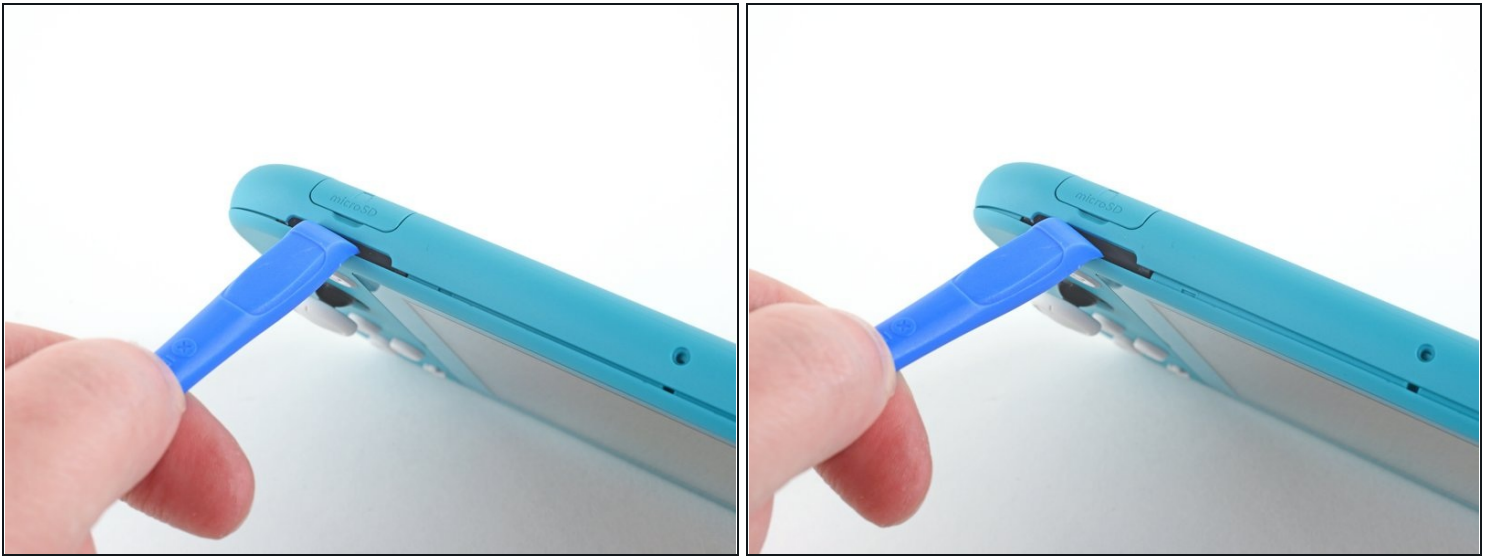
⚠️ Avoid inserting the opening tool further than required to prevent damage to the speaker module.

Step 4 — Continue releasing the clips around the device



- Slide the opening tool around the bottom-left corner to release the clips on the left side of the device.

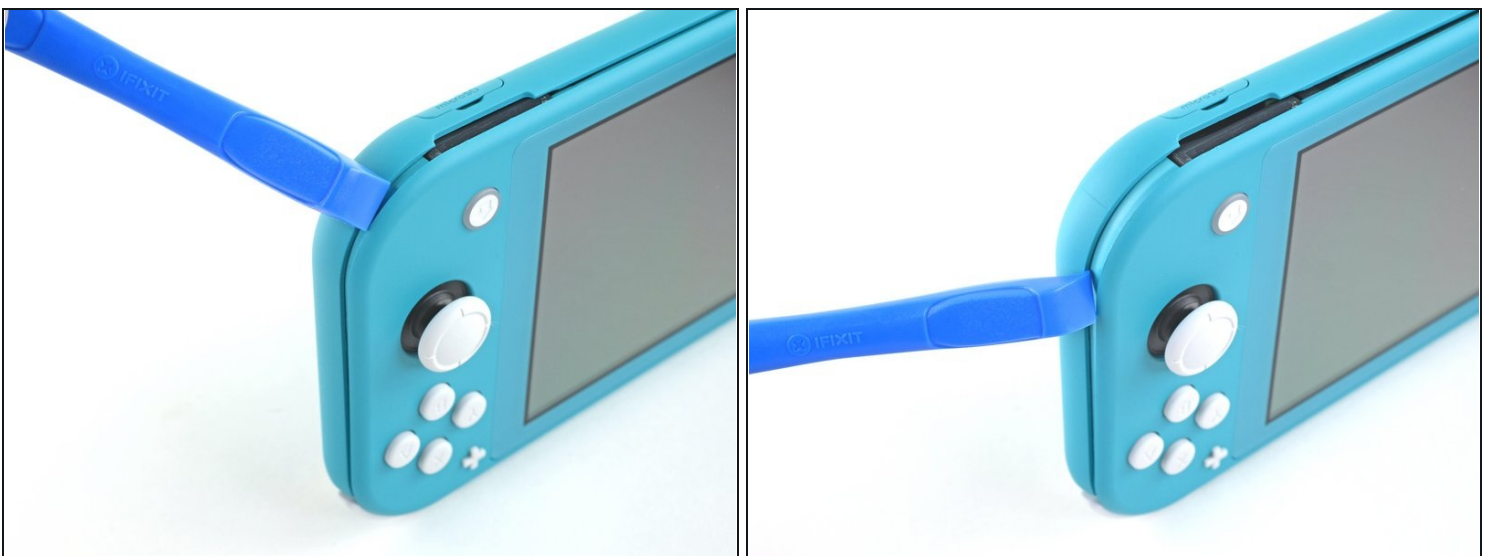
Step 5 — Twist to release the clips



- Insert an opening tool into the right speaker grille on the bottom of the device.
- Twist the opening tool to release the clips.

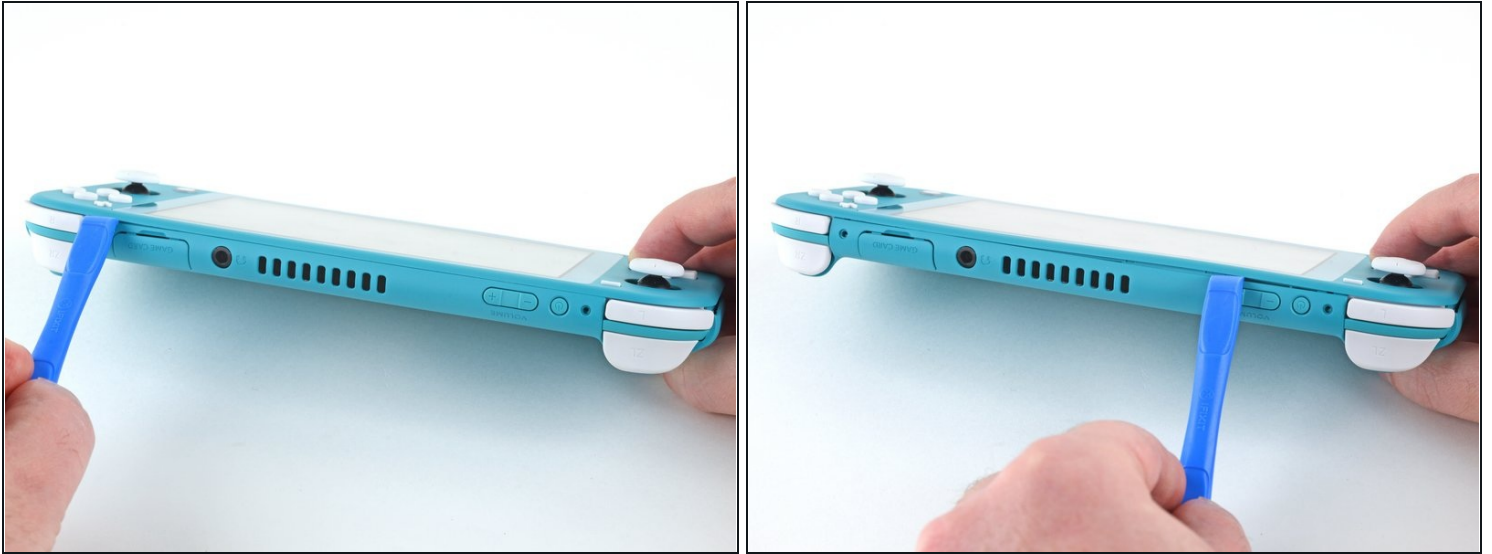
⚠ Avoid inserting the opening tool further than required to prevent damage to the speaker module.

Step 6 — Slide and pry around the corners



- Slide and pry the opening tool around the bottom-right corner to release the clips on the right side of the device.

Step 7



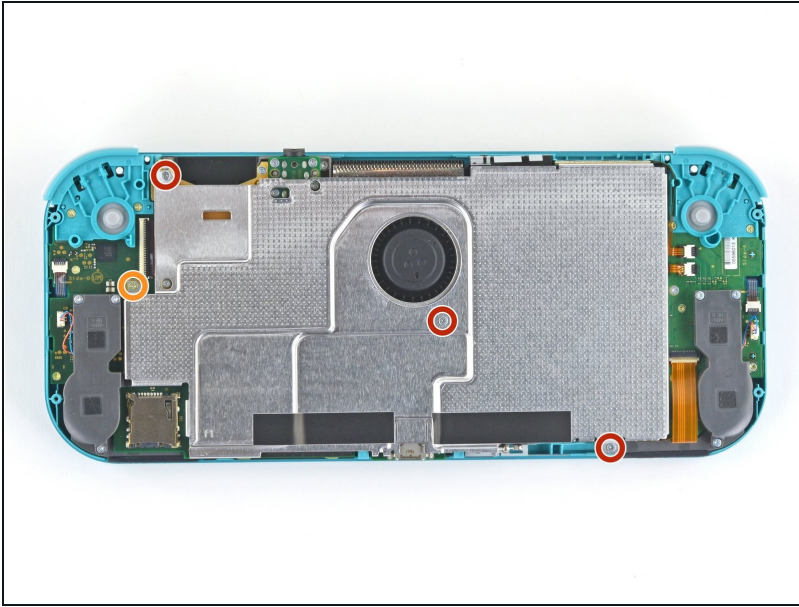
- Continue sliding and prying the opening tool along the gap on the top of the device to release the clips.

Step 8 — Remove the back panel



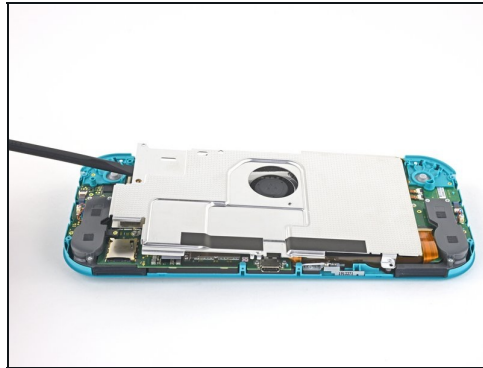
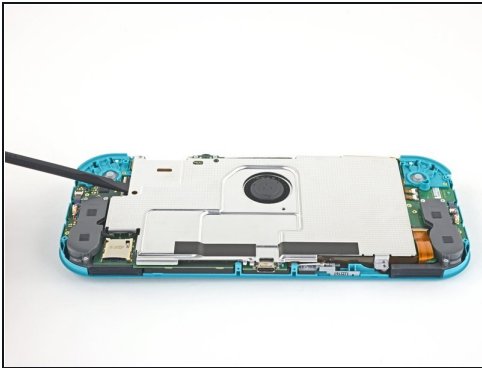
- Lift the bottom edge of the back panel, opening it like a book.
- Remove the back panel.

Step 9 — Remove the shield plate



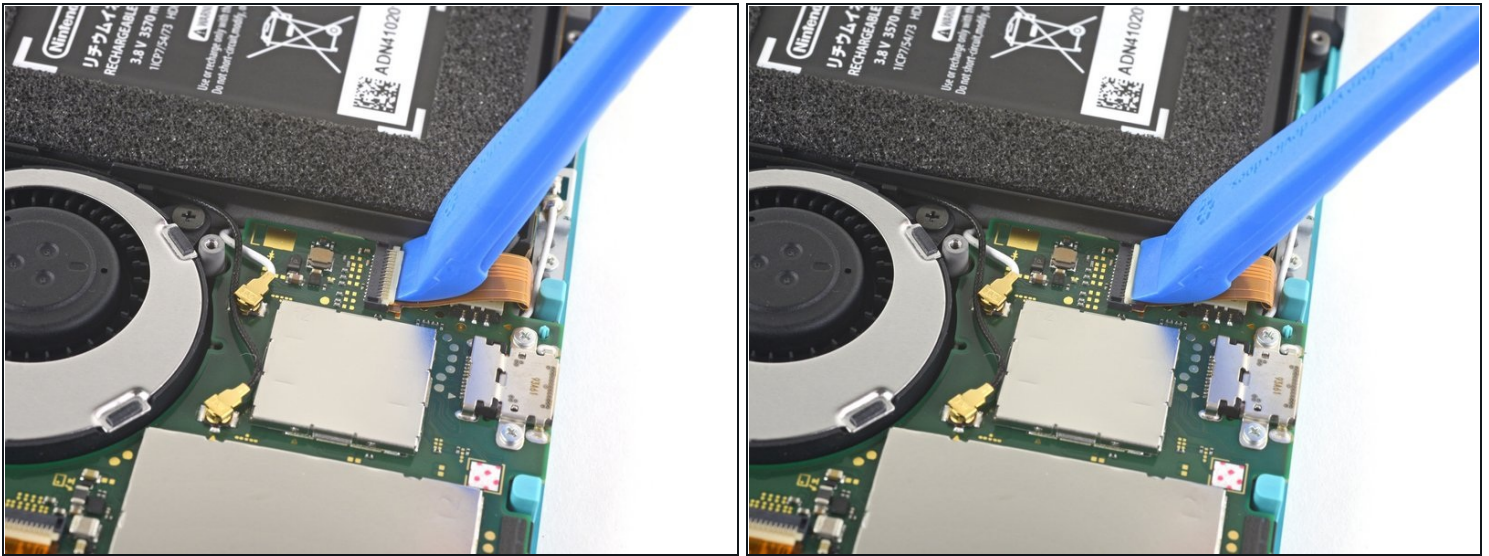
- Use a JIS 000 driver or an official iFixit PH 000 driver to remove the following four screws:
 - Three 3.1 mm screws
 - One 4.5 mm screw

Step 10



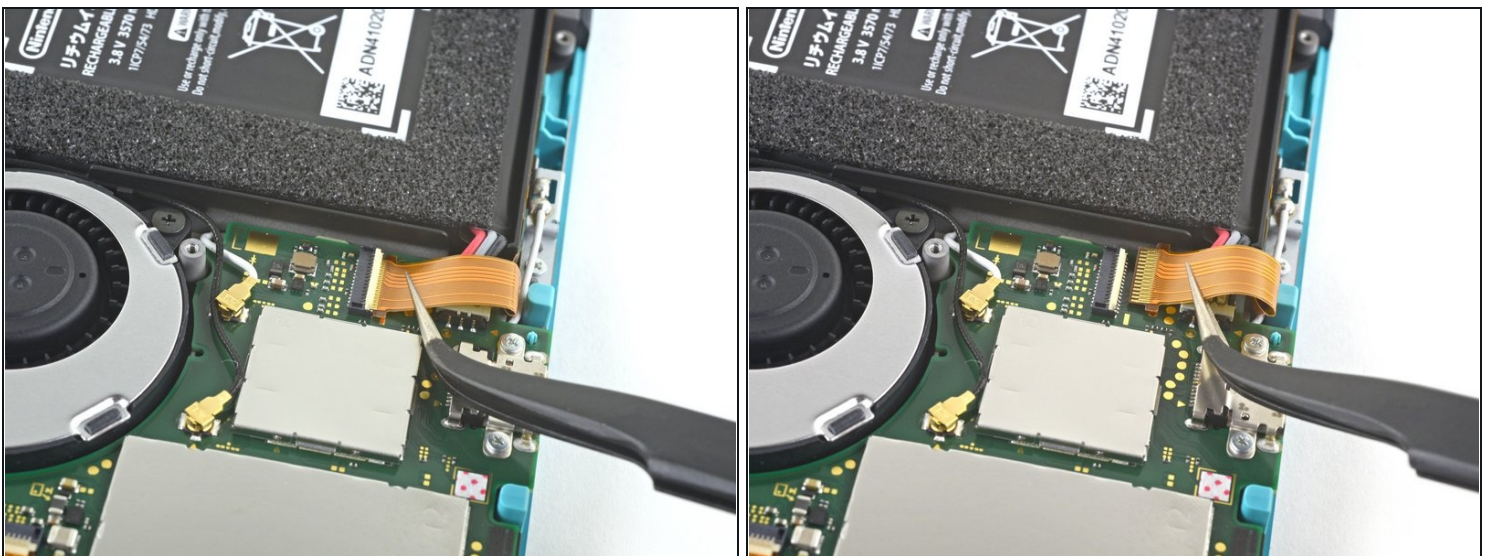
- Use a spudger or your fingers to lift the shield plate up and out of the device.
 - ① You may feel a bit of resistance. This is normal, since the shield plate is slightly bonded to the heat sink with thermal paste.
- Remove the shield plate.
 - ✦ Clean off the old thermal paste from the shield plate and heat sink using isopropyl alcohol and a microfiber cloth. [Apply new thermal paste](#) to the heat sink before reassembly.

Step 11 — Disconnect the battery



- Use an opening tool or your fingernail to flip up the small, hinged locking flap on the motherboard interconnect cable's [ZIF connector](#).

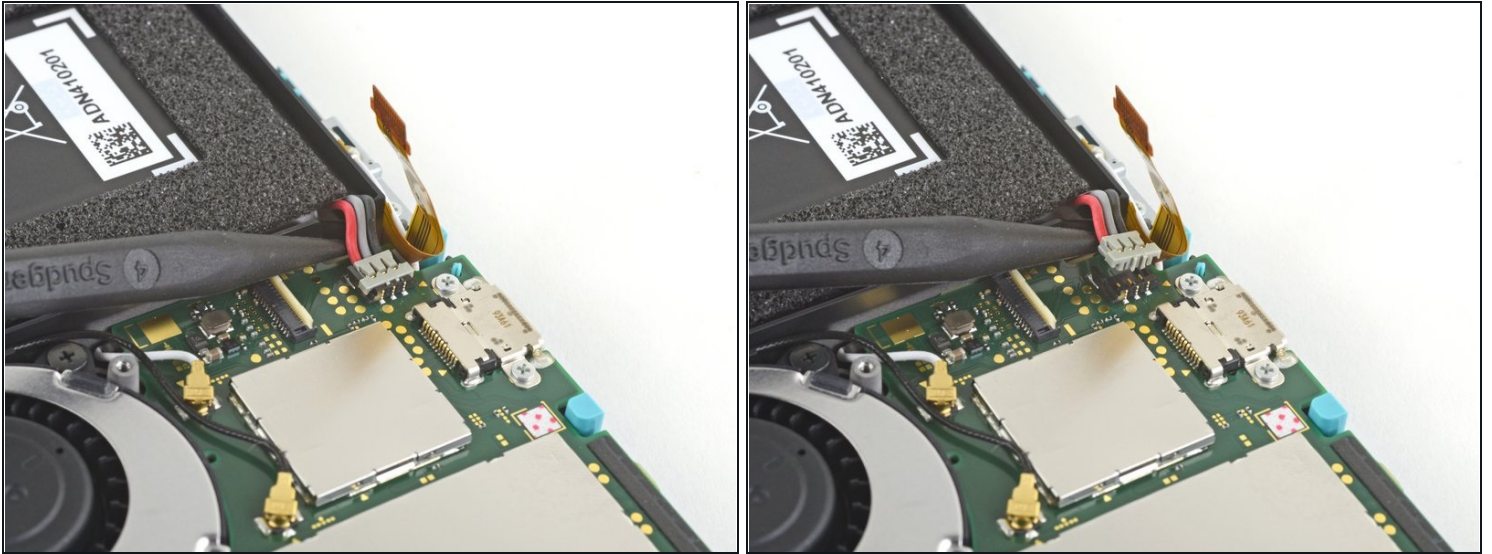
Step 12



⚠ Do Not Use Metal Tweezers! Some fixers state that metallic tweezers can short circuit the ribbon cable/connector. It might be safer to just use nylon-tipped or ceramic-tipped tweezers.

- Use a pair of tweezers to slide the interconnect cable out of its connector on the motherboard.

Step 13



- Use the point of a spudger to pry the battery connector straight up and out of its socket on the motherboard.

To reassemble your device, follow these instructions in reverse order.