



Realspace EC600 Office Chair Lift Cylinder Replacement

This guide will help you to replace the lift cylinder in a Realspace EC600 office chair.

Written By: Patrick Kay



INTRODUCTION

Use this guide to replace the lift cylinder in a Realspace EC600 office chair.

The lift cylinder is a mechanical actuator used to raise and lower a desk chair. The lever under your chair is used to let air in and out of the cylinder which will cause it to go up or down. Over time and through frequent use, this cylinder can start to slowly sink down because the air is leaking out of it. If your desk chair is starting to slowly sink down, then you can easily replace your lift cylinder.



TOOLS:

- [WD-40](#) (1)
- [Rubber Mallet](#) (1)
- [Pipe Wrench](#) (1)
- [Measuring Tape](#) (1)
- [Flathead Screwdriver](#) (1)
- [Painter's Tape](#) (1)



PARTS:

- [8 1/4 inch lift cylinder](#) (1)

Step 1 — Lift Cylinder



- Position the chair so that you have access to the underside of its base.
- ⓘ Some of the parts will be coated in oil and can create a mess in your workspace.

Step 2



- Remove the spring retaining clip by lifting with the flathead screwdriver and sliding it off with your thumb.
- Remove the washer that was underneath the clip.

Step 3



- Lift the base off of the lift cylinder.
⚠ The rubber bumper, washers, and bearings may fall off during this step.

Step 4



- Remove the rubber bumper, washers, and bearings.

Step 5



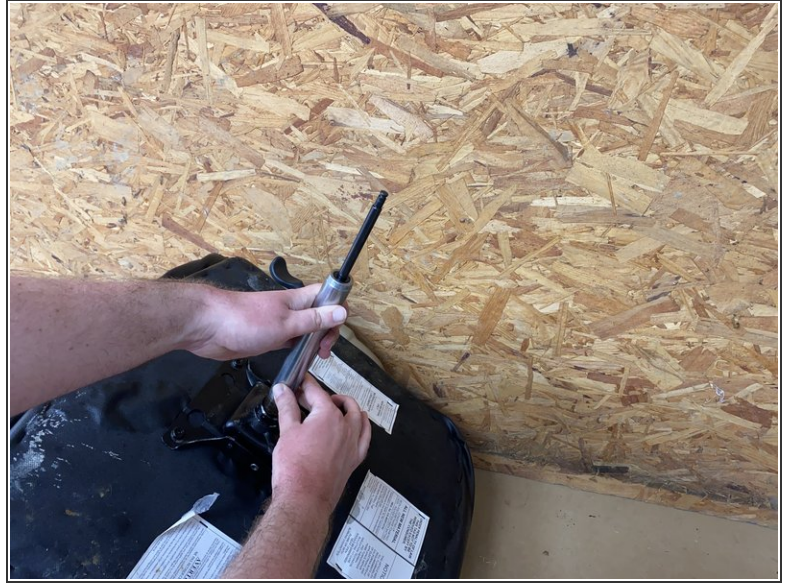
- Remove the lift cylinder cover.

Step 6



- Spray WD-40 around the base of the lift cylinder.
- Loosen the cylinder off the chair by rotating it with the pipe wrench.
- ① If you are having trouble rotating the the cylinder off, then wrap painter's tape around where you are rotating the cylinder.

Step 7



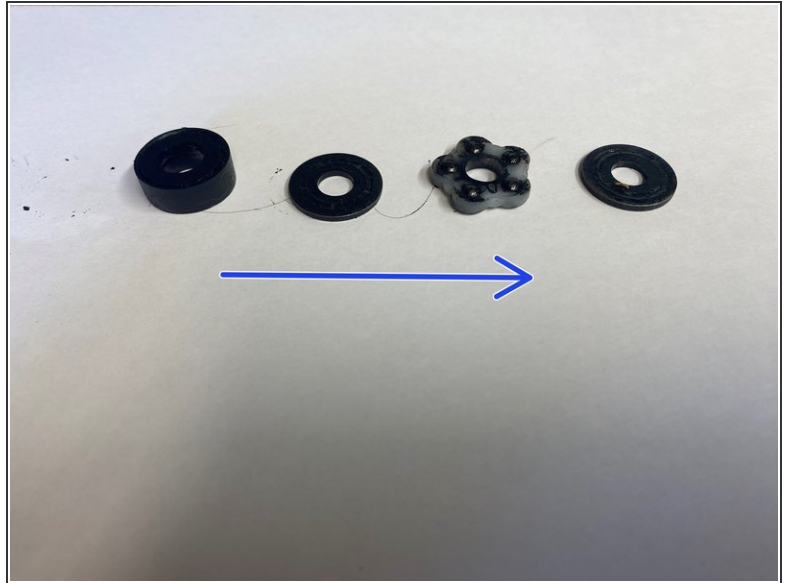
- Remove the old lift cylinder.
 - Press the new cylinder into the chair.
- ⚠ The ends of the cylinder will have oil on them so they may make a mess.

Step 8



- Push the lift cylinder cover onto the new cylinder.

Step 9



- Push the rubber bumper, washers, and bearings onto the lift cylinder.
 - The order should be from the chair to the rubber bumper, washer, bearings, and then the other washer.

Step 10



- Set the base over the lift cylinder and press it onto the cylinder.

Step 11



- Place the washer at the end of the cylinder.
- Slip the spring retaining clip onto the end of the cylinder.

Finally, flip the chair back over and press down on the seat of the chair to make sure the cylinder is completely pressed in.