



Samsung Galaxy A40 Super AMOLED Screen Replacement

Use this guide to replace a cracked or broken...

Written By: Dominik Schnabelrauch



INTRODUCTION

Use this guide to replace a cracked or broken screen on your Samsung Galaxy A40.

If the frame is deformed, it's important to replace it to make sure the new screen will mount correctly and won't suffer damage from uneven pressure.

Before disassembling your phone, discharge the battery below 25%. The battery can catch fire and/or explode if accidentally punctured, but the chances of that happening are much lower if discharged.

Note: This guide instructs you to replace only the screen while leaving the original frame and motherboard in place. However, some replacement screens for this phone come pre-installed in a new frame (a.k.a. chassis), which requires a very different procedure. Make sure you have the correct part before starting this guide.

You'll need replacement adhesive to reattach components when reassembling the device.



TOOLS:

[Phillips #00 Screwdriver](#) (1)

[iFixit Adhesive Remover](#) (1)

[Suction Handle](#) (1)

[SIM Card Eject Tool](#) (1)

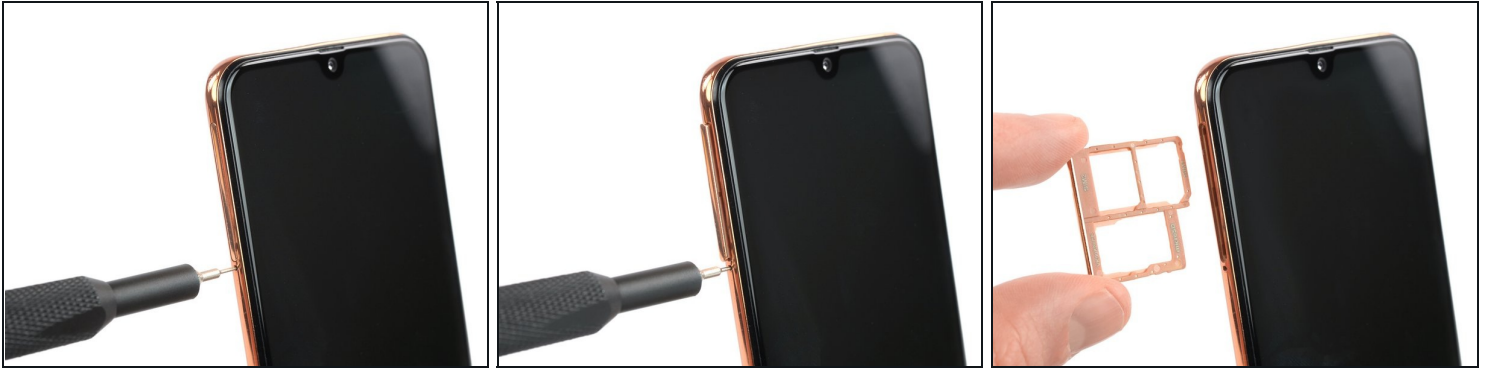
[iOpener](#) (1)

[iFixit Opening Picks \(Set of 6\)](#) (1)

[Spudger](#) (1)

[Plastic Cards](#) (1)

Step 1 — Remove the SIM tray



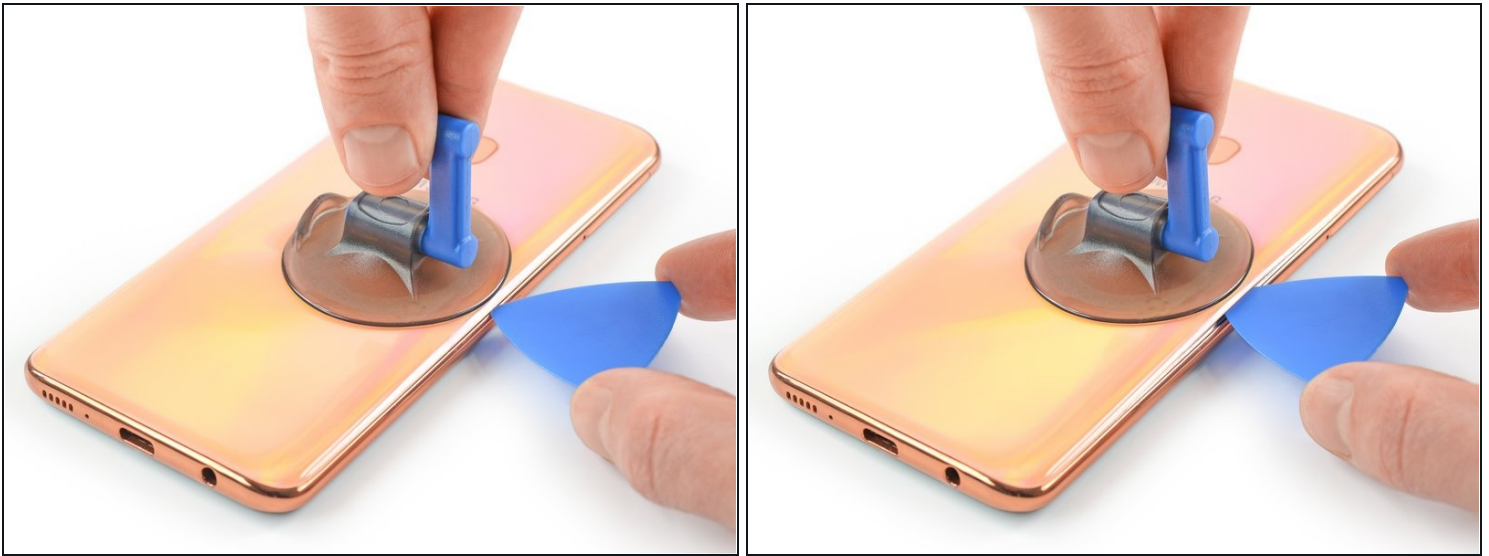
- Insert a SIM card eject tool, a SIM eject bit or a straightened paper clip into the hole on the SIM tray located on the left side of the phone.
 - Press your SIM card eject tool firmly into the hole in order to eject the SIM card tray.
 - Remove the SIM card tray.
- ⓘ When reinserting the cards, make sure to properly orient them in the tray.

Step 2 — Loosen the back cover adhesive



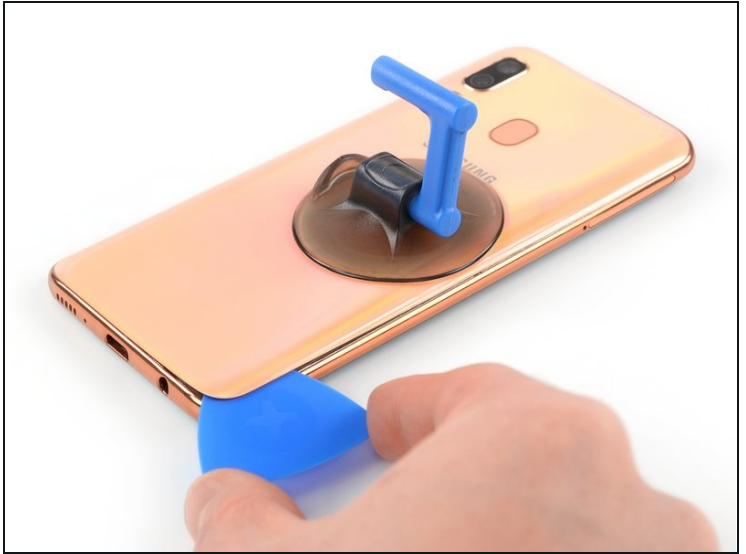
- Apply a [heated iOpener](#) to the back cover to loosen the adhesive underneath. Apply the iOpener for at least two minutes.

Step 3 — Insert an opening pick



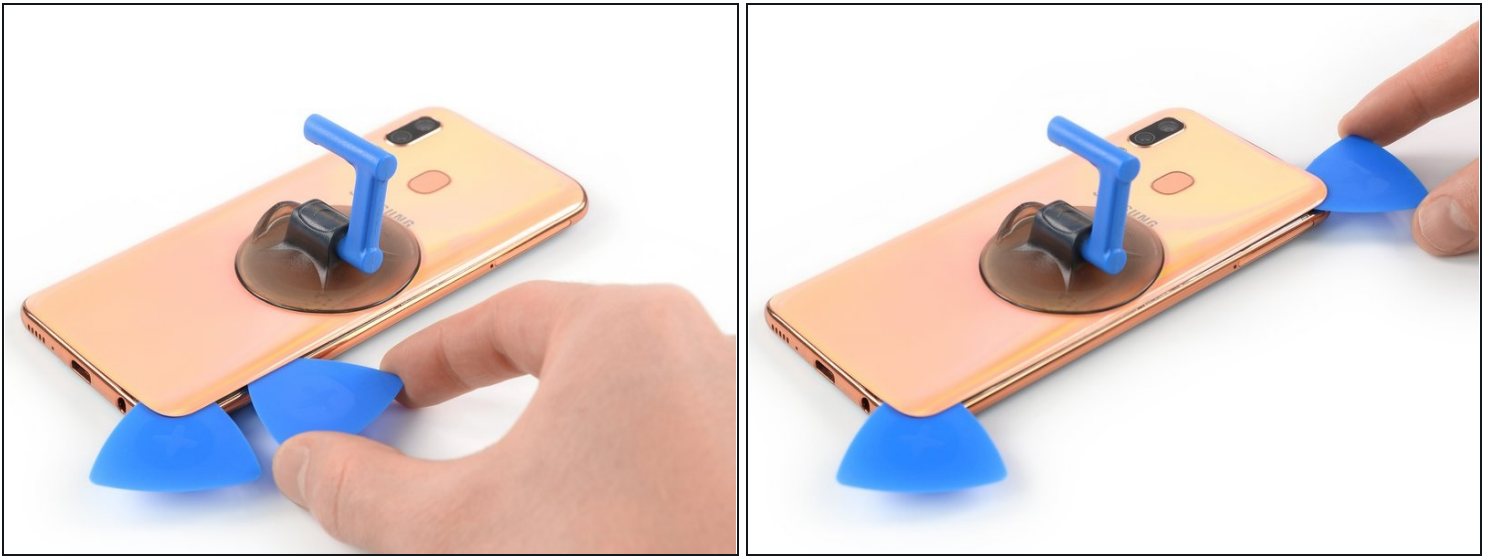
- Secure a suction handle to the right edge of the back cover, as close to the edge as possible.
 - ① If the phone's back cover is damaged, the suction handle may not stick. Try lifting it with strong tape, or superglue the suction handle in place and allow it to cure so you can proceed.
- Lift the back cover with the suction handle to create a small gap between the back cover and the frame.
- Insert an opening pick into the gap.
 - ① In case you have trouble creating a gap, apply more heat to further soften the adhesive. Follow the iOpener instructions to avoid overheating.

Step 4 — Slice the adhesive



- Slide the opening pick to the bottom right corner and leave it in place to prevent the adhesive from resealing.

Step 5 — Insert a second opening pick



- Insert a second opening pick at the bottom right corner.
 - Slide the opening pick along the right edge of your phone to cut the adhesive beneath the back cover.
 - Leave the opening pick in the top right corner.
- ⓘ At this point of the back cover removal feel free to remove the suction cup or continue to use it for a better grip.

Step 6 — Cut the adhesive



- Insert a third opening pick at the top right corner of your phone.
 - Slide the opening pick along the top edge of your phone to cut the adhesive.
 - Leave the opening pick in the top left corner to prevent the adhesive from resealing.
- ⓘ If the adhesive becomes hard to cut, it has most likely cooled down. [Use your iOpener](#) to reheat it.

Step 7



- Insert a fourth opening pick at the top left corner of your phone.
- Slide the opening pick along the left edge of your phone to cut the adhesive.
- Leave the opening pick in the bottom left corner.

Step 8



- Insert a fifth opening pick to cut the remaining adhesive at the bottom edge of your phone.
 - ① In order to cut all the adhesive at the bottom edge of the device, you need to insert the opening pick about 0.4 inch (1cm).

Step 9 — Remove the back cover



⚠ To avoid tearing the fingerprint cable during the following step, make sure to gently press down the fingerprint reader while lifting the back cover.

- Fold the back cover upwards and remove it.

Step 10 — Unfasten the screws



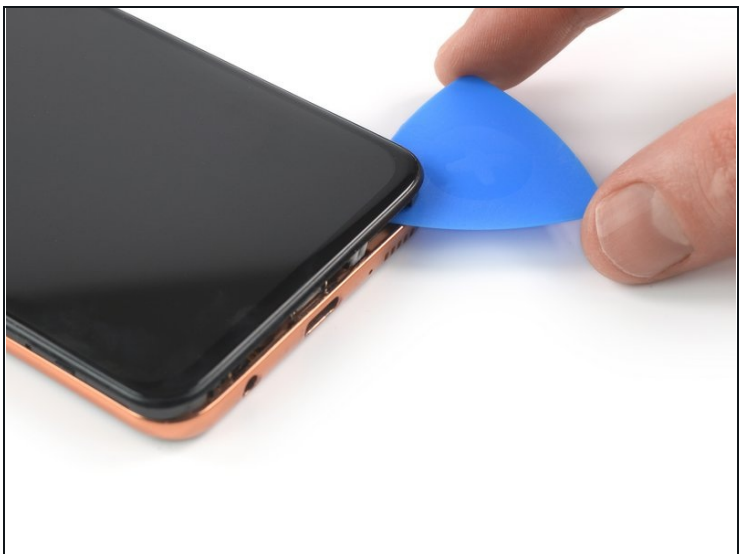
- Remove the thirteen 3.4 mm-long Phillips #00 screws.

Step 11 — Insert an opening pick



- Insert an opening pick between the left edge of the phone assembly and the midframe.
- Slide the opening pick along the left edge of the phone to release the plastic clips holding the midframe in place.

Step 12 — Release the plastic clips



- Slide the opening pick around the bottom right corner and release the plastic clips at the bottom edge of the phone assembly.

Step 13



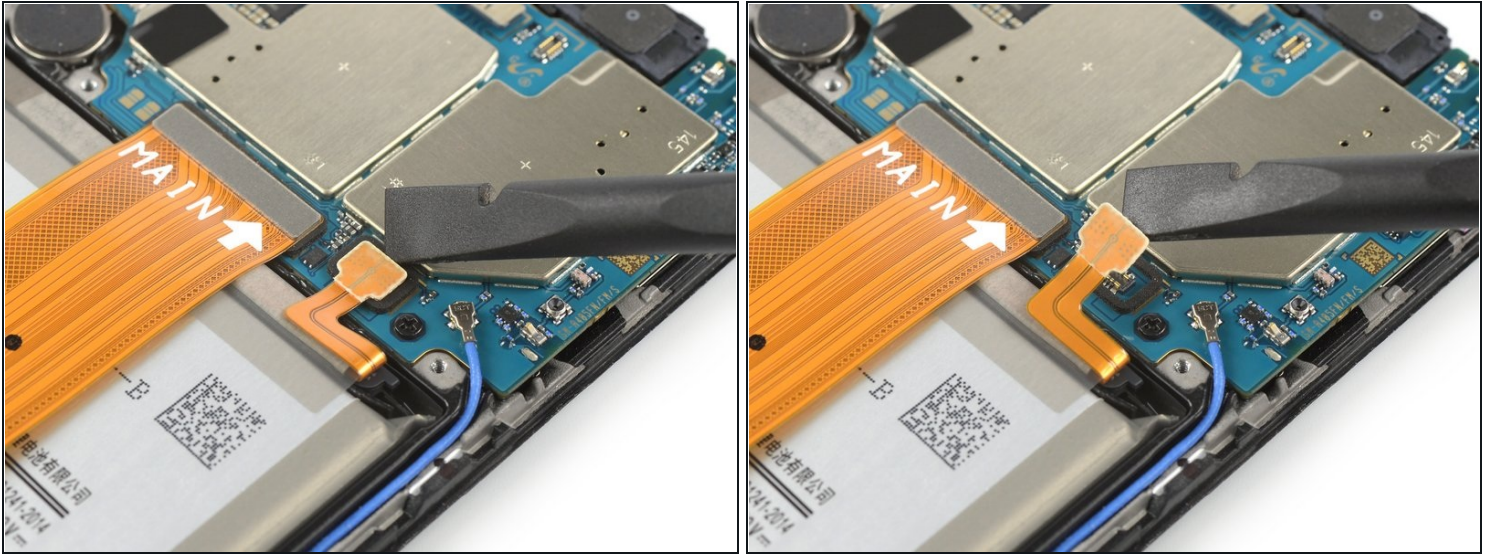
- Slide the opening pick along the right edge of the phone assembly to release the remaining plastic clips holding the midframe in place.

Step 14 — Remove the midframe



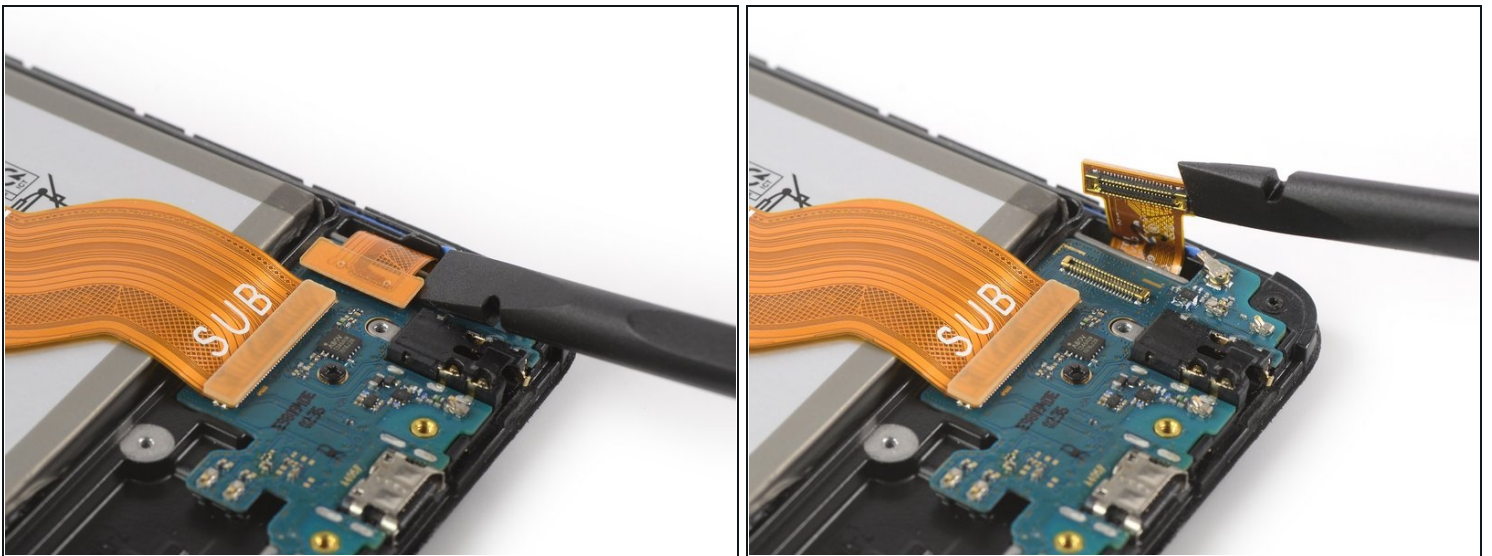
- Remove the midframe.

Step 15 — Disconnect the battery



- Use the flat end of a spudger to pry up and disconnect the battery cable.

Step 16 — Disconnect the display cable



- Use a spudger to disconnect the display flex cable at the bottom right corner of your phone.

Step 17 — Loosen the display adhesive



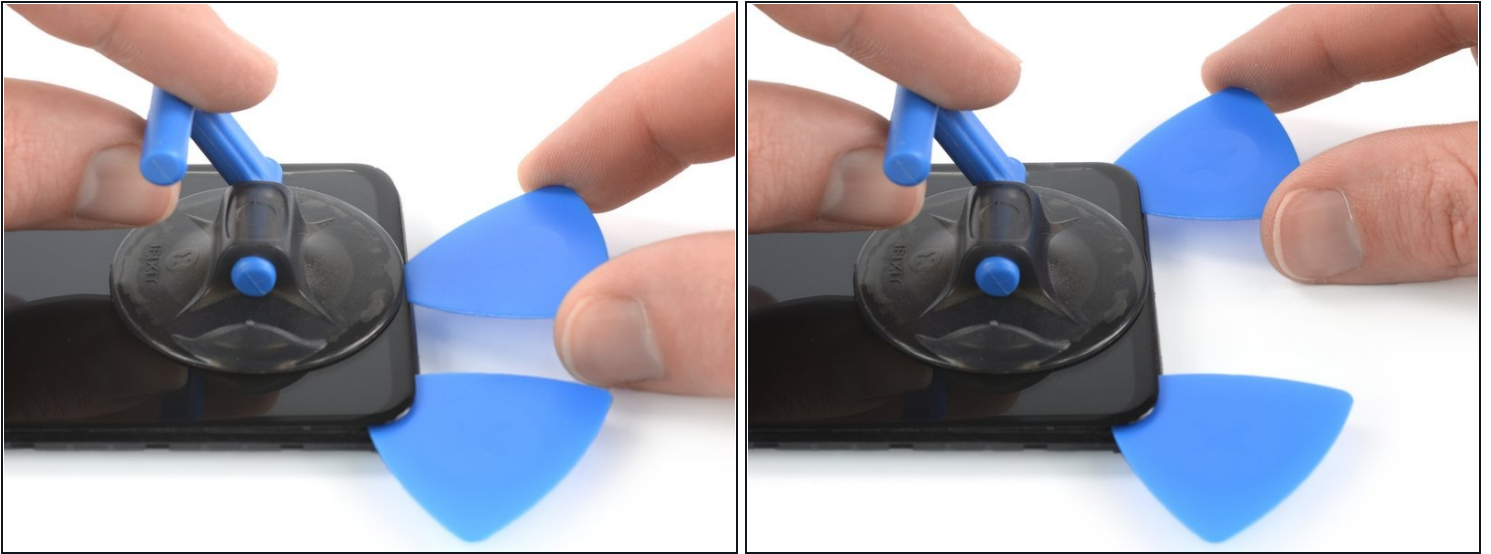
- Apply a [heated iOpener](#) to the screen to loosen the adhesive underneath. Apply the iOpener for at least two minutes.

Step 18 — Insert an opening pick



- Once the screen is warm to the touch, apply a suction handle to the bottom edge of the phone.
 - ① If the phone's screen is cracked, the suction handle may not stick. Try lifting it with strong tape, or superglue the suction handle in place and allow it to cure so you can proceed.
- Lift the screen with the suction handle to create a small gap between the screen and the frame.
- Insert the tip of an opening pick in the gap between the midframe and the screen.
- Slide the opening pick to the bottom left corner to cut the adhesive. Leave it in its place to prevent the adhesive from resealing.

Step 19 — Slice the display adhesive



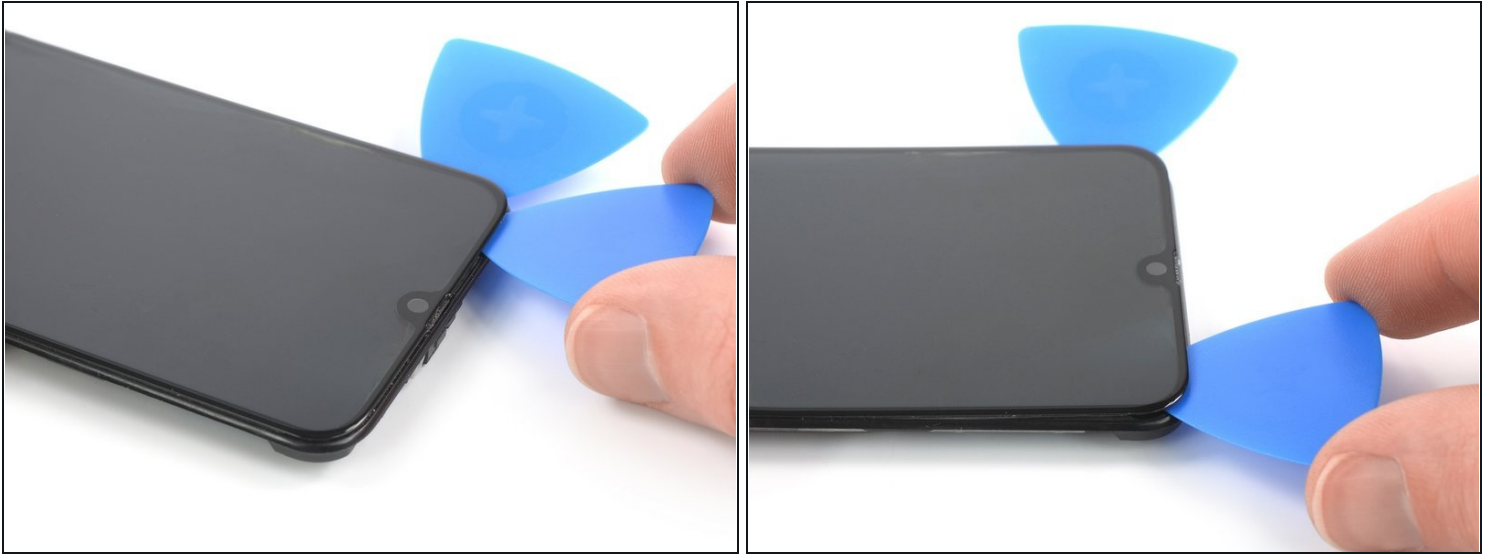
- Insert a second opening pick and slide it to the bottom right corner of the screen to cut the adhesive.
- Leave the picks in their place to prevent the adhesive from resealing.

Step 20



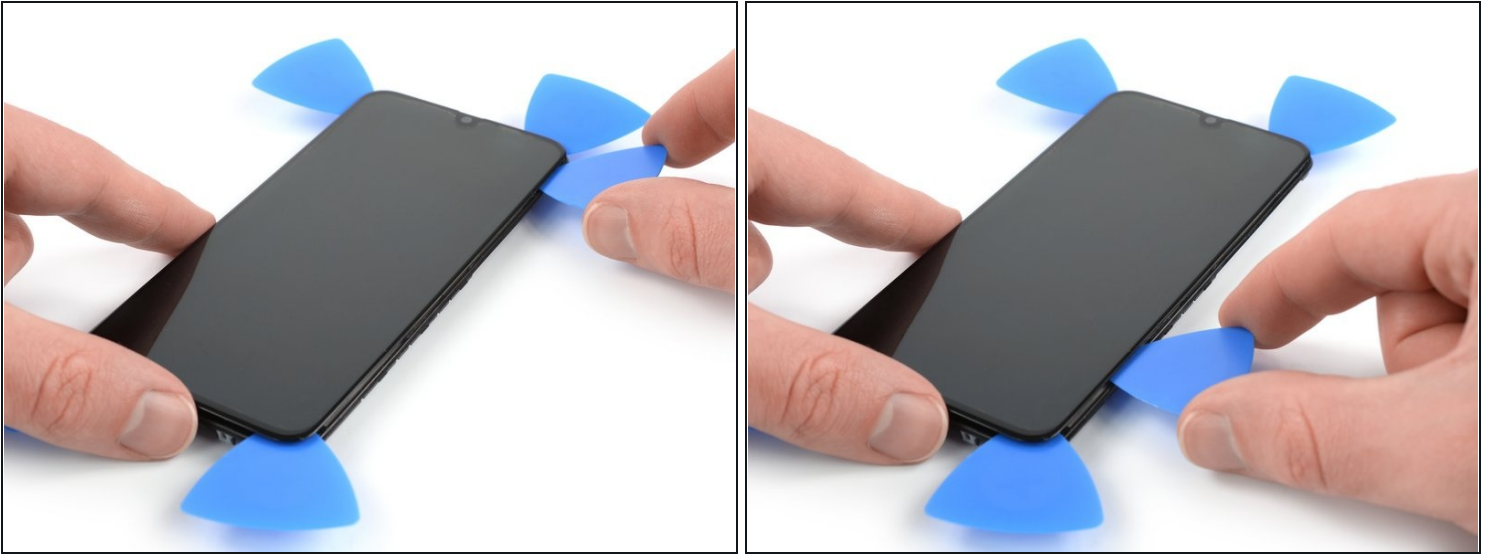
- ⓘ If the adhesive becomes hard to cut, it has most likely cooled down. [Use your iOpener](#) to reheat it.
- Insert a third opening pick under the bottom left corner of the phone.
 - Slide the opening pick up to the top left corner to cut the adhesive. Leave it there to prevent the adhesive from resealing.

Step 21



- Insert a fourth opening pick at the top left corner.
- Slide the opening pick along the top edge of the phone to cut the adhesive. Leave the pick in the top right corner of the screen to prevent the adhesive from resealing.
 - ① When you slice near the front facing camera, insert only the tip of the opening pick to avoid damaging or smearing the camera.
 - ① The top speaker grill located above the front facing camera falls out easily. Be careful not to lose it.

Step 22



- Insert a fifth opening pick and slide it along the right edge of the phone to cut the remaining adhesive.

⚠ Try not to remove the display all the way yet. The display is still held onto the midframe by adhesive beneath its center.

- Leave the opening picks in their place to prevent the adhesive from resealing.

Step 23 — Loosen the display adhesive



- Apply a [heated iOpener](#) to the screen to loosen the adhesive underneath its center. Apply the iOpener for at least two minutes.

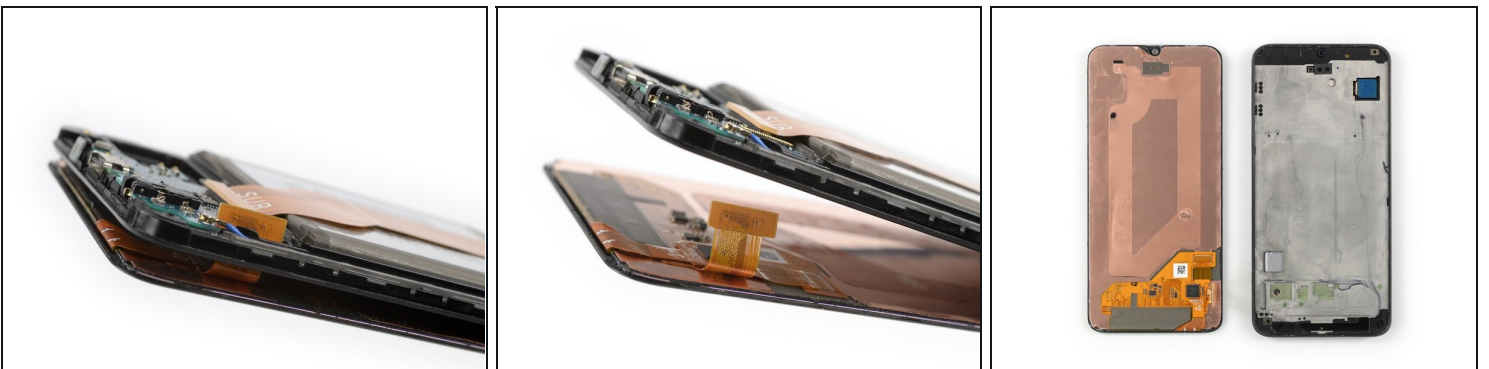
Step 24 — Insert a plastic card



- Slide a [plastic card](#) underneath the bottom right corner of the screen.
- Use the plastic card to cut the adhesive beneath the center of the screen by sliding it to the top right corner of the phone.

⚠ Try not to remove the display all the way yet, the display cable is still threaded through the frame and possibly adhered on the inner side of the midframe.

Step 25 — Remove the screen



- Thread the display flex cable through the gap in the midframe and remove the screen.
- ☑ Compare your new replacement part to the original part—you may need to transfer remaining components or remove adhesive backings from the new part before installing.

If possible, turn on your device and test your repair before installing new adhesive and resealing.

Compare your new replacement part to the original part—you may need to transfer remaining components or remove adhesive backings from the new part before installing.

To reassemble your device, follow these instructions in reverse order. Apply new adhesive where necessary after cleaning the relevant areas with isopropyl alcohol (>90%).

The best way to secure the new screen is to [apply a sheet of custom-cut double-sided tape](#) to the back of the screen.

Take your e-waste to an [R2 or e-Stewards certified recycler](#).

Repair didn't go as planned? Try some [basic troubleshooting](#), or ask our [Answers community](#) for help.