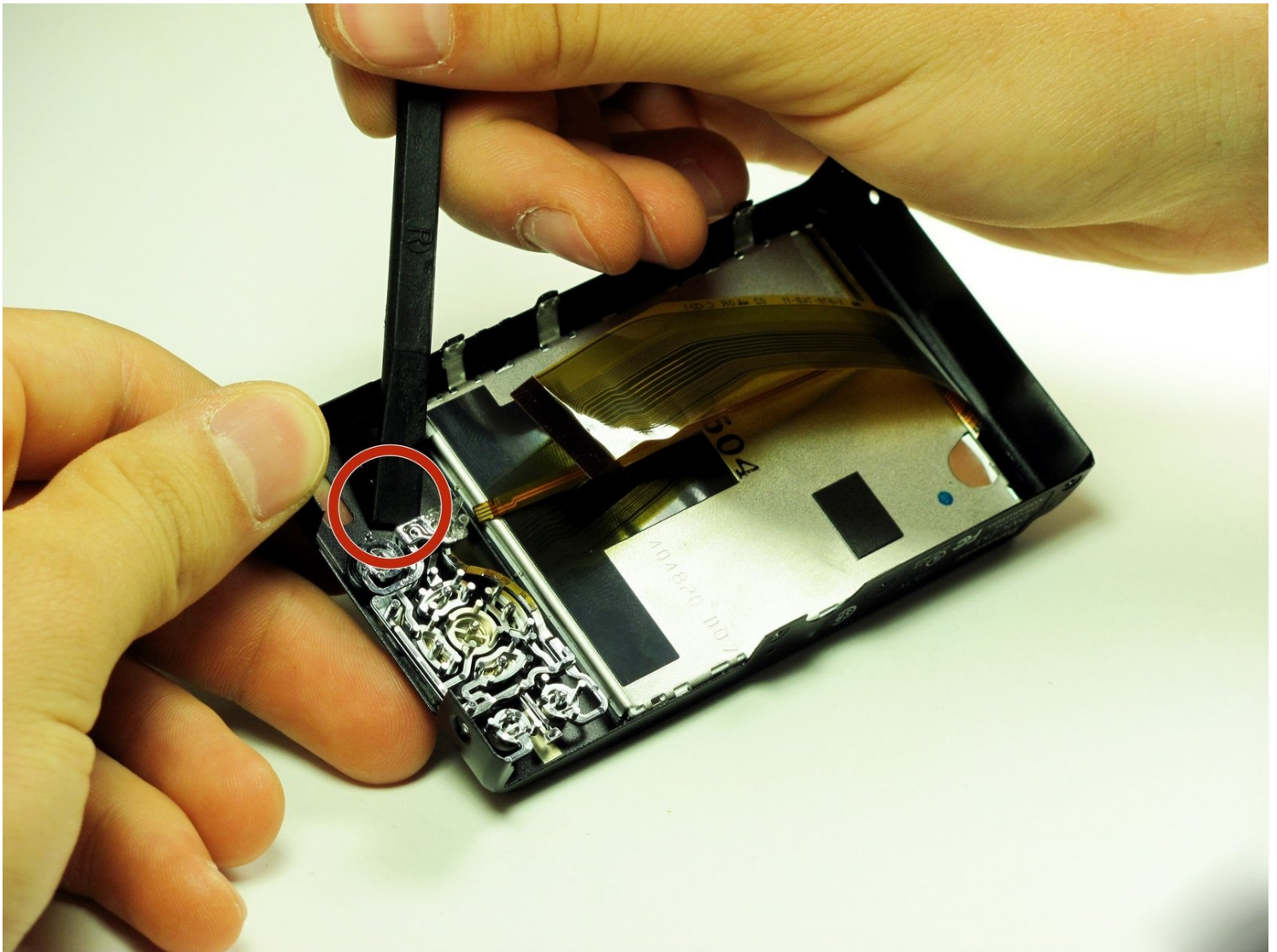




Panasonic Lumix DMC-ZS3 Back panel buttons Replacement

Written By: Juan Pablo Quinonez Weston



TOOLS:

Phillips #00 Screwdriver (1)

Spudger (1)

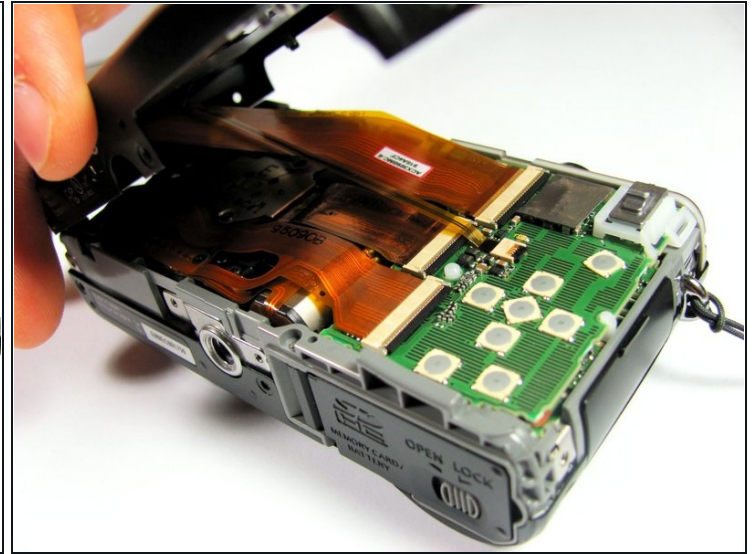
Step 1 — Back Cover



- Remove the following eleven screws securing the covers to the ZS3
 - Eleven 3 mm Phillips screws

 Using too much pressure when removing the screws may strip the screws and complicate screw removal at a later time.

Step 2



- Use the flat end of a spudger to pry apart the back cover from the rest of the unit as shown.

⚠ Be sure to carefully and slowly lift the back cover. Forcefully lifting the back cover and fully separating it at this point may ruin internal connections.

Step 3



- Using your fingernail or a spudger, flip up the ZIF locking flap on the two LCD ribbon cable sockets that connect the back cover to the rest of the unit.

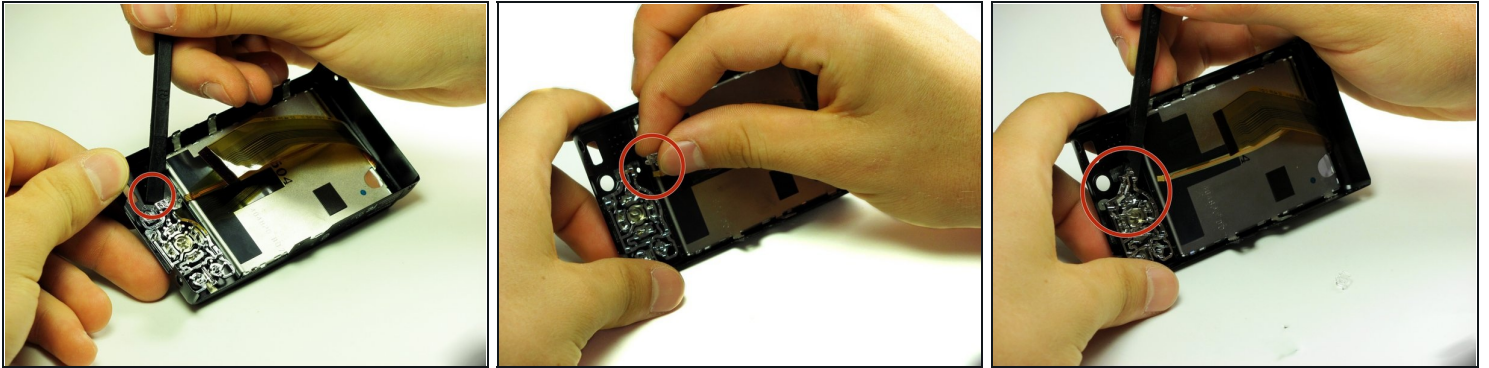
⚠ Be sure you are opening the locking tab, not pulling against the socket mounted to the board.

Step 4



- Remove the two LCD board ribbon cables out of their sockets.

Step 5 — Back panel buttons



- Use the flat end of the spudger to gently pry the buttons from the back panel.
 - Remove the buttons in three pieces, starting with the top left one, then moving to one next to it. Once this is finished remove the rest of the buttons.
- ⓘ The buttons are attached to the back cover using adhesive, and this may need to be reapplied to put them back on.
-

To reassemble your device, follow these instructions in reverse order.