



# Microsoft Lumia 650 Motherboard Replacement

A guide on how to access and remove the motherboard of the Microsoft Lumia 650.

Written By: Hayden Brown





## TOOLS:

- [T4 Torx Screwdriver](#) (1)
-

## Step 1 — Power off the device



- Press and hold the power button and swipe down to power off the device.

## Step 2 — Remove the back cover



- Remove the back cover by prying up from the bottom.
- ⓘ The back plastic is fairly bendable, but take care not to bend it too much while pulling it off the back.

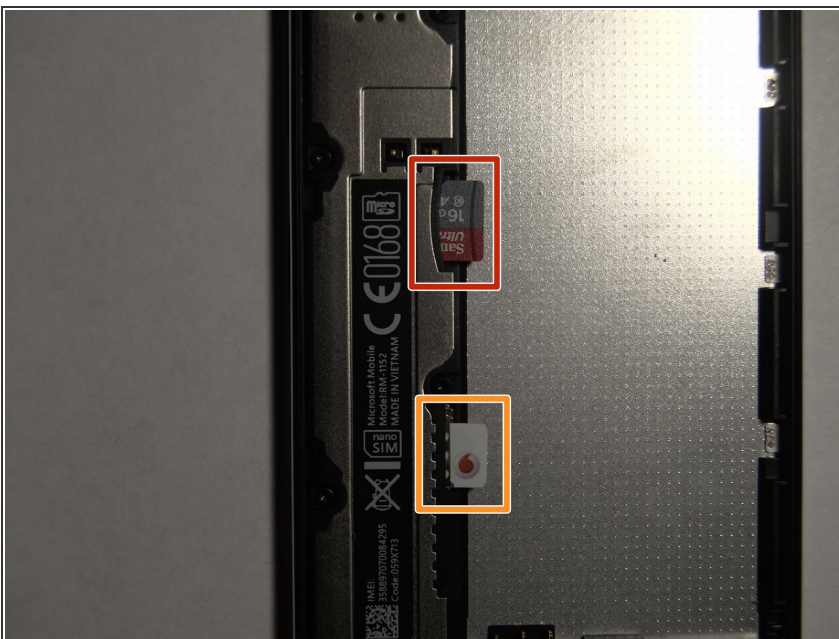


### Step 3 — Remove the battery



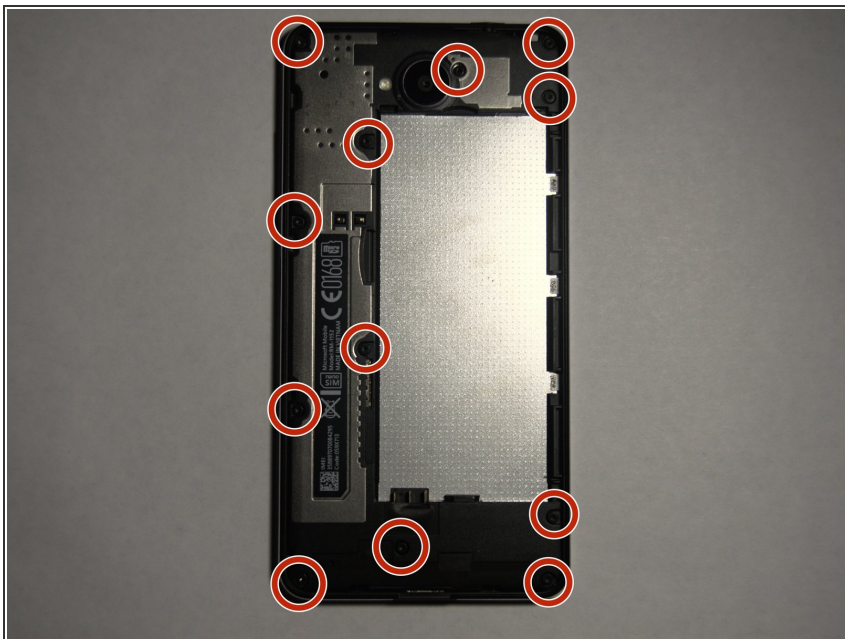
- With the back of the phone removed, lift the battery from the top and remove it.
- ⚠ Always be careful with batteries, even if they seem protected. Store it in a safe place.

### Step 4 — Remove the SIM card and SD card



- If present, remove the SIM card and the SD card from beside the battery slot.
- To remove the SD card, pull it out with your fingernail.
- To remove the SIM card, push in on it and pull it out.

## Step 5 — Remove the back screws



- Remove the 12 Torx T4 screws from the back panel of the phone.

## Step 6 — Remove the back panel

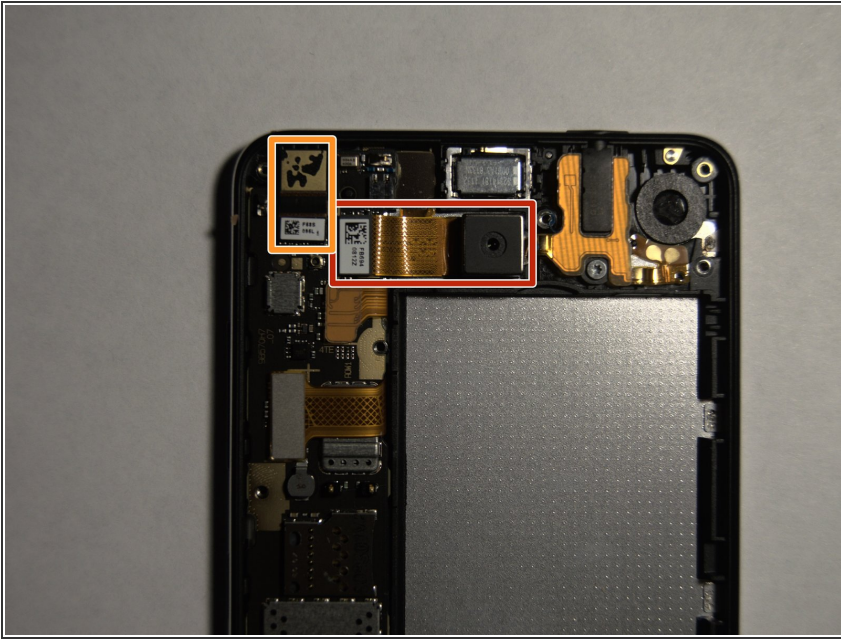


- Pry up around the panel to remove it from the phone.

⚠ There is a small clip, marked in red, just next to the battery connectors on the panel which is very easy to break.

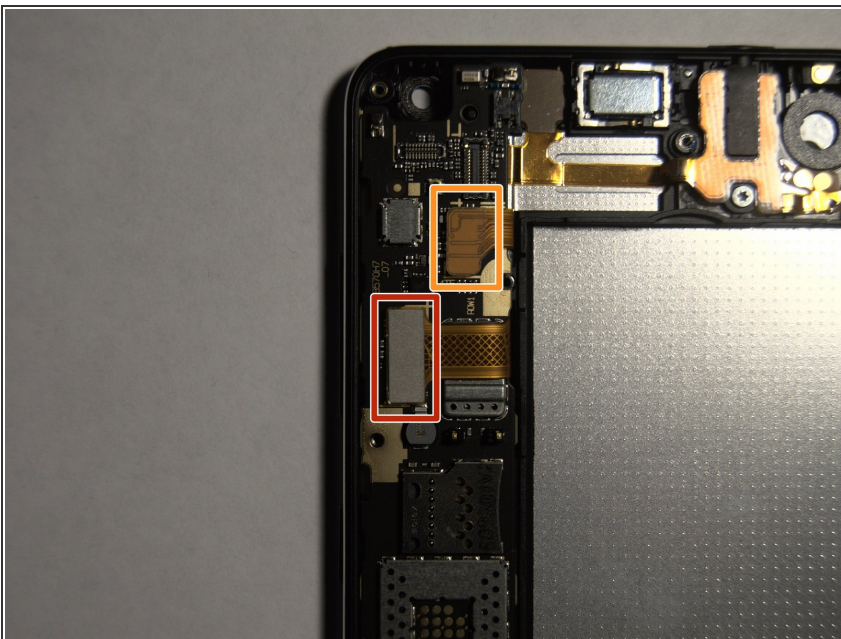


## Step 7 — Disconnect cameras



- Disconnect the cameras from the motherboard.
- Disconnect the rear-facing camera connector and remove the camera from the phone.
- Disconnect the front-facing camera connector and remove the camera from the phone. It is held in with a small amount of adhesive, but you should be able to pull it out.
- You can now replace these parts.

## Step 8 — Disconnect ribbon cables



- Disconnect the remaining ribbon cables from the motherboard.
- Disconnect the display ribbon cable.
- Disconnect the top I/O, earpiece and proximity sensor ribbon cable.

## Step 9 — Remove the motherboard



- Moving the ribbon cables to one side, you can now remove the motherboard.

To reassemble your device, follow these instructions in reverse order.