



How to Change Mortise Lock and its Cylinder

Use this guide to replace the mortise lock and...

Written By: Hikmat Guliyev



INTRODUCTION

Use this guide to replace the mortise lock and cylinder of the door lock.

Door lock details tend to deform as a result of long-term use, this can lead to the door lock becoming unusable. Hence, you may want to consider changing details like mortise lock and cylinder in order to return the door lock to a working condition.

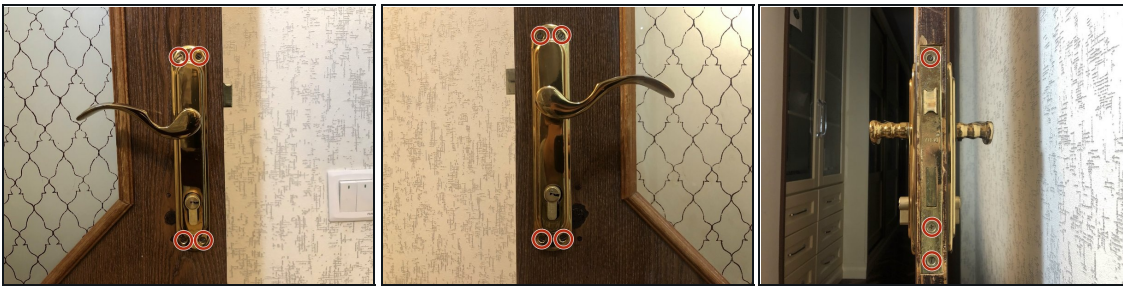


TOOLS:

6-in-1 Screwdriver (1)

Phillips #1 Screwdriver (1)

Step 1 — Mortise Lock and Cylinder



- Determine the position of the screws on both door handles and the front plate.

Step 2



- Use a flathead screwdriver to remove the eight 6 mm screws on both handles.

Step 3



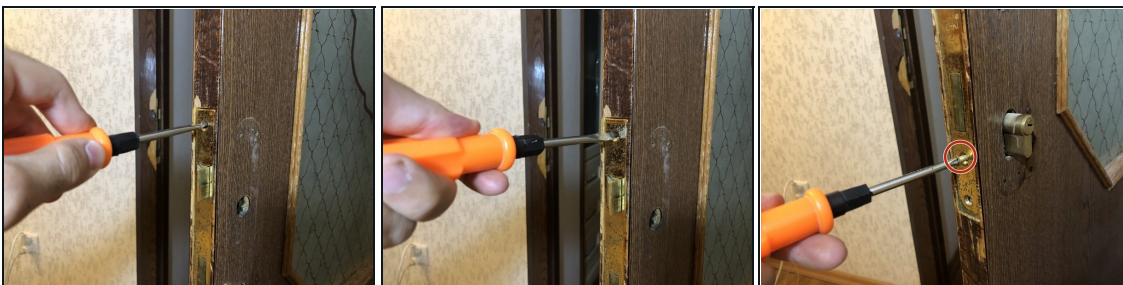
- Pull out the door handles on both sides of the door.

Step 4



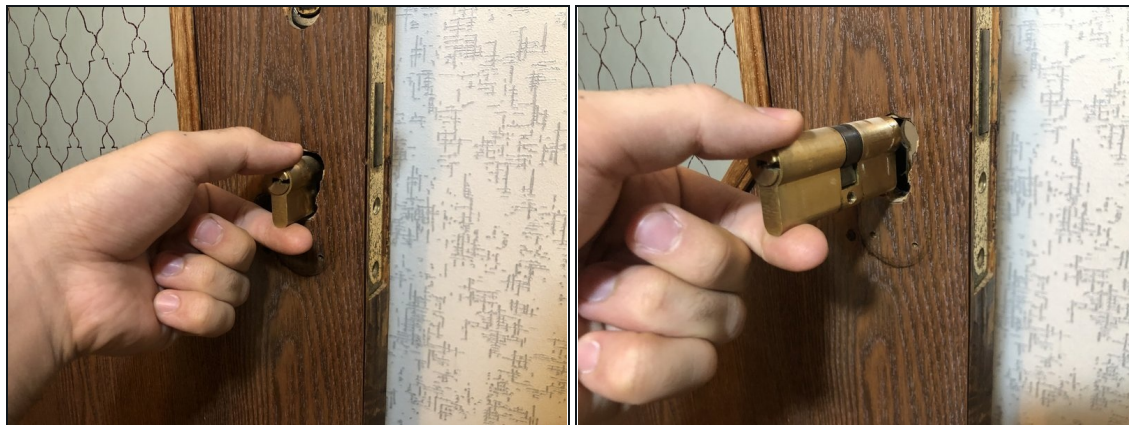
- Pull out the spindle (the rectangular piece of metal) from the door.

Step 5



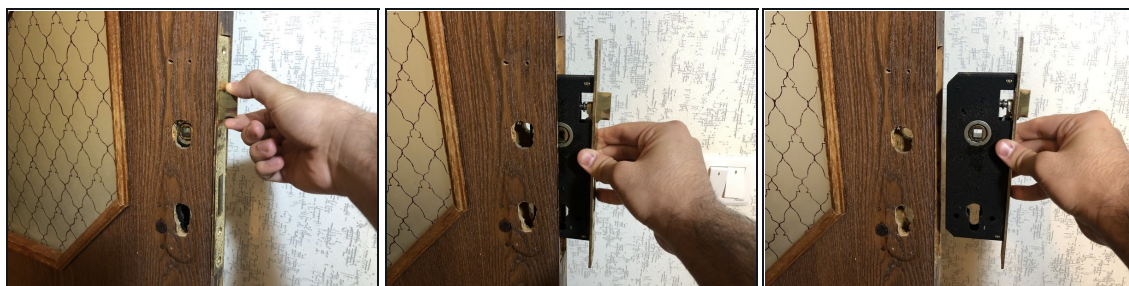
- Loosen the two 6 mm flathead screws at the top and bottom of the lock using a flathead screwdriver.
- Remove the third 6 mm Phillips screw in the middle using a Phillips #1 screwdriver.

Step 6



- Pull the lock cylinder out to either side of the door.

Step 7



- Grasp the mortise lock on either side and pull it out from the edge of the door.

To reassemble your device, follow these instructions in reverse order.