



Stainless MOEN Kitchen Faucet Handle Replacement

This how to guide will show you how to repair a detached or loose faucet handle using a MOEN faucet handle.

Written By: Anika Shahid



INTRODUCTION

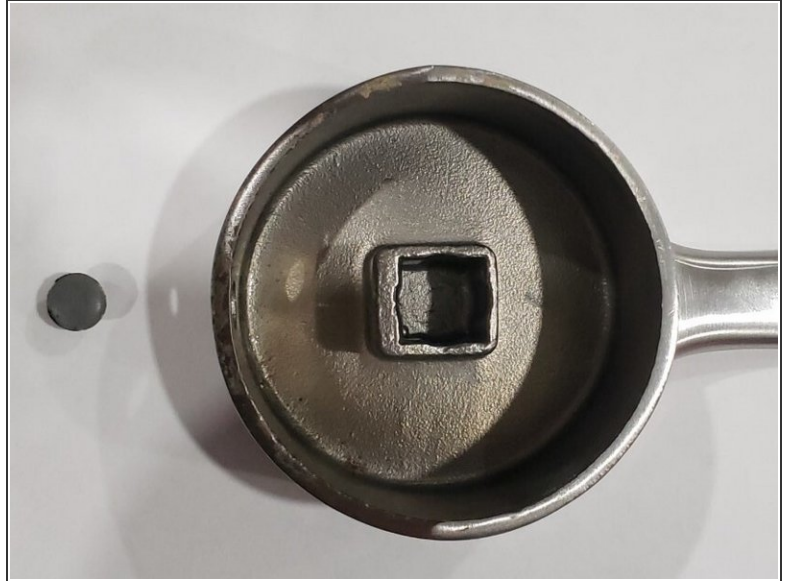
This guide shows you the process of doing a permanent repair for a detached or loose faucet handle. Faucet handles can become loose with excessive use or poor installation. I will show you how to make use of your handle with a fast, stable, and easy fix within 5-10 minutes.



TOOLS:

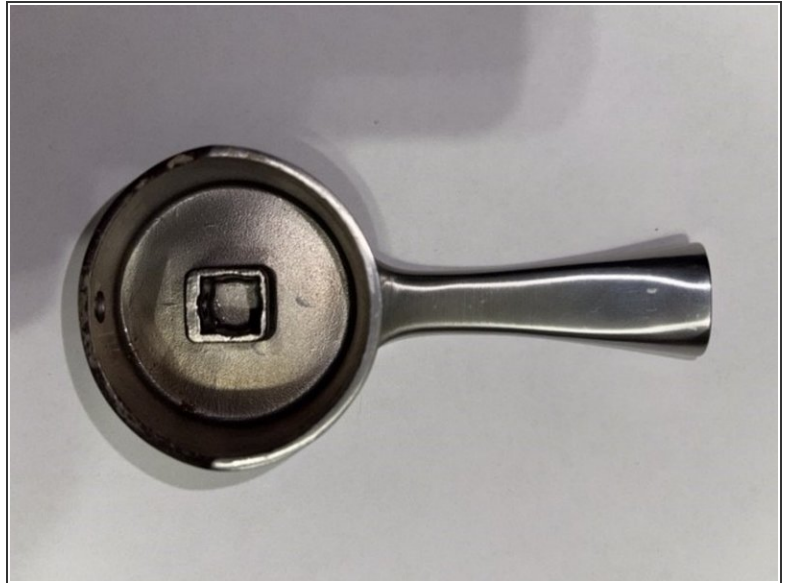
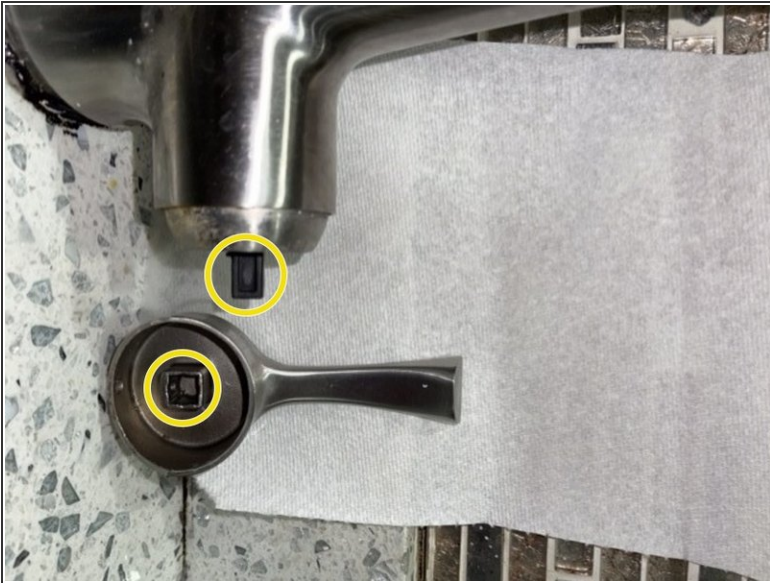
- [Paper Towels](#) (1)
 - [Phillips #0 Screwdriver](#) (1)
-

Step 1 — Handle



- Remove the sink handle, keeping in mind the orientation of the handle where it was removed—you will have to insert it back the same way.
- If the screw has not fallen out and is still inside the handle, unscrew it with a Phillips screwdriver.
- ⓘ If the screw is inside the handle's ridge keep it on the side, along with the rubber stud.

Step 2



- Dry the space inside the handle and the rod holding it in place with a paper towel.

i This will allow the screw to tighten better and not slip out.

Step 3



- Put the handle back onto the faucet spindle.
- Insert the screw into the hole inside of the handle, using the hole on the outside of the handle to tighten the screw with a Phillips #0 screwdriver.
- ⓘ The images show the knob detached from the faucet interface to show what's happening. However, your faucet handle should be attached to the faucet for these steps.
- ⚠ Sometimes, the screws are tighter than usual, in these cases if you try to screw it in, it may damage that ridge's hole. Make sure before putting the handle back onto the faucet's rod, to put the screw in to see whether or not it is a clean fit.

Step 4



- Use a Phillips screwdriver to tighten the screw using the handle's outer hole.
- ⓘ If your handle was loose and not detached, just take out your old screw with the screwdriver in counter-clockwise rotation, and replace it with a new one, following the steps mentioned.

Step 5



- Put the rubber stud in the outer hole to cover the space and secure the screw in place.

To reassemble your device, follow these instructions in reverse order.