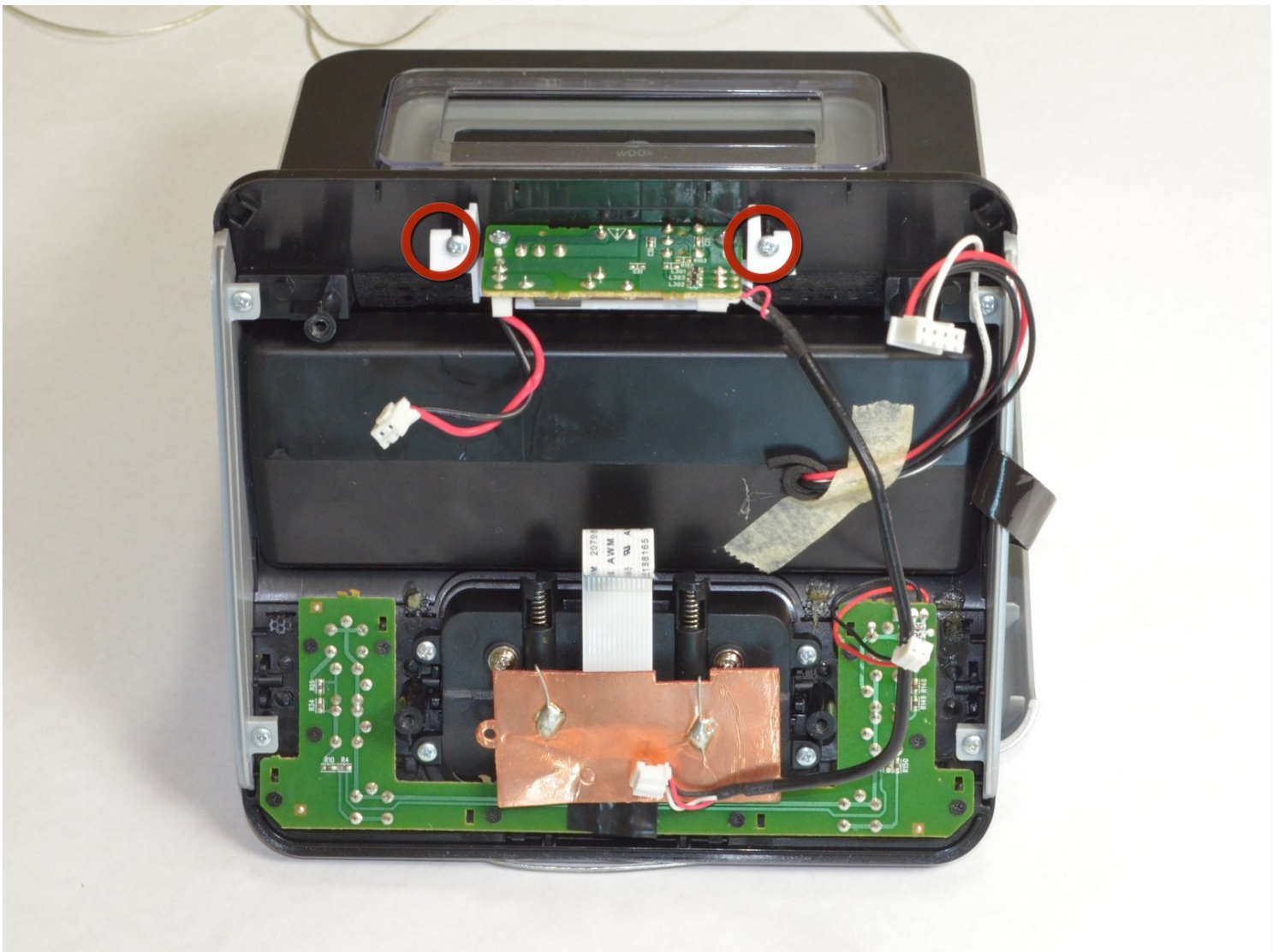




# Philips DC320 37 Headphone or Power Jack Replacement

Follow the procedure outlined in this guide to...

Written By: Graham Rolph



# INTRODUCTION

Follow the procedure outlined in this guide to remove and install a broken audio or power jack.

## TOOLS:

Phillips #00 Screwdriver (1)

Phillips #2 Screwdriver (1)

Spudger (1)

## Step 1 — Docking entertainment system



- Pry off the four white feet with the pointed end of the spudger

## Step 2



- Gently unscrew the four 15.5 mm Phillips #2 screws that hold the bottom panel to the dock.

## Step 3

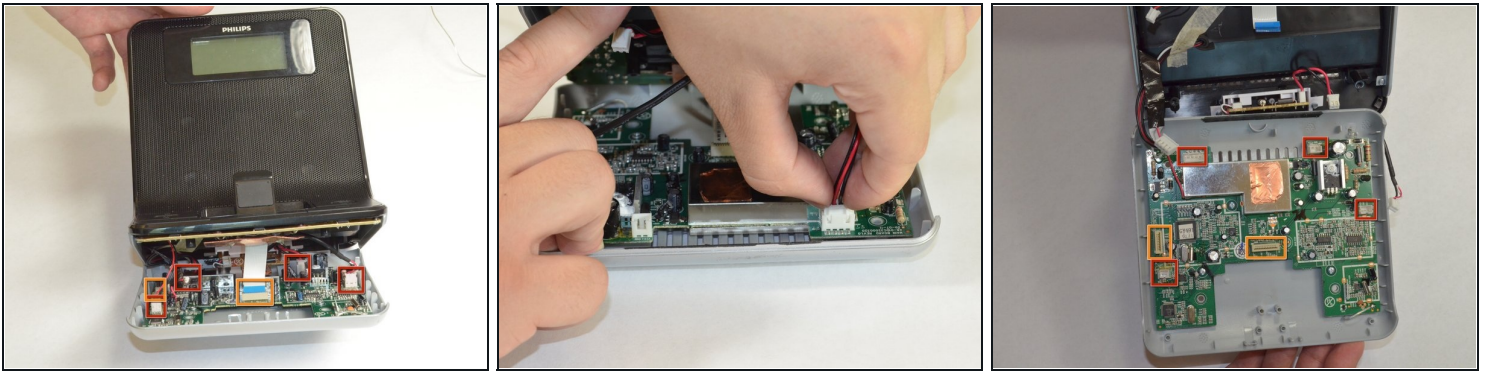


- Use the flat end of the spudger to pry the lid off from the two connectors holding it to the body of the dock.

⚠ The connectors on the panel are fragile and may break.



## Step 4



- Carefully pull up and out the four electrical connectors and two ribbon connectors that connect the bottom panel to the dock.

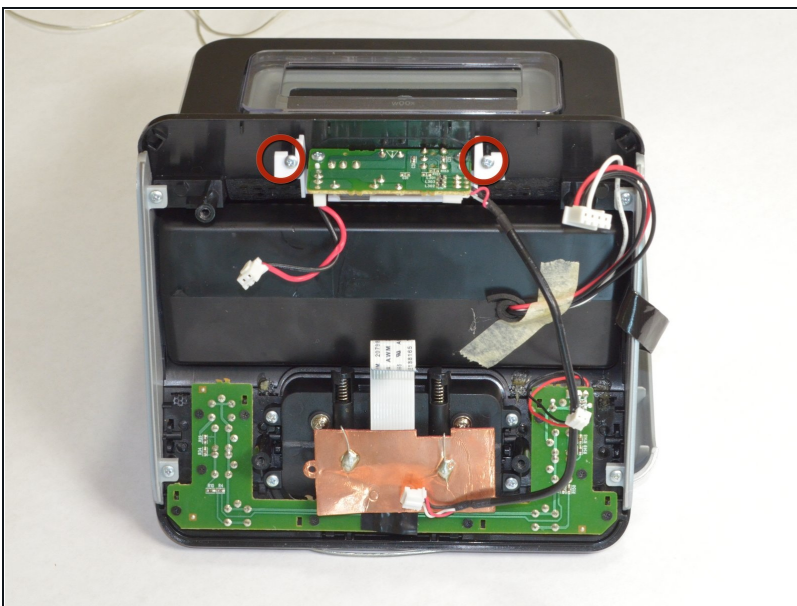
- Electrical Connectors

- Ribbon Connectors

⚠ The cables do not have a lot of slack in them. Be careful not to break the connectors.

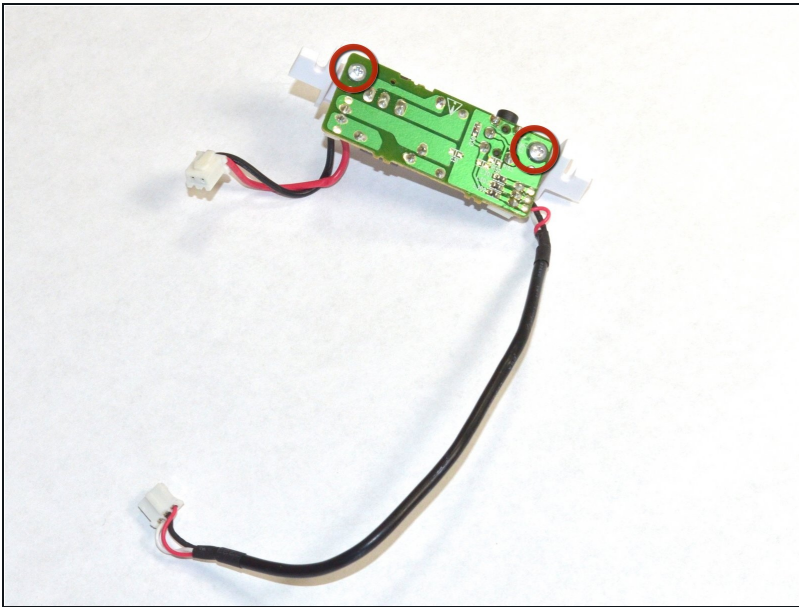
⚠ One wire is soldered onto the bottom panel. Be careful not to break this bond.

## Step 5 — Headphone or Power Jack



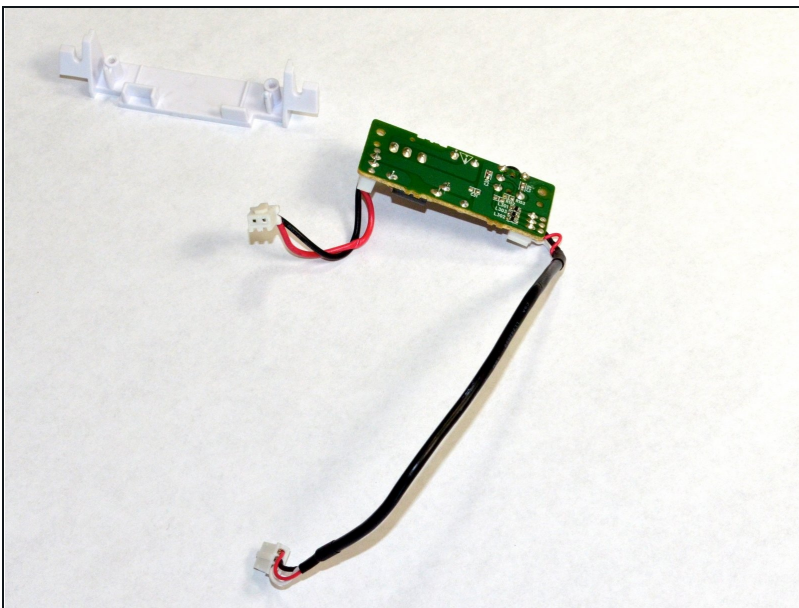
- Unscrew the two 5 mm Phillips #00 screws attaching white support bracket to the body of the device.

## Step 6



- Unscrew the two 5 mm Phillips #00 screws from green Headphone/Power electronics board to detach from white support bracket.

## Step 7



- Separate the white support bracket from the headphone/power electronics board.

---

To reassemble your device, follow these instructions in reverse order.