



How to Reattach a Broken Table Leg

How to fix broken legs on a wooden table.

Written By: Kunpriya Aggarwal



INTRODUCTION

Use this guide if you have a broken leg on a wooden table.

Tables are the most common objects used at home or the workplace. Due to extensive use, multiple adjustments and frequent movements, table legs often get loose. Furniture is quite expensive to replace and very difficult to dispose of. This guide will illustrate basic steps to fix any kind of wooden table or chair.

Prerequisite: Before using this guide, analyze the issue and find all the broken or missing parts. Please make sure to collect all the missing screws and verify the size of the screws that are required. This guide does not require any existing knowledge to fix tables.



TOOLS:

- [Super Glue](#) (1)
 - [Mastercraft Screwdrivers](#) (1)
-

Step 1 — How to Reattach a Broken Table Leg



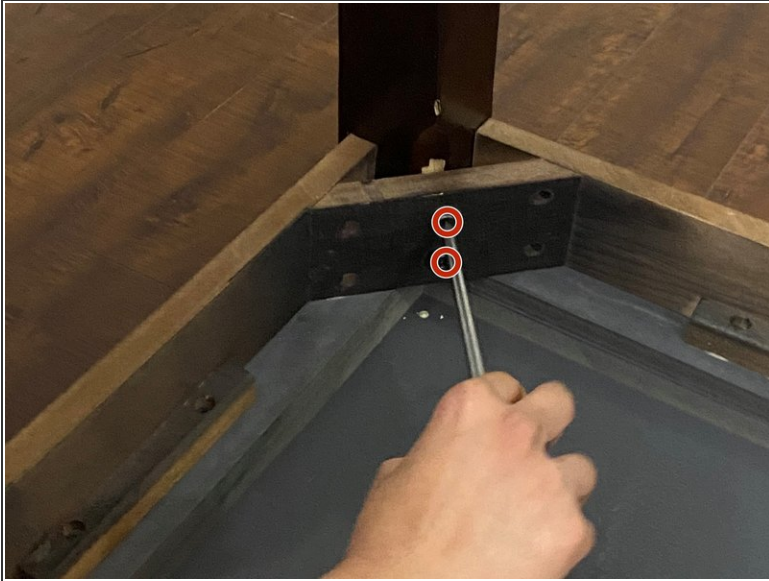
- Carefully place the table on an even surface and identify the broken parts.

Step 2



- Carefully place the table with the tabletop face down on a clean cloth or plastic cover to prevent scratching.
- ⓘ You might need some assistance depending on the size of the table.

Step 3

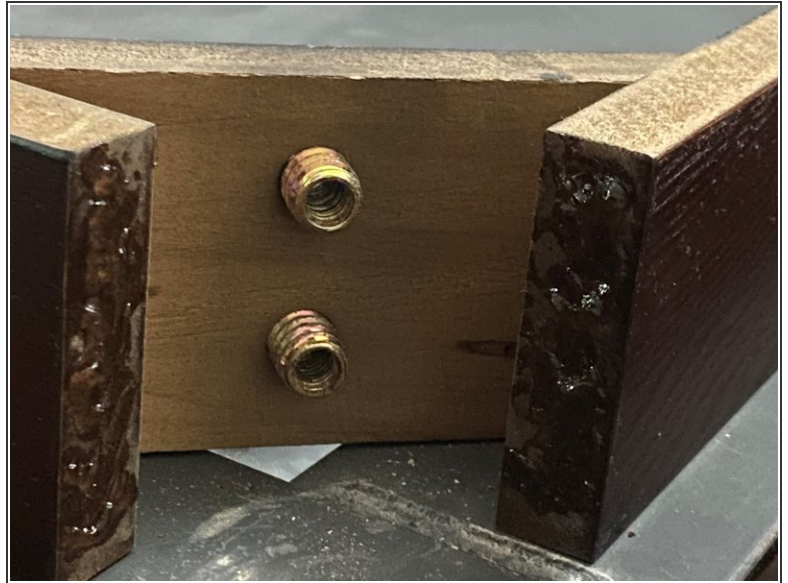
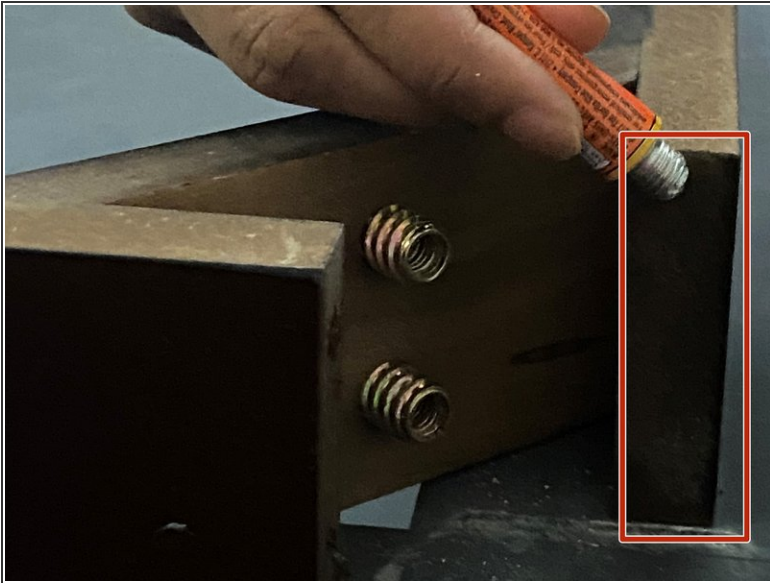


- Remove the screws from the broken leg.

i I am using a Mastercraft flathead 3 mm screwdriver in this step. Your screwdriver type will depend on the screw. Follow this [guide](#) to learn more about screwdriver types.

- Remove the broken leg.
- Use a paper towel to clean the surface of the table and legs.

Step 4



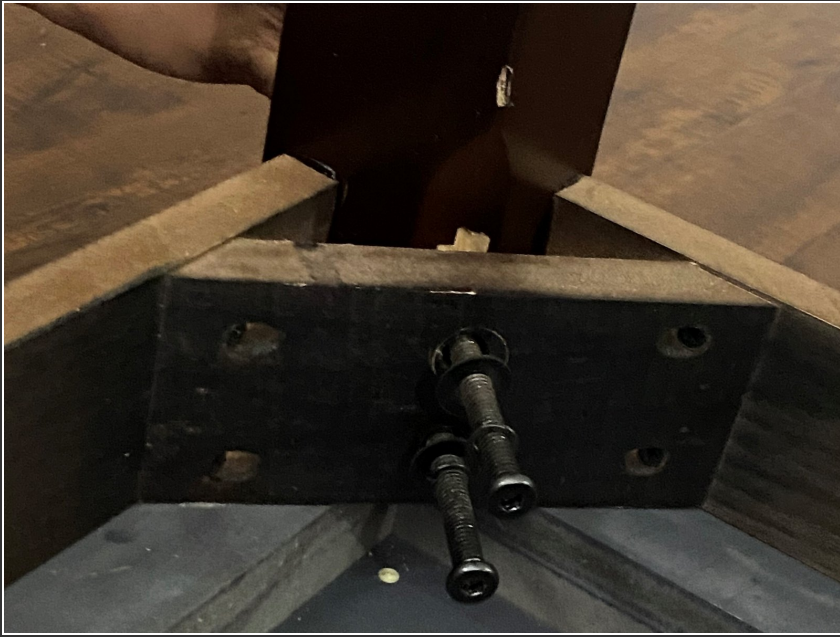
- ⚠ Caution: If you have sensitive skin, avoid direct contact with the glue and use gloves before performing this step.
- ⚠ Caution: Use adequate ventilation or wear a mask to prevent inhaling the glue fumes.
- Carefully apply the glue on the part that connects the table and legs.

Step 5



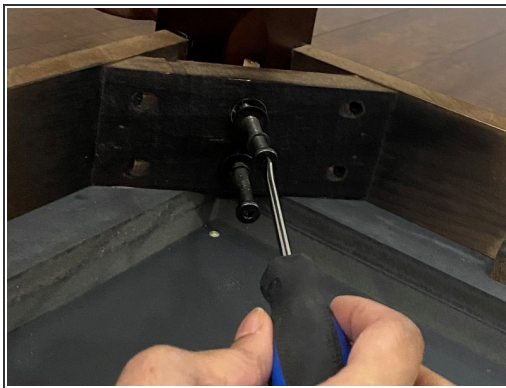
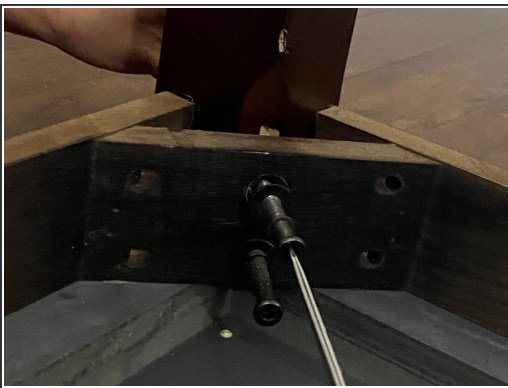
- Press the leg against the glue for few minutes.
- Allow the glue to dry for at least 10 minutes.

Step 6



- Once the glue is dry, insert the screws.

Step 7



- Use an electric drill or a screwdriver to tighten the screws.

Step 8



- Use a paper towel to remove extra glue stains.
- Allow the table to dry for 24 hours before turning the table.

Step 9



- After 24 hours, carefully return the table to the original position.
- Depending on the size of the table, you might need some assistance to turn the table.

Repeat these steps to fix any other broken legs on the table.