



How to Replace a Toilet's Shut-Off Valve

This guide hopes to educate its reader on how to successfully replace a toilet shut off valve.

Written By: Jayden Scott-Douglas



INTRODUCTION

Replacing your toilet's shut off valve is a relatively easy process that requires no prior plumbing experience at all. To ensure that your toilet valves needs replacing make sure that it is leaking, by rotating the toilet shut-off valve counter clockwise.



TOOLS:

- [Adjustable Wrench](#) (1)



PARTS:

- [Toliet shut off valve](#) (1)

Step 1 — Shut-Off Valve



- Locate the water main line (typically found in your basement).
- Turn off the water main line by rotating the knob clockwise.

Step 2



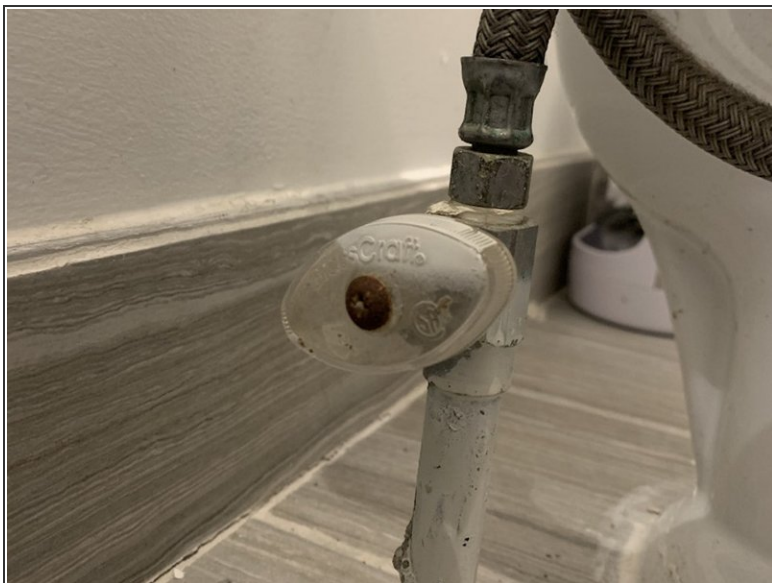
- Go to the lowest level of your house and turn the faucet on at any sink.
- ❗ Keep the faucet running until it stops spewing water. If the faucet doesn't stop, you likely turned the wrong valve in Step 1.

Step 3



- Flush the toilet (the one that needs the valve to be replaced).

Step 4



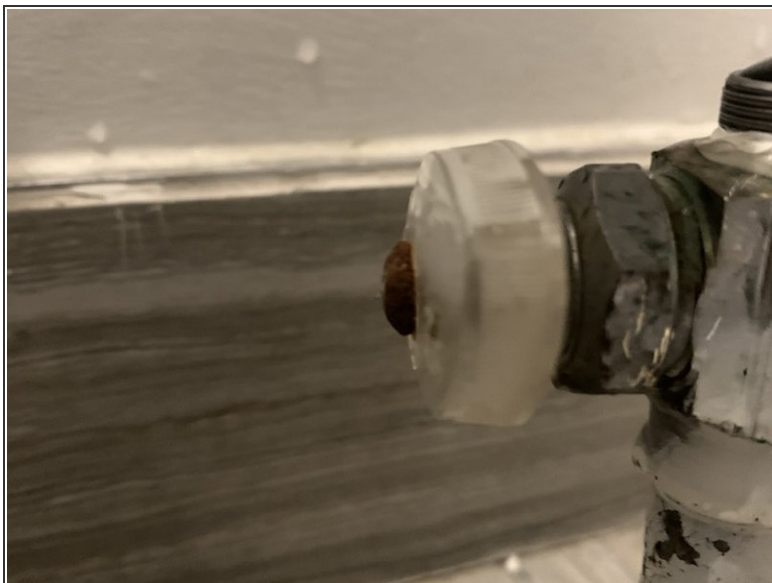
- Turn the toilet shut off valve counter clockwise.

Step 5



- Using the wrench, disconnect the tank hose from the pipe by turning the wrench clockwise until the hose is completely disconnected from the pipe.

Step 6



- Rotate the toilet shut-off valve clockwise with the wrench until the valve comes off from the pipe.
- Slide the new valve onto the pipe and tighten the valve onto the pipe with the wrench.
- Using the wrench reconnect the hose to the pipe by rotating the wrench counter clockwise.
- Turn the water main on rotating the knob counter clockwise.