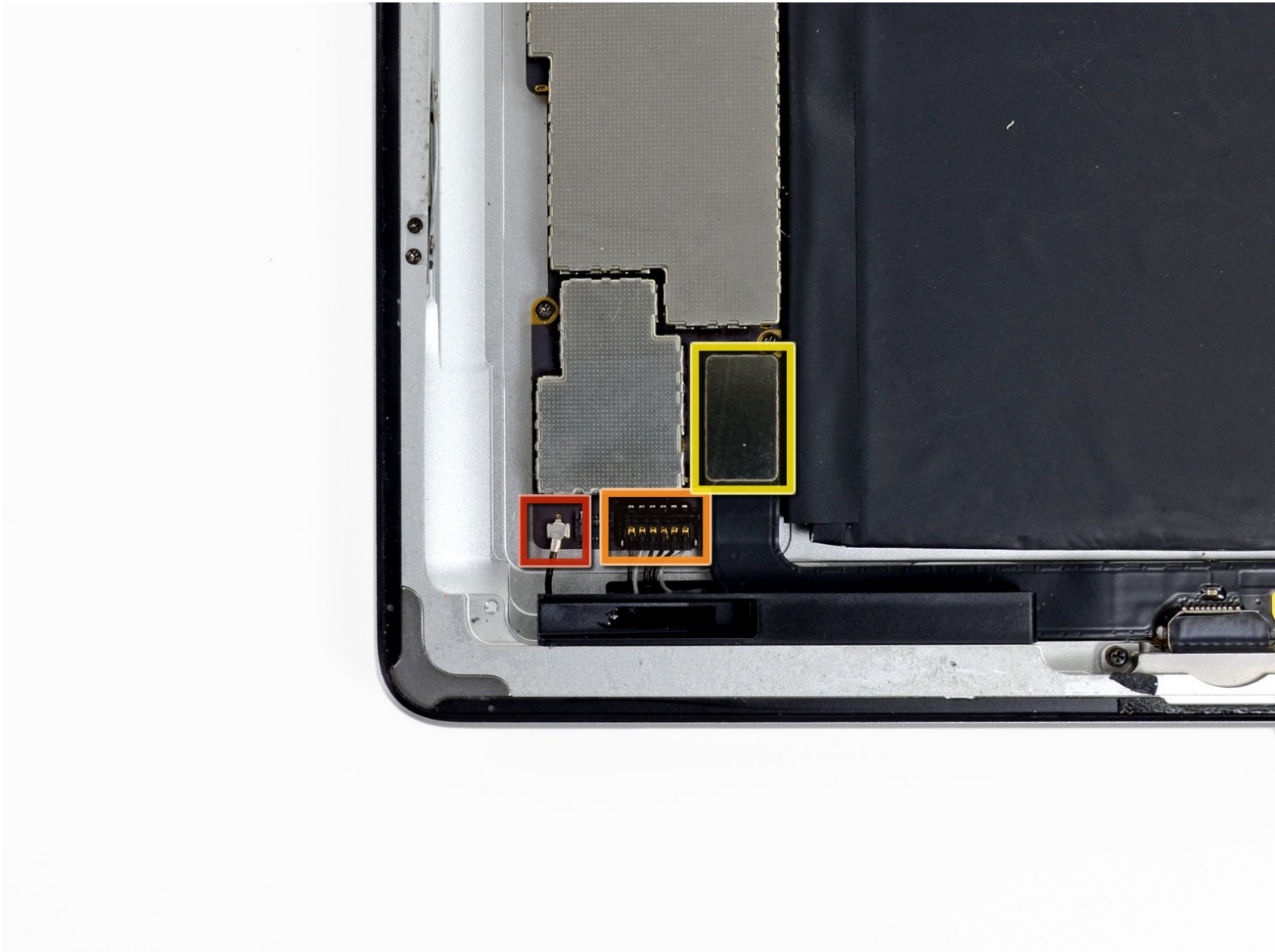




# iPad 4 CDMA Logic Board Connectors Replacement

Prereq only.

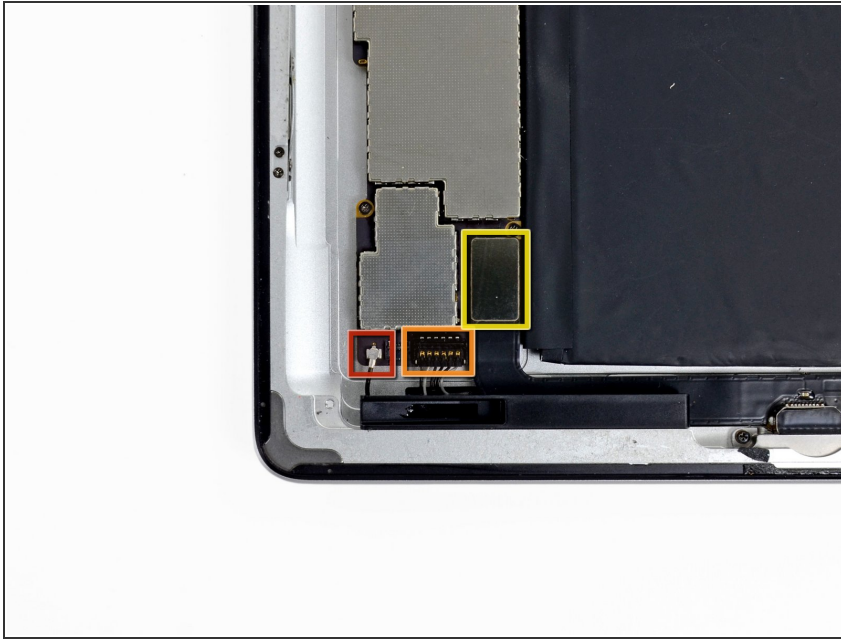
Written By: Walter Galan



# INTRODUCTION

Prereq only.

## Step 1 — Logic Board Connectors



- Disconnect the following connectors from their respective sockets on the logic board:

- Wi-Fi antenna cable
- Speaker connector cable.
- Dock/Lightning connector cable.
  - ⓘ There may be a piece of black tape covering this connector. Remove it with tweezers.

⚠ Make sure to pry underneath the connector and not the socket itself. Prying on the socket itself may cause severe damage.

To reassemble your device, follow these instructions in reverse order.