



Razer Kishi Phone Connector Replacement

Use this guide to replace a damaged phone...

Written By: Adriana Zwink



INTRODUCTION

Use this guide to replace a damaged phone connector on the right side of your Razer Kishi.

TOOLS:

- [Tri-point Y0 Screwdriver](#) (1)
 - [iFixit Opening Picks \(Set of 6\)](#) (1)
 - [Phillips #0 Screwdriver](#) (1)
 - [Spudger](#) (1)
 - [ESD Safe Tweezers Blunt Nose](#) (1)
 - [Phillips #00 Screwdriver](#) (1)
-

Step 1 — Remove the screws



i The opening process is the same on both sides. For simplicity, this guide shows only the right-side opening process. Unscrew whichever side you wish to open and work on.

- For the right side, remove the five Y0 screws securing the right side of the controller.
 - Four 9.2 mm screws
 - One 7.2 mm screw
- If you wish to open the left side, remove the five Y0 screws securing the left side of the controller.
 - Four 9.2 mm screws
 - One 7.2 mm screw

Step 2 — Release the bottom edge clips



i Both cases are held together by plastic clips.

- Insert an opening pick in the seam between the top and bottom case, at the bottom left corner of the controller.
- With the pick still in the seam, slide it along the bottom edge to the bottom right corner to loosen the plastic clips.

Step 3 — Release the side edge clips



- Slide the opening pick along the right edge to loosen the plastic clips.

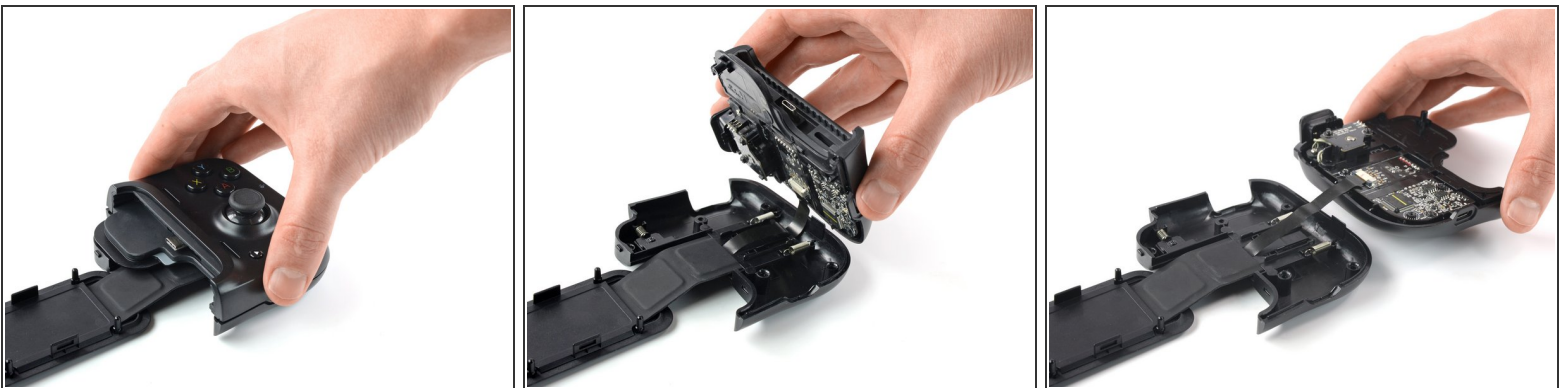
Step 4 — Release the top edge clips



- Slide the opening pick along the top edge to loosen the remaining plastic clips.

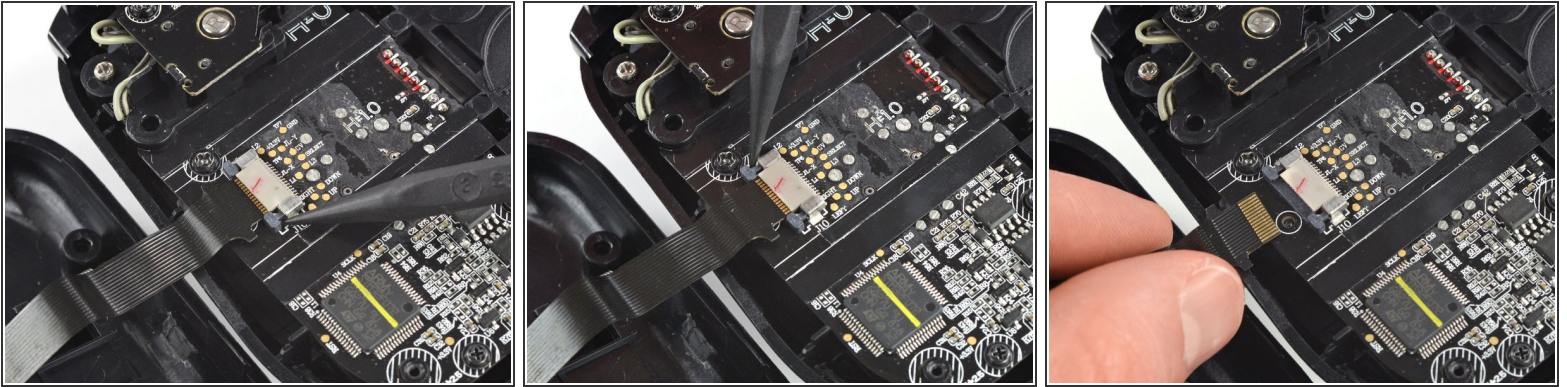
⚠ Don't try to remove the top side yet, the case is still connected to the board.

Step 5



- Carefully lift the top side and unfold it to the right, like a book.

Step 6 — Disconnect the interconnect cable



- Using the pointed end of a spudger, push the grey tabs on the interconnect socket away from the socket, parallel to the interconnect cable, to release the cable.
- Pull the cable out of the socket.

Step 7 — Remove the screws



- Use a Phillips #0 screwdriver to remove the two 4.4 mm-long screws securing the trigger board.

Step 8 — Remove the breakout board



⚠ The breakout board is plugged in. When removing breakout board, it is important to pull it straight out to avoid bending the connectors.

- Remove the breakout board by lifting it straight up, away from the controller.

Step 9 — Remove the screws



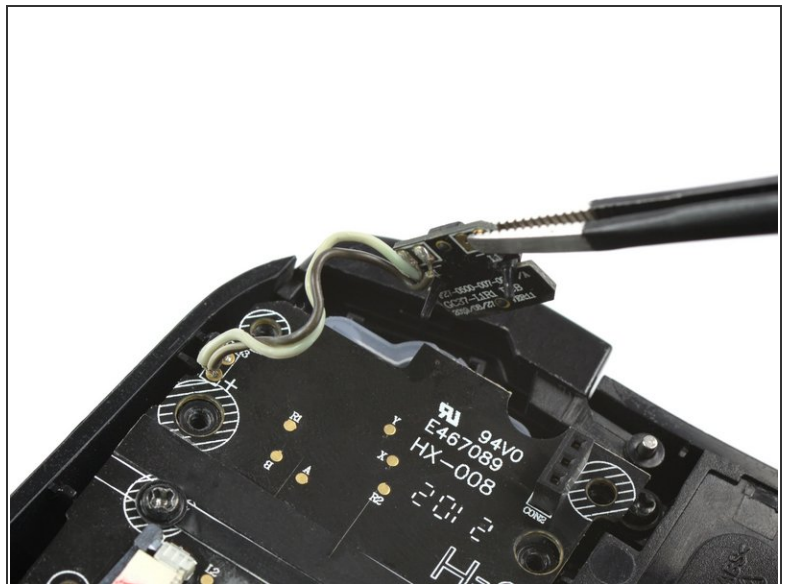
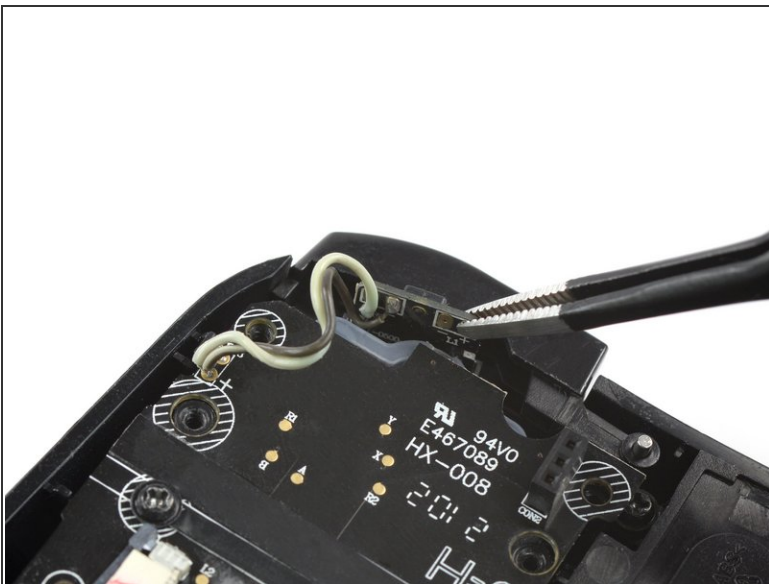
- Use a Phillips #0 screwdriver to remove the two 7.0 mm-long screws securing the trigger.

Step 10 — Remove the trigger



- Remove the shoulder trigger.

Step 11 — Lift the shoulder button board



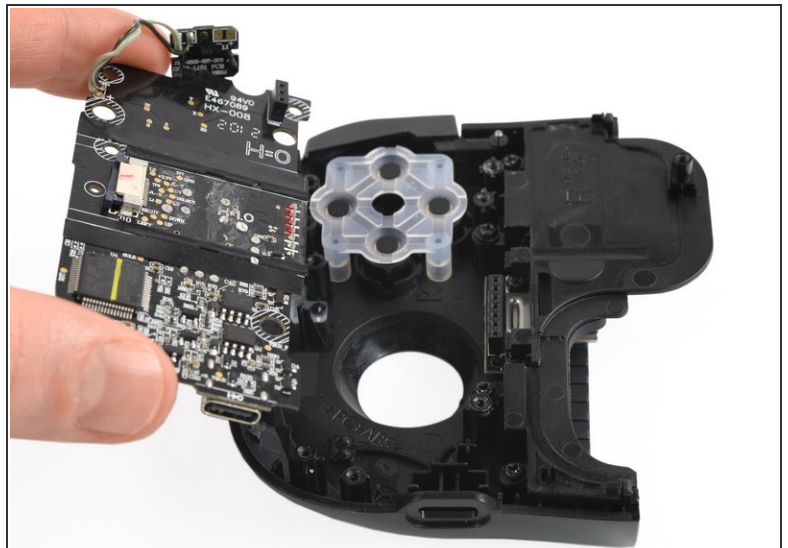
- Use a pair of blunt nose tweezers to lift out the shoulder button board.

Step 12 — Remove the screws



- Use a Phillips #0 screwdriver to remove the two 5.9 mm-long screws.

Step 13 — Remove the board



- Pull the mainboard straight out of the frame to remove it.

Step 14 — Unfasten screws



- Use a Phillips #00 screwdriver to remove the four 5.7 mm screws securing the phone bracket.

Step 15 — Remove the phone bracket



- Remove the phone bracket.

Step 16 — Remove the rubber phone pad



- Use your fingers to lift the rubber phone pad out sideways.

Step 17 — Unfasten the screws



- Use a Phillips #00 screwdriver to remove the two 4.6 mm screws securing the phone connector.

Step 18



- Thread the phone connector through its opening in the side of the controller.
- Remove the phone connector.

To reassemble your device, follow these instructions in reverse order.

Take your e-waste to an [R2 or e-Stewards certified recycler](#).

Repair didn't go as planned? Try some [basic troubleshooting](#), or ask our [Answers community](#) for help.