



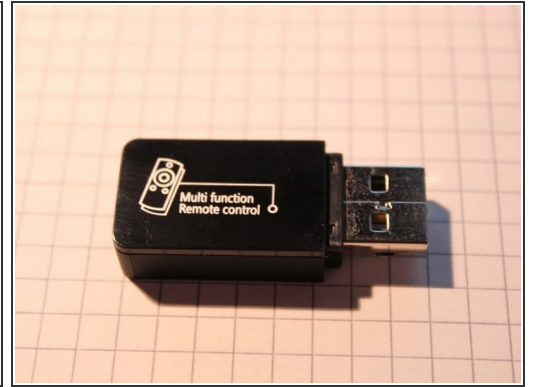
Mele F10 - USB Remote Teardown

We will take a quick look inside Fly-Mouse from Mele

Written By: Adam

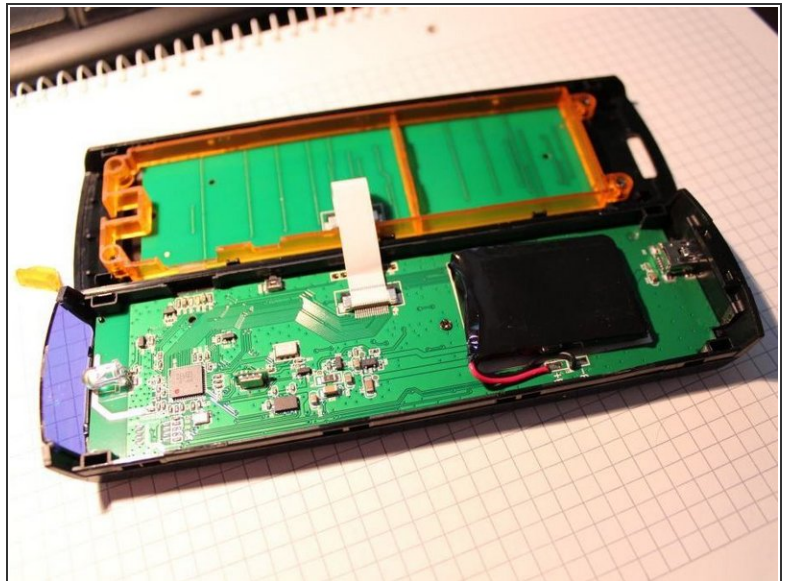


Step 1 — Mele F10 - USB Remote Teardown



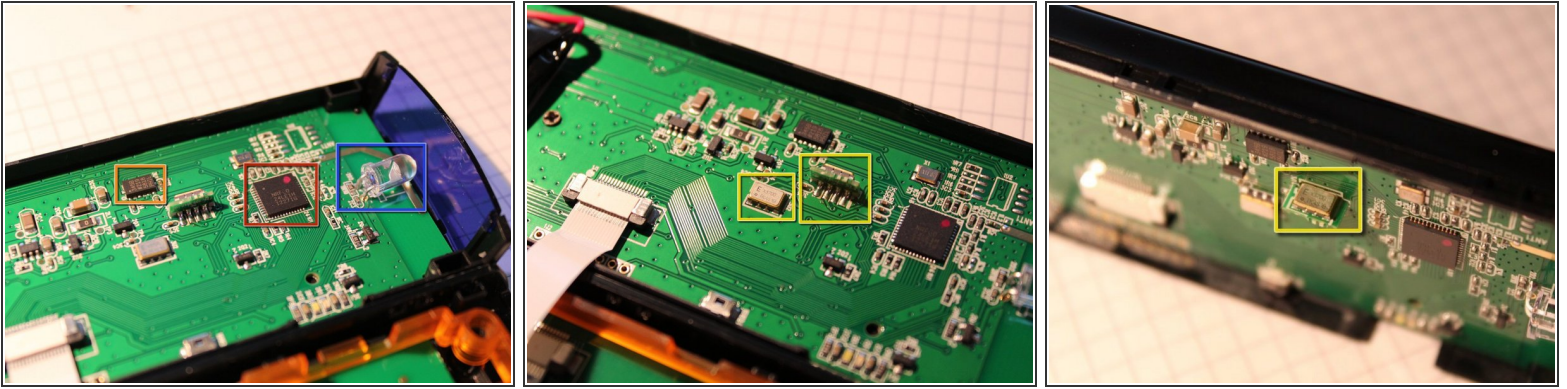
- 2.4GHz wireless frequency
- Max. control range: 30 meters
- IR remote range: 10 meters
- Built-in 500mAh battery

Step 2



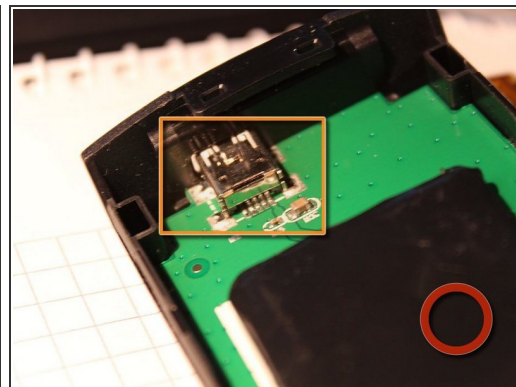
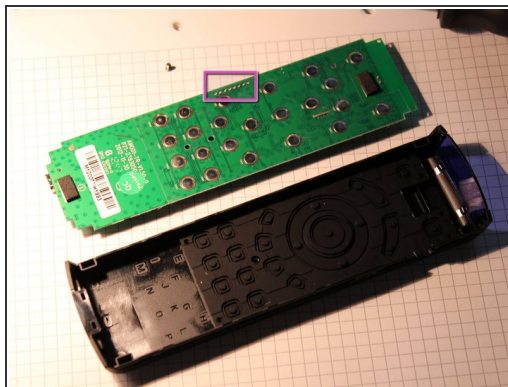
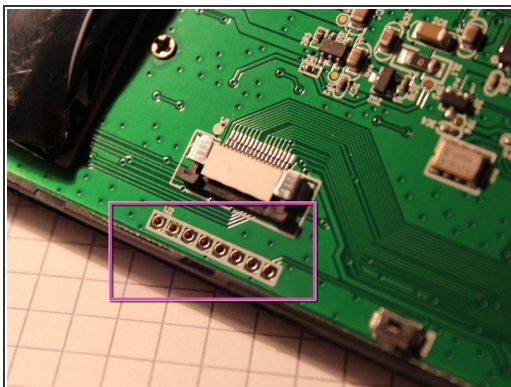
- There is no screws. I have opened remote only by hands by bending edges

Step 3



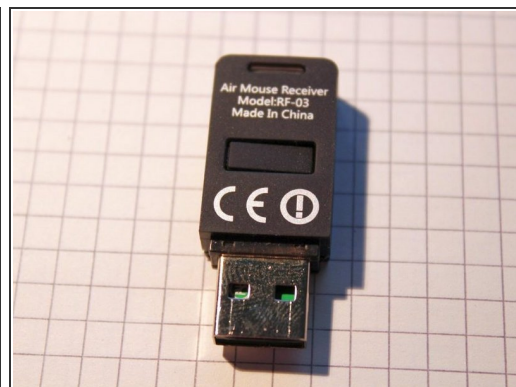
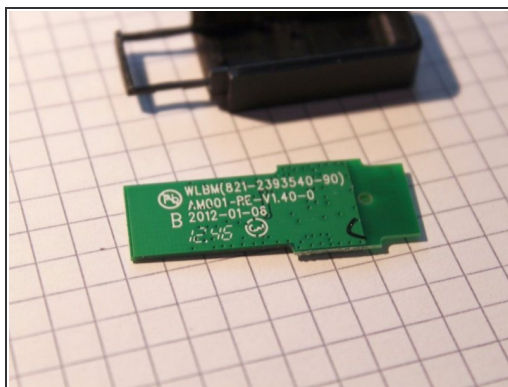
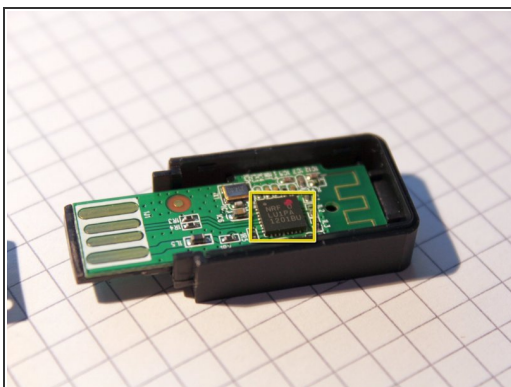
- OK! let see what parts we have inside
- **nRF24LE1** - Ultra-low Power Wireless System On-Chip Solution
- **ADXL345** - small, thin, ultralow power, 3-axis accelerometer with high resolution (13-bit) measurement at up to $\pm 16g$
- Two **XV - 3700CB** Ultra miniature size gyro sensor with high stability double output
- IR TX diode

Step 4



- More parts
- JTAG ?
- Mini-USB port - as far as I know can be used only to charging
- 500mAh battery

Step 5



- USB Receiver
- **nRF24LU1** - Single Chip 2.4 GHz Transceiver with USB Microcontroller and OTP Memory

To reassemble your device, follow these instructions in reverse order.