



Power Cord Removal

How to remove the power cord on an EDCO Floor Stripper model TS8 .75L.

Written By: Robert Boyd



INTRODUCTION

This is a prerequisite-only guide! This guide is part of another procedure and is not meant to be used alone.

Follow this guide to remove the power cord on an EDCO Floor Stripper model TS8 .75L (2017).



TOOLS:

- [Phillips #1 Screwdriver](#) (1)
 - [3/8" Socket](#) (1)
 - [11/32" Socket](#) (1)
 - [Flathead Screwdriver](#) (1)
 - [Adjustable Wrench](#) (1)
-

Step 1 — Safety precautions



⚠ Before you begin, ensure the device is powered down and cool to the touch.

- Ensure the machine is unplugged.
- Turn the power switch counterclockwise into the **OFF** position.

Step 2 — Remove the screw from the red knob



- Use a Phillips screwdriver to remove the screw from the center of the red on/off knob.

Step 3 — Remove the knob



- Remove the red knob.

☑ This component is keyed. During reassembly, ensure it is reinstalled in the correct orientation.

Step 4 — Remove the black cap



- Remove the black plastic cap from the center of the switch assembly.

☑ This component is keyed. During reassembly, ensure it is reinstalled in the correct orientation.

Step 5



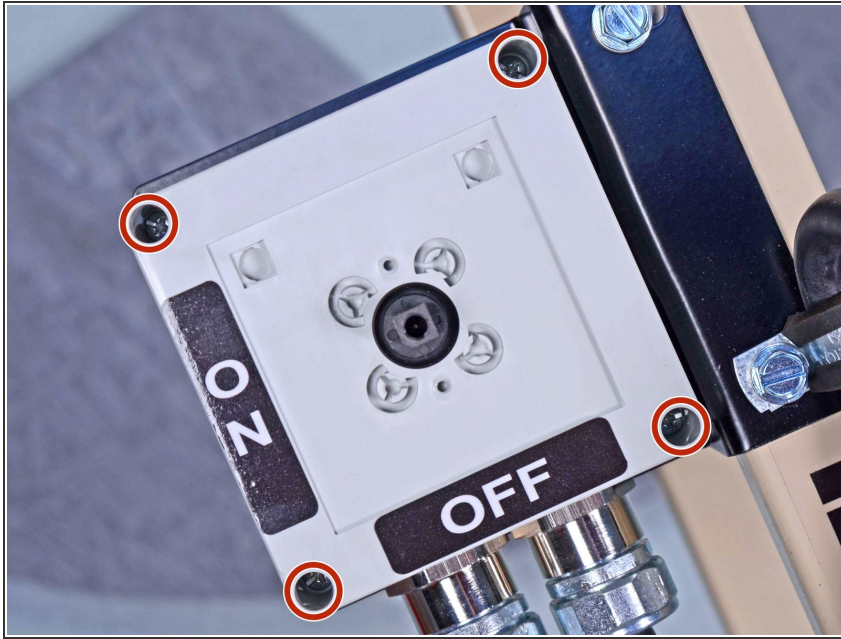
- Use a Phillips screwdriver to remove the two screws securing the yellow switch guide to the switch assembly.
- ☑ During reassembly, ensure this component is installed in the same orientation, with the circle in the 6 o'clock **OFF** position.

Step 6



- Remove the yellow switch guide from the switch assembly.
- Remove the black plastic spacer from underneath the yellow switch guide.

Step 7 — Remove the upper switch housing



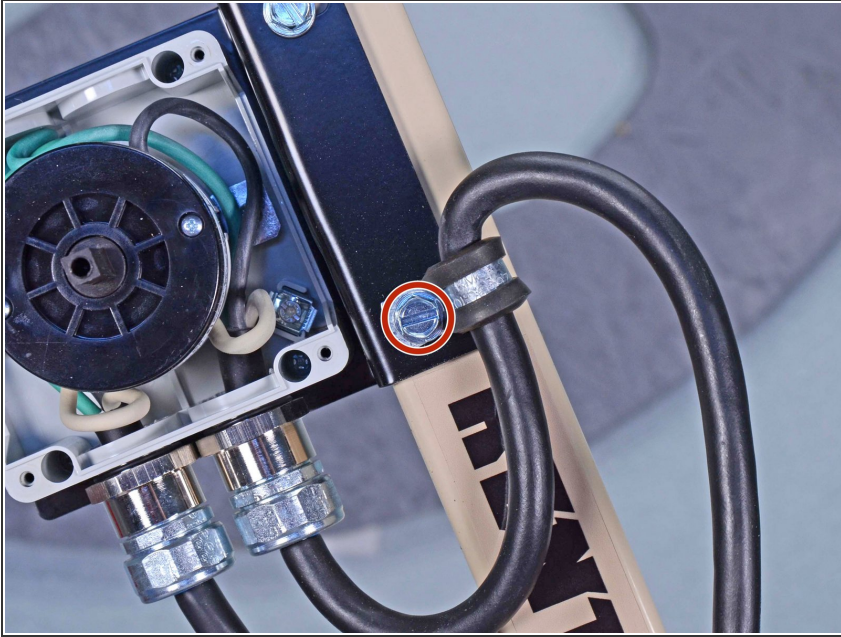
- Use a Phillips screwdriver to remove the four screws securing the upper half of the switch housing to the lower half.
- ⓘ These screws may not come out of their recesses in the housing once they are completely unthreaded. If some stay inside once loose, don't lose track of them.

Step 8



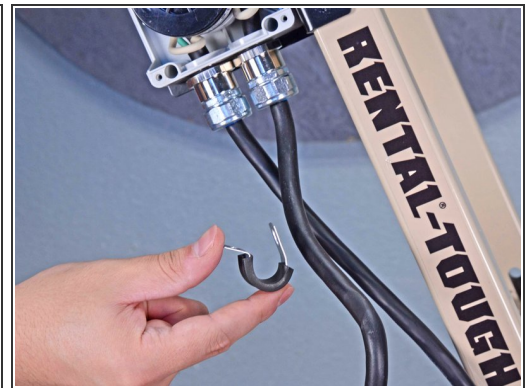
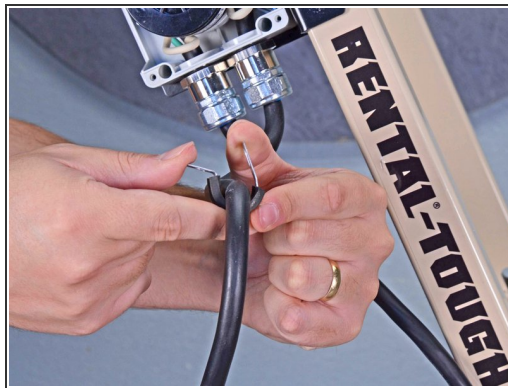
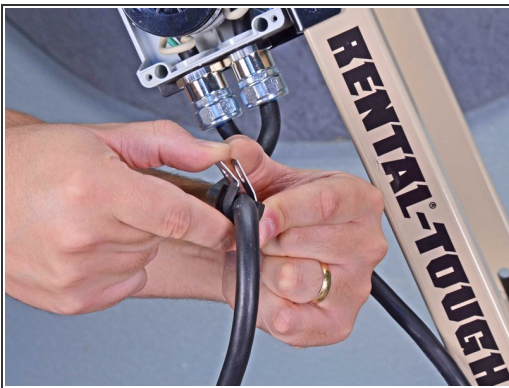
- Lift the upper half of the switch housing off of the lower half."
- ★ The [rubber gasket](#) may fall out of the upper housing during the removal process. Do not forget to reinstall the gasket upon reassembly.

Step 9 — Disconnect the power cord from the frame



- Use a 3/8 inch socket to remove the bolt securing the power cord loom clamp to the switch bracket.

Step 10 — Remove the loom clamp



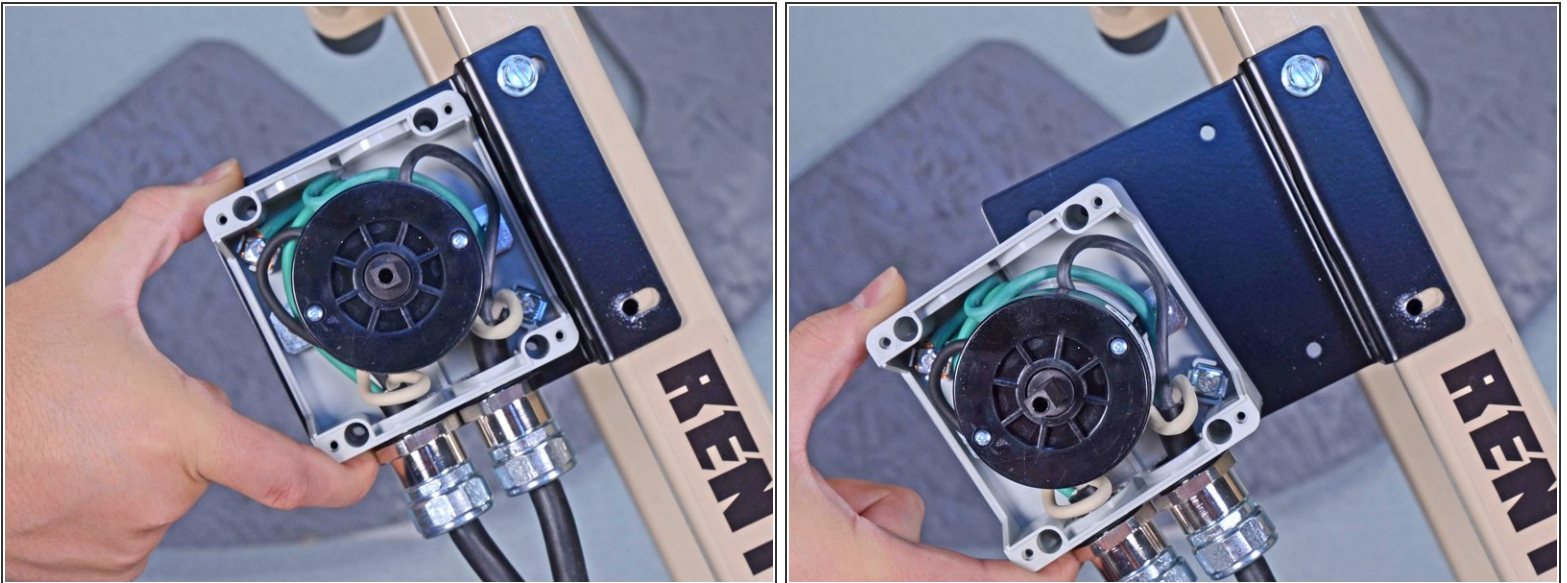
- Remove the loom clamp from the power cable.

Step 11 — Remove the switch housing



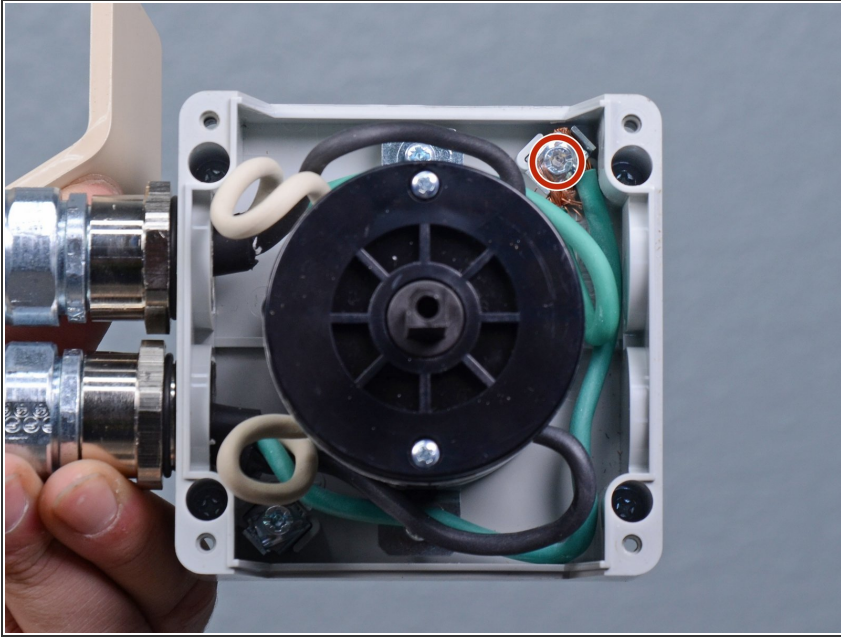
- Use a socket to remove the four 11/32 inch nuts from the on/off switch bracket.
- ☞ During reassembly, use a Phillips screwdriver in combination with the 11/32 inch socket wrench to tighten the bolts securing the switch to the bracket."

Step 12



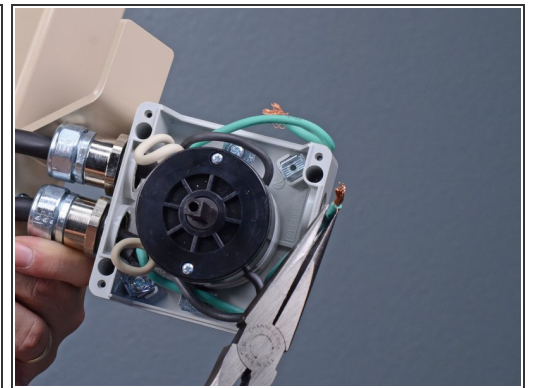
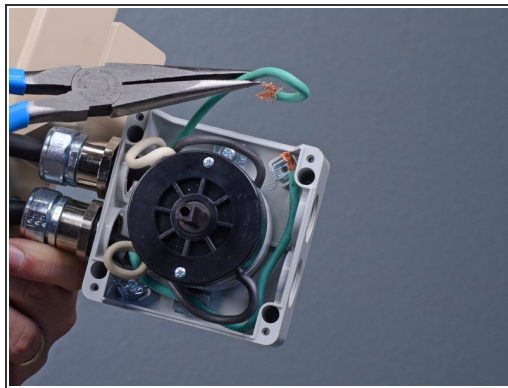
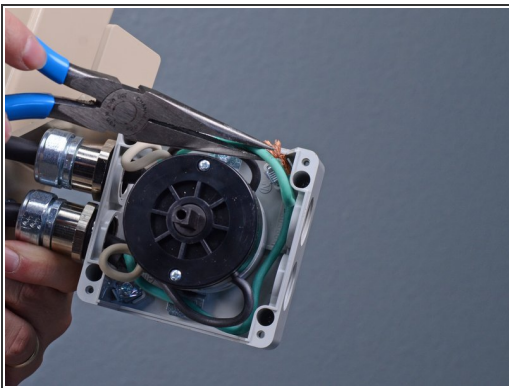
- Lift the switch assembly off of the switch bracket.
- ⓘ The switch housing bolts may fall out when you remove the housing.

Step 13 — Disconnect the green wires



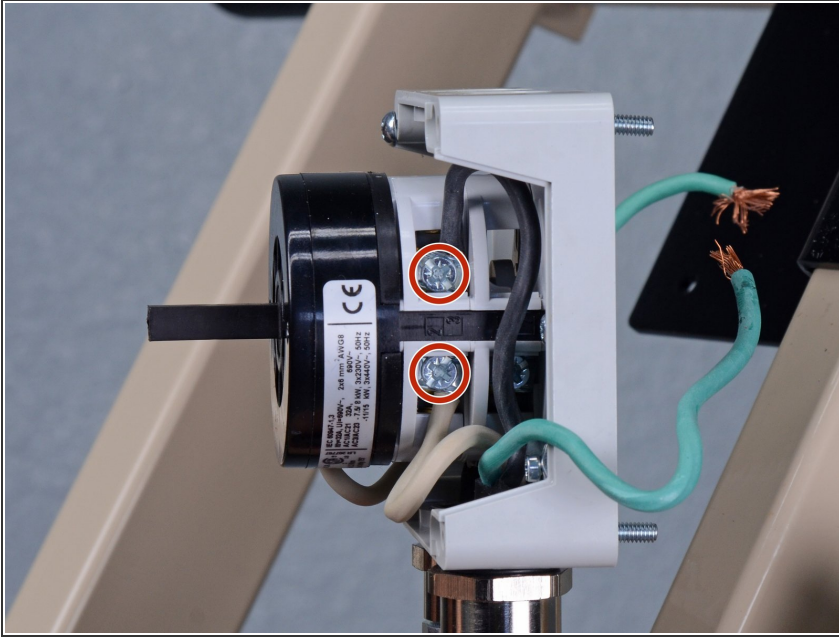
- Use a flathead screwdriver to remove the screw securing the two green ground wires to the switch housing.

Step 14



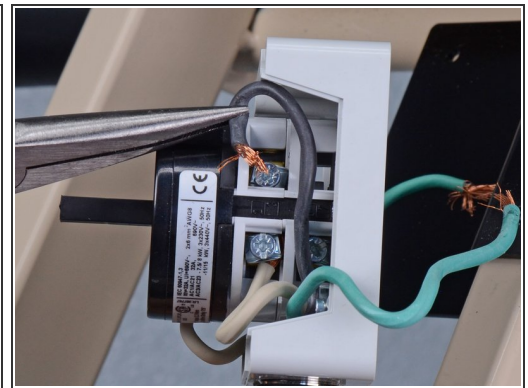
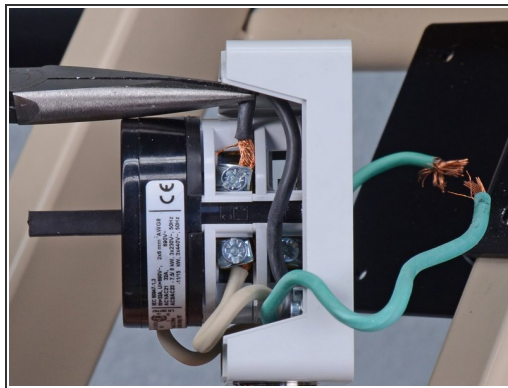
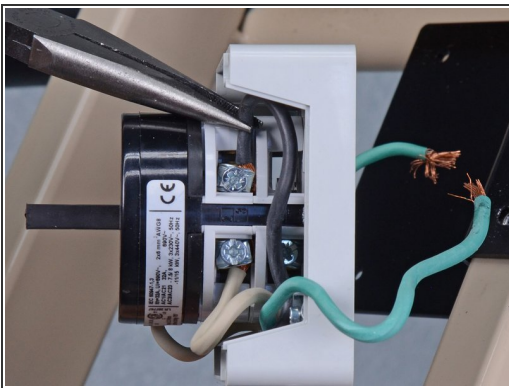
- Separate the green ground wires from each other and move them away from the switch housing.

Step 15 — Disconnect the power cord from the switch



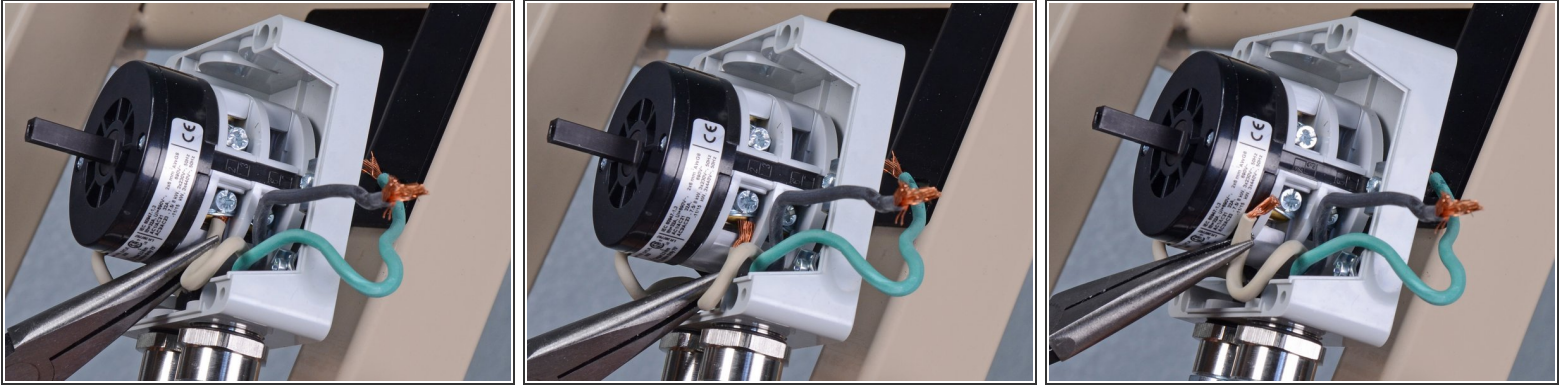
- Use a flathead screwdriver to loosen the two screws on the right side of the switch assembly securing the black and white wires from the power cord.
- ★ During reassembly, ensure each wire is installed in its correct location on the switch.

Step 16



- Remove the black wire from the switch.

Step 17



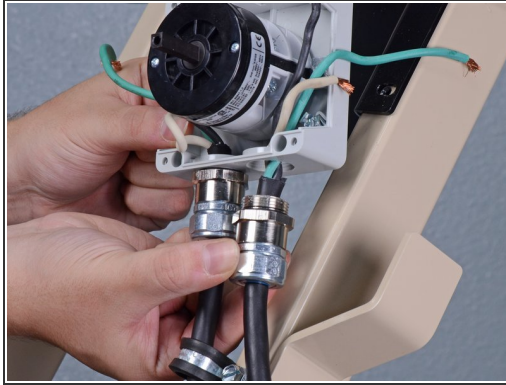
- Remove the white wire from the switch.

Step 18



- Use a 1-1/16 inch wrench or an adjustable wrench to loosen the power cord's strain relief fitting from the switch housing.
- Once the fitting is loose enough to turn by hand, twist the power cord and fitting counterclockwise until it is fully unthreaded from the switch housing.

Step 19 — Remove the power cord



- Remove the power cord from the on/off switch.

To reassemble your device, follow these instructions in reverse order.