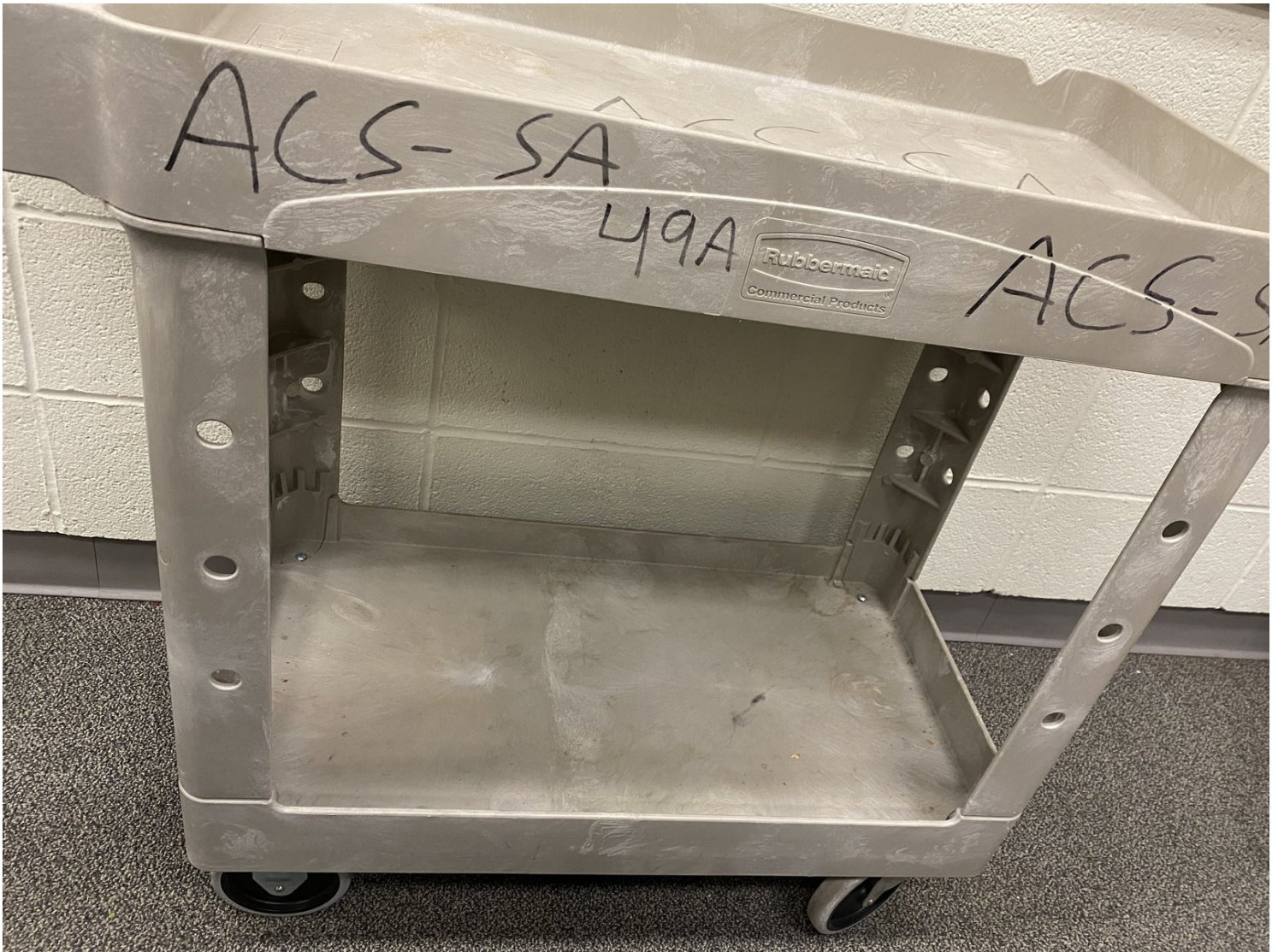




# Tool Cart Wheel Replacement

If you would like to replace the wheel on a...

Written By: Erika Soto



## INTRODUCTION

If you would like to replace the wheel on a utility cart, or even rearrange the wheels, use this step by step guide to do so. This guide can be useful if a wheel on your utility cart breaks or if you simply want to replace your wheels.

### 🔧 TOOLS:

Phillips #2 Screwdriver (1)

### ⚙️ PARTS:

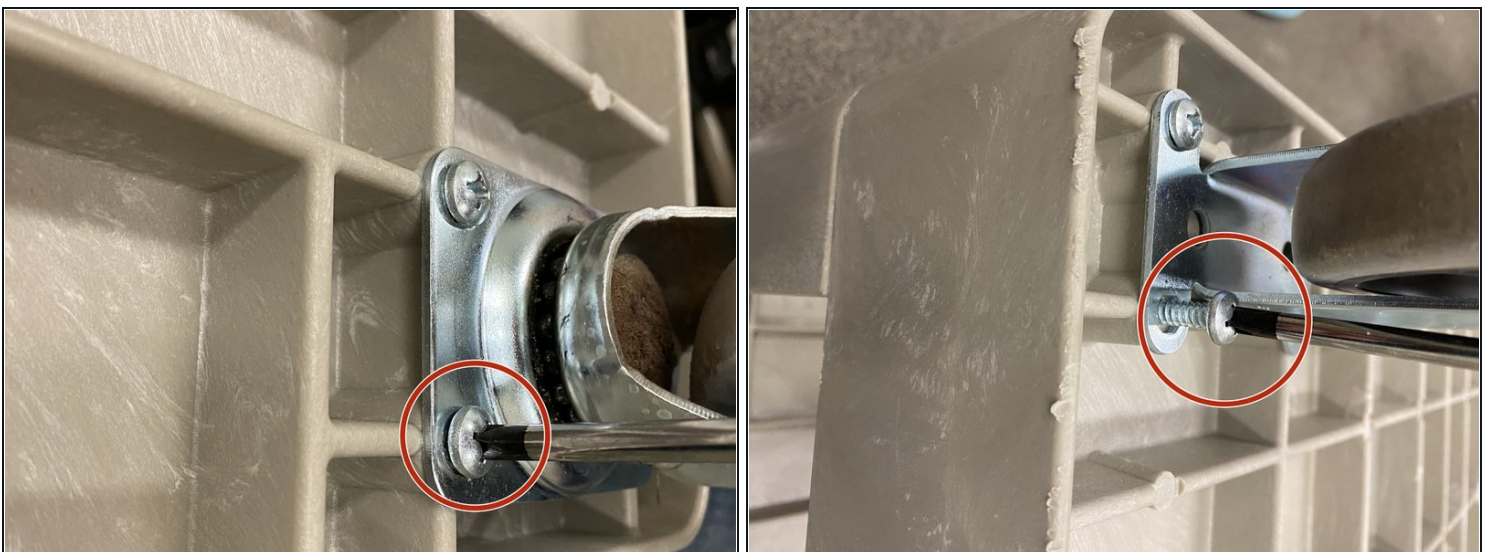
Standard rubber caster-swivel, 4 X 1 1/4"  
(1)

## Step 1 — Wheel



- Flip the cart over so that the wheels are facing up.

## Step 2



- Use the Phillips #2 screwdriver to remove all the screws from the metal plate.

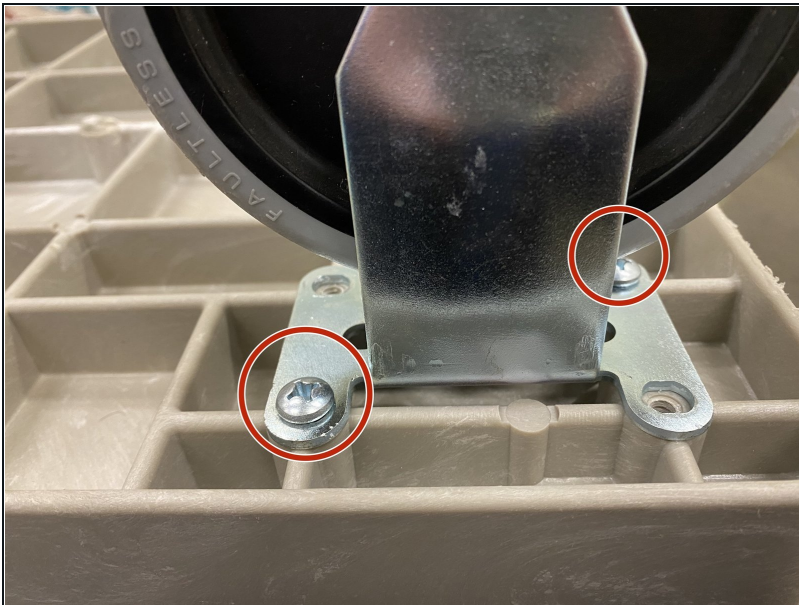


### Step 3



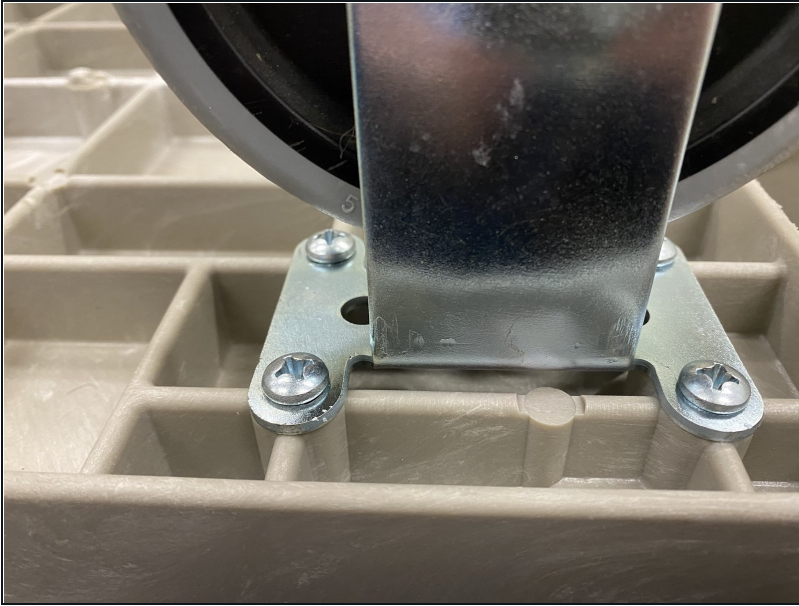
- Remove the old wheel.
- Place the new wheel with the metal plate directly on top of the cart so that the holes on the metal plate are aligned with the holes on the cart.

### Step 4



- With the Phillips #2 screwdriver, secure the screws back in diagonally.

## Step 5



- Insert and secure the other two screws.