



How to Upgrade the Expandable Storage in a PlayStation 5

Follow this guide to add expandable SSD storage...

Written By: Robert Boyd



INTRODUCTION

Follow this guide to add expandable SSD storage to your PlayStation 5.

Before starting this guide, make sure that your M. 2 blade SSD is compatible with [Sony's specifications](#). The SSD blade seen in the photos is not suitable for the expandable storage slot in the PlayStation 5.

Also, make sure that you have updated your PlayStation has been updated with the latest system software.

Before you begin, completely **power down and unplug all cables** from your console. Remember to follow general electrostatic discharge (ESD) safety procedures while repairing the console.



TOOLS:

[Flathead 3/32" or 2.5 mm Screwdriver](#) (1)
[Phillips #0 Screwdriver](#) (1)
[Tweezers](#) (1)



PARTS:

[PlayStation 5 Storage Upgrade Kit](#) (1)

Step 1 — Remove the stand screw



- If your PlayStation 5 is in its vertical orientation, flip it upside down so the stand is facing up.
- ⓘ If your PlayStation 5 is in its horizontal orientation, skip to Step 6.
- ⚠ **Work on a flat surface to prevent your PlayStation from falling over.**
- Use a coin or a flathead screwdriver to remove the 26.5 mm-long stand screw.

Step 2 — Remove the vertical stand



- Lift straight up to remove the stand.

Step 3 — Store the stand screw



- Insert the screw into the cubby on the bottom of the stand.

Step 4 — Cap the screw hole



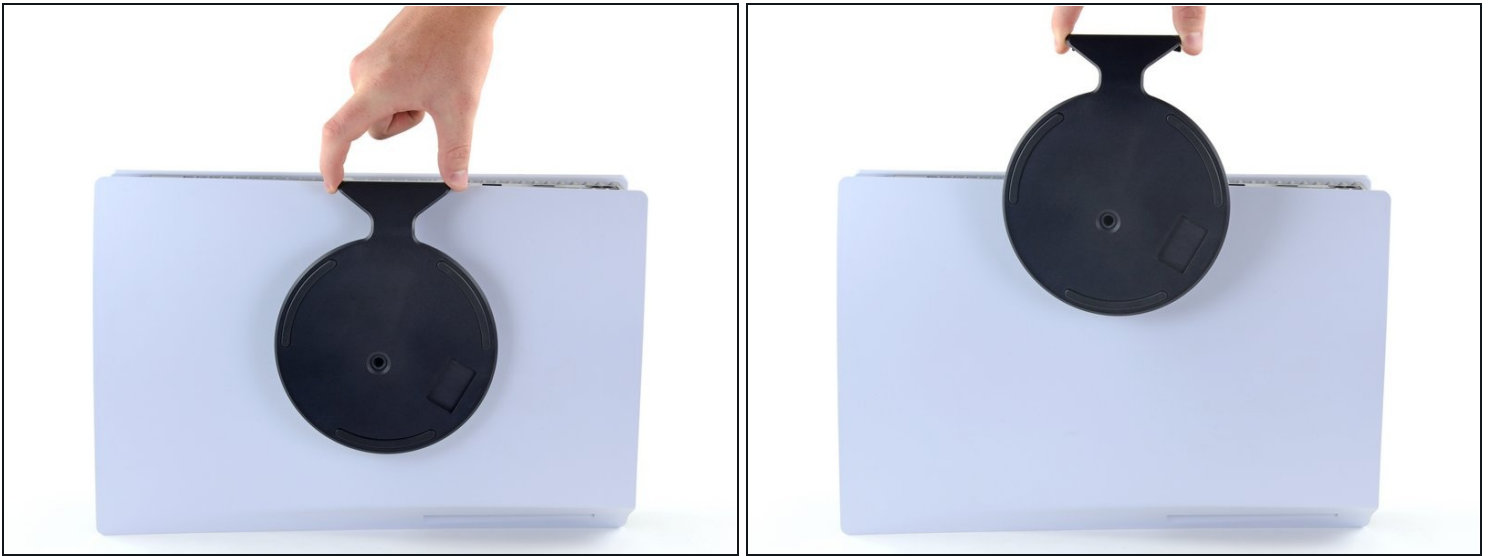
- Use a pair of [tweezers](#) or your fingernail to remove the cap from the cubby.
- Use your finger to press the cap into the screw hole.

Step 5 — Close the cubby



- Twist the stand counterclockwise to close the cubby.

Step 6 — Remove the horizontal stand



- If your PlayStation 5 is in its horizontal orientation, rest it on its face with the charging port facing up.
- Lift the stand straight up to remove it.

Step 7 — Remove the right faceplate



- Flip the device over so that the USB and ethernet ports are on the left side from your perspective.
- Lift up the corner of the faceplate to unclip it from the case.

Step 8



- While lifting up the corner, slide the faceplate towards the bottom of the device.
- Remove the right faceplate.

Step 9 — Remove the SSD cover screw



- Use a Phillips screwdriver to remove the 17 mm-long SSD cover screw.

Step 10 — Remove the SSD cover



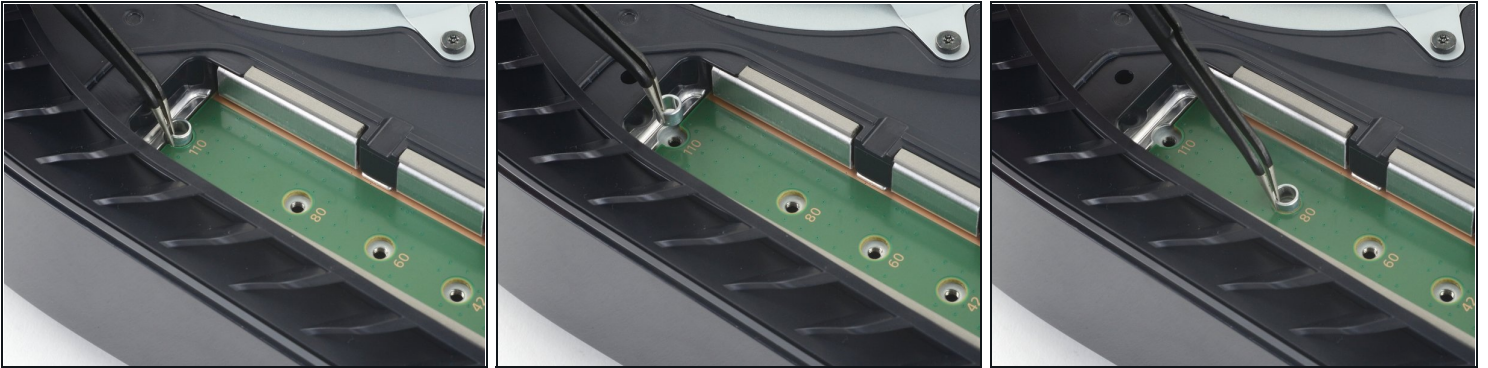
- Use your finger to slide the SSD cover towards the top of the device to unclip it from the case.
- Remove the SSD cover.

Step 11 — Remove the SSD screw



- Use a Phillips screwdriver to remove the 11 mm-long SSD screw.

Step 12 — Move the spacer



- Use a pair of [tweezers](#) to lift and move the spacer to the appropriate slot for your chosen M.2 SSD.

⚠ Do not attempt to install the SSD without the spacer in the proper location.

Step 13 — Insert the SSD



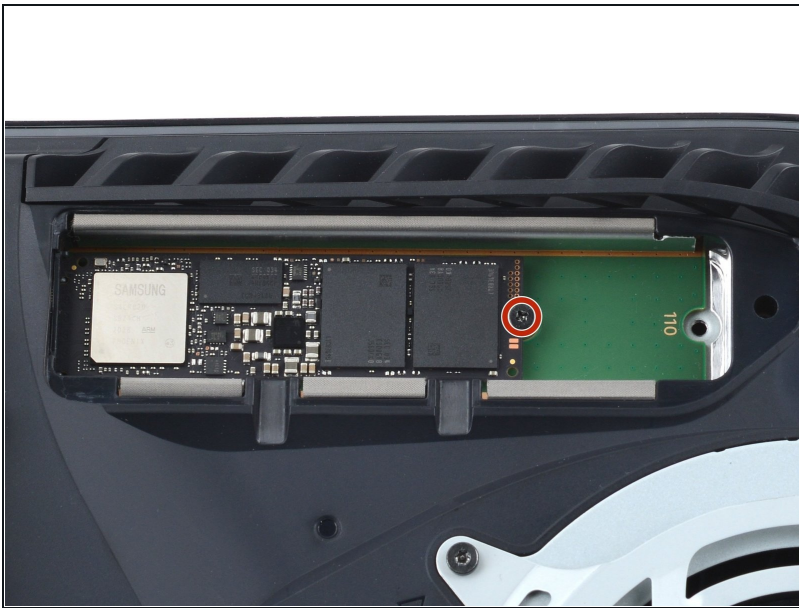
- If your SSD will benefit from a heat sink, [follow this guide](#) to install one.
- Insert your SSD at a shallow angle into the M.2 socket.
 - ⓘ Both the SSD and M.2 socket are keyed, which means the SSD only fits one way into the socket.
 - ⓘ It is normal for the SSD to rest at an angle once it has been inserted into the M.2 socket.

Step 14 — Secure the SSD to the motherboard



- Use your finger to press the SSD down until the end sits atop the spacer.
- With the SSD on the spacer, insert the SSD screw through the spacer and screw it into place, securing the end of the SSD.

Step 15



- Use a Phillips screwdriver to tighten the 11 mm-long screw to the end of the SSD.
⚠ Do not overtighten this screw. Doing so may damage the SSD.

To reassemble your device, follow these instructions in reverse order.

Take your e-waste to an [R2 or e-Stewards certified recycler](#).

Repair didn't go as planned? Try some [basic troubleshooting](#), or ask our [PlayStation 5 Answers community](#) for help.

