



How to Repair a Stuck Toilet Handle

This guide will show you how to un-stick the handle of your tank-mounted toilet.

Written By: Anna Pettit



INTRODUCTION

This guide will show you how to fix a stuck toilet handle. The handle of your toilet is responsible to start a chain reaction between parts of the toilet in order for it to flush. It is possible and common for one of these parts to malfunction, thus causing your toilet handle to feel stuck or unable to flush entirely. In most cases it is relatively simple to repair the stuck handle of a toilet by yourself, no plumbing experience necessary. This guide will show you how to un-stick your tank-mounted toilet's handle in three different spots.



TOOLS:

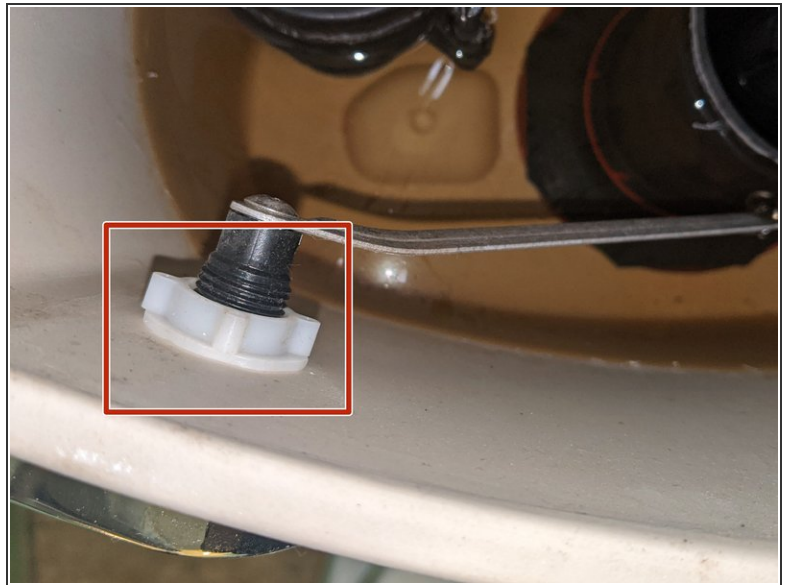
- [Adjustable Wrench](#) (1)

Step 1 — How to Repair a Stuck Toilet Handle



- Find the shut off valve behind the toilet.
- To close the shut off valve, most toilet valves need to be turned to the left.

Step 2



- Remove the lid from the tank of your toilet.
- Find the nut inside of the tank that holds your toilet's lever.

Step 3



- Using your hand or an appropriately sized wrench, loosen the nut a little.
- If your toilet handle is still sticking, move to the next step.

Step 4



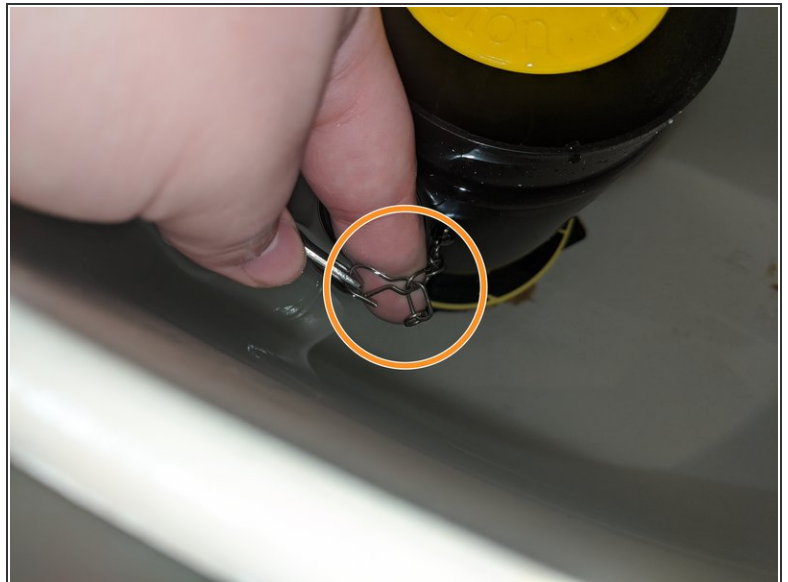
- Push the handle down slowly and watch the lever arm to make sure it is not touching anything.
- ⓘ The lever arm of your toilet handle cannot touch anything or else it might cause the handle to stick.

Step 5



- If your toilet's lever arm is touching something, bend the metal so that this does not happen.

Step 6



- If your toilet's lever arm is catching on the chain which connects it to the flapper at the bottom of the tank, then this will need to be remedied.
- The length of the toilet chain can be adjusted by moving the hook a few links down and reattaching it to the lever.

To reassemble your toilet, turn the water valve back on and put the lid back on.