



How to Replace a Three-Prong Plug on a Power Strip

With this guide you will learn how to restore a...

Written By: Arahey Garay



INTRODUCTION

With this guide you will learn how to restore a power strip by replacing its plug. For this guide we'll be specifically using 'Construction Material Group's Temporary Power Tap Model Number 6m15-6' power strip. This plug in particular is missing the grounding pin which is used to prevent electrocution. Besides that, the 'neutral' and 'hot' pins are bent. All of these factors could create a recipe for disaster. With this guide we plan to help you replace the original prong with a new one making your power plug safer to use.

Remember to disconnect the power strip from the electrical source before starting any restoration. Also, it is recommended to work in a non-metal surface.

TOOLS:

[Wire Stripper 16-26 AWG C.H.P. CSP-30-7](#) (1)

[Scissors](#) (1)

[Heat-Shrink Tubing](#) (1)

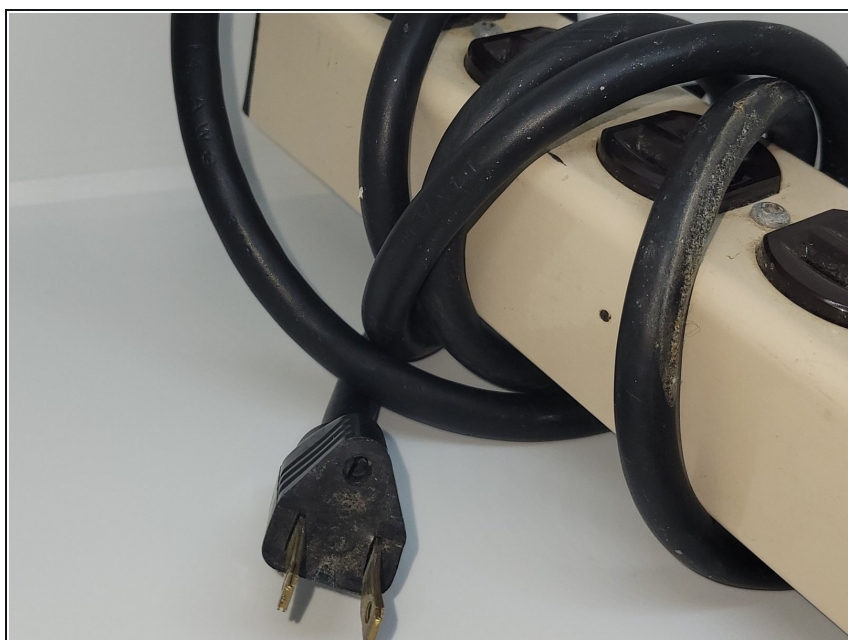
[Lighter](#) (1)

[Phillips #1 Screwdriver](#) (1)

PARTS:

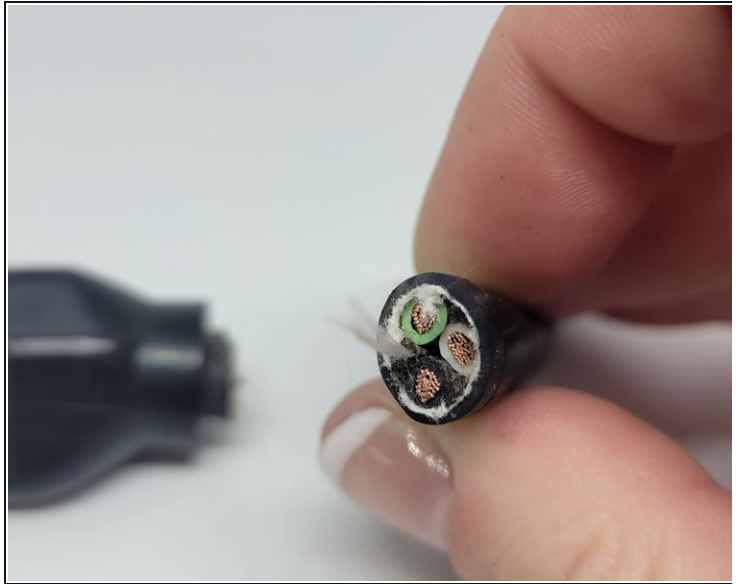
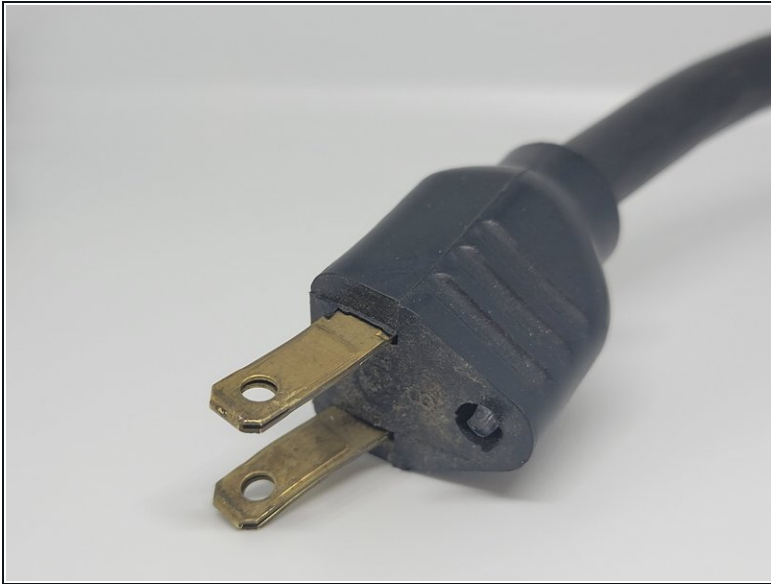
[NEMA 5-15 Grounded \(Type B\) Plug](#) (1)

Step 1 — Three-Pole Plug



- Unplug the power strip and place it on a flat, non-metal surface.

Step 2



- Cut near the base of the original plug, all the way through. Dispose of the old plug.

Step 3



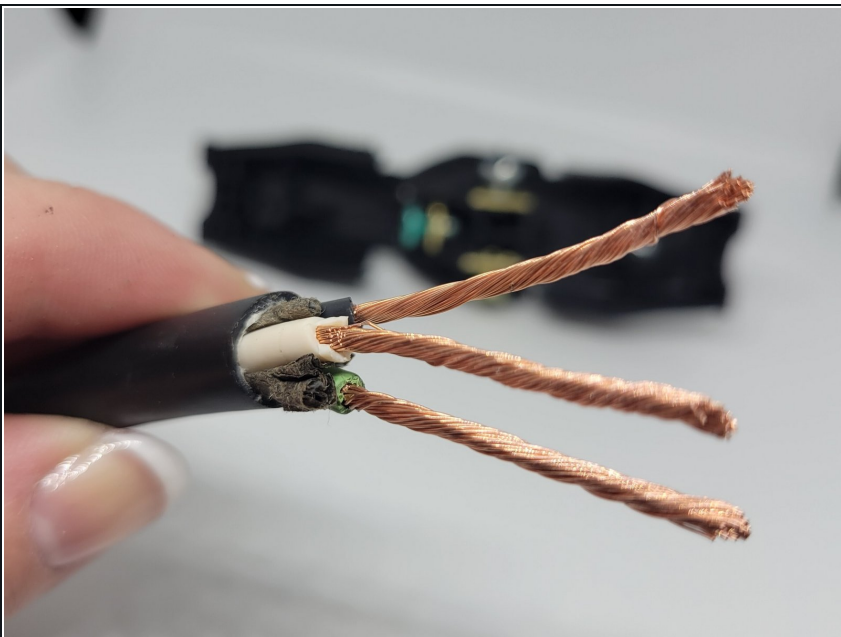
- Before attempting to work with the wires, insert the cord into a piece of heat shrink tubing. This will help to safely seal the wires later.

Step 4



- Examine the 3 wires inside. You should see green, white, and black. Snip off any stray wires over a trash can.

Step 5



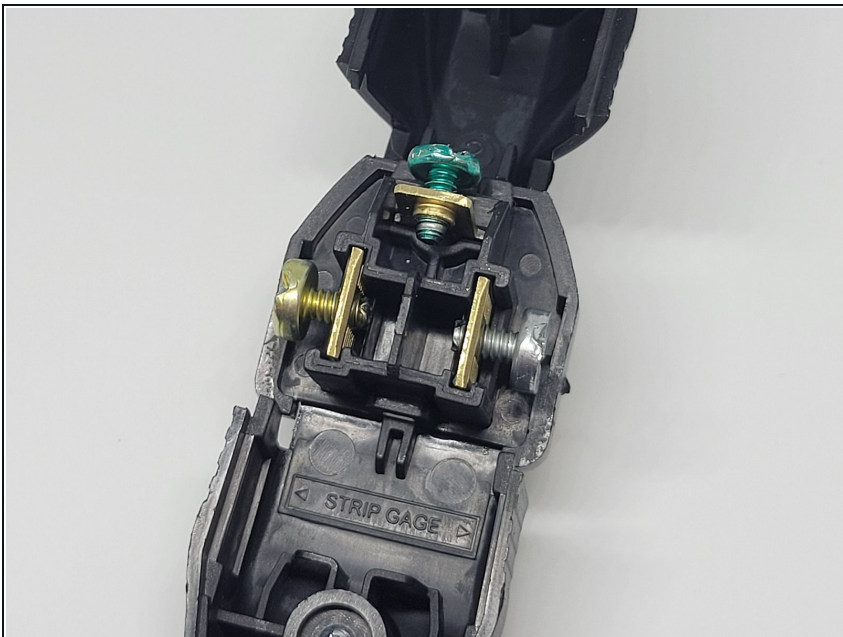
- Strip back about 1/2 inch of the Wire with the wire strippers.
- Braid the wires by gently twisting each strand so they stay with their same color wires.

Step 6



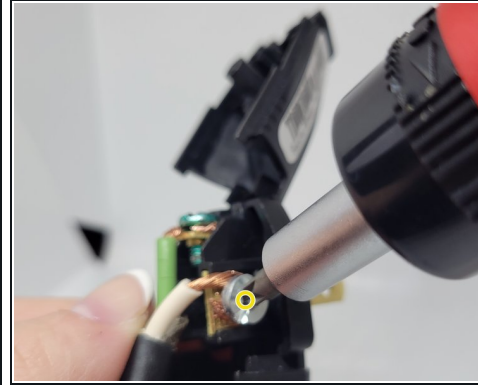
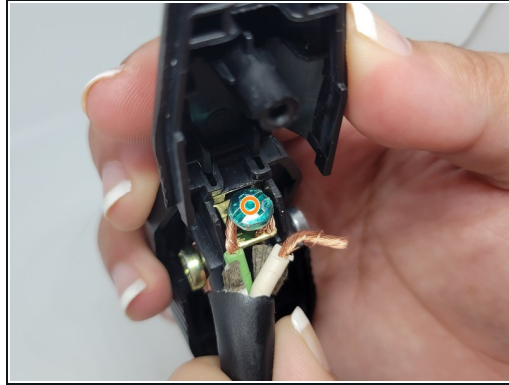
- Unscrew the hinge on the new plug, set the screw somewhere safe for later.

Step 7



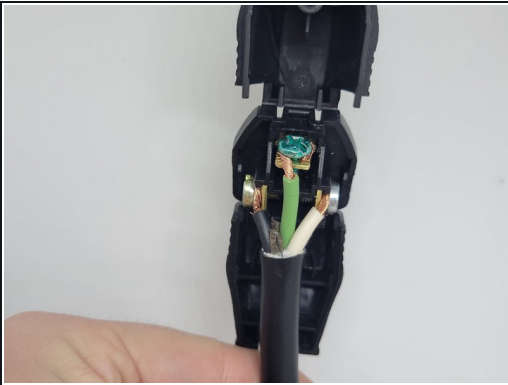
- ① Make sure you have 3 different colored screws. Gold or dark colored, green and silver or light colored.

Step 8



- Pair the black wire to the gold or dark colored screw. Once twisted around the screw clockwise, tighten it.
- Pair the green wire to the green colored screw. Once twisted around the screw clockwise tighten it.
- Pair the white wire to the silver or light colored screw. Once twisted around the screw clockwise, tighten it.

Step 9



- Close up the new plug and screw it tightly shut.
- ⓘ Make sure the plug closes well with the cables and it is not blocking the closing mechanism.

Step 10

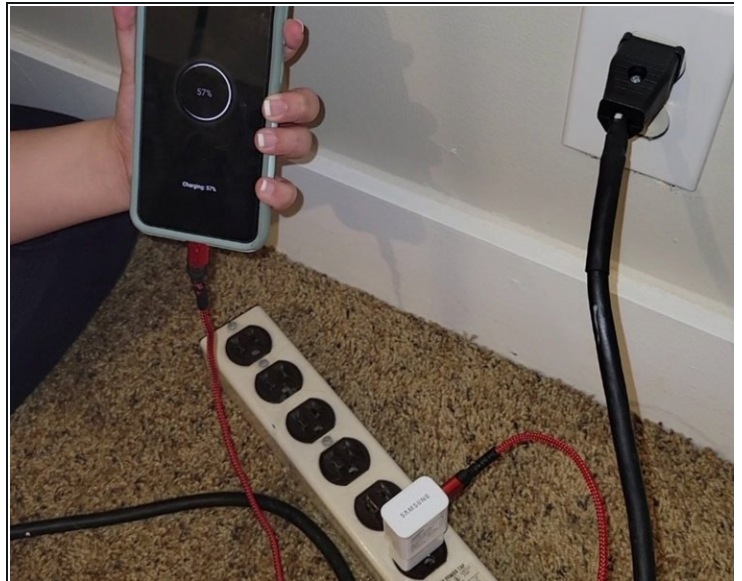


- Seal the Heat Shrink Tubing by holding the flame of a lighter directly on the tubing, moving it back and forth until the tubing molds itself to the wires.

⚠ Do not let the flame linger for too long, or you run the risk of ruining the seal.

ⓘ If heat shrink is unavailable, electrical tape works just as well.

Step 11



- Connect to the wall and enjoy your restored power strip.

Connect to the wall and enjoy your restored power strip.