



# Apple Watch SE Screen Replacement

How to replace a cracked or damaged Retina LTPO OLED screen (a.k.a. display assembly) on your Apple Watch SE.

Written By: Dominik Schnabelrauch



# INTRODUCTION

Use this guide to replace a broken, cracked, or defective display on your Apple Watch SE.

Replacing the display can cause issues with **Apple Pay**. If possible, to reduce the likelihood of problems, delete all your Apple Pay account info before the replacement, and then re-enter it with the new display installed.

You'll need **replacement adhesive** to reattach components when reassembling the device.



## TOOLS:

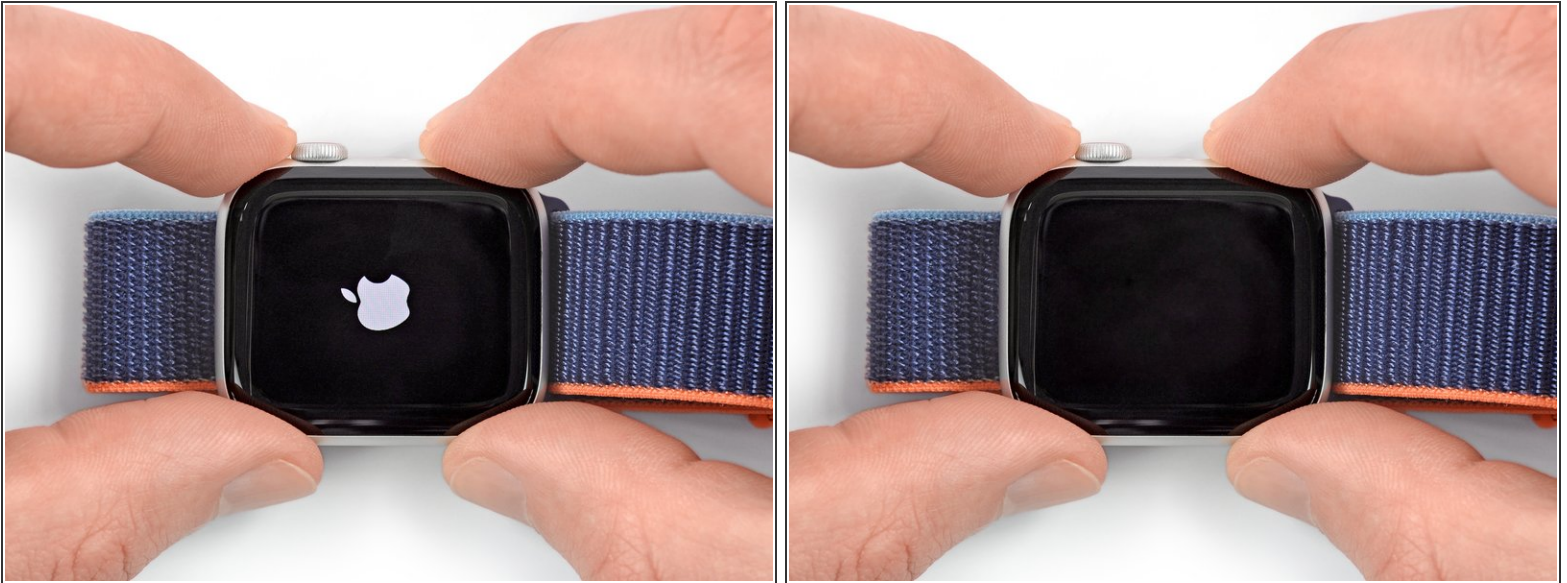
- [iOpener](#) (1)
- [iFixit Opening Picks \(Set of 6\)](#) (1)
- [Curved Razor Blade](#) (1)
- [Safety Glasses](#) (1)
- [ESD Gloves](#) (1)
- [Tweezers](#) (1)
- [Spudger](#) (1)
- [Tri-point Y000 Screwdriver](#) (1)
- [Q-Tips](#) (1)



## PARTS:

- [Apple Watch \(40 mm SE\) Screen](#) (1)
- [Apple Watch \(44 mm SE\) Screen](#) (1)
- [Precut Adhesive Card](#) (1)
- [iFixit Adhesive Remover \(for Battery, Screen, and Glass Adhesive\)](#) (1)

## Step 1 — Power down your watch



- Before starting repairs, take your watch off the charger and power it down.
- If your touchscreen is broken and you can't power off the watch, [use this alternate method to power it down](#).

## Step 2 — Safety requirements



- Because the gap between the screen and watch body is so thin, a sharp blade is needed to separate the two. **Read the following warnings carefully before proceeding.**
  - ⚠ **Protect your fingers** by keeping them completely clear of the knife. If in doubt, protect your free hand with a heavy glove, such as a leather shop glove or gardening glove.
  - ⚠ Be careful **not to apply too much pressure**, as this might cause the knife to slip and cut you, or damage the watch.
  - ⚠ **Wear eye protection**. The knife or glass may break, sending pieces flying.
- ⓘ Attach or remove the watch band as needed to provide more control as you make repairs.

### Step 3 — Soften the display adhesive



- [Prepare an iOpener](#) (or use a hair dryer or heat gun) and heat the face of the watch to loosen the display adhesive.
  - Leave the iOpener on the watch for at least two minutes to fully heat the screen and soften the adhesive holding it to the case.
- i** You may need to reheat the iOpener and repeat this procedure several times until the display adhesive softens.

### Step 4 — Display opening



- Place the edge of a curved blade into the thin gap between the display and the outer case. Start at the short side of the display, closest to the digital crown.
- Press firmly *straight down* into the gap.
- Once inserted, tilt the blade to pry the display open slightly.

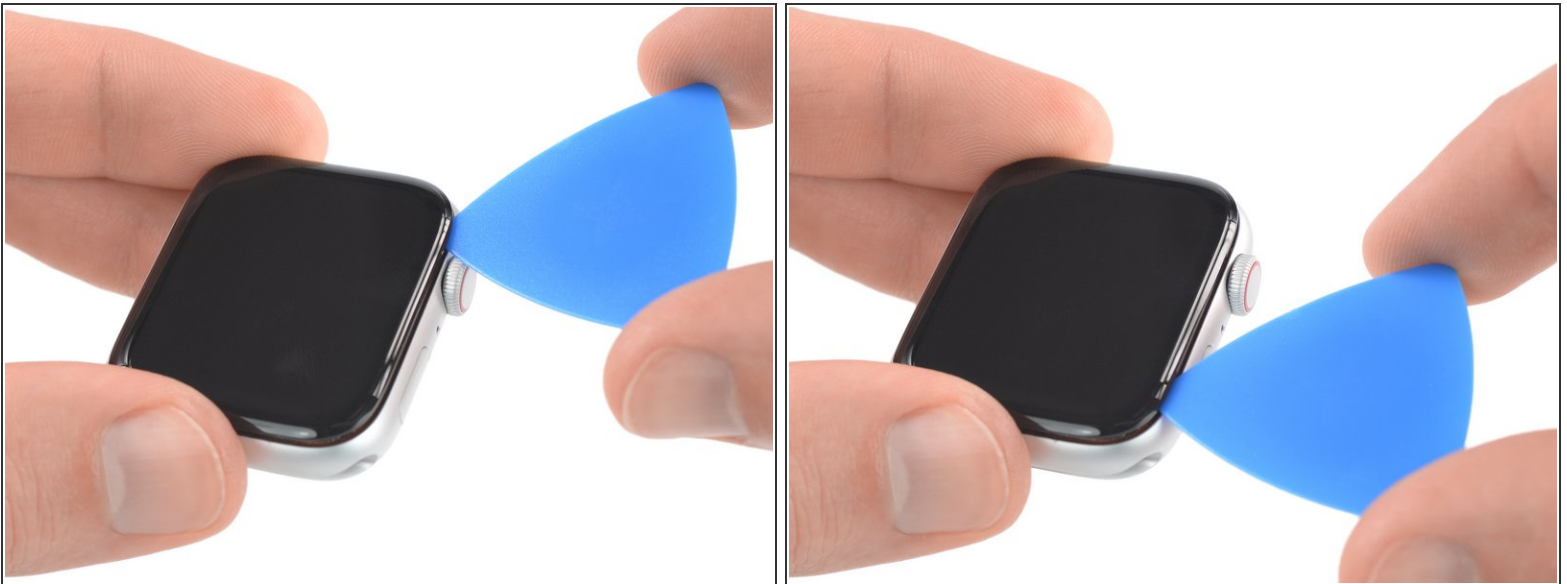


## Step 5



- Insert an opening pick in the gap you've created.
- Slide the opening pick along the short edge of the watch to cut the adhesive.

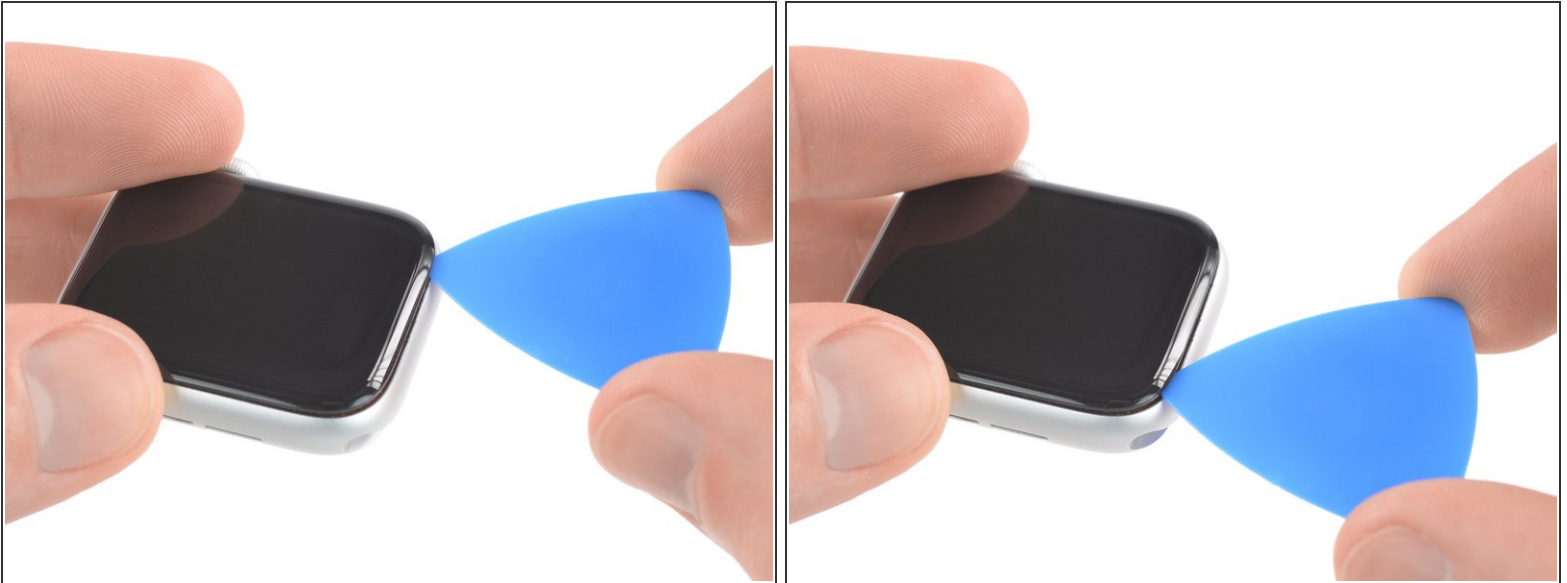
## Step 6



**⚠ When slicing near the crown, don't insert the opening pick deeper than 1/16th of an inch (~2 mm).**

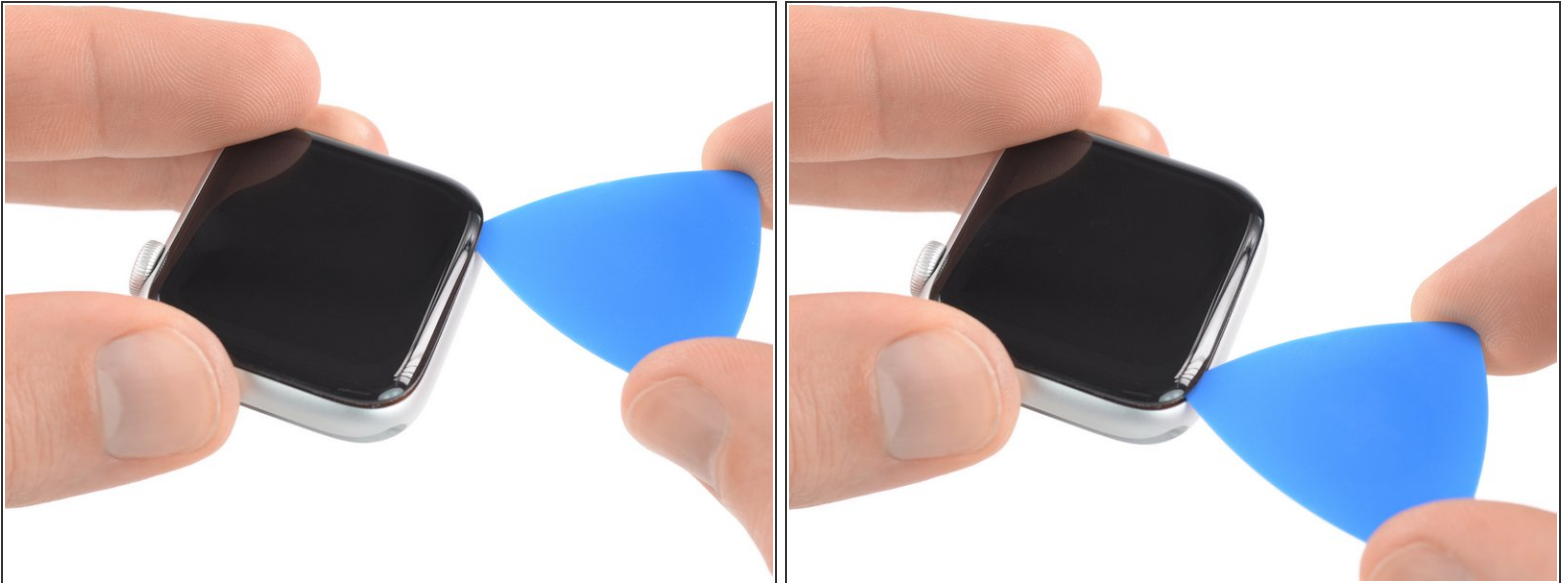
- Slide the opening pick around the corner and along the long edge where the crown is located to cut the display adhesive.


## Step 7



- Slide the opening pick around the corner to cut the remaining adhesive on the short edge farthest away from the crown.

## Step 8



- Place the watch on a flat surface and use an opening pick to slice through any remaining adhesive.  
 When slicing near the crown, don't insert the opening pick deeper than 1/16th of an inch (~2 mm).
- Slide an opening pick under the opposite display edge of the watch crown.



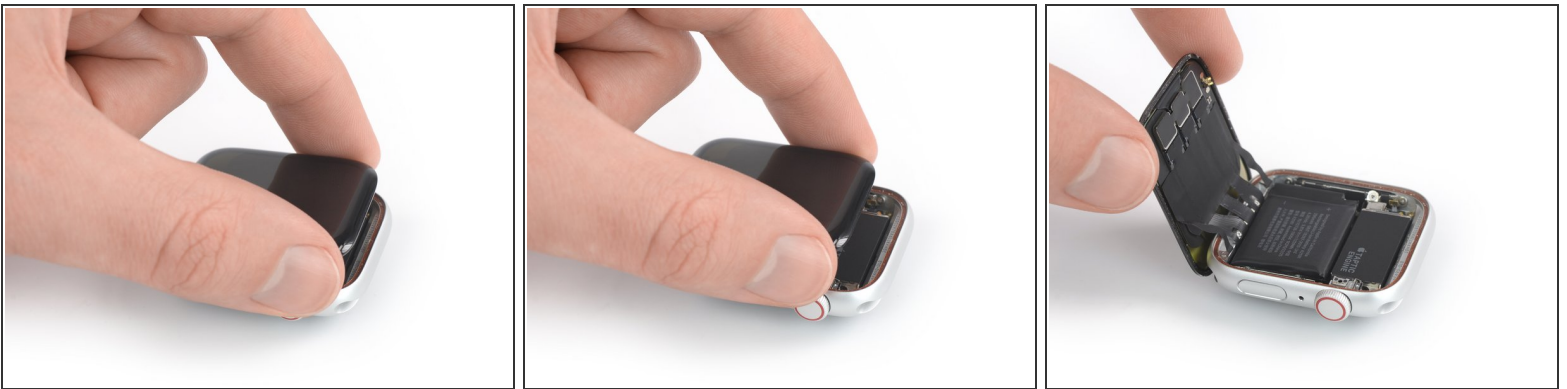
## Step 9



- Reinsert the opening pick on the short edge of the watch, next to the watch crown.
- Twist the opening pick to loosen the display off the watch case.

 **Don't try to remove the display. It is still connected to the watch assembly.**

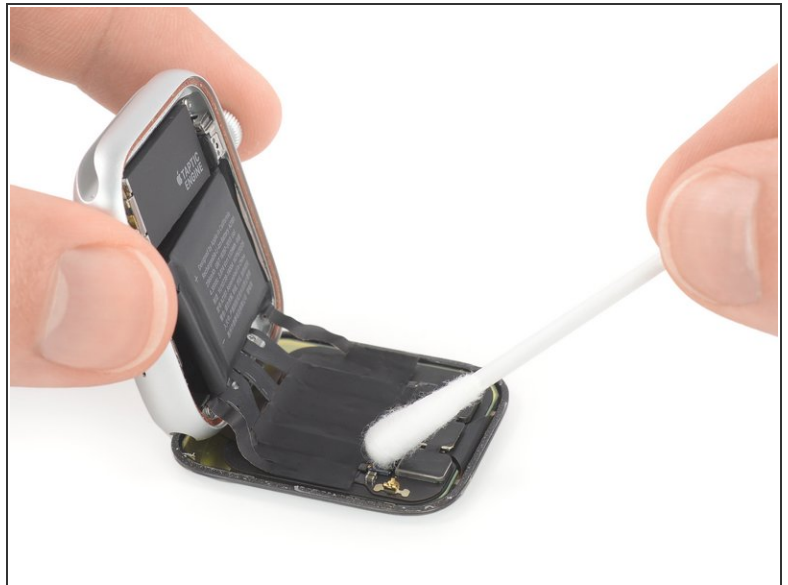
## Step 10



 **Be careful not to strain the display cables when you fold the display to the side.**

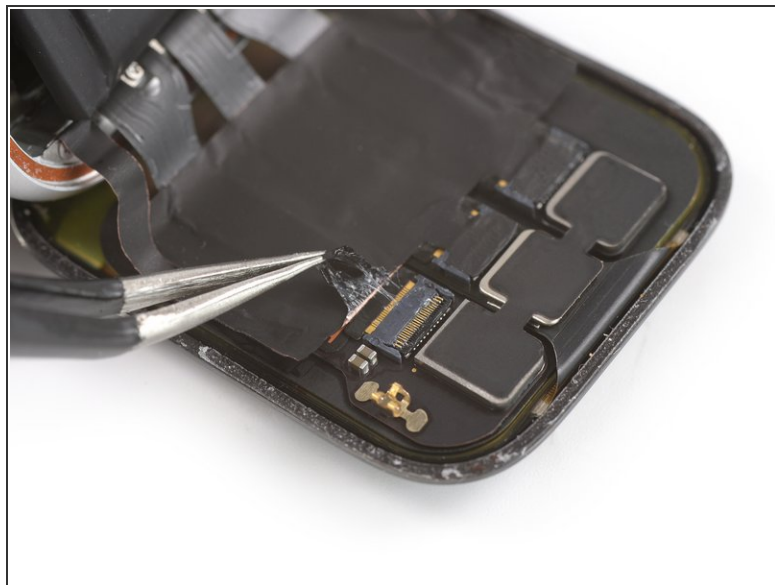
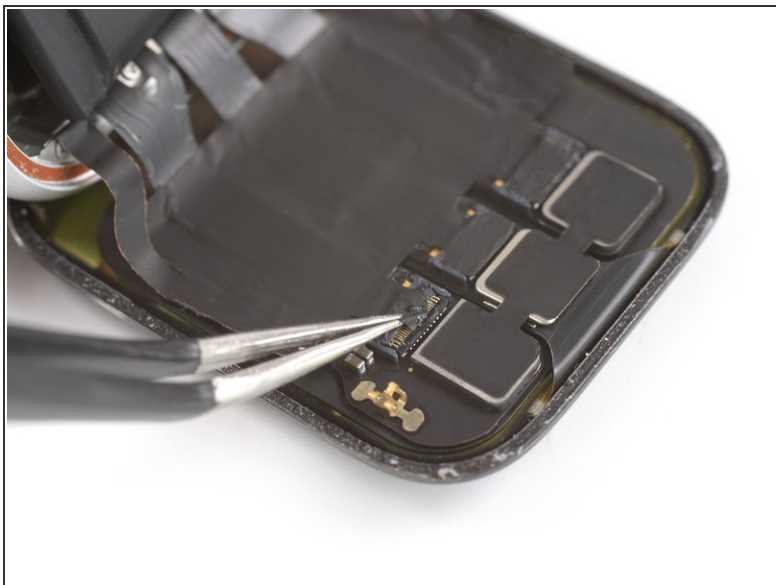
- Lift the display and carefully pull it in direction of the short edge farthest away from the crown.
- Swing the display open to an upward position.

## Step 11 — Loosen the adhesive



- i** The black foil which covers the display connectors is very fragile and likely to rip. To keep the tape intact while peeling it off, it's necessary to use high isopropyl alcohol or an iOpener.
- [Prepare an iOpener](#) (or use a hair dryer or heat gun) and heat the face of the watch to loosen the adhesive tape.
- i** You may need to reheat the iOpener and repeat this procedure several times until adhesive softens.
- Alternatively, apply a little bit of high-concentration isopropyl alcohol (>90%) to a Q-tip and apply it to the black adhesive foil on top of the display connectors. Let it penetrate the adhesive for about two minutes.

## Step 12 — Peel off the foil



- Use a pair of tweezers to carefully peel off the tape covering the right display cable connector.

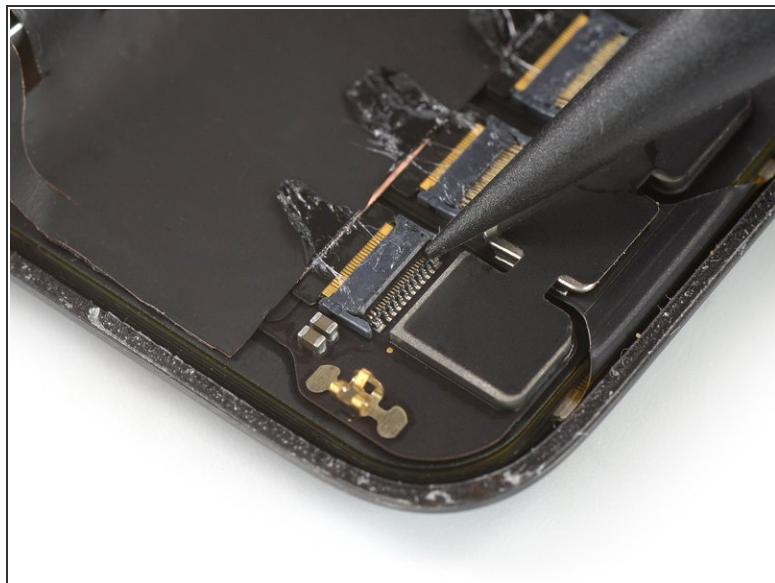
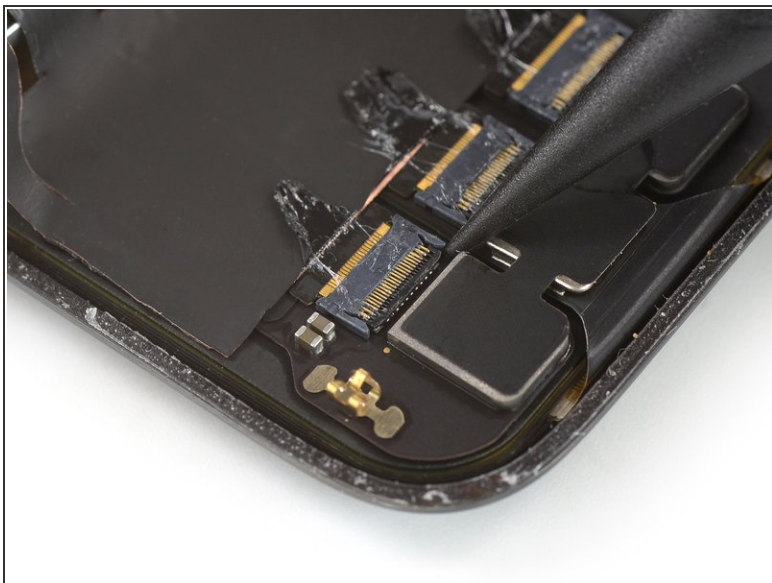
## Step 13



- Use a pair of tweezers to carefully peel off the tape covering the middle and left display cable connector.

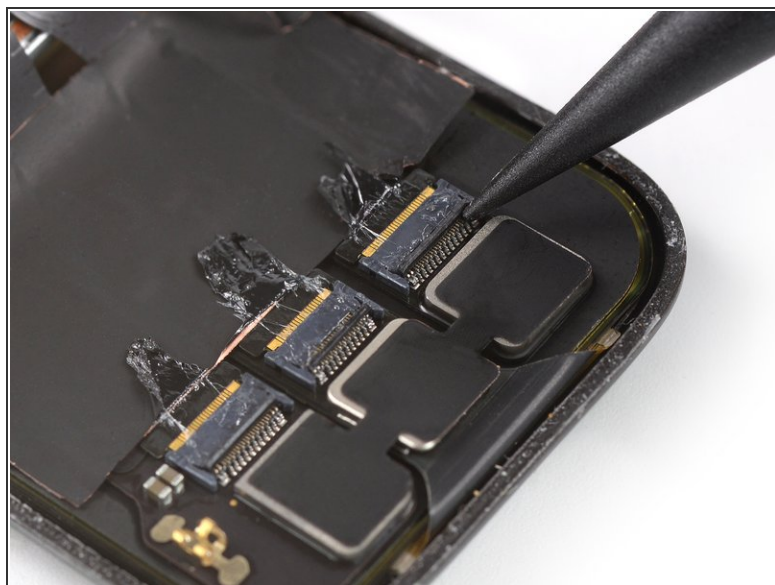
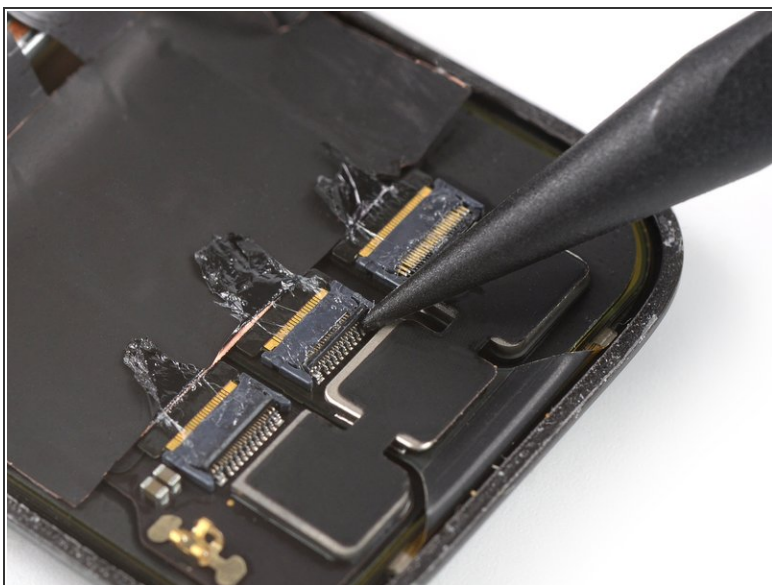


## Step 14 — Open the ZIF connectors



- Use the pointed end of a spudger to open the right ZIF connector on the rear side of the display by bringing its flap in an upright position.

## Step 15



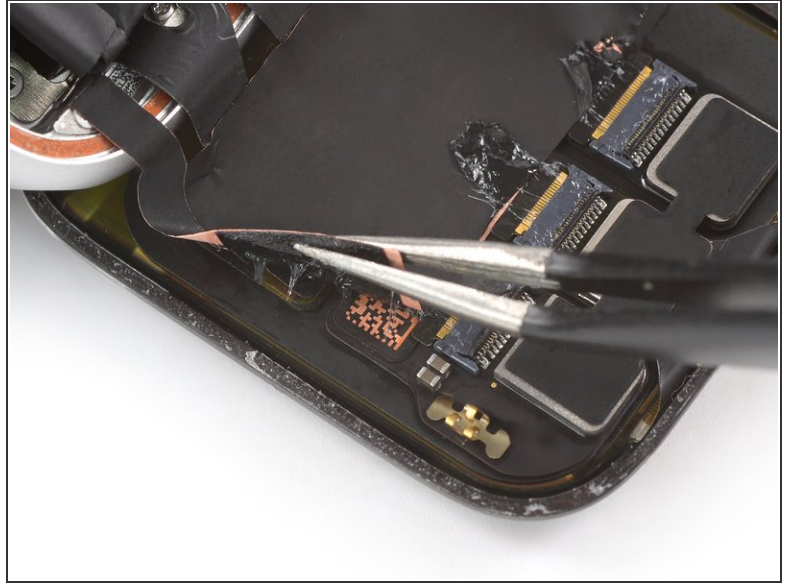
- Use the pointed end of a spudger to open the middle and left ZIF connectors by bringing their flaps to an upright position.

## Step 16 — Peel off the display cable sticker



- Use a pair of tweezers to peel the left edge off the display cable sticker off the rear side of the display.
- ⚠ Do not try to remove the sticker all the way, you will reuse it when reassembling your watch. Only peel the area off which adheres the cable to the rear side of the display.**

## Step 17



- Use a pair of tweezers to peel the right edge off the display cable sticker off the rear side of the display.

## Step 18 — Pull the cable out of the ZIF connector



- Carefully pull the display flex cables out of their ZIF connectors.  
**⚠️ Only pull close to the ZIF connector and not on the watch body. Otherwise the display cable might rip.**



## Step 19 — Remove the display



- Separate the watch assembly and the display.

To reassemble your Apple Watch SE follow these instructions in reverse order to reattach the screen and the battery.

Apply a little bit of high isopropyl alcohol (>90%) to a Q-tip or use a cleaning pad to gently remove the leftover adhesive on the edges of the watch case and the screen before installing new adhesive.

Take your e-waste to an [R2 or e-Stewards certified recycler](#).

Repair didn't go as planned? Check out our [Answers community](#) for troubleshooting help.